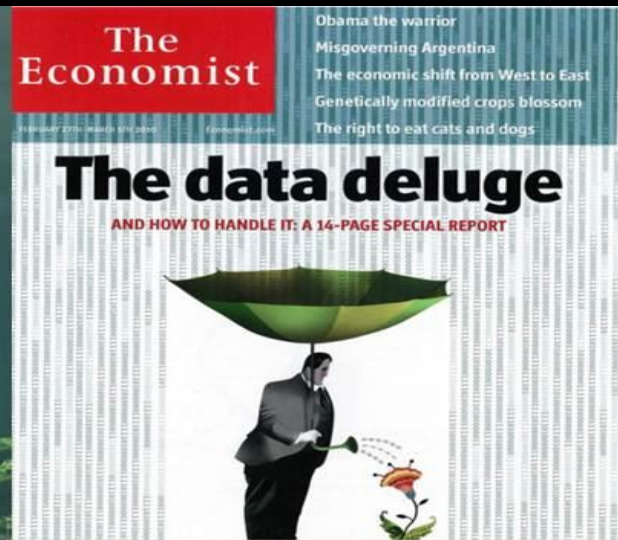
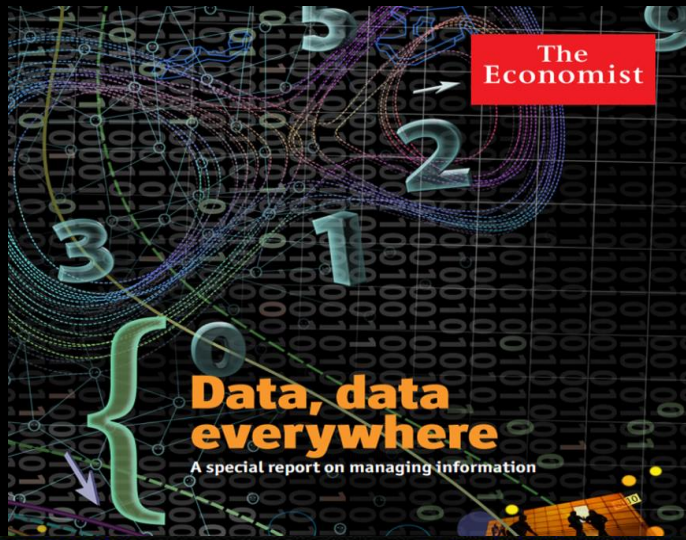


In the news



On the streets





Progress Update

**Recommendation #3 of
ITSM Top 5 Service Recommendations**
from February 2013

Enterprise Data & Analytics

Recommendation #3 summary

Expand the Enterprise Data Warehouse (EDW) by creating **additional reports**; including **additional data elements**; and providing a **credible, consistent, and reliable data environment** to allow users **flexible methods to access information**, with an **emphasis on “self-service” and ad-hoc analytics**.



Agenda

Progress on expanding the Enterprise Data Warehouse via

- self-service and ease of use
- more reports and ad-hoc analytics
- data consolidation and mash-ups
- more data faster
- credible, consistent, and reliable data environment
- services, roadmap and what's next





“self-service
& ease of use”

Innovation

Helping users make better decision faster



Business Intelligence Portal

The screenshot displays the B.I. Portal interface for the University of Washington. The header includes the UW logo, the text "UNIVERSITY of WASHINGTON", and "B.I. Portal Business Intelligence Portal for UW Enterprise Data Warehouse reports and analytics". Navigation links for "REPORTS", "CUBES", "GLOSSARY", and "HELP" are visible, along with a "B.I. Portal" dropdown menu. The main content area is a grid of report thumbnails, each with a title and a preview image. The reports are organized into four categories: "New to EDW?", "My Favorites", "Recommended Reports", and "Most Popular Reports". Other reports include "100 Percent Sponsor-Funded Faculty", "Class List by Curriculum Course Section", "DAC Secured Tables, Views And Columns Overview by Roles", "DAC-Secured Tables, Views And Columns", "Who Has Access?", "Paid FTE by Funding Source", "Variable Reporting Period Transaction Summary", "Remaining Balance by OrgCode and Category", "Journal Voucher Detail", "Custom Budget Index Report by OrgCode", "Current Online Check Register", "Journal Voucher Detail", "Class List by Curriculum Course Section", "FAS Batch Summary Report", "Grant and Contract Certification Report", "Satisfactory Progress Report - Current Status", "Gift Balance Detail by Budget List", and "2013 Base Year Paid FTE Report".

Intuitive

Flexible

Informative

Socialized

Customized

BI Portal: <http://biportal.uw.edu>

Online demo: <http://decisionsupport.washington.edu/BIPortalTour.html>



Innovation

Lowering the barrier to entry for self service analytics

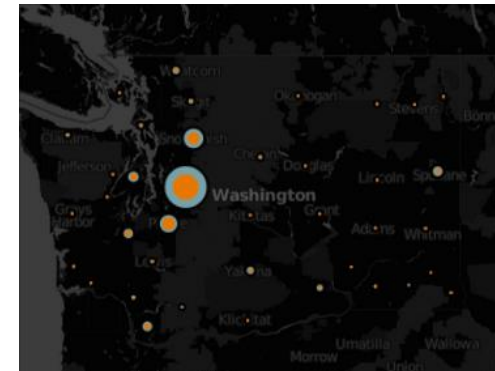
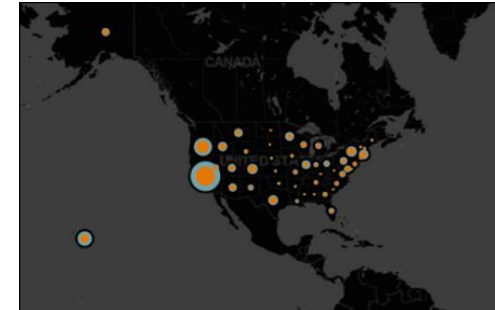
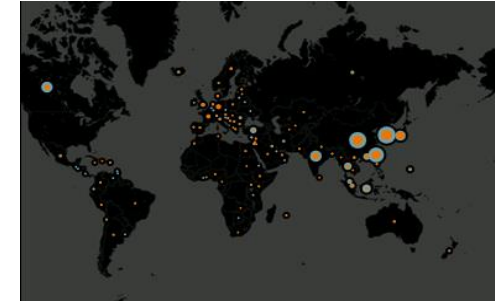
Tableau Data Visualization Implementation

- UW purchased 175 Tableau Desktop licenses
Nearly 150 people now using Tableau Desktop to develop visualizations
- Rolled out Tableau Server initially in support of UW Profiles
Campus-wide Tableau rollout from Nov 2013 through March 2014

Major Achievements

- Tableau Desktop training for all faculty and staff
- Tableau User Group
- Several outreach road show events
- Setting up Single-Sign-On using SAML 2.0
- Automating server management
- Number of publications on/off campus

Students by Geographic Origin



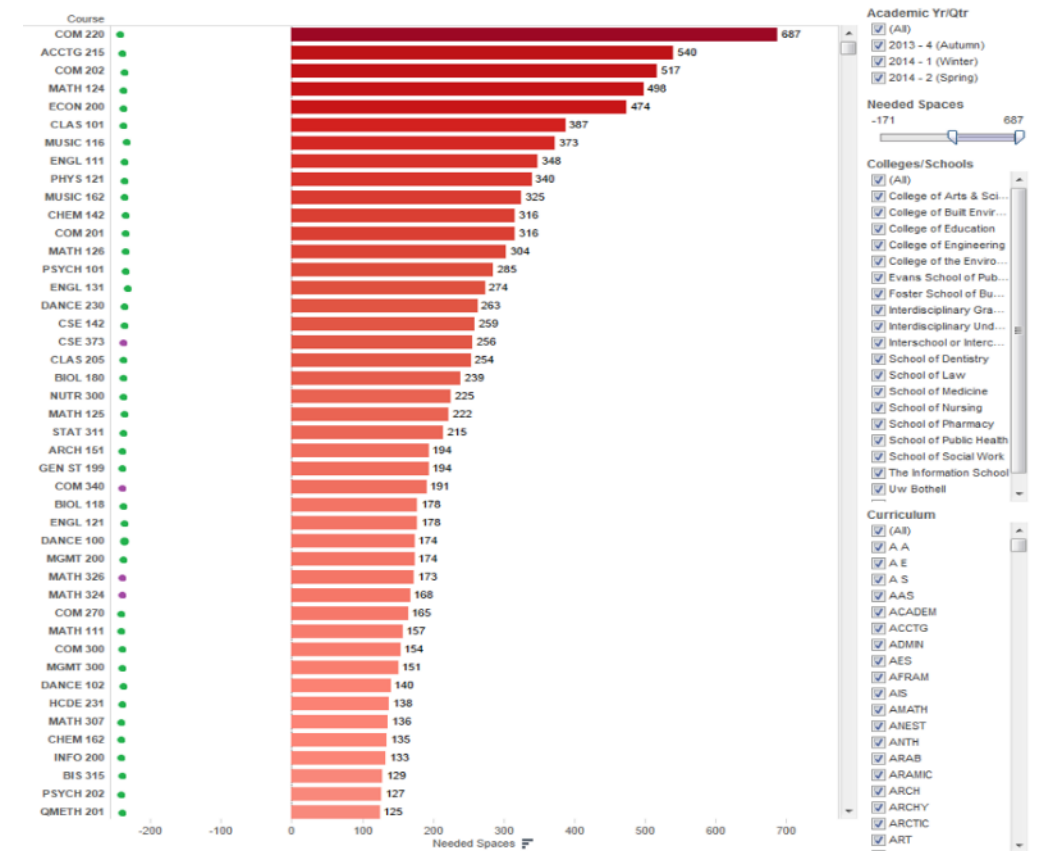
Innovation

New methods to gain insight from the data we collect

Data Science - Notify Analytics

- Course demand and “Needed Spaces” helps plan for courses
- Shown to Deans, Chairs, UW-IT Town Hall, and UW Regents
- Released in August 2014
- A great example of cross-team collaboration (ACA and EDA)
- Leap Forward Day innovation

Needed Spaces by Course





“more reports &
ad-hoc analytics”

Impact

The fruits of our efforts



By the numbers

Enterprise Data Warehouse

5 billion
records

36 thousand
columns

1.7 thousand
tables

36
databases

Enterprise Business Intelligence

280 SSRS reports
14 thousand runs/month

7 SSAS cubes
20 thousand runs/month

26 Tableau dashboards
800 runs/month

6,300 users
1.1 million direct queries/month



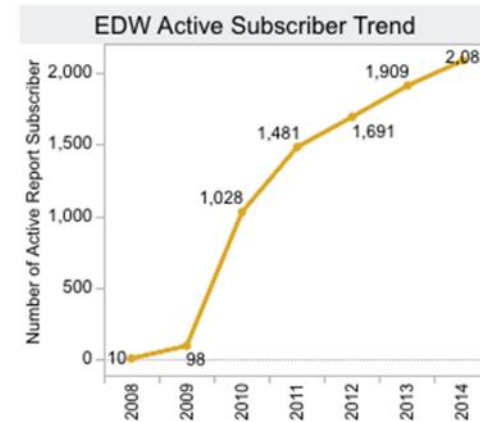
Impact

Growth in report utilization

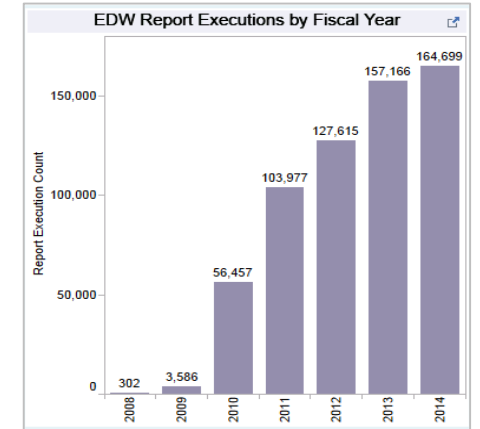
Reporting

- Steady usage growth continues
- Top Users
 - School of Medicine
 - Finance and Facilities
 - College of Arts & Sciences
 - College of Engineering
- Financial Reports most popular

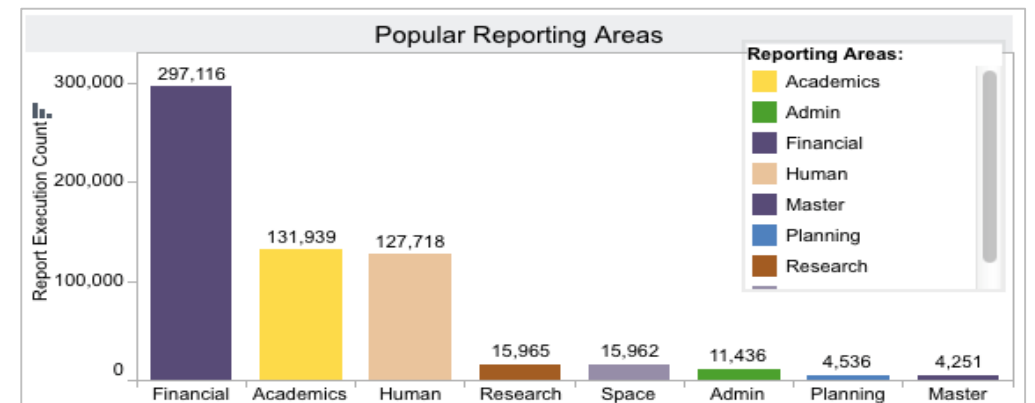
Report Users



Report Usage



Usage by Subject Area



Impact

Explorative analytics and power tools

Release of Financial Cube 2013

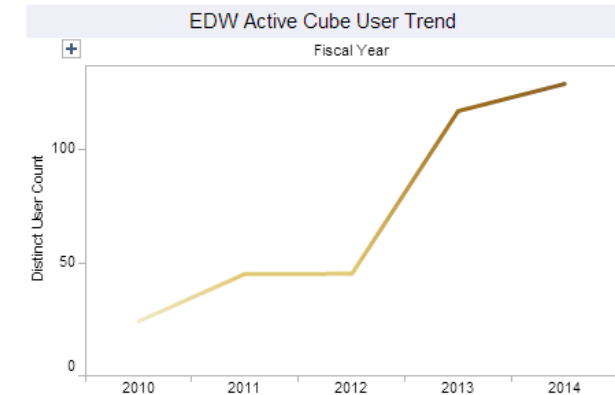
with Account Groupings and State Codes

- Higher usage as compared to previous year/same quarter:
~250% more traffic from F2
- Positioned us well for state audit

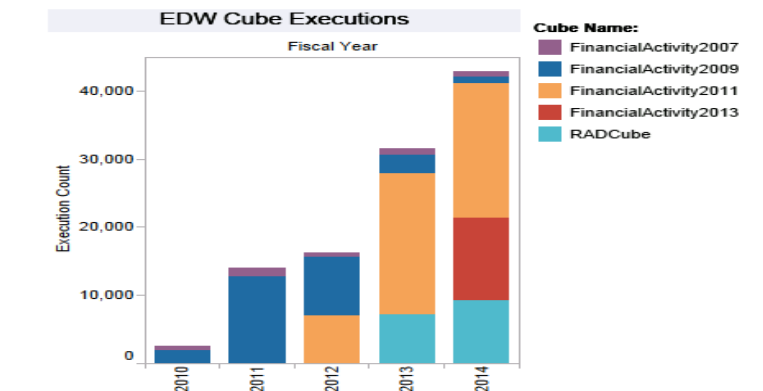
Research Awards Cube

- Usage up by 22% in 2014, but it is on the decline (quarter-over-quarter)
- Addition of Proposals data coming soon

Cube Users



Cube Usage



Impact

Explorative analytics and power tools

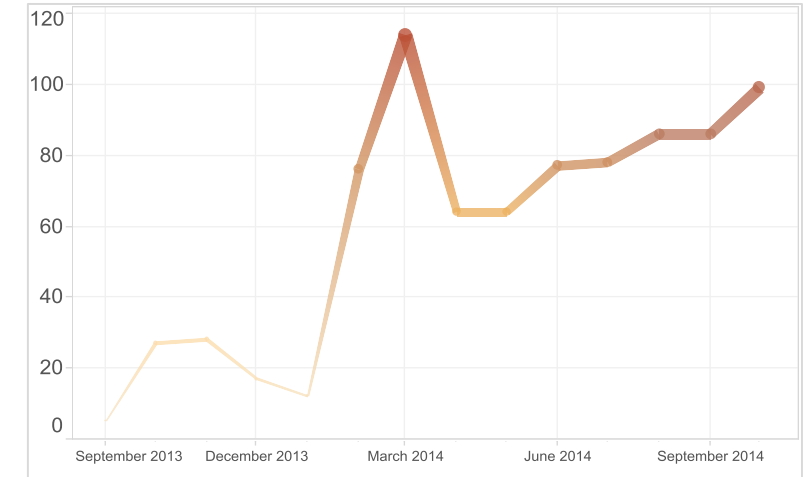
UW Profiles

- Released in Fall 2013
- 1100 Users have access to Profiles
- Viewed by 40+ people daily
- Highest usage by IR in Seattle, Tacoma, Bothell

Course Demand

- Released August 2014
- Daily visibility into unmet course demand

Visualization Users



Visualization Usage

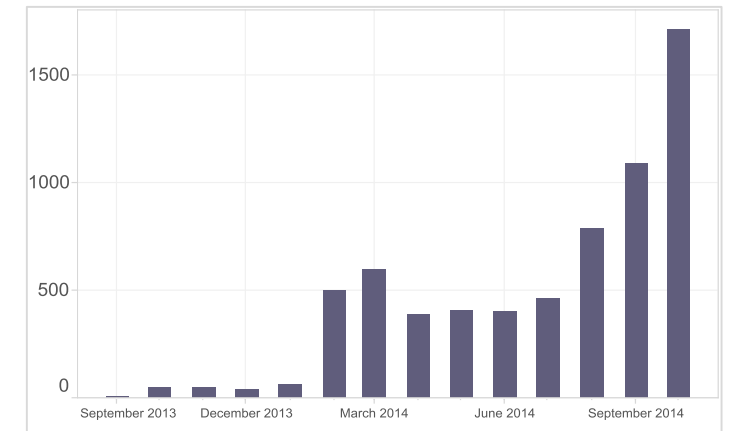


Tableau for students, teaching, faculty & staff

- Tableau for Students

Free to full time students
<http://www.tableausoftware.com/academic/teaching>

Tableau for Students downloads

1,720

UW is #1 worldwide
in higher education downloads

- Tableau for Teaching

Free to faculty teaching with Tableau
<http://www.tableausoftware.com/academic/teaching>

Tableau for Teaching downloads

1,915

students using in classes

UW is #1 worldwide

61

instructors teaching

- Tableau for Faculty & Staff

A fee to create, free to interact
<http://decisionsupport.washington.edu/tableau.html>

Tableau for staff & faculty

135

Tableau Desktop users

500

Tableau Server users





**“combine local
with central data”**

Data Consolidation

Filling gaps and supporting mashups



Data Consolidation

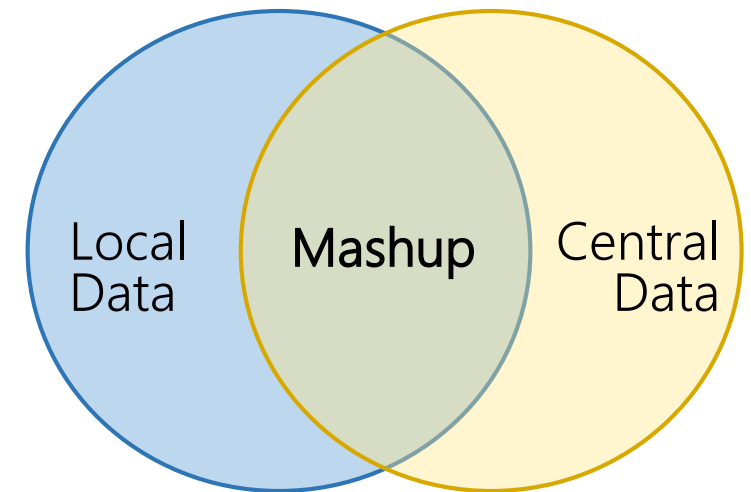
- Tableau supports **mashups**

Users can merge departmental data with central data

Data Management Committee supports publishing mashups on the Tableau Server

- EDDIE tools **incorporates non-source system** master data

e.g. Crosswalk between Academic and Financial organization



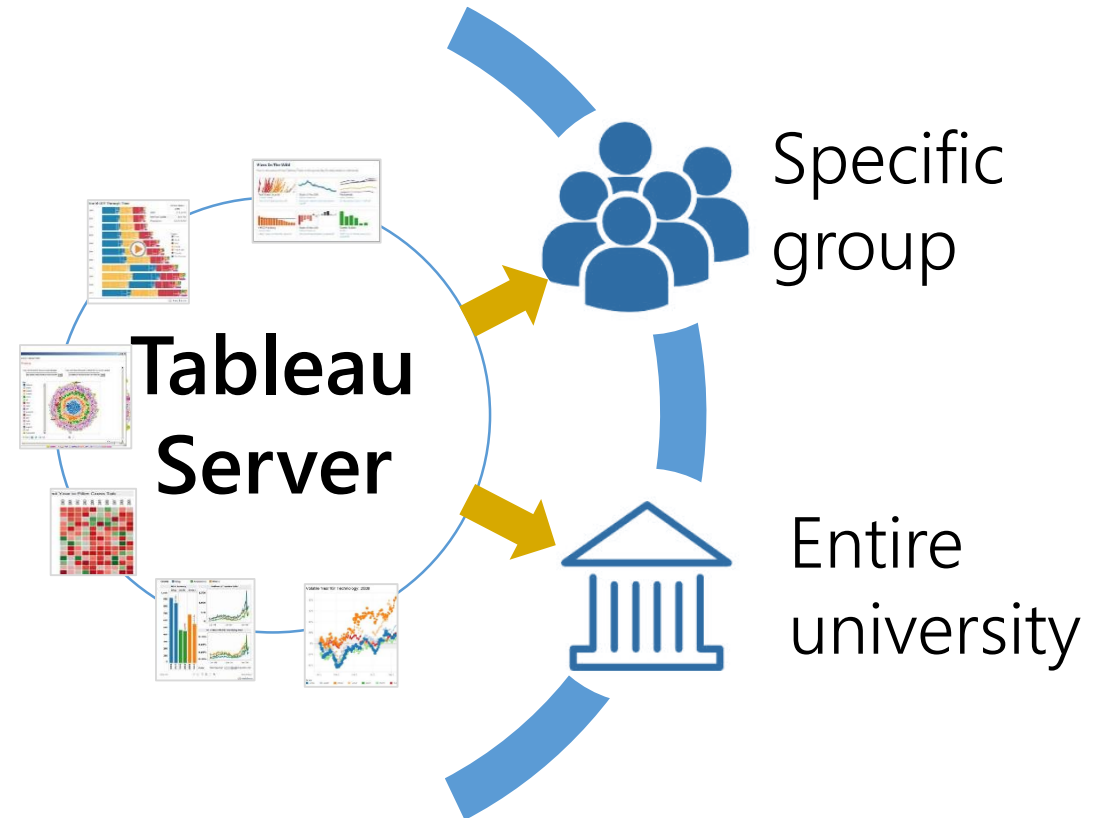
Analytics for all, using local & central data

Visualizations use EDW data, local data, or both

Share and collaborate

Access controlled by owner

Web-based, mobile-friendly





“additional data
faster”

Impact
Targeted delivery



Expanding EDW

Student Application History

- “... expanded access to appl_histroy to more analysts via EDW improved job efficiency and accelerated reporting delivery”

- *Tieming Lin, Director, Market Research/Director, Outreach Reporting Services*

CIP to STEM

- “We can now track our production of graduates against state and federal benchmarks and commitments, are better positioned to receive funding for STEM programs, and can better serve students whose visas are affected by their enrollment in STEM programs”

- *Office of Planning & Budgeting*

State Conversion Attributes

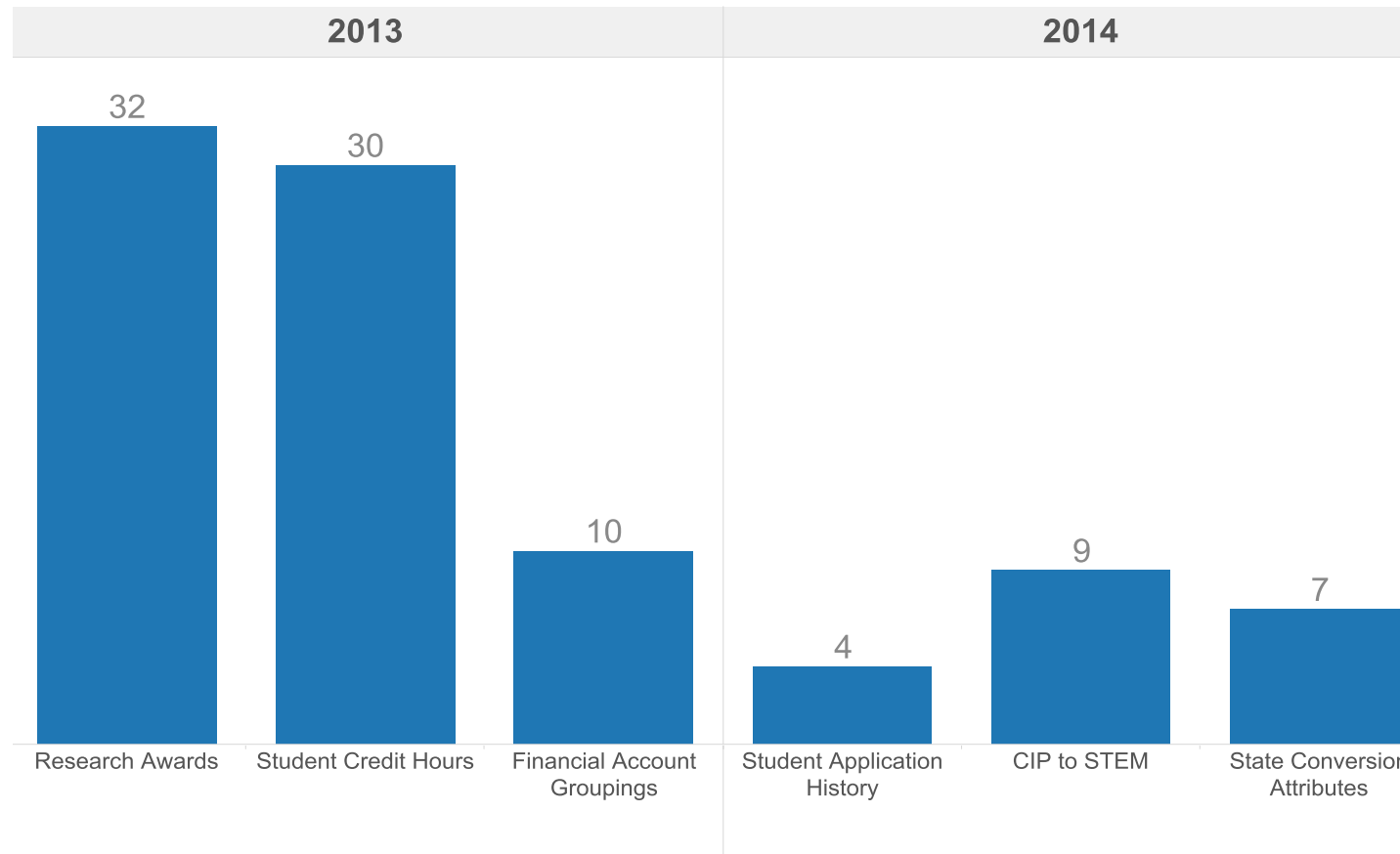
- “THANK YOU to everyone who worked so hard on this project and partnered with us to add some desperately needed functionality to the cube. Really outstanding work done by all!”

- *Dan Schaaf, Director of Financial Accounting*



Rapid Delivery

Weeks spent on EDW data build out projects



Focused scope allowed delivery with FY14 priorities, including:

- Business Intelligence Visualizations
- EDW Technology Renewal
- HR/P Modernization





“credible, consistent,
reliable data environment”

Technology Renewal

Building for the future



EDW Technology Renewal

Results

- Completed in Aug 2014
- Smooth transition for EDW customers
- New hardware & software
- Faster BI and queries
- Ready for future projects (HRP/Finance)

Scale and Impact

- 5000 People with EDW Access
- 700 power users
- 15 servers
- 40 databases
- 2000 tables (5 billion records)



Roadmap & What's Next

Strategic Direction



Enterprise Data & Analytics Vision

WHY

- Advancing the Data-Driven Decision Making Culture
- Satisfied and empowered data users

WHAT

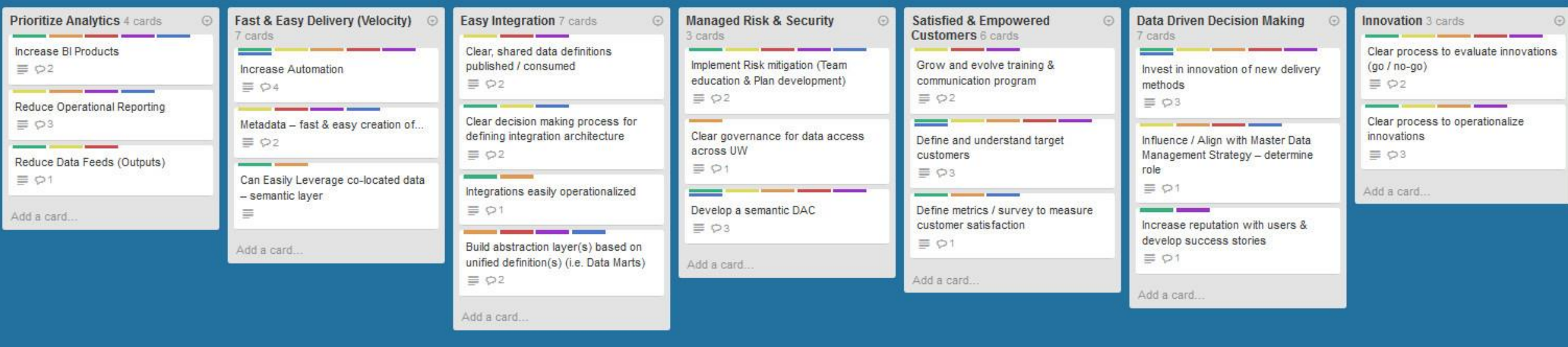
- Easy Integration
- Fast & Easy Delivery

HOW

- Prioritize Analytics
- Manage Risks & Security
- Innovate



Strategic Plan



What's Next



Describing Our Services

Service Catalog Approach

Service Offering	Services Offered
Enterprise Data Warehouse & Analytics	Enterprise Data Warehouse
	Reports/Cubes/Visualizations
	Tableau Licensing
	Education & Training

Capabilities Approach

"Information for Decision Making"

Category	Capability	Description
Administrative Systems	Access and find enterprise data & analytics	Business Intelligence Portal, UW Profiles Portal, Website
	Explore and analyze enterprise data	Reports, cubes, visualizations, Tableau license and user management
	Understand enterprise data	Training and education, metadata repository
	Produce enterprise data	Master data, metadata
IT Management	Consulting	Information design, analysis and architecture, security & data access; extract, transform, and load data

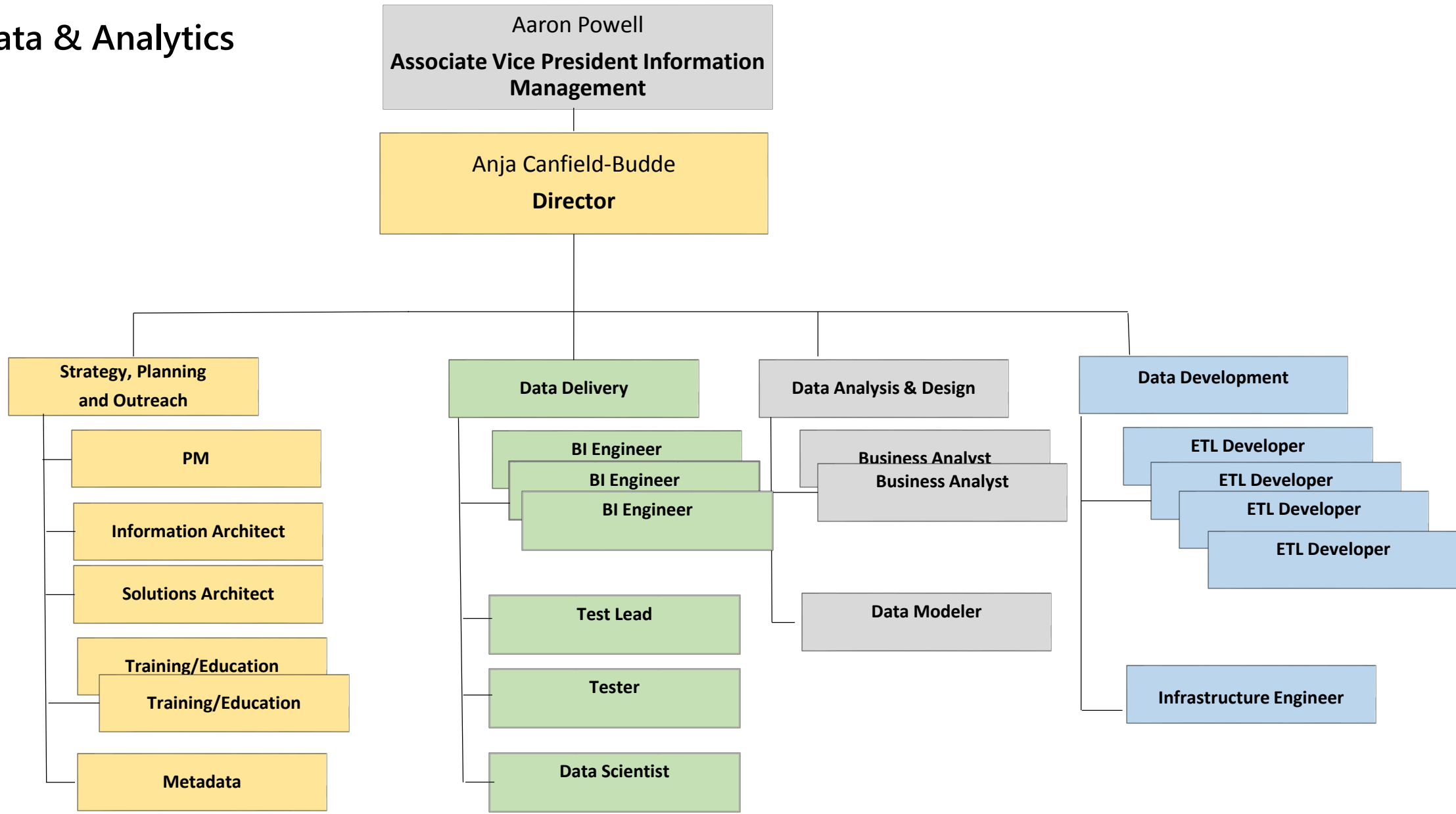


Appendix



Enterprise Data & Analytics

(July 2014)



Administrative Policy Statements

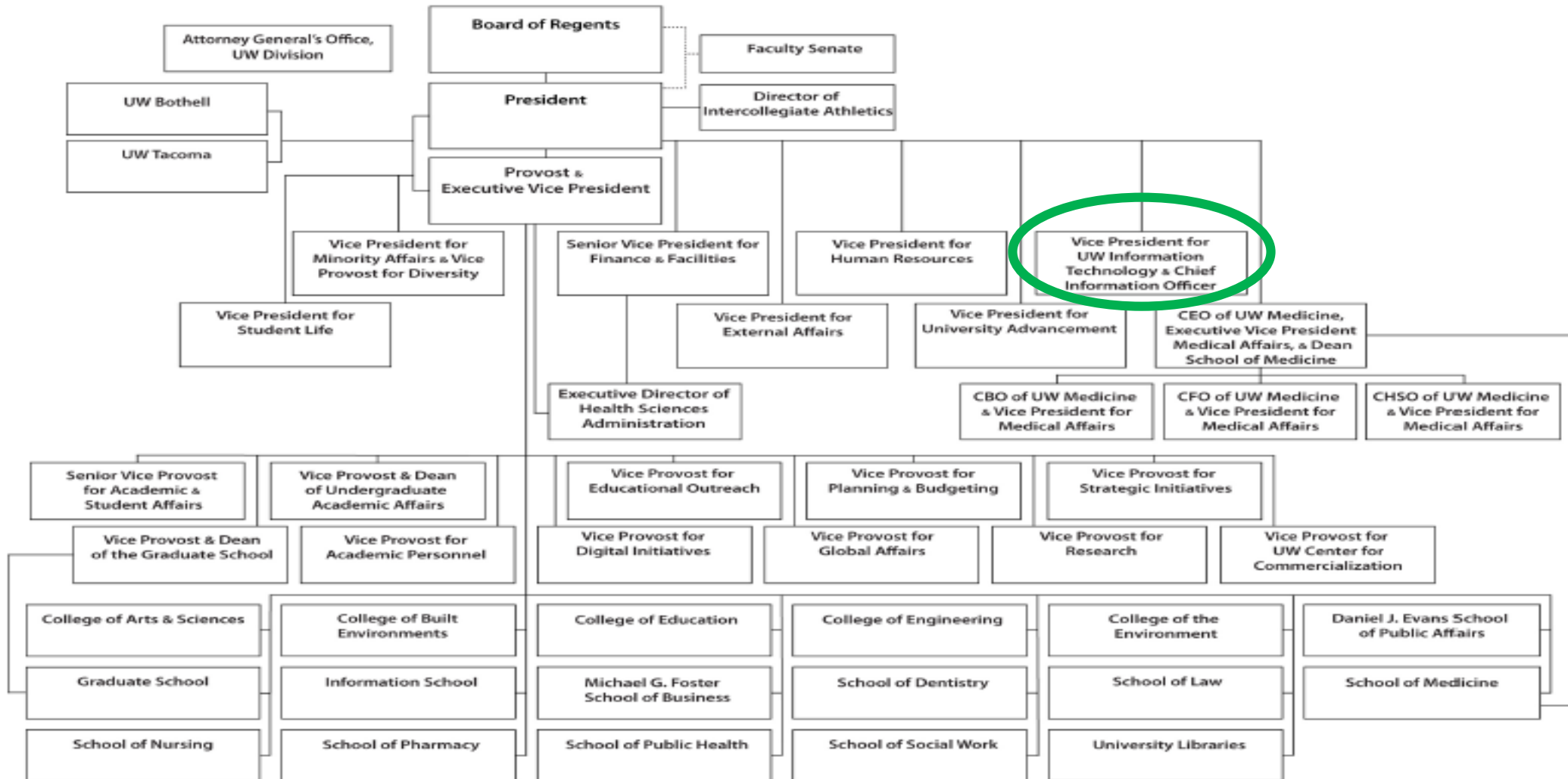
January 8, 2014

1.1

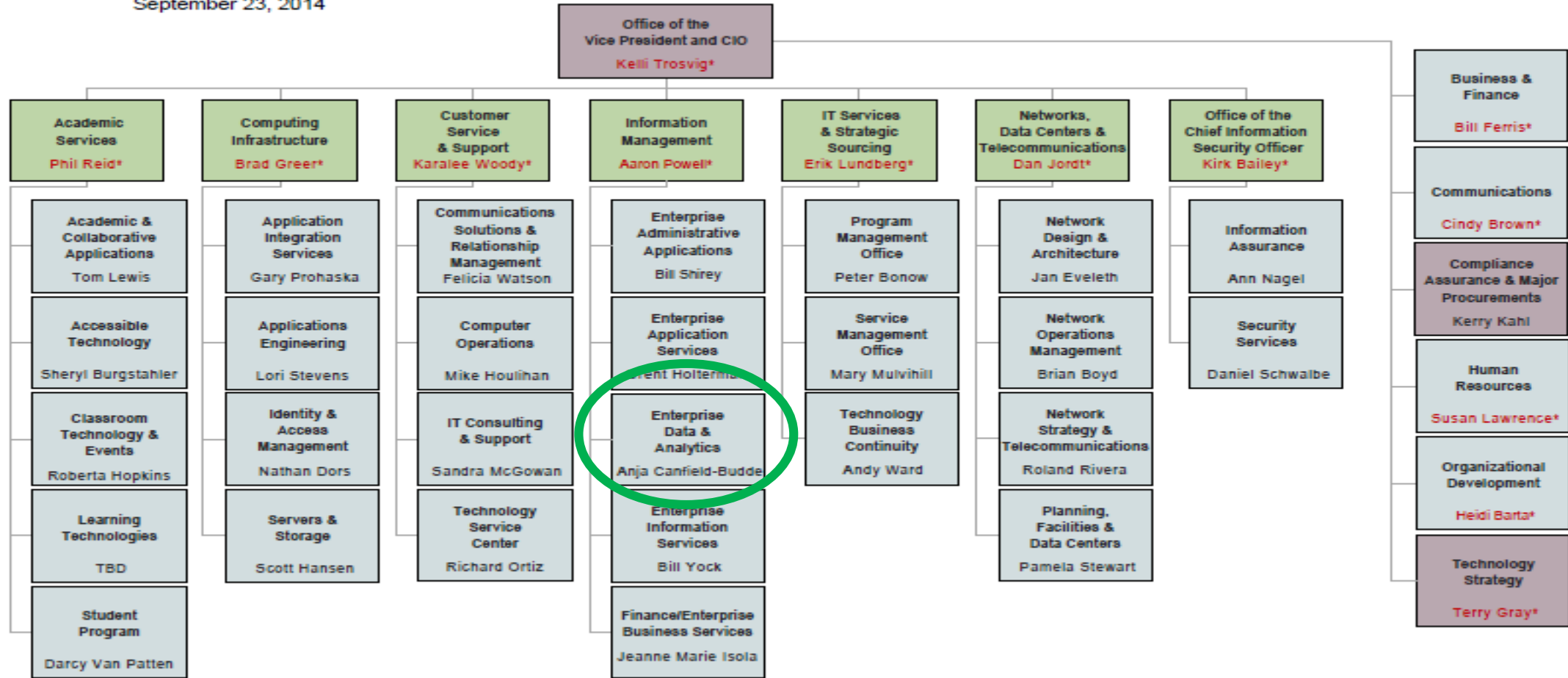
University Organization Chart

(Approved by the President by authority of the Board of Regents Governance, Standing Orders, Chapter 1)

This chart reflects the reporting relationships within the University of Washington. Select any box on this chart to link to more detailed information in APS 1.2, University Wide Leadership List.



Hierarchical Organizational Chart
September 23, 2014



Organization Level - Legend



* Senior Leadership