



IT Service Investment Board

April 21, 2014

Agenda

- UW-IT Portfolio Scoring Process
- Scoring Results
- TRF Update
- Wrap Up

UW-IT Portfolio Scoring Process

Purpose

Many projects --51

- 287,000 hours
- all important
- but... *far greater than our capacity*
- and... *HR/Payroll requiring greater resources*

What to do?

Prioritize

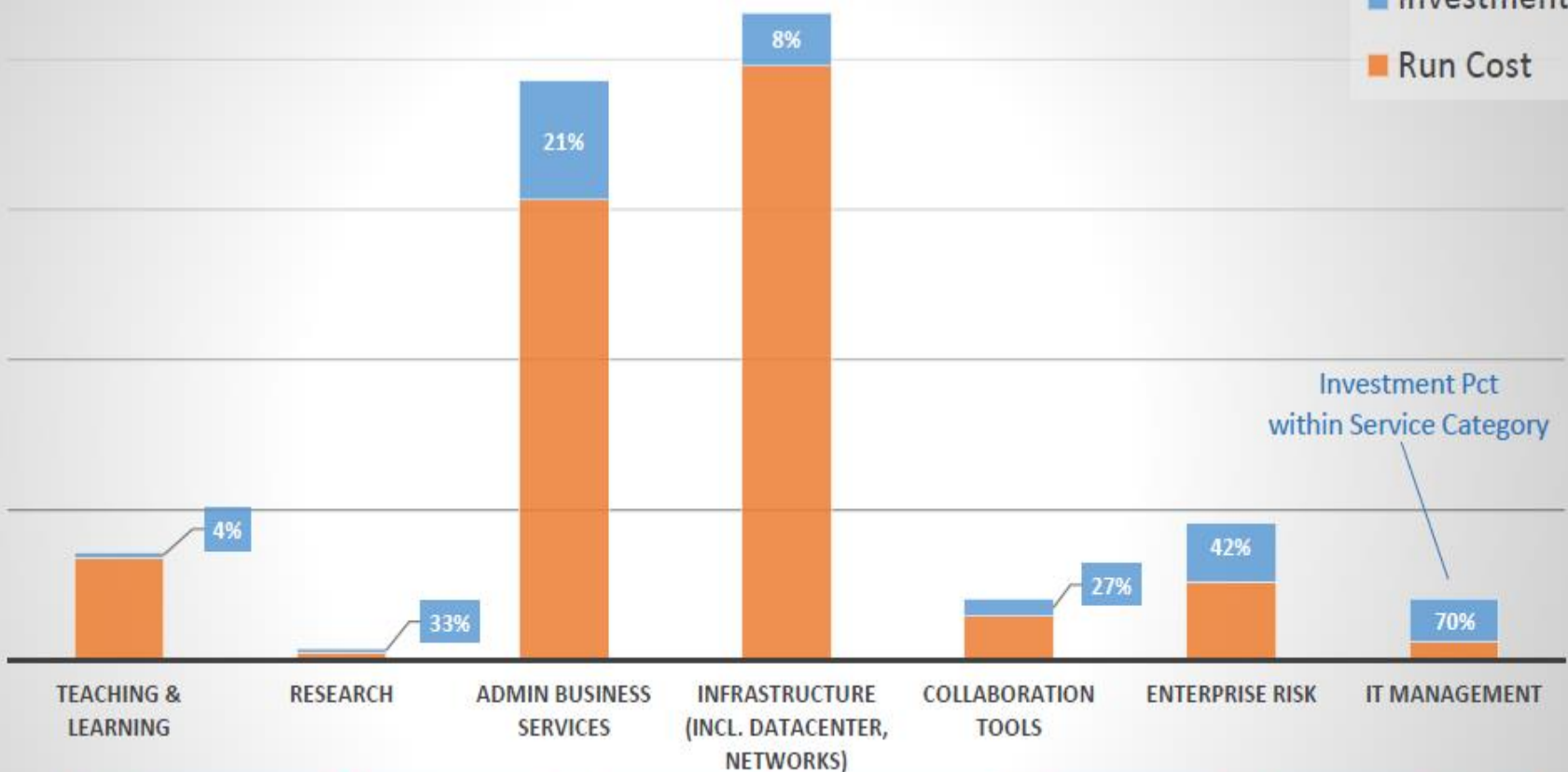
Service Categories

- Teaching & Learning
- Research
- Administration / Business
- Infrastructure
- Collaboration (*cross-cutting*)
- Enterprise Risk (*cross-cutting*)
- IT Management (*organizational overhead*)

UW-IT Service Portfolio

Expenditures & Strategic Allocation* - FY14[†]

■ Investment
■ Run Cost



Investment Pct within Service Category

Category	TEACHING & LEARNING	RESEARCH	ADMIN BUSINESS SERVICES	INFRASTRUCTURE (INCL. DATACENTER, NETWORKS)	COLLABORATION TOOLS	ENTERPRISE RISK	IT MANAGEMENT
Category Spend	7%	1%	36%	40%	4%	9%	4%
Investment Allocation	1%	1%	40%	18%	6%	19%	14%

[†]Expenditures from first half of year, annualized

*Labor only

Timeline - FY 2015

January, 2014	Business Case development
February	PRB scoring and ranking (all)
March	SIB scoring and ranking (~10-12)
April	SIB review results and discussion (initial)
May	SIB second scoring (if warranted) Final discussions and recommendations

Overview of Business Case Proposals

- **Teaching & Learning**
 - Academic Explorer
 - MyHusky Experience – Implementation
 - Curriculum Management - Build Out
- **Administration/Business Systems**
 - Seattle Undergraduate Admissions Modernization
 - HR/Payroll – Core Implementation and Integrations
 - Enterprise Business Services Program - Startup
 - Financial System Modernization: Discovery
- **Research**
 - Storage, Consulting & Tools for Researchers
- **Collaboration**
 - Network-based Collaboration Apps

Teaching & Learning

Academic Explorer

COLLEGE OF ARTS AND SCIENCES
GENERAL EDUCATION REQUIREMENTS

- OK English Composition
- OK Foreign Language
- OK Quantitative and Symbolic Reasoning
- OK Writing across the curriculum (W-courses) and/or add

AREAS OF KNOWLEDGE

- NO Complete the following three requirements and a total from any will apply. (36 from one area may apply if or

Earned: 75 credits Needs: 1 requirement

- NO Visual, Literary, and Performing Arts

Earned: 15 credits Needs: 5 credits

COURSES USED TO SATISFY THIS REQUIREMENT

Qtr	Course Name	Transfer Credit
0000	ENGL 305	TRANSFER CREDIT
SU93	ENGL 359	CONTEMPORARY
		342

MyPlan

[Plan](#) [Find Courses](#) [Audit Degree](#)

Academic Year 2012-2013

Quarter 1 Year

Print your entire academic plan

Create your plan by finding and adding courses and their sections to any quarter. [Learn more](#)

AUTUMN 2012
WINTER 2013
SPRING 2013
SUMMER 2013

MyPlan

[Plan](#) [Find Courses](#) [Audit Degree](#)

Spring 2013

Quarter 1 Year

Print your entire academic plan

View your courses and add or delete scheduled sections for each course to your plan. Remember that MyPlan allows you to create an academic plan, but does not currently check your eligibility for planned courses or sections, and does not register you. Registration is available via the [Registration](#) page.

SPRING 2013

Planned Courses

MUSIC 250 WORLD MUSIC (3)									
A	Lecture (3)	MWF	9:30 AM - 10:20 AM	MUS	027	16760	—	10 / 30	✕
A	Lecture (5)	MWF	2:30 PM - 3:20 PM	GWN	301	19115	Add Code Required	108 / 180	✕
AB	Quiz	TTh	9:30 AM - 10:20 AM	DEN	314	19117	Add Code Required	24 / 30	✕
ECON 200 INTRODUCTION TO MICROECONOMICS (5)									
A	Lecture (5)	TTh	11:30 AM - 12:50 PM	KNE	130	13025	—	467 / 500	✕
AC	Quiz	F	9:30 AM - 10:50 AM	CMU	120	13028	—	46 / 50	✕

Planned

MUSIC 250 A (3)	ECON 201 (5)
STAT 311 A, AB (5)	⚠ NEAR E 260 (3)
ECON 200 A, AC (5)	Add a course to plan
ECON 235 (5)	Add a course to plan

Credits: 18

Backup

ENGL 111 (5)	ENGL 111 (5)
Add a course to plan	Add a course to plan

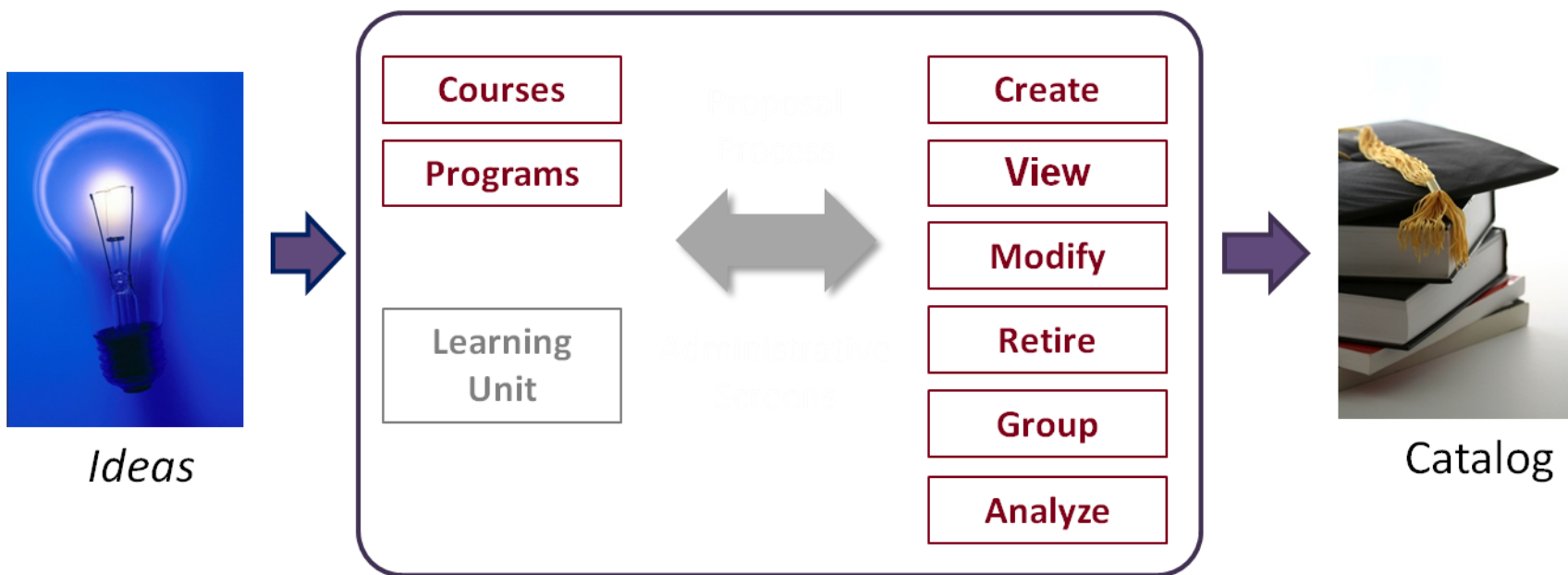
Credits: 8

Backup

MyHusky Experience - Implementation



Curriculum Management - Build Out

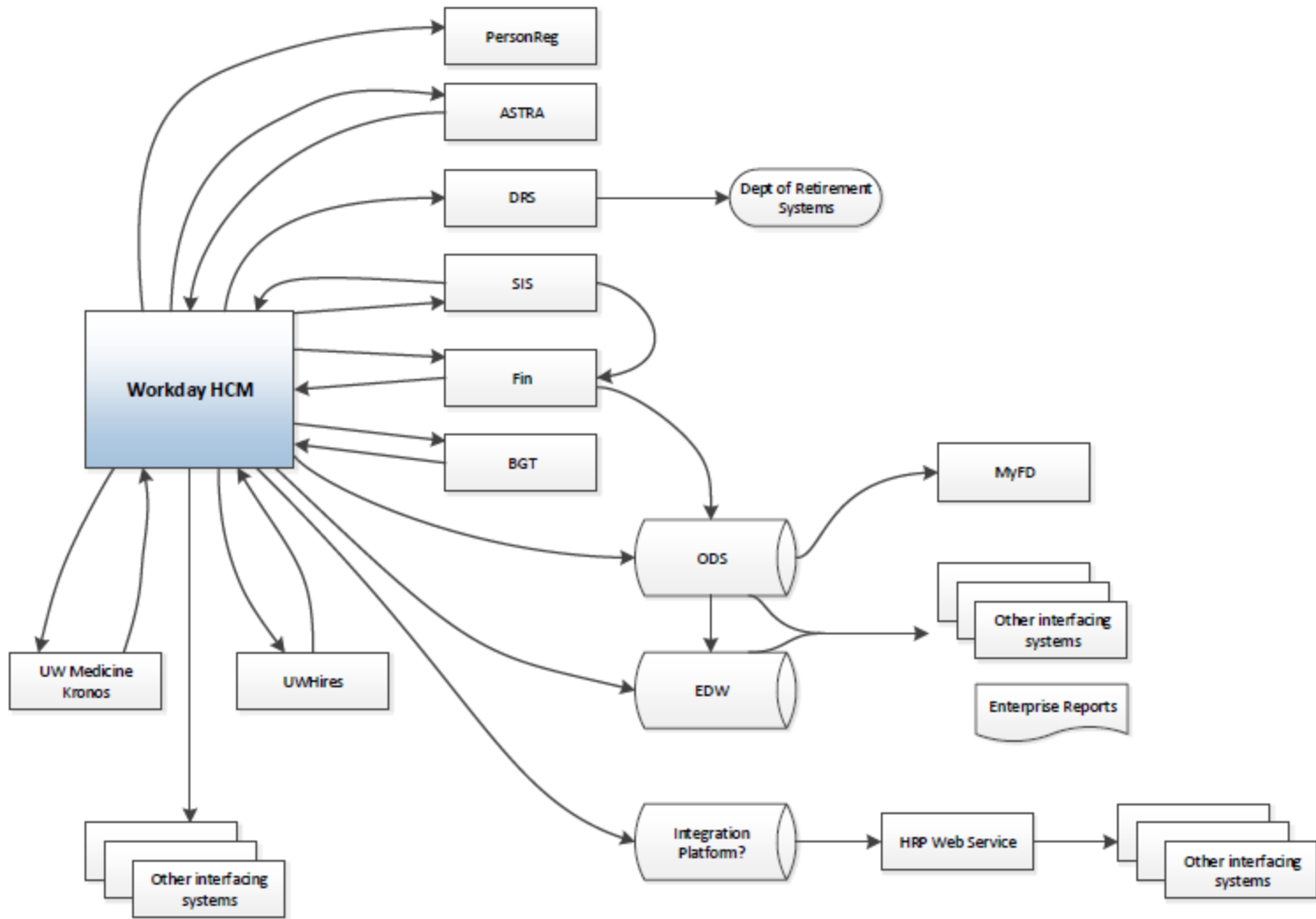


Administration/Business Systems

Seattle Undergraduate Admissions Modernization



University of Washington Workday HCM Enterprise Integration



Enterprise Business Services Program - Startup



B
u
s
i
n
e
s
s

A
r
c
h
i
t
e
c
t
u
r
e

Document Management (EDMS) Fully Funded

- Project scoping/planning – ID need for other components
- Resourcing (cookbook approach/unit resource contributions)
- Project Implementation

Workflow (AIS) 1 FTE

- Require LEAN project as prioritization criteria
- Project scoping/planning – ID need for other components
- Resourcing (cookbook approach/unit resource contributions)

Lean/Agile Business Process Transformation 1 FTE

- Coordinating with OEP & F2 (Ruth Johnston/LuAnn Stokke)*
- Lean/Agile Approach
- Toolkit for initiating a Lean Project; identify both non-technical and technical improvements supported by the tools.
- EDMS & AIS Staff trained to “pull” LEAN outcomes

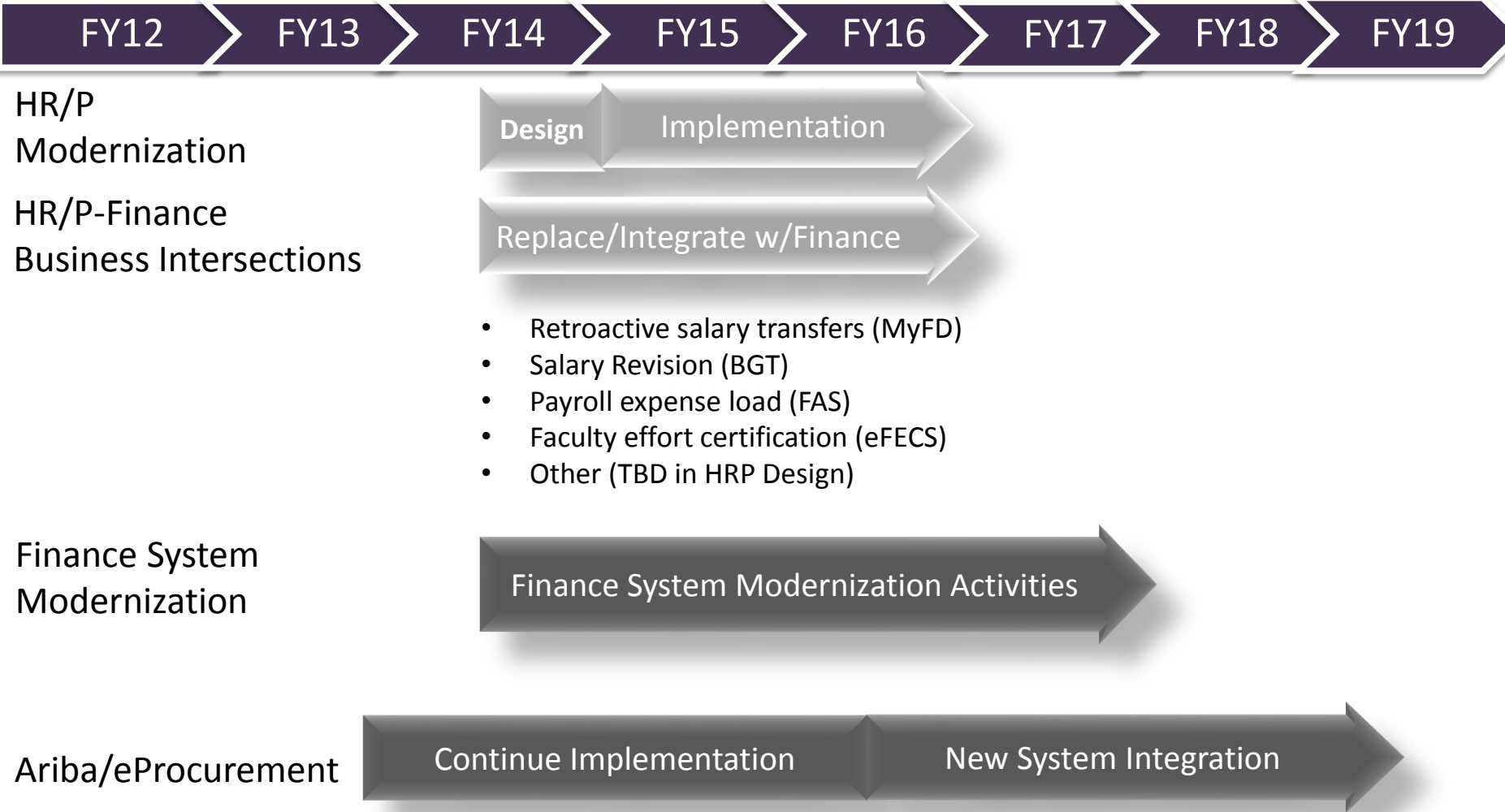
Web Services/integration (AIS) 1 FTE

- Defined as workflow requirements associated with document/data utilized to streamline business process
- TBD – direct or indirect service

Web Forms/Applications & Notifications 1 FTE

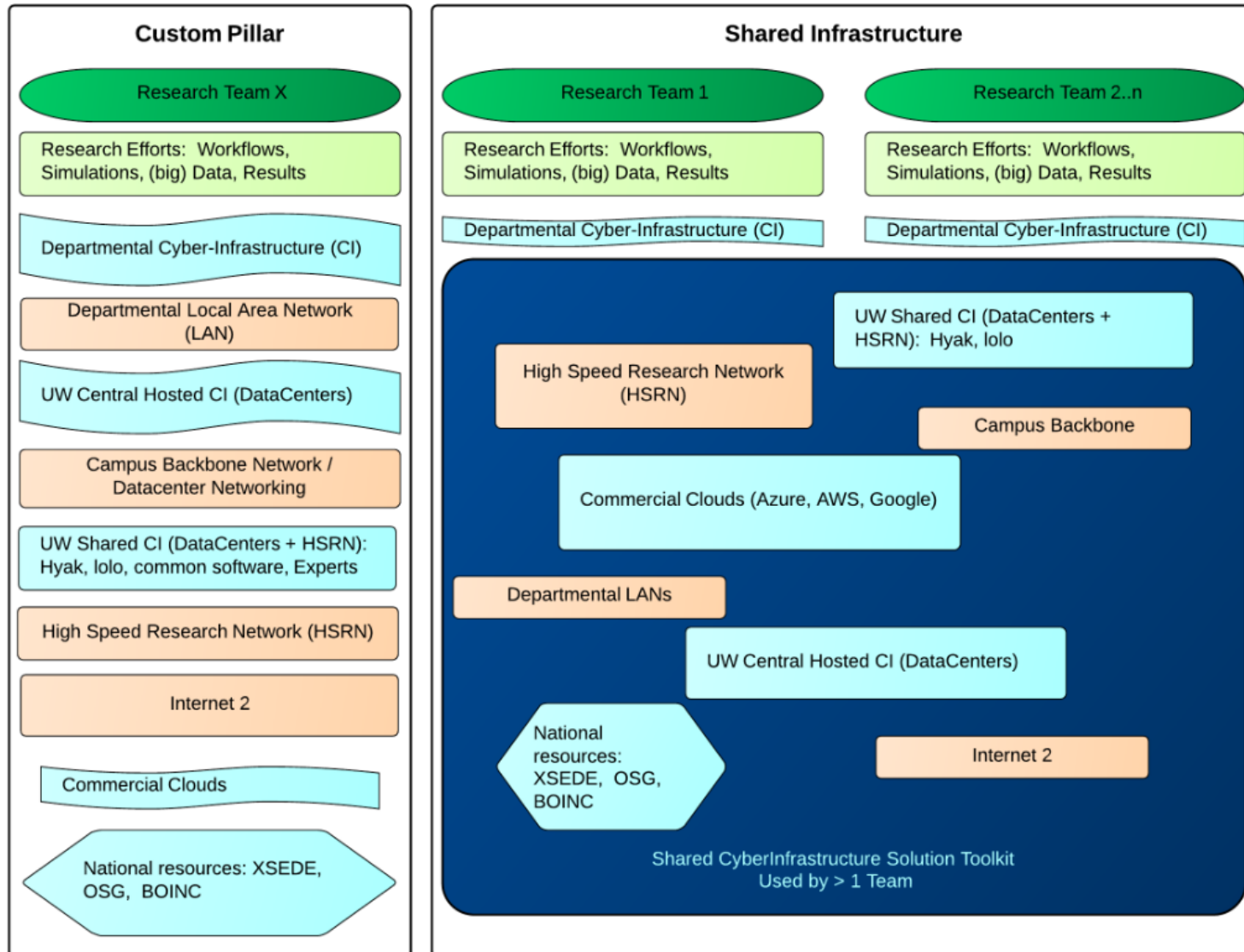
- Canned forms that can be modified to provide a user interface for each step

Financial Systems Modernization Roadmap



Research

Storage, Consulting & Tools for Researchers



Cyber-Infrastructure includes: Applications, Code Libraries, Analysis tools, UW Middleware Integrations (Identity, Groups, Job Queuing, ..), Servers and Storage (HPC+scratch, commodity, shared, archival, ...) and Experts that know how to use and maintain.

Collaboration

UW-IT Collaboration Services

COLLABORATION SERVICES

<p>1. Avaya Softphone</p>	<p>2. Voicemail Integration</p>	<p>3. Phone Integration: MS Lync 4. Phone Integration: Google Apps</p>	<p>5. Fax Server</p>	<p>6. Audio Conference Integration</p>	<p>7. Video Conferencing Integration</p>
----------------------------------	--	--	-----------------------------	---	---



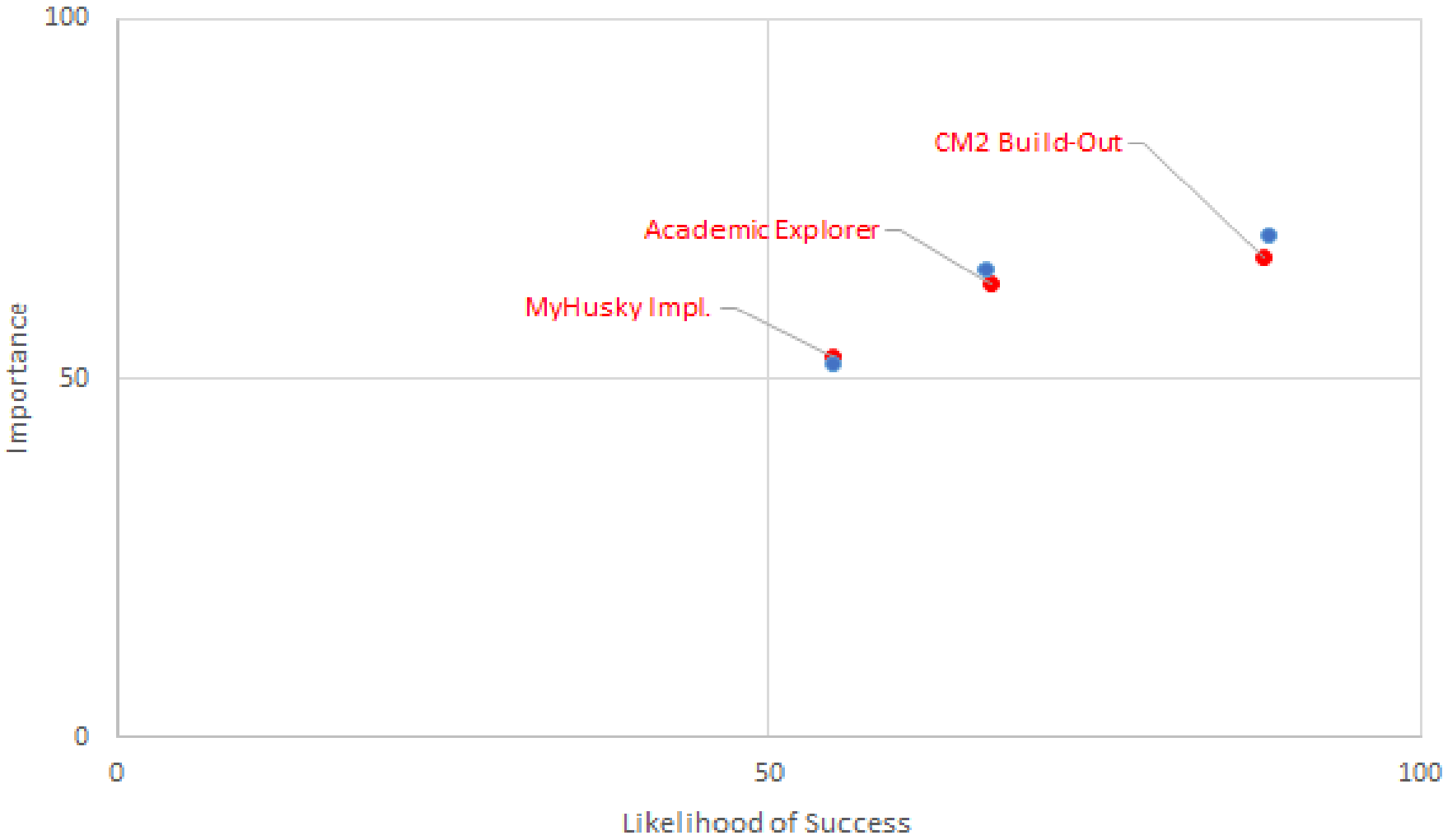
UW Telephone Core Infrastructure



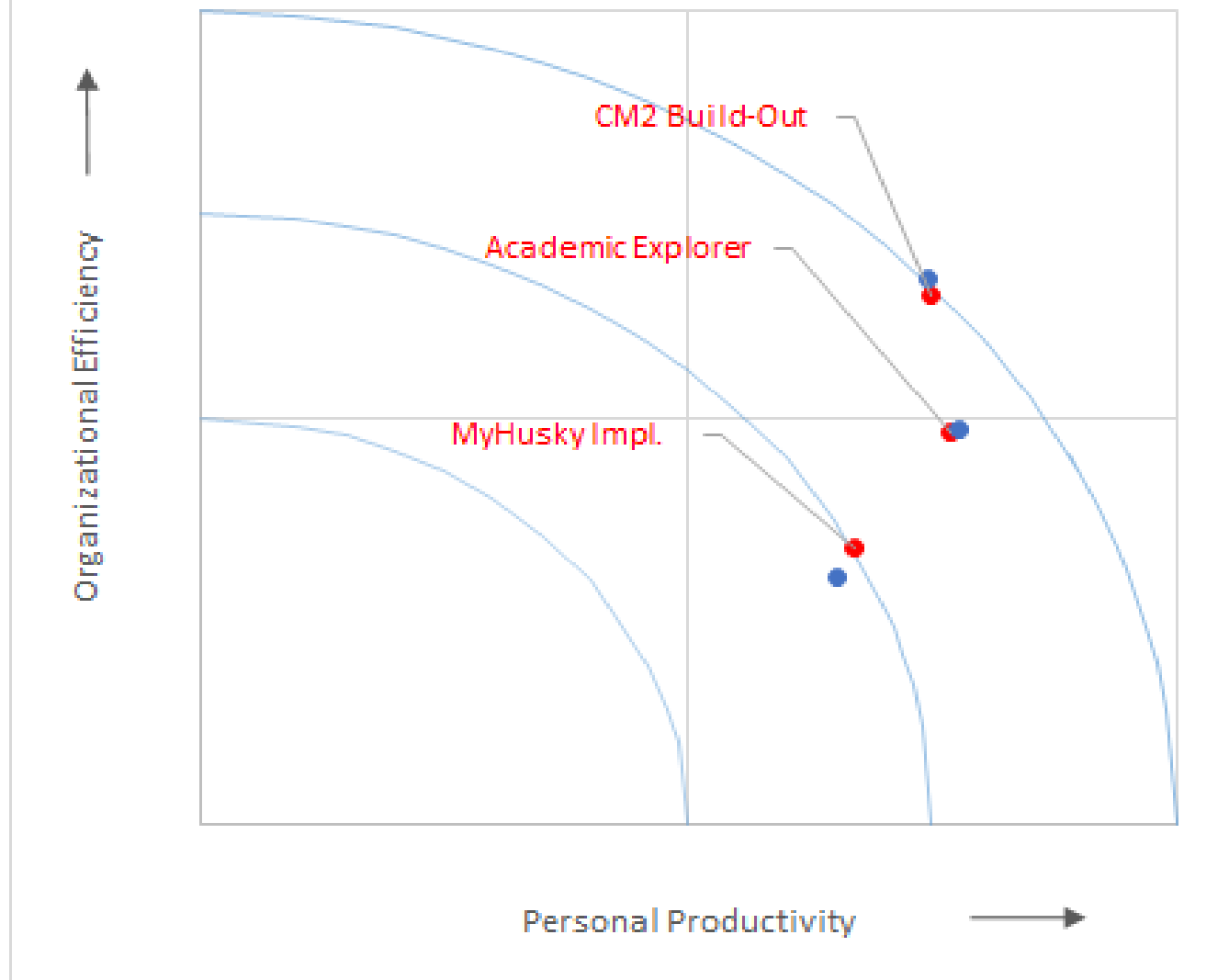
UW Data Center

Scoring Results

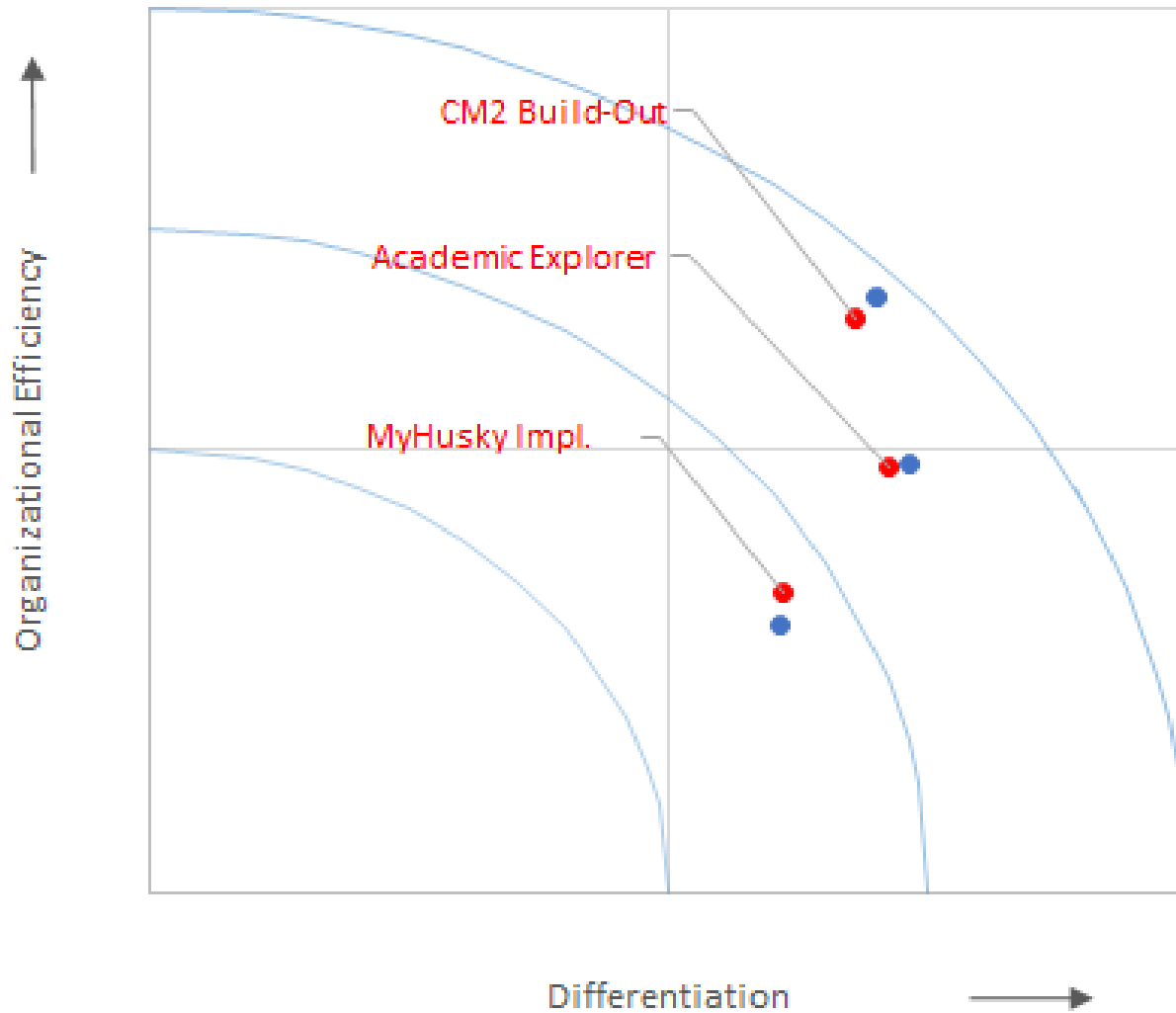
Teaching & Learning Basic Metrics



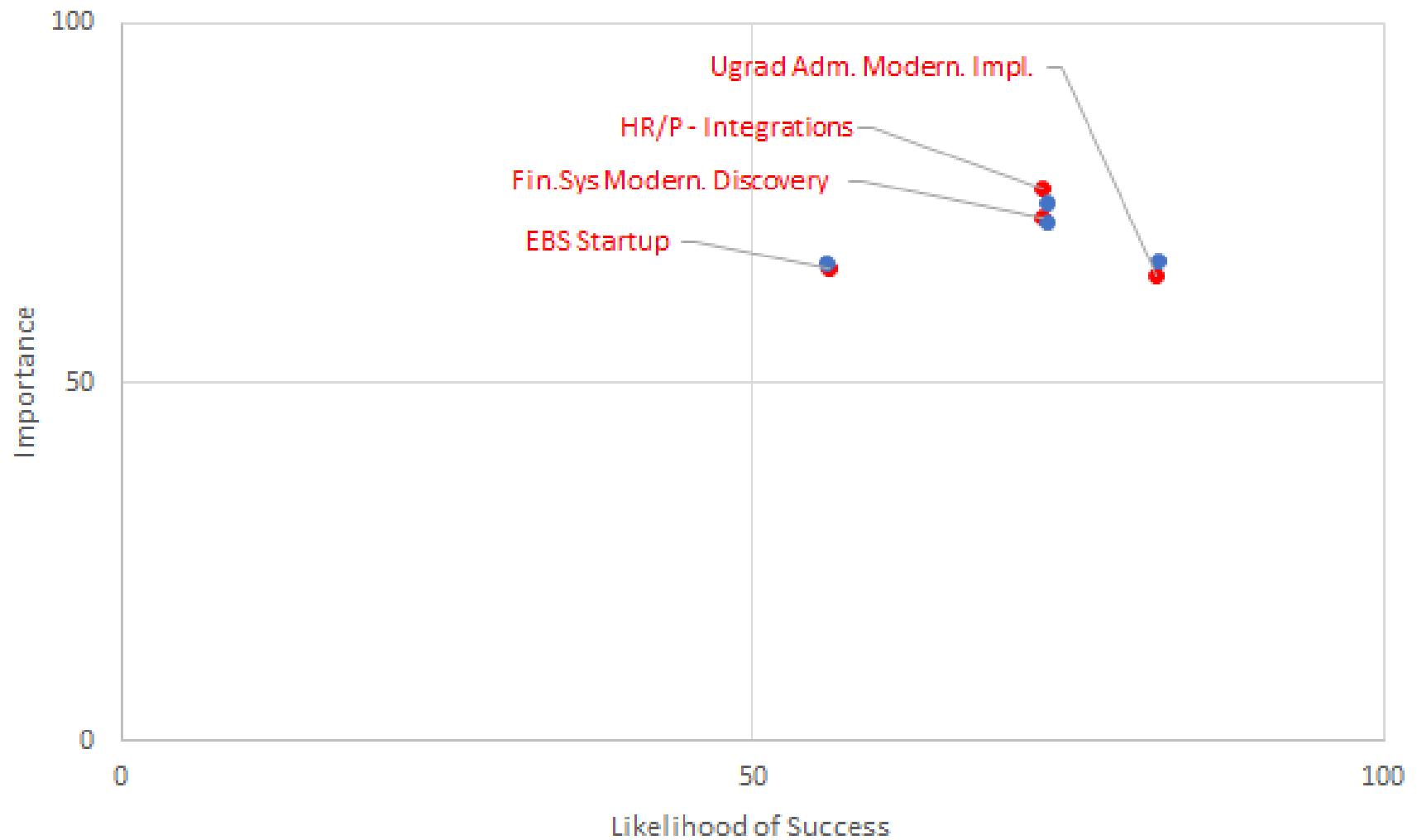
Teaching & Learning Who Benefits?



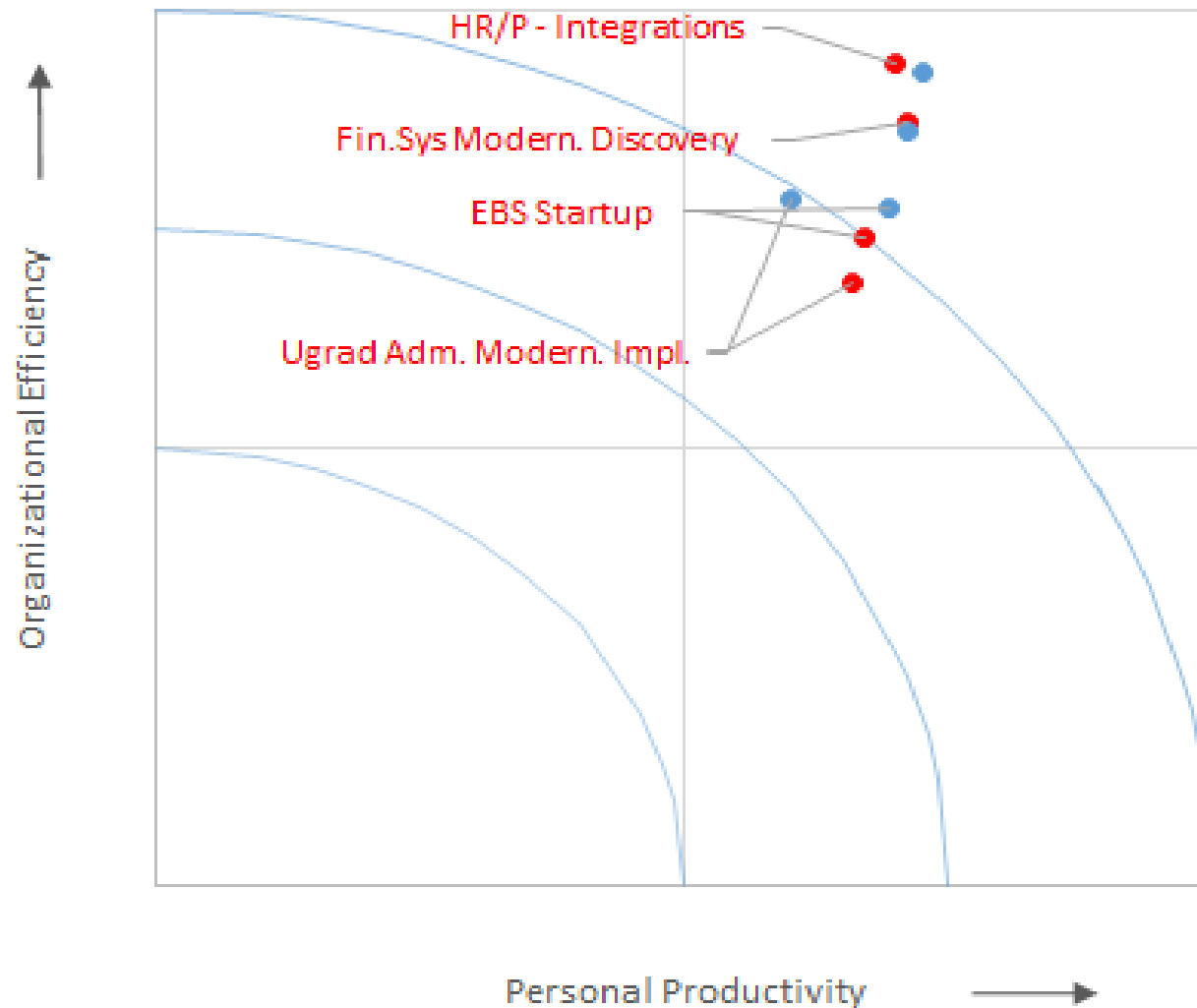
Teaching & Learning Impact - Visible or Hidden?



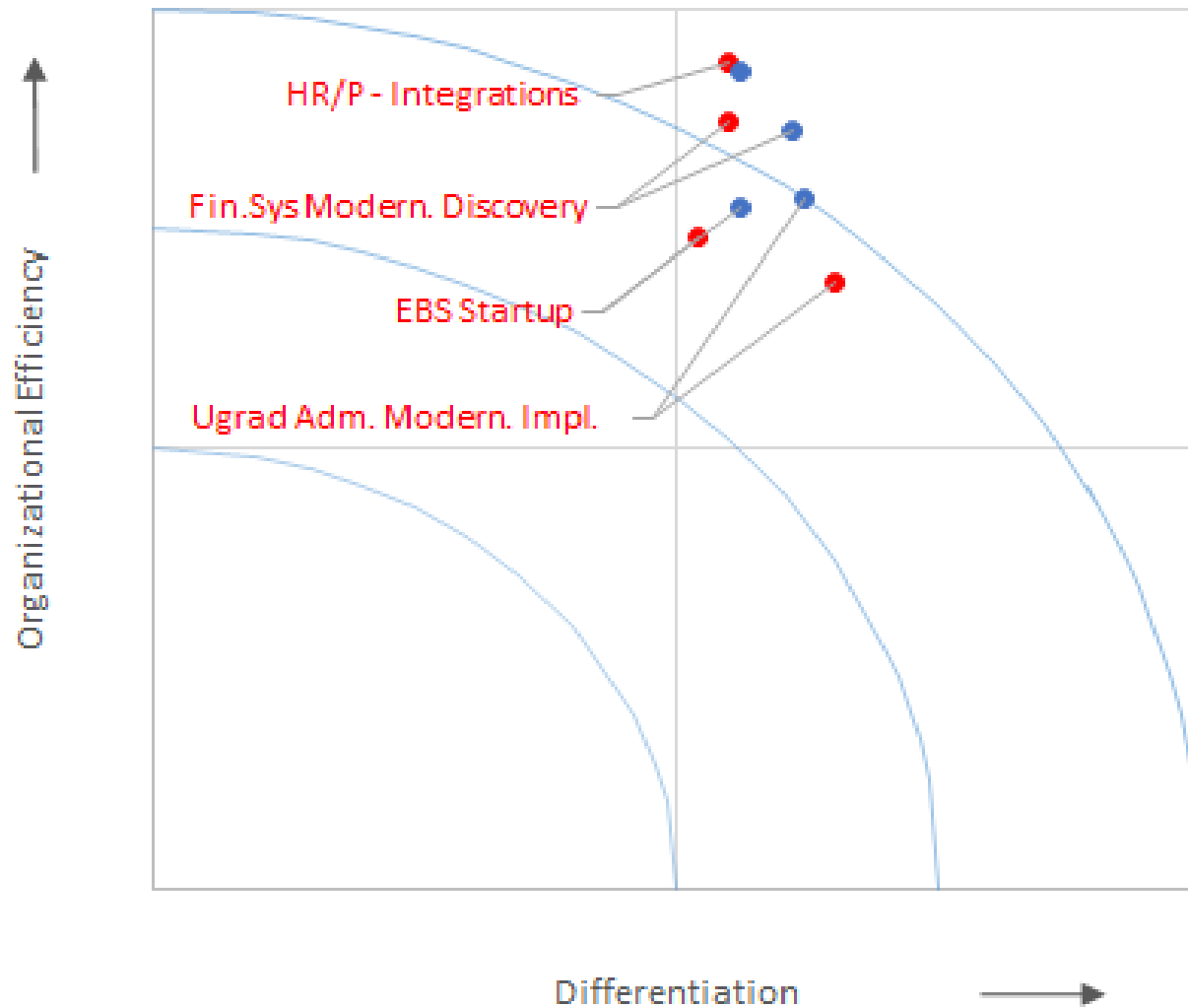
Admin / Business Basic Metrics



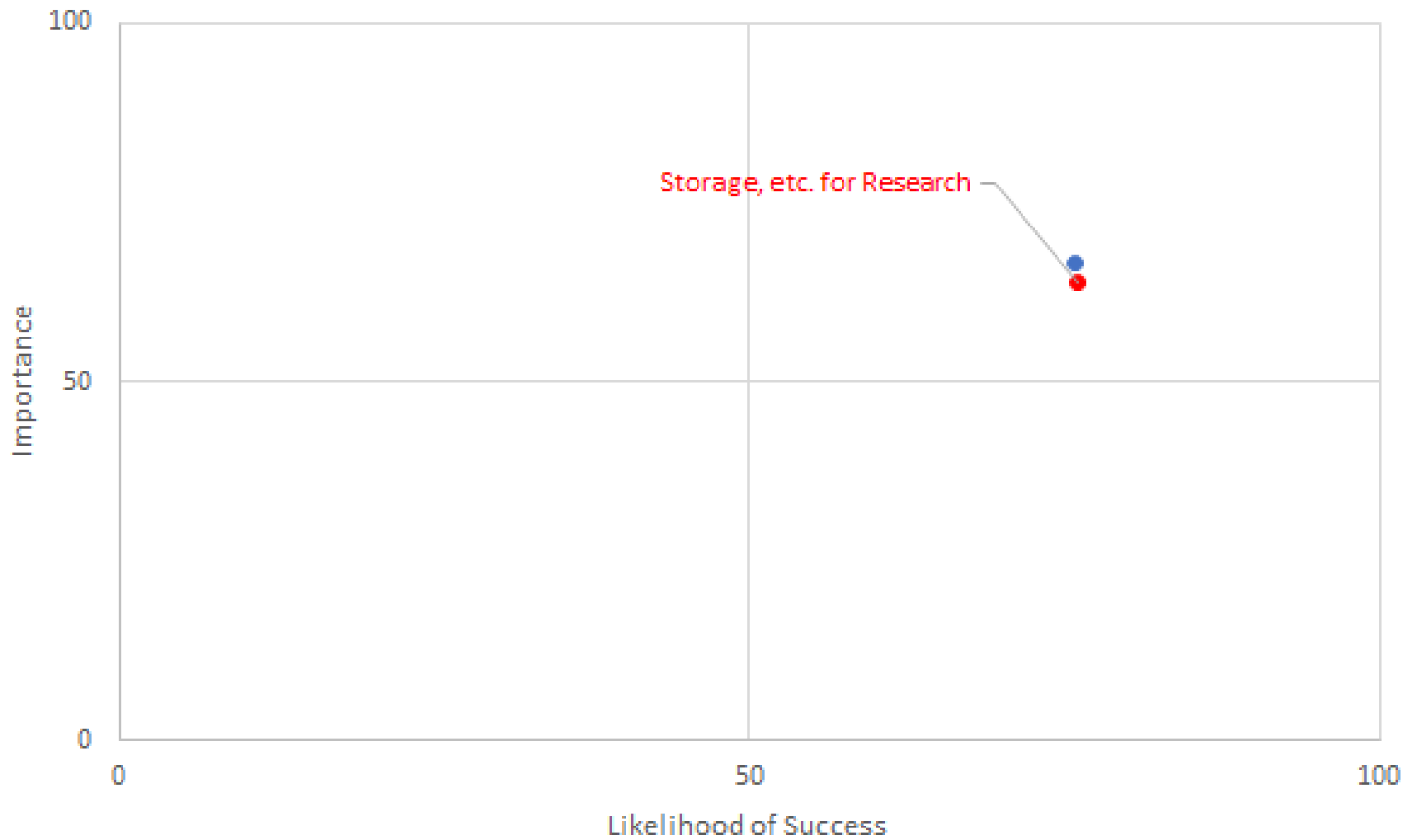
Admin / Business Who Benefits?



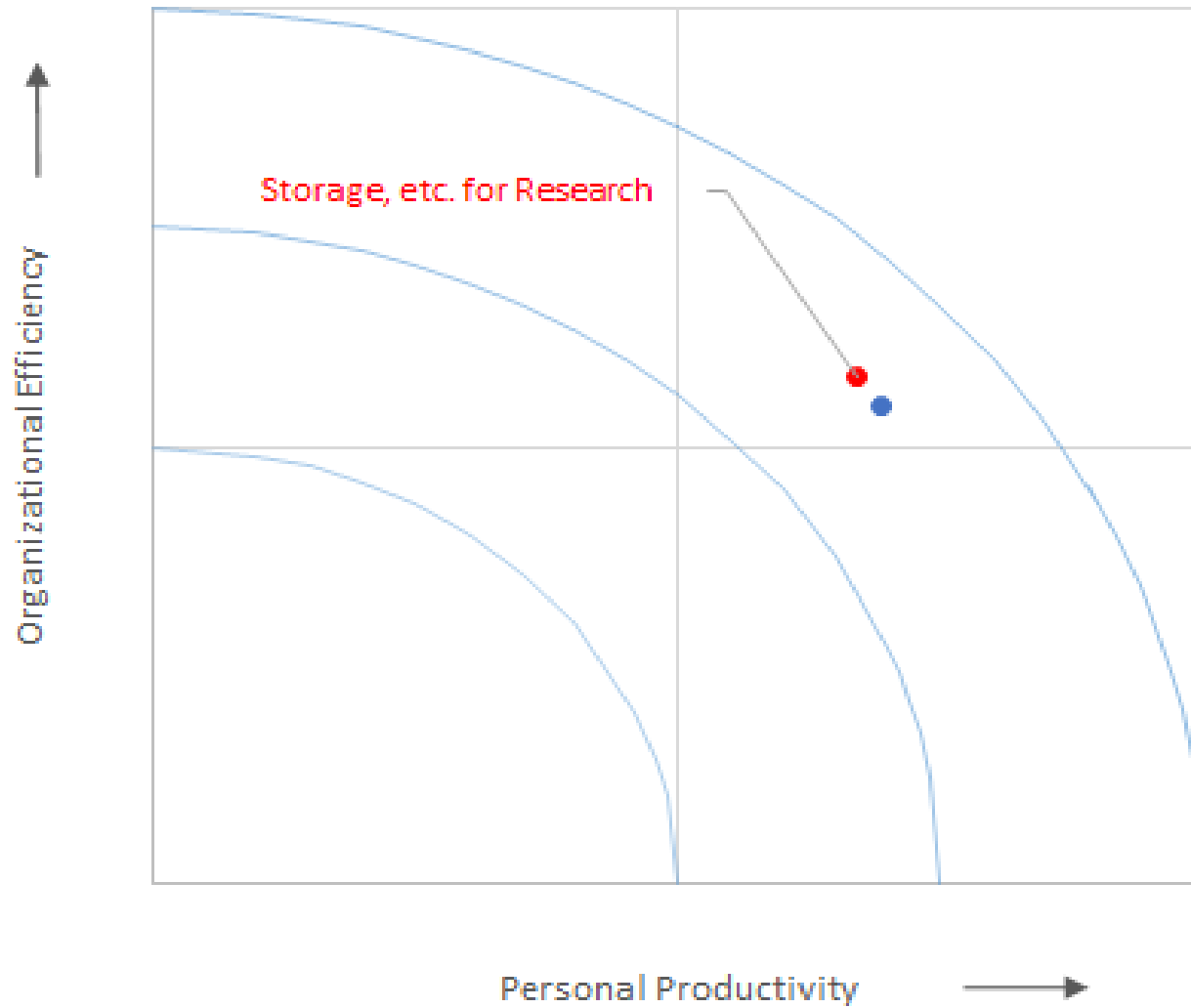
Admin / Business Impact - Visible or Hidden?



Research Basic Metrics

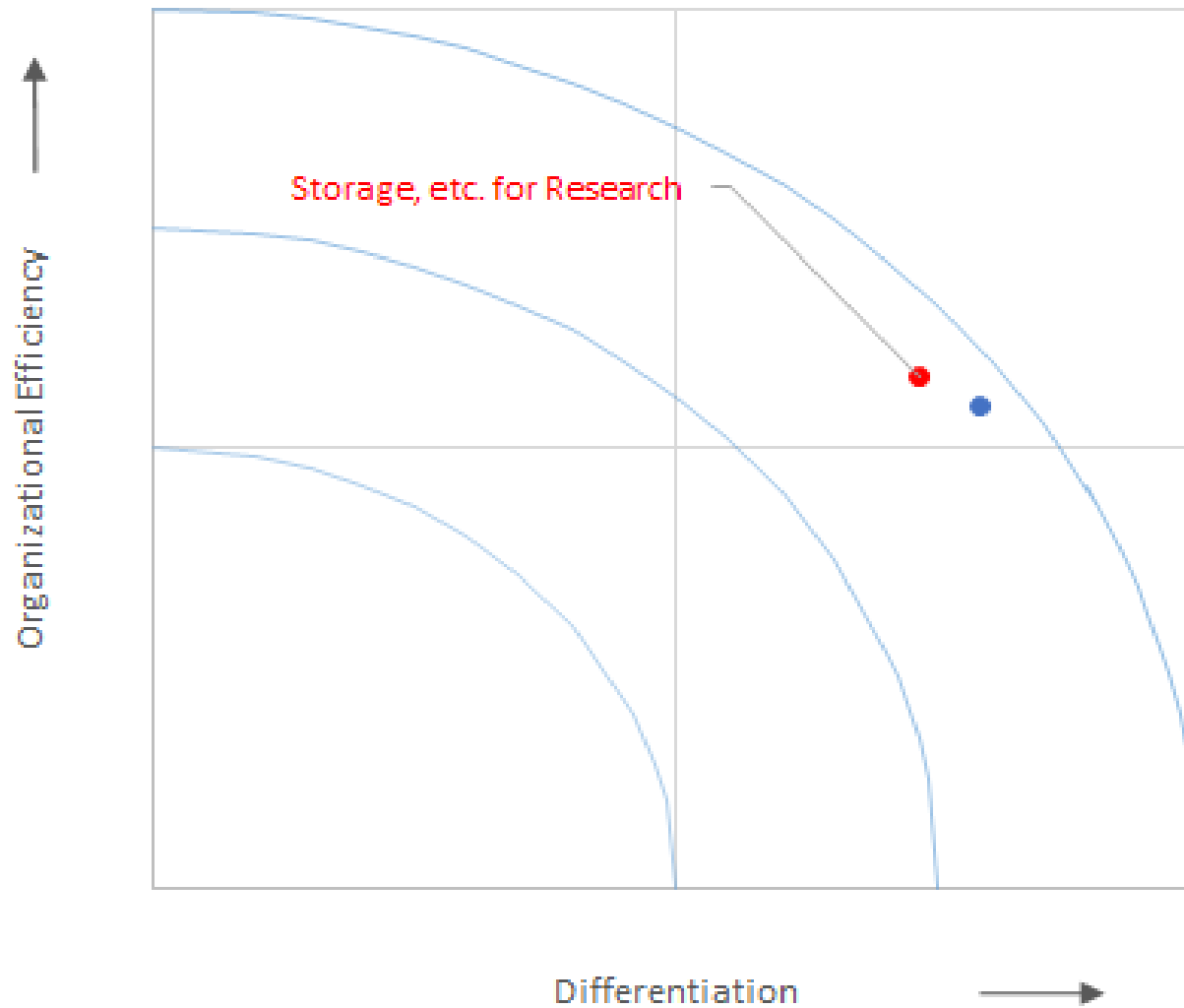


Research Who Benefits?

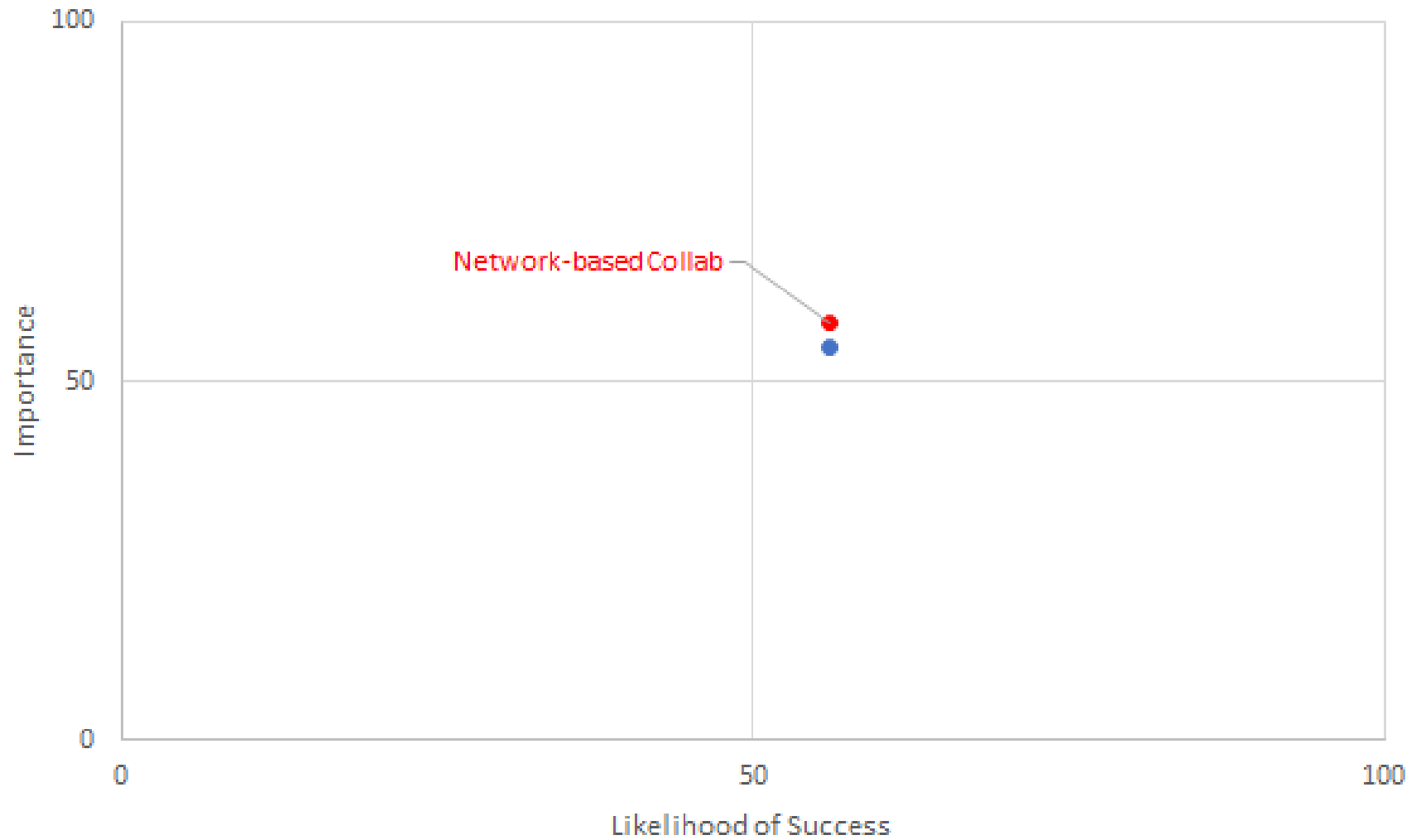


Research

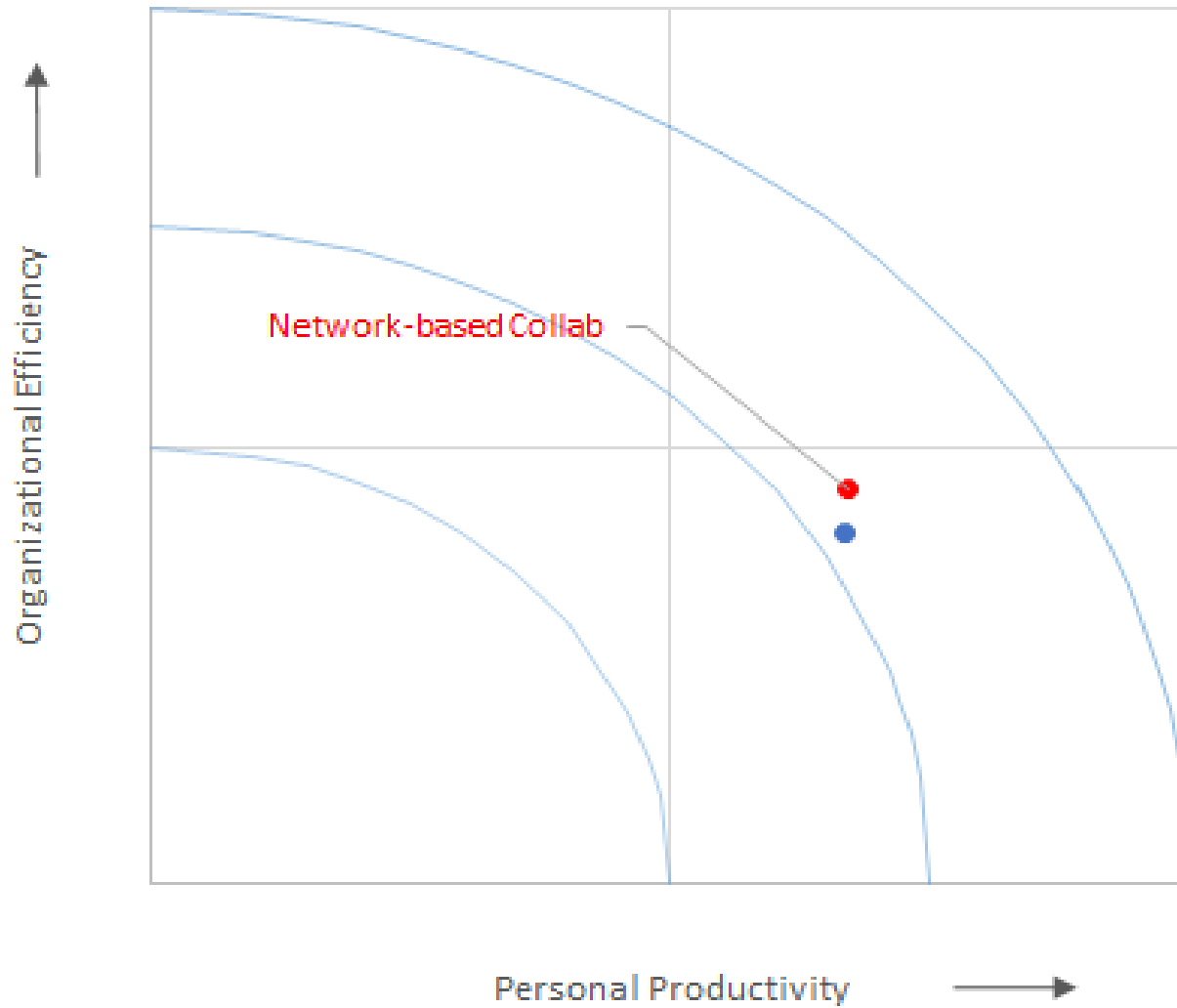
Impact - Visible or Hidden?



Collaboration Basic Metrics

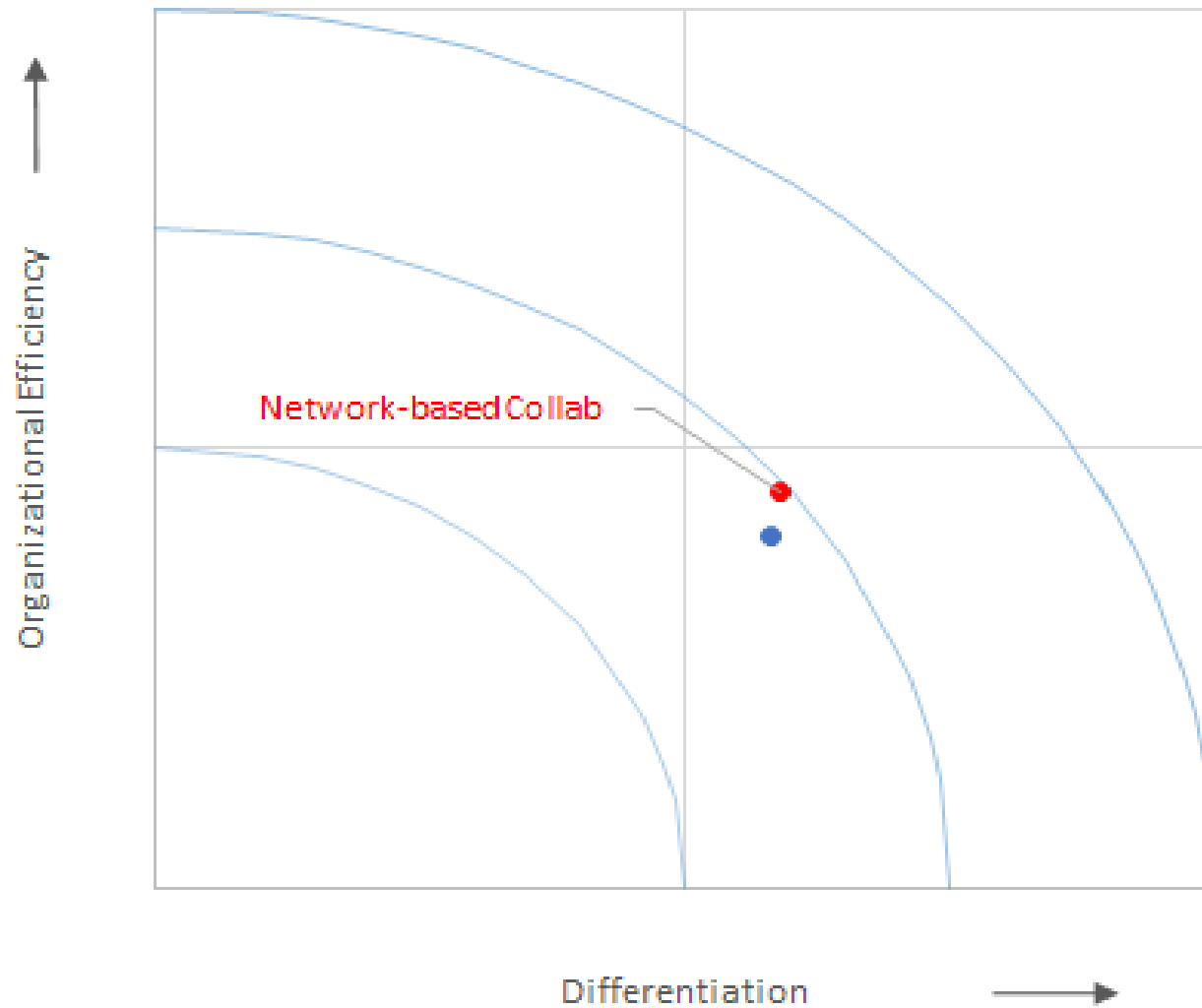


Collaboration Who Benefits?



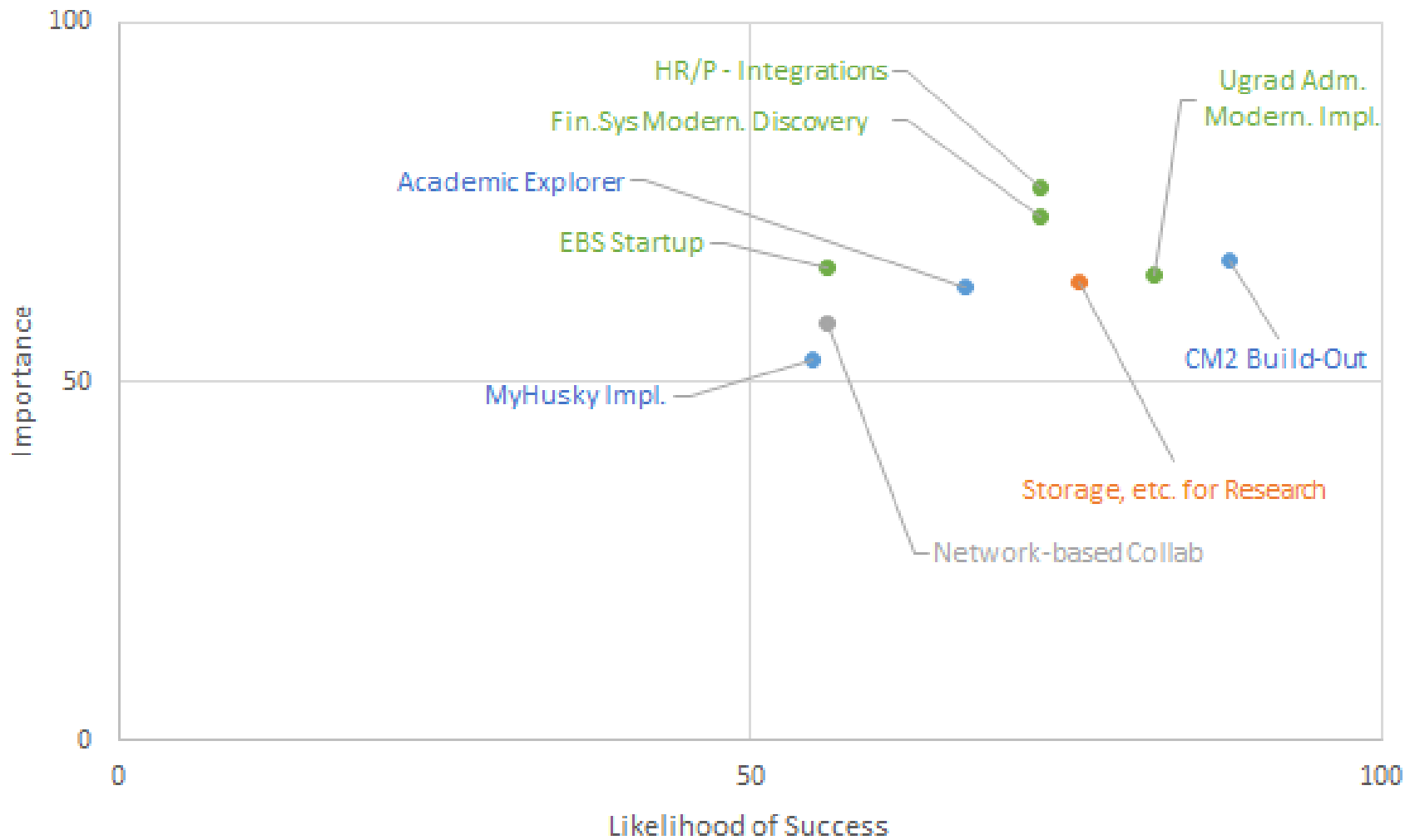
Collaboration

Impact - Visible or Hidden?



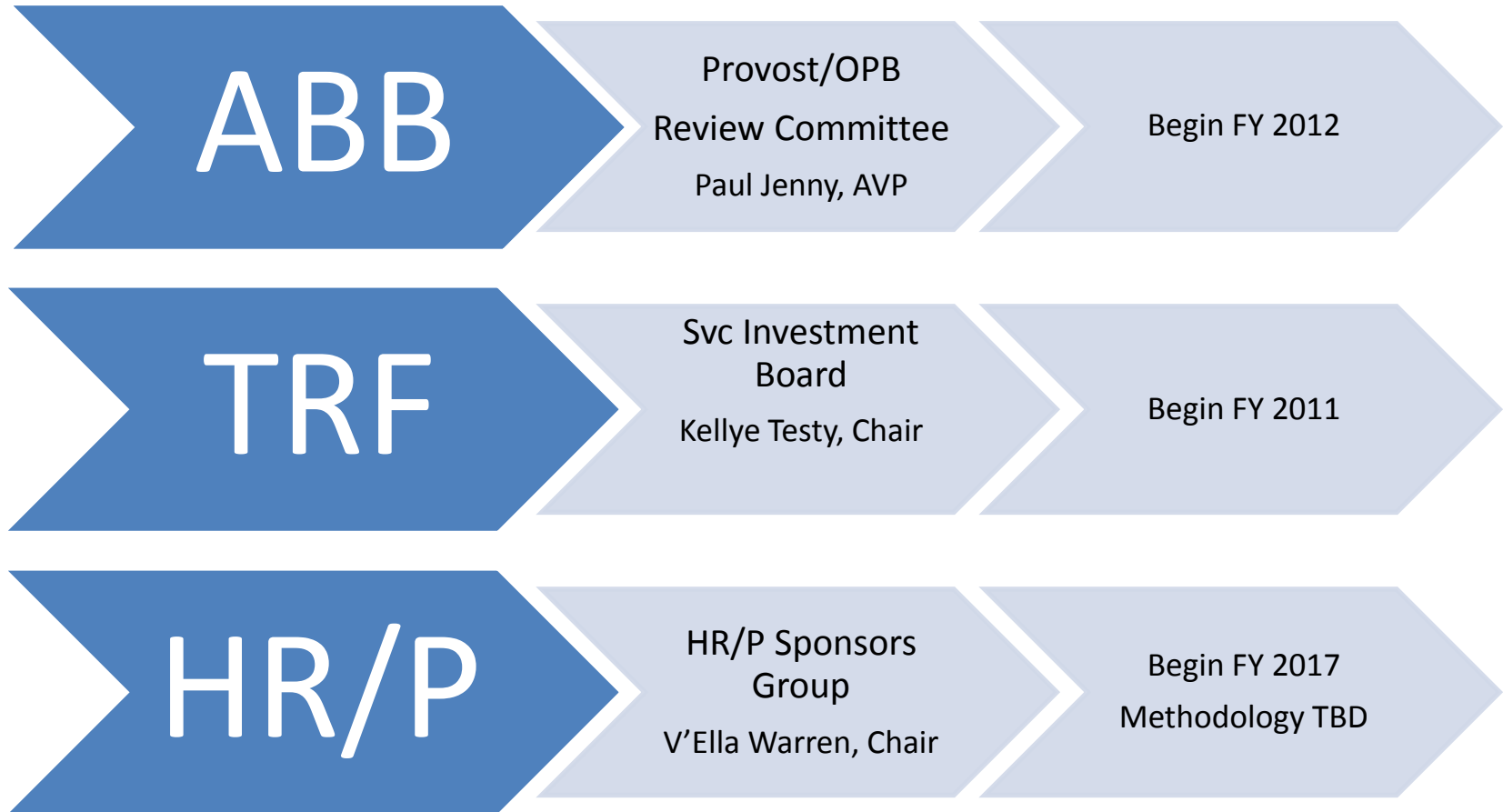
SIB Business Cases

Basic Metrics



TRF Update

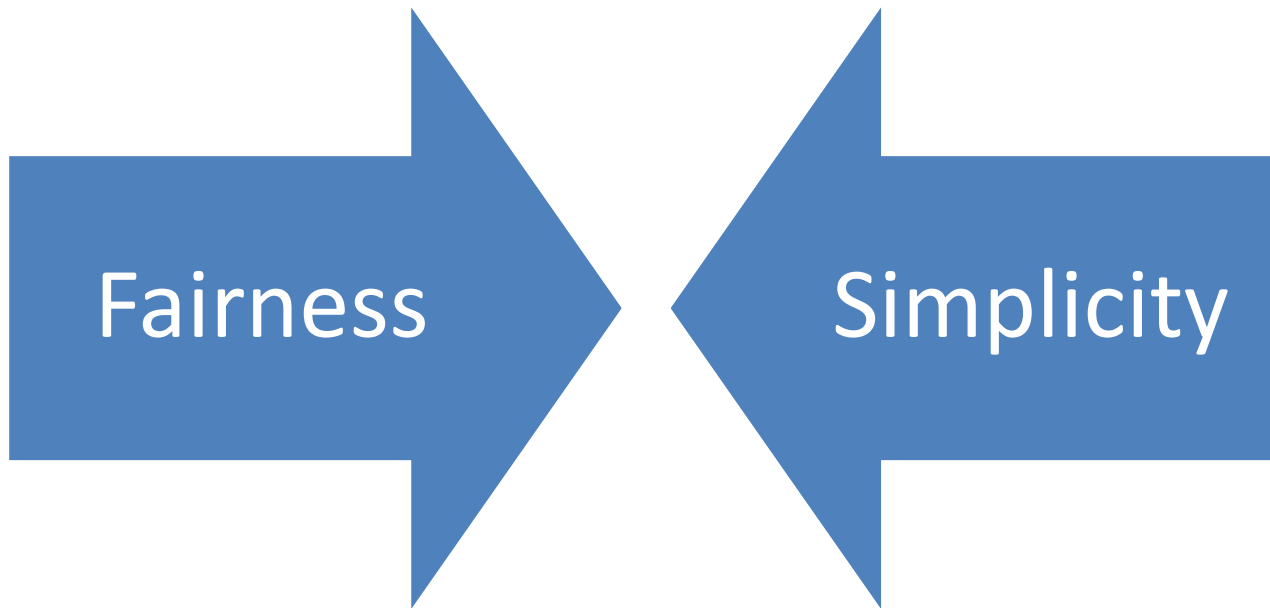
Parallel Processes



TRF Advisory Committee Timeline

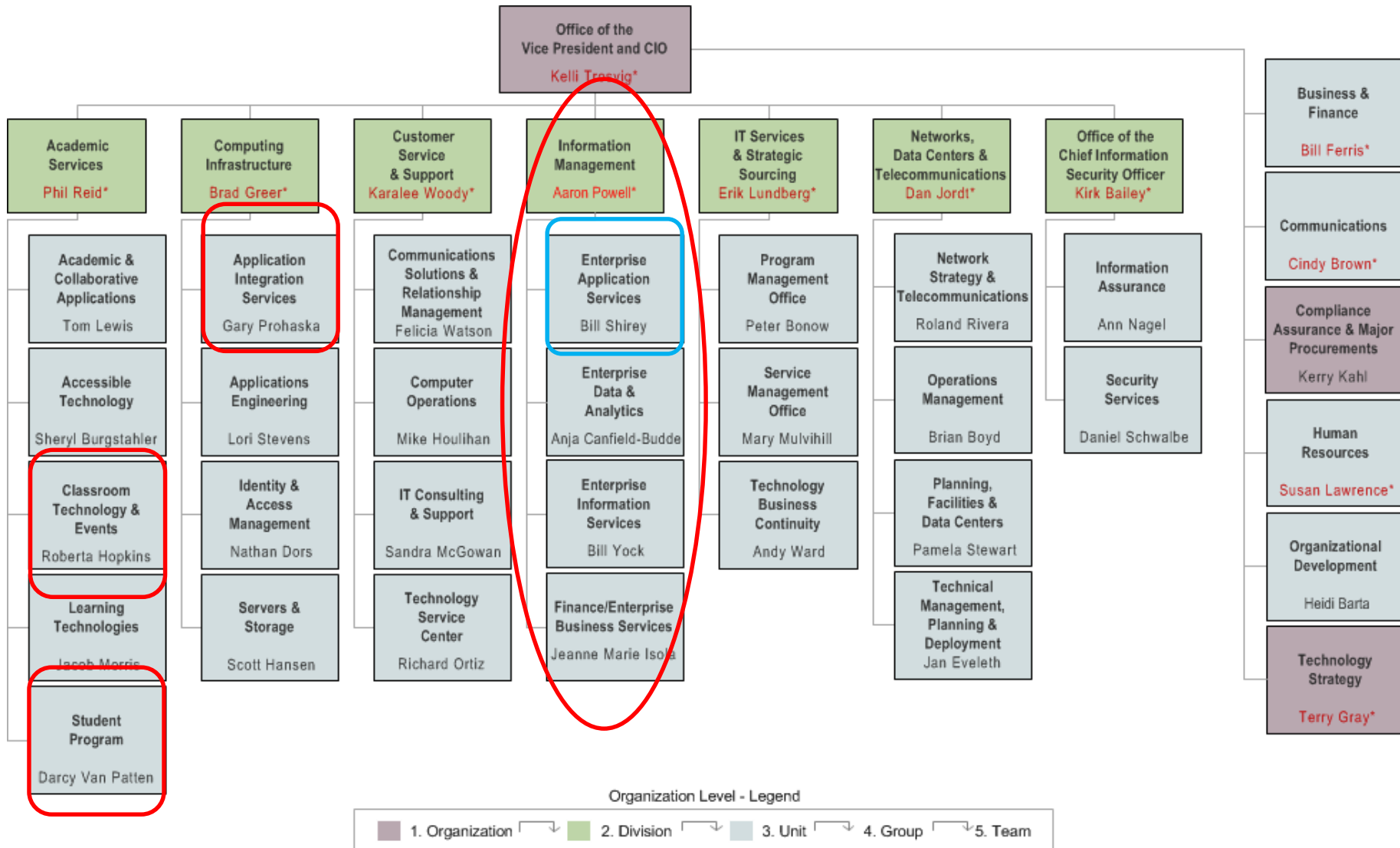
- Spring >> Review Principles
Discuss Methodology/Criteria
- Summer >> Develop Proposed UW-IT Budget
Update Services
Data Modeling for TRF
- Fall >> Discuss/Validate Outcomes
Review with Service Investment Board

Conflicting Principles



TRF Advisory Committee feels we are close to the right balance and current methodology is “equally unfair”.

Challenge: Alignment of TRF with current UW-IT Org



* Senior Leadership

TRF Advisory Committee

Outcomes – 4/7/14

- Focus on opportunities to reduce complexity and improve transparency
- Maintain current treatment of IT costs for students
- Explore alignment of TRF with current UW-IT organization and services
 - **Assess fiscal impact**
- Coordinate with HR/P Cost Allocation committee on per capita methodology

Questions & Discussion