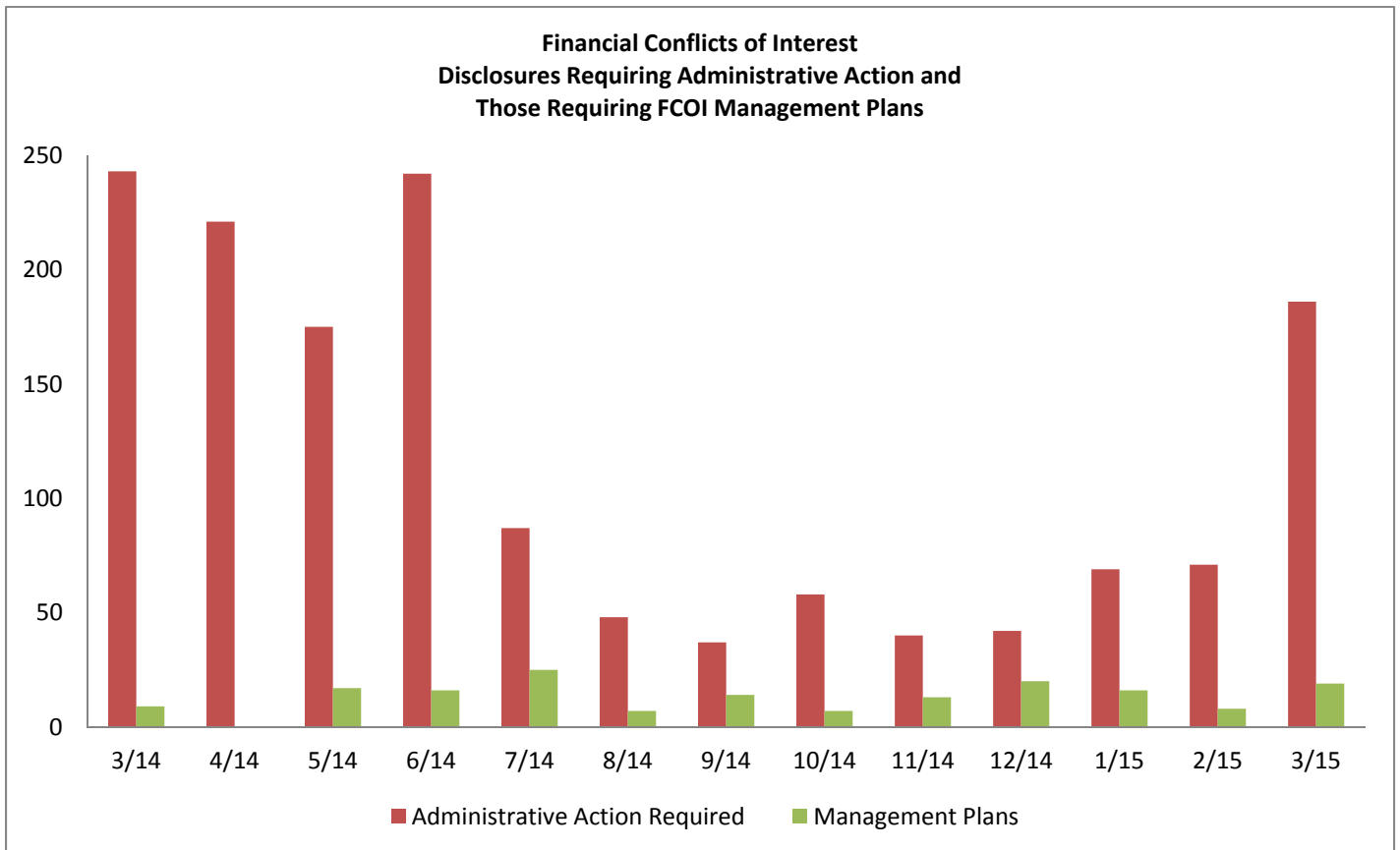
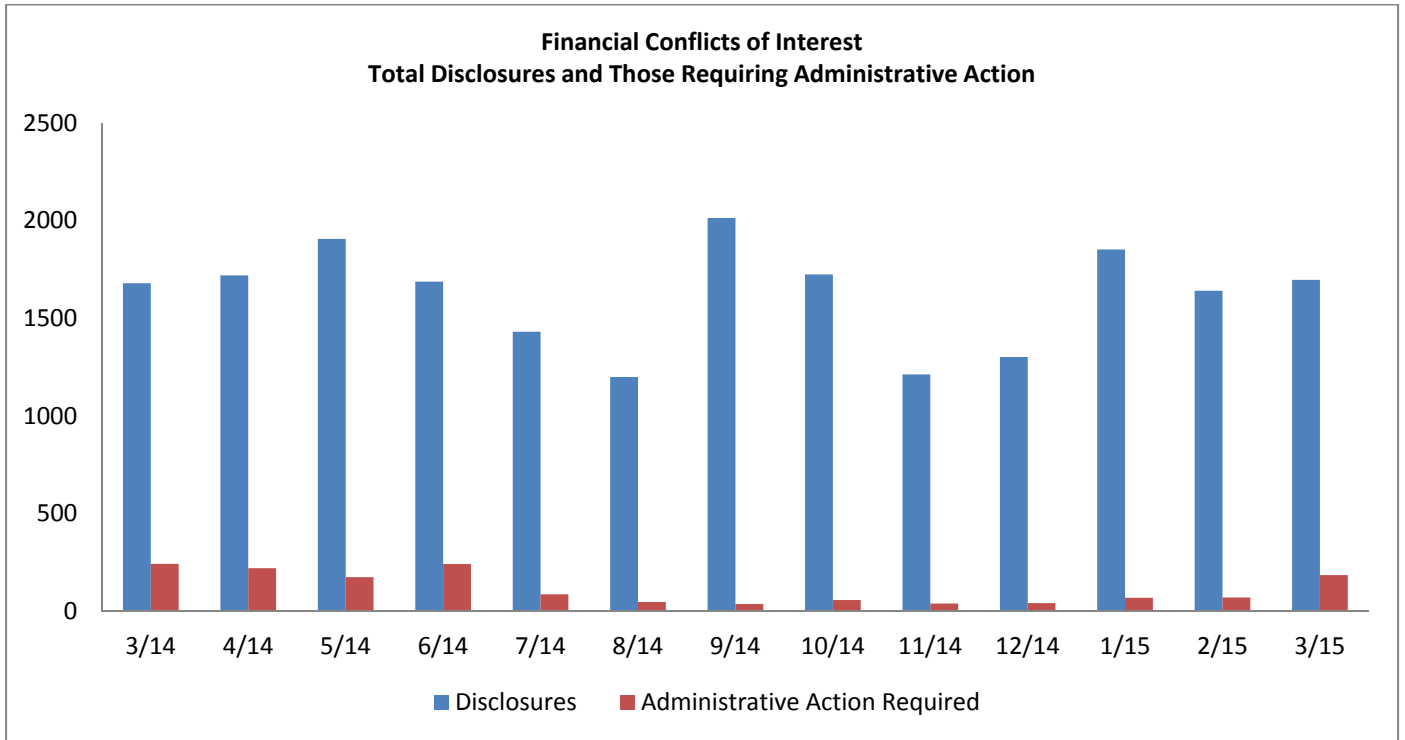
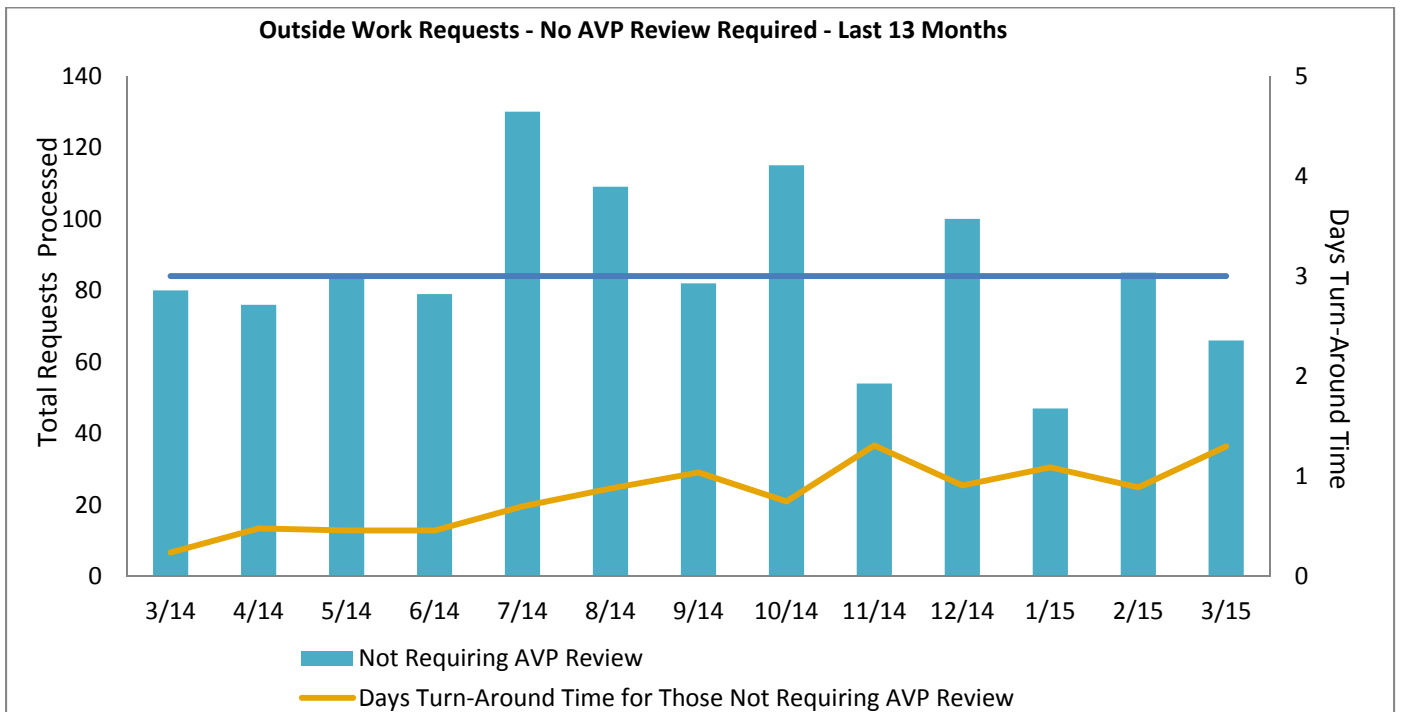
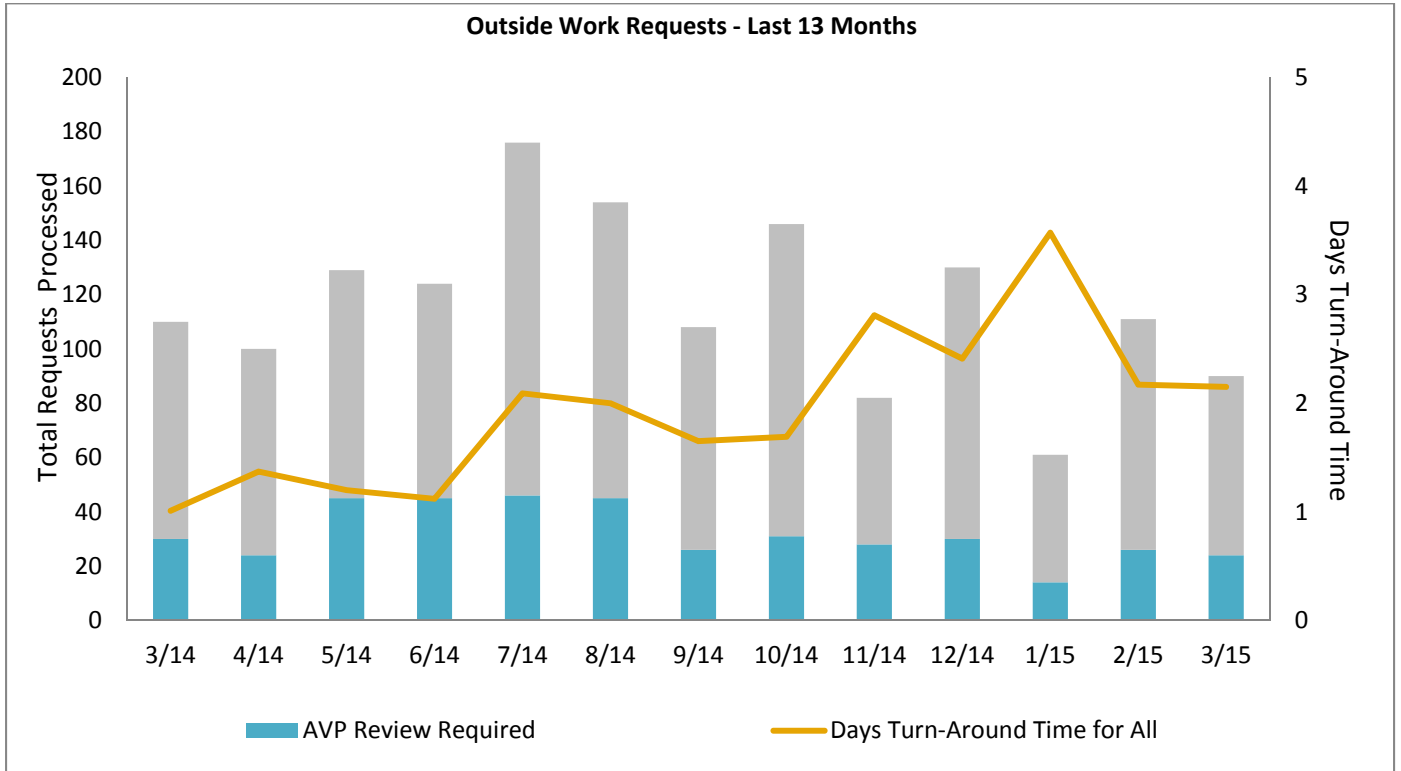


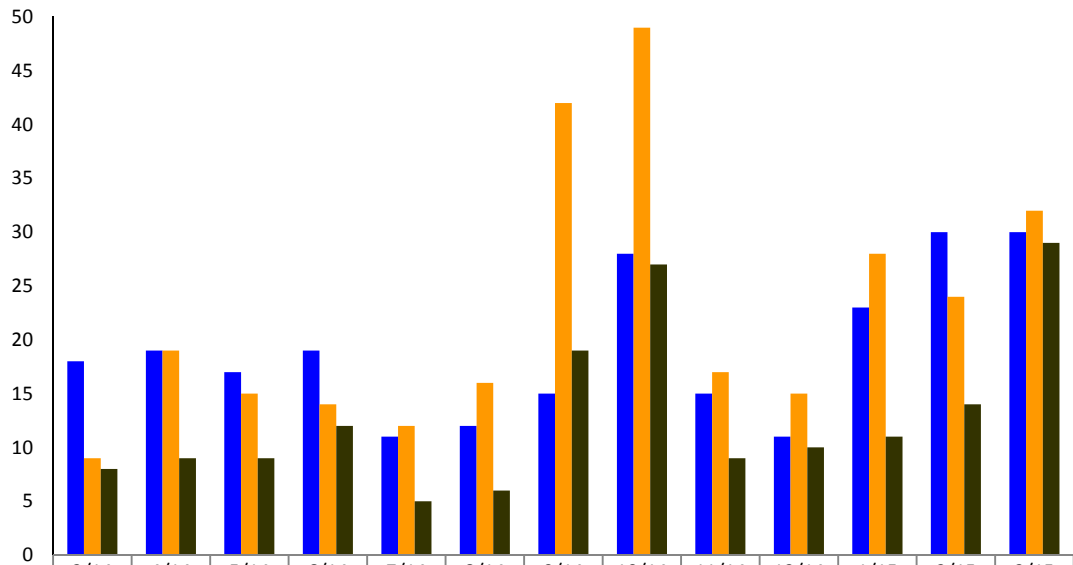


Operational Excellence



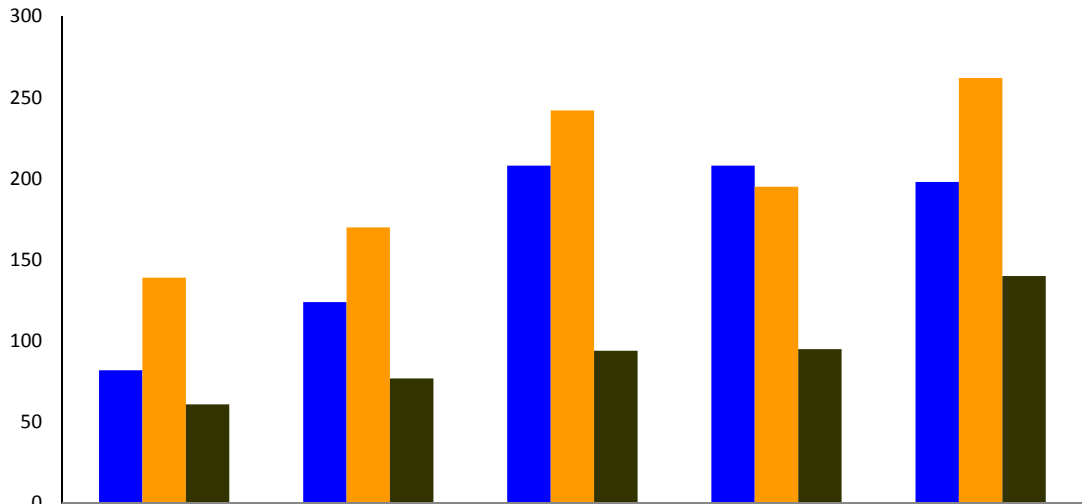


Limited Submissions - Last 13 Months



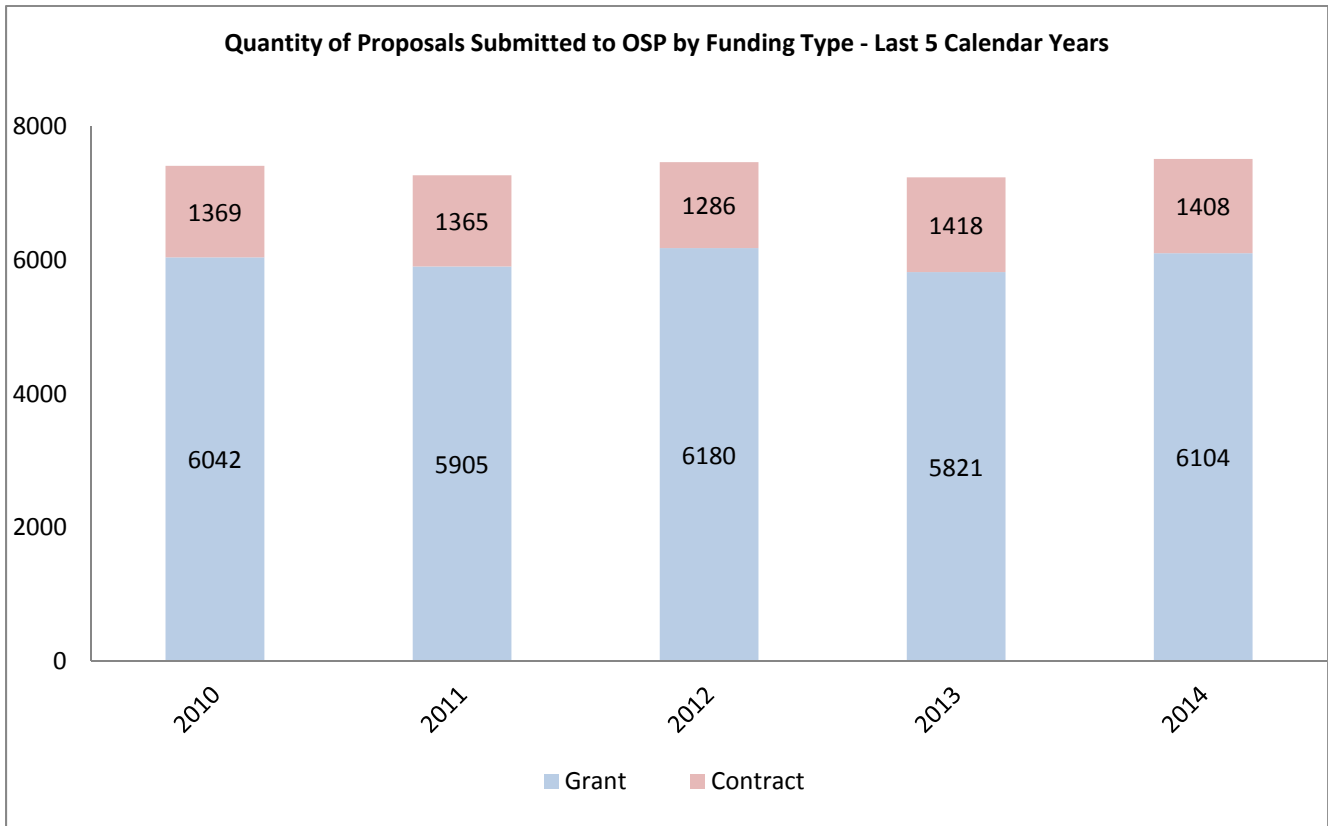
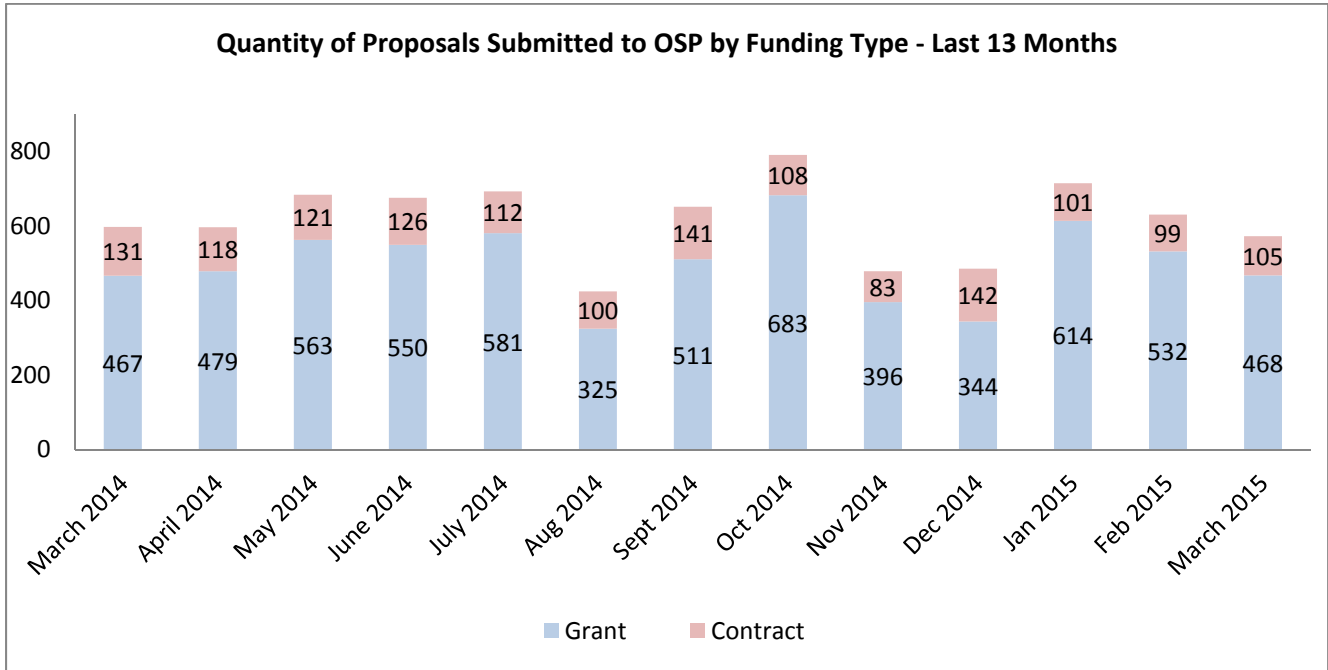
■ Limited Submission Opportunities	18	19	17	19	11	12	15	28	15	11	23	30	30
■ Pre-proposals Submitted	9	19	15	14	12	16	42	49	17	15	28	24	32
■ Pre-proposals Selected	8	9	9	12	5	6	19	27	9	10	11	14	29

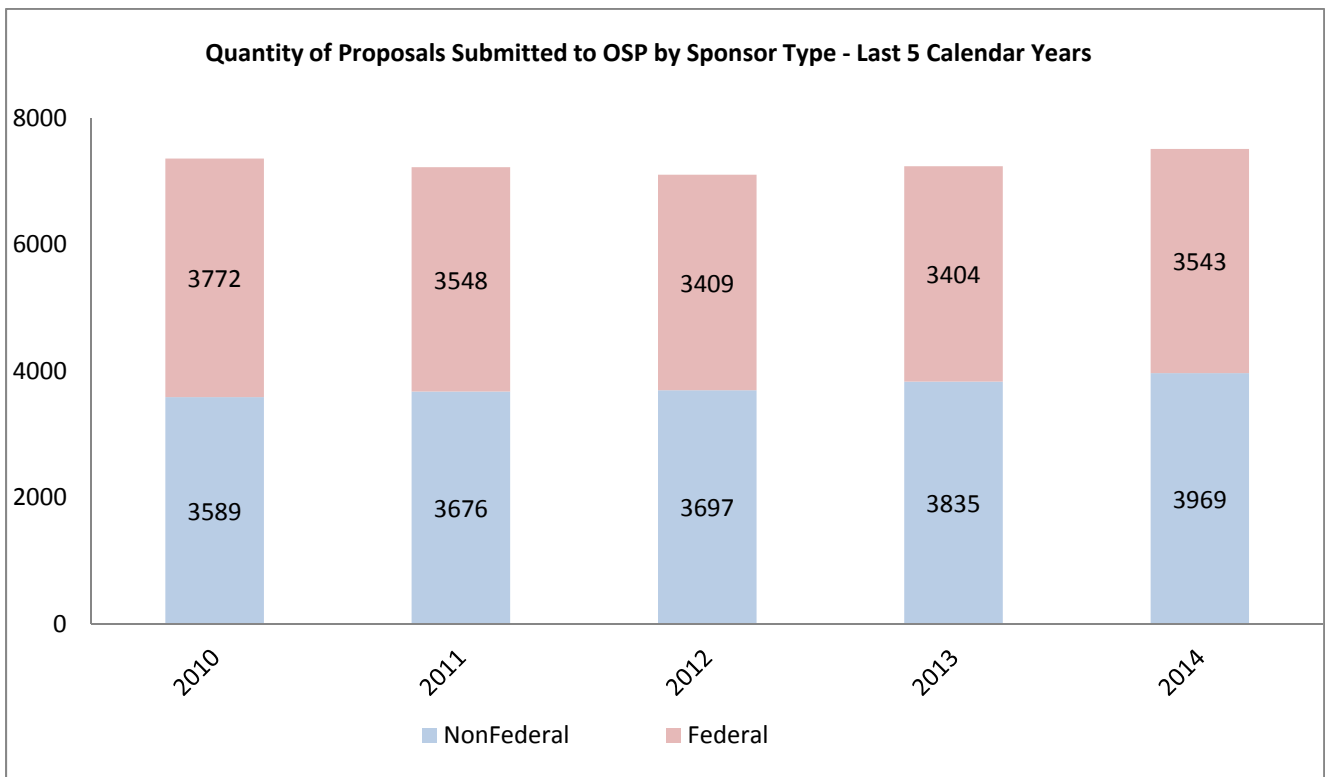
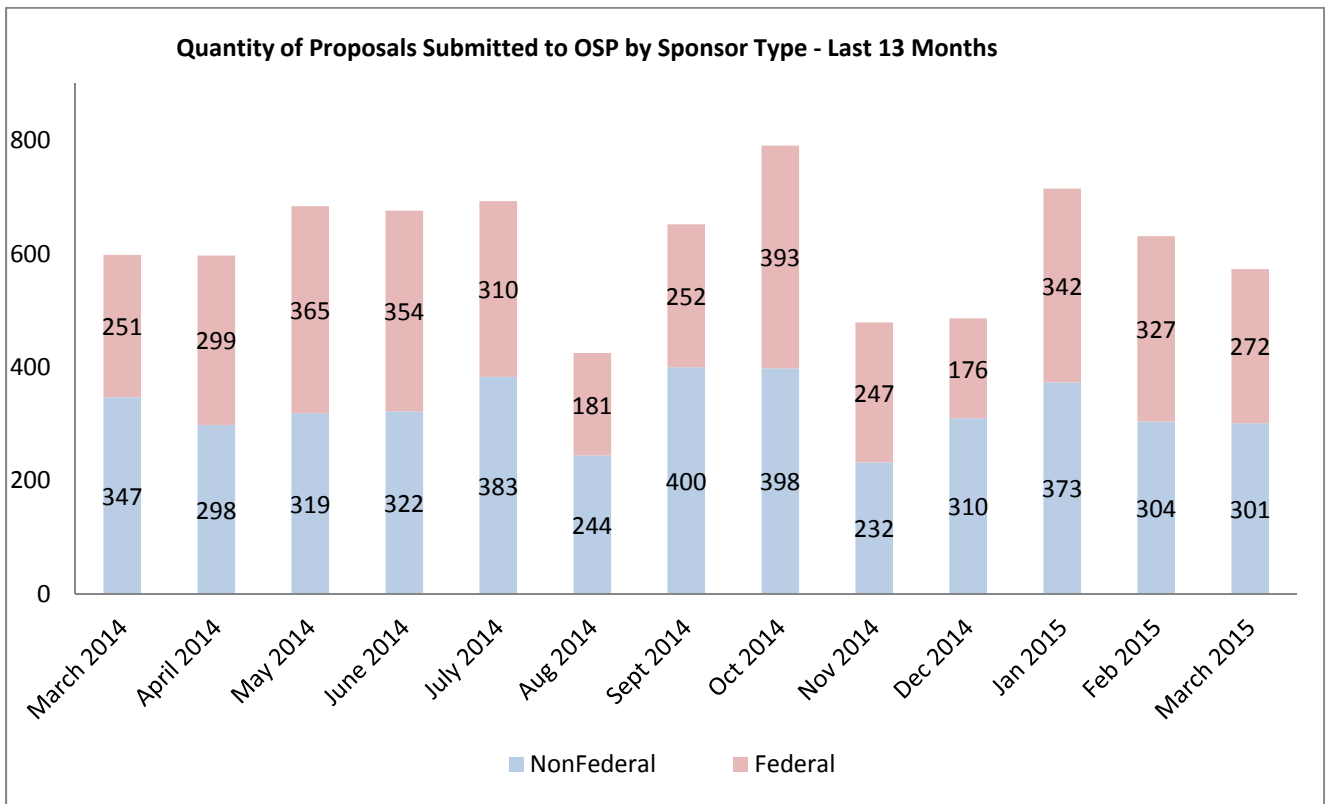
Limited Submissions - Last 5 Calendar Years

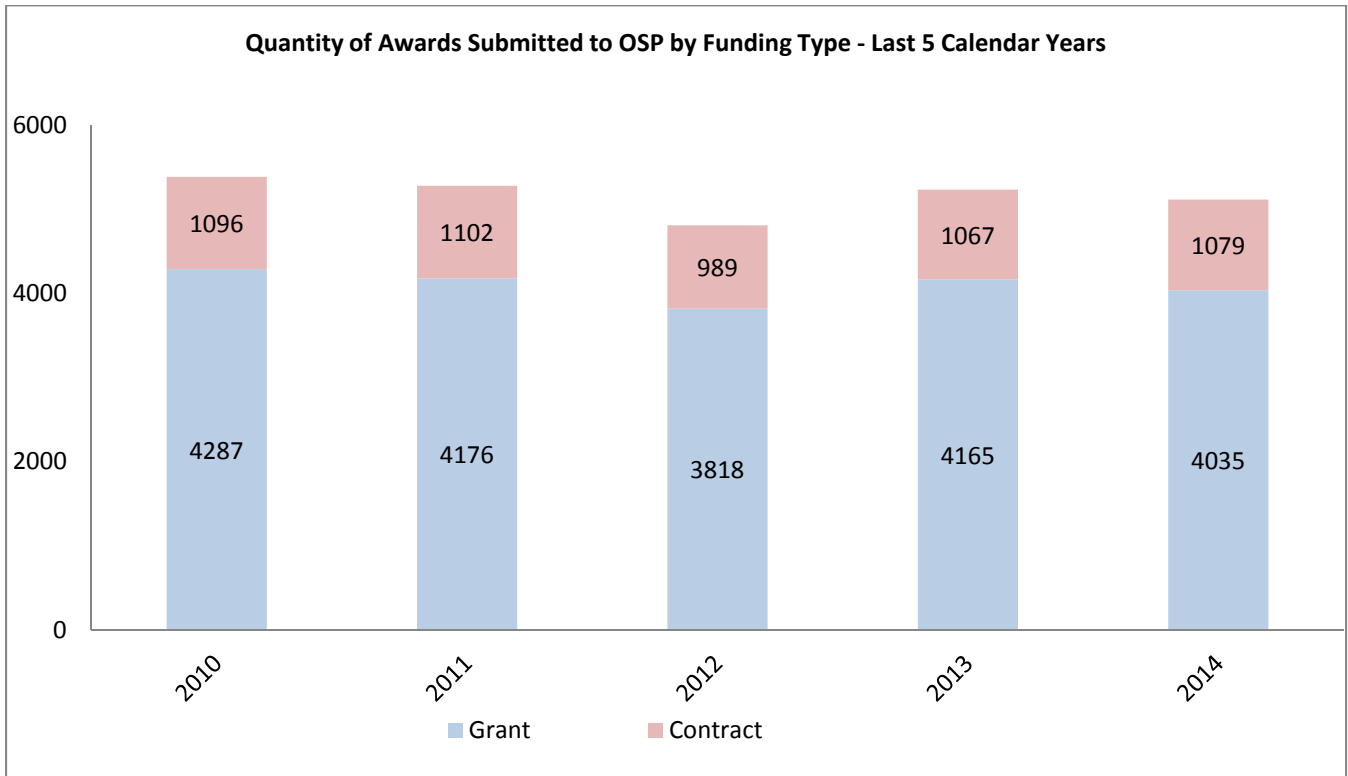
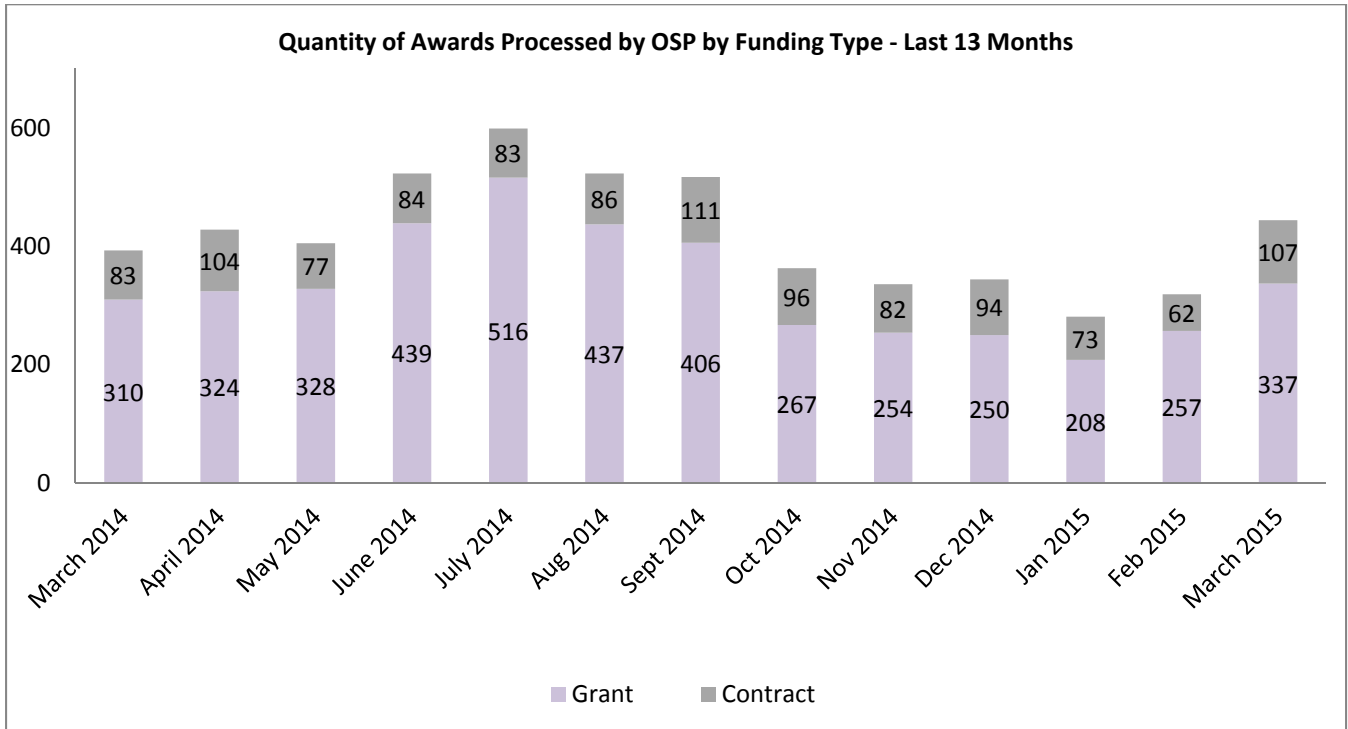


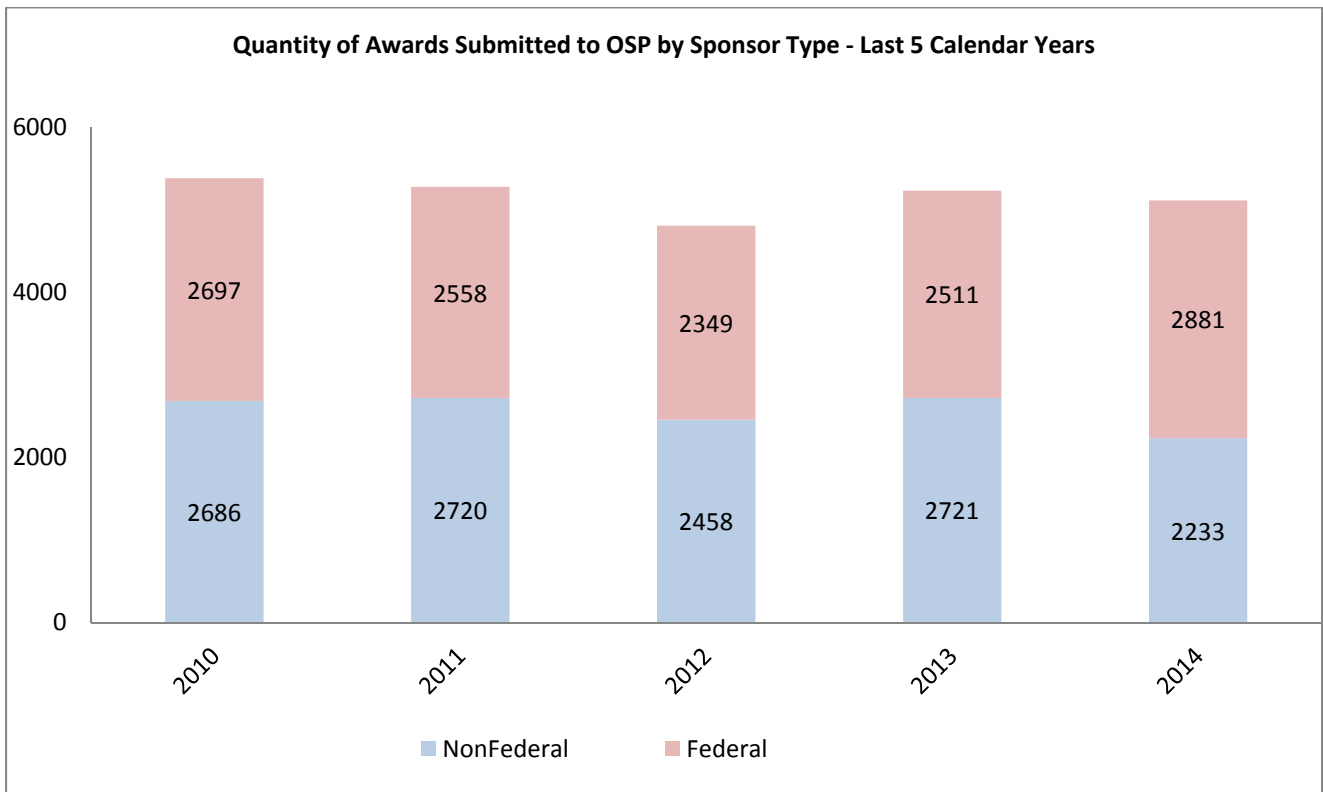
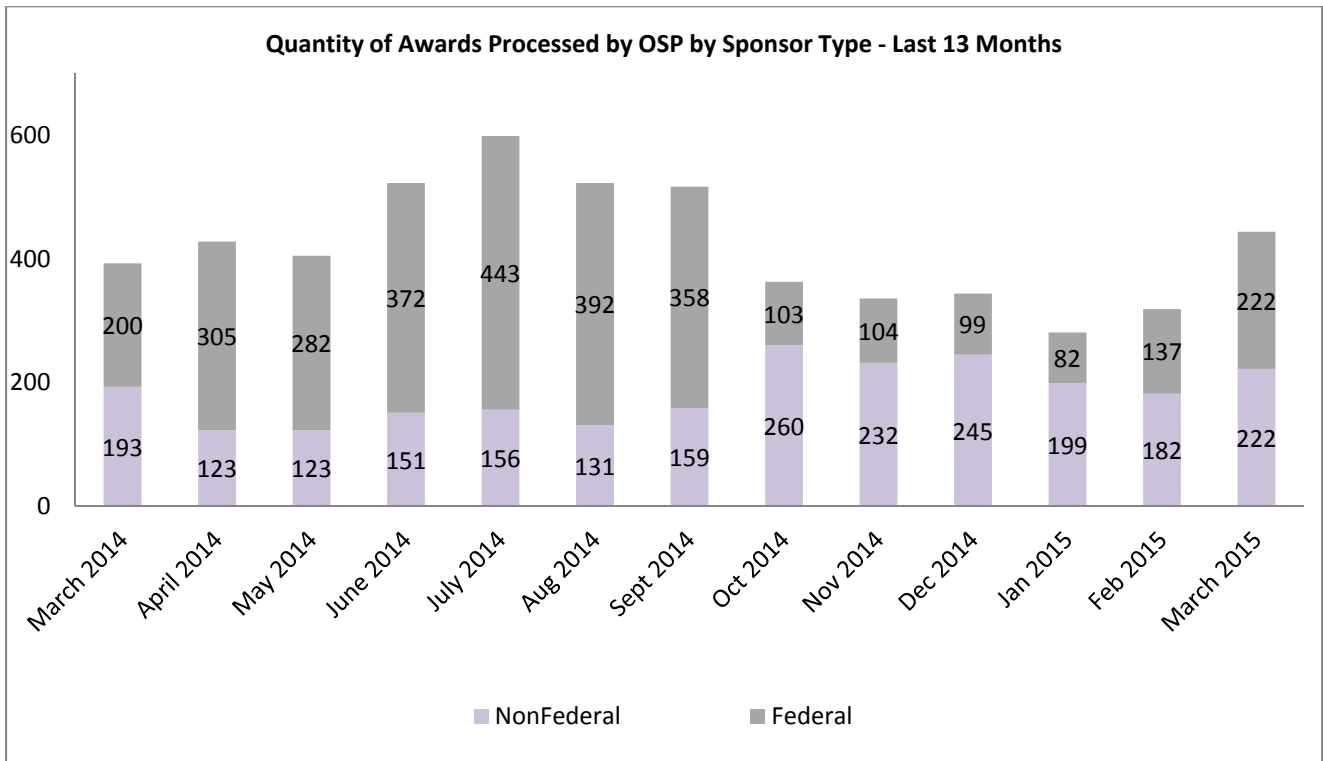
■ Limited Submission Opportunities	82	124	208	208	198
■ Pre-proposals Submitted	139	170	242	195	262
■ Pre-proposals Selected	61	77	94	95	140

■ Limited Submission Opportunities ■ Pre-proposals Submitted ■ Pre-proposals Selected

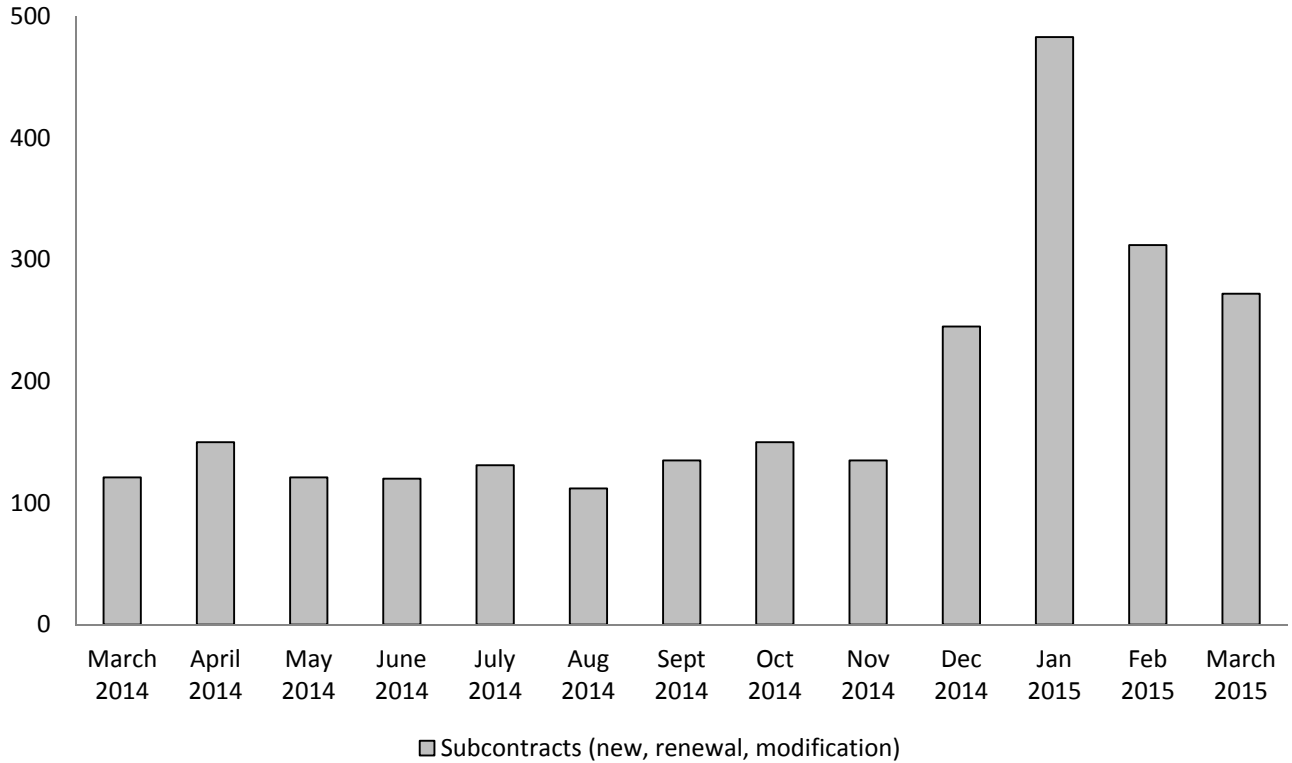








OSP Subcontracts Volume - Last 13 Months



Number of Administrative Actions (Pre & Post Award) Created

