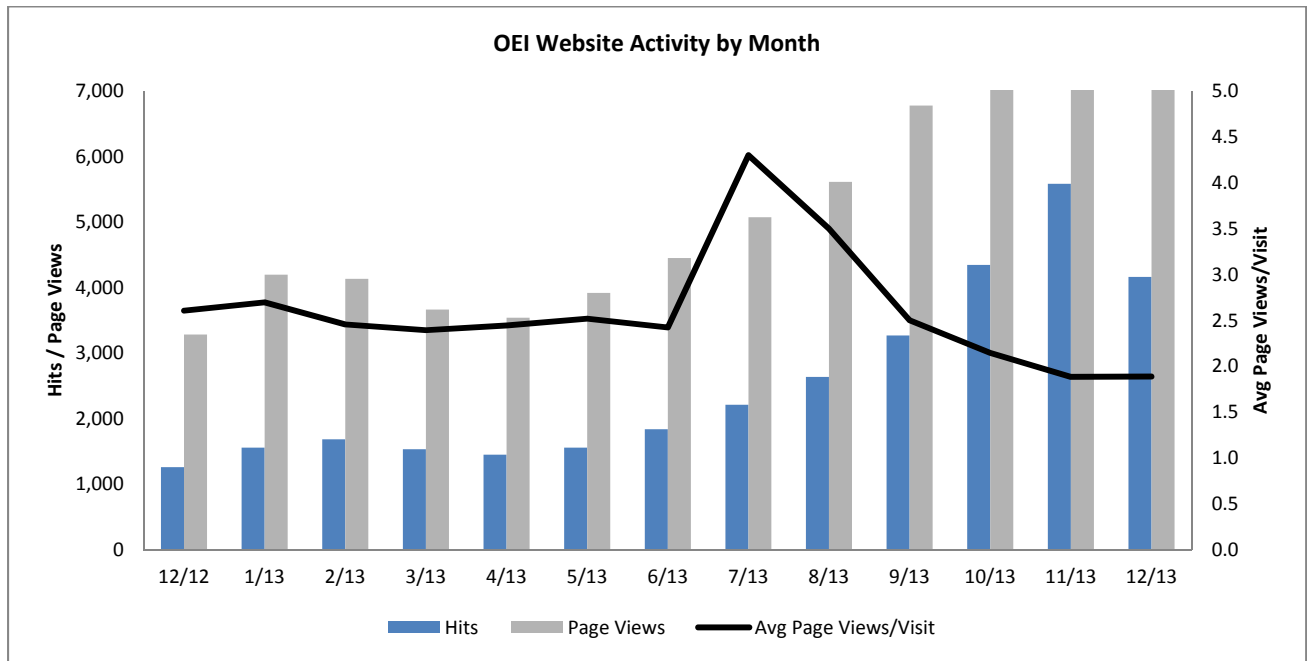
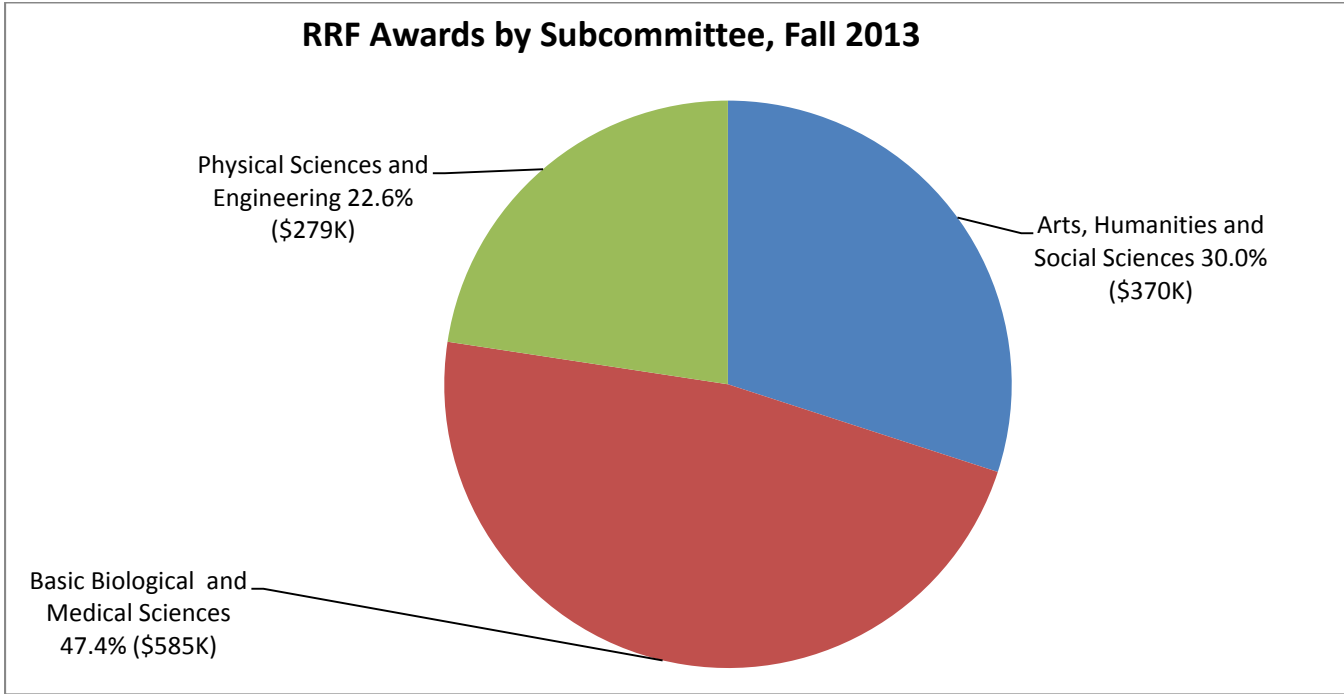




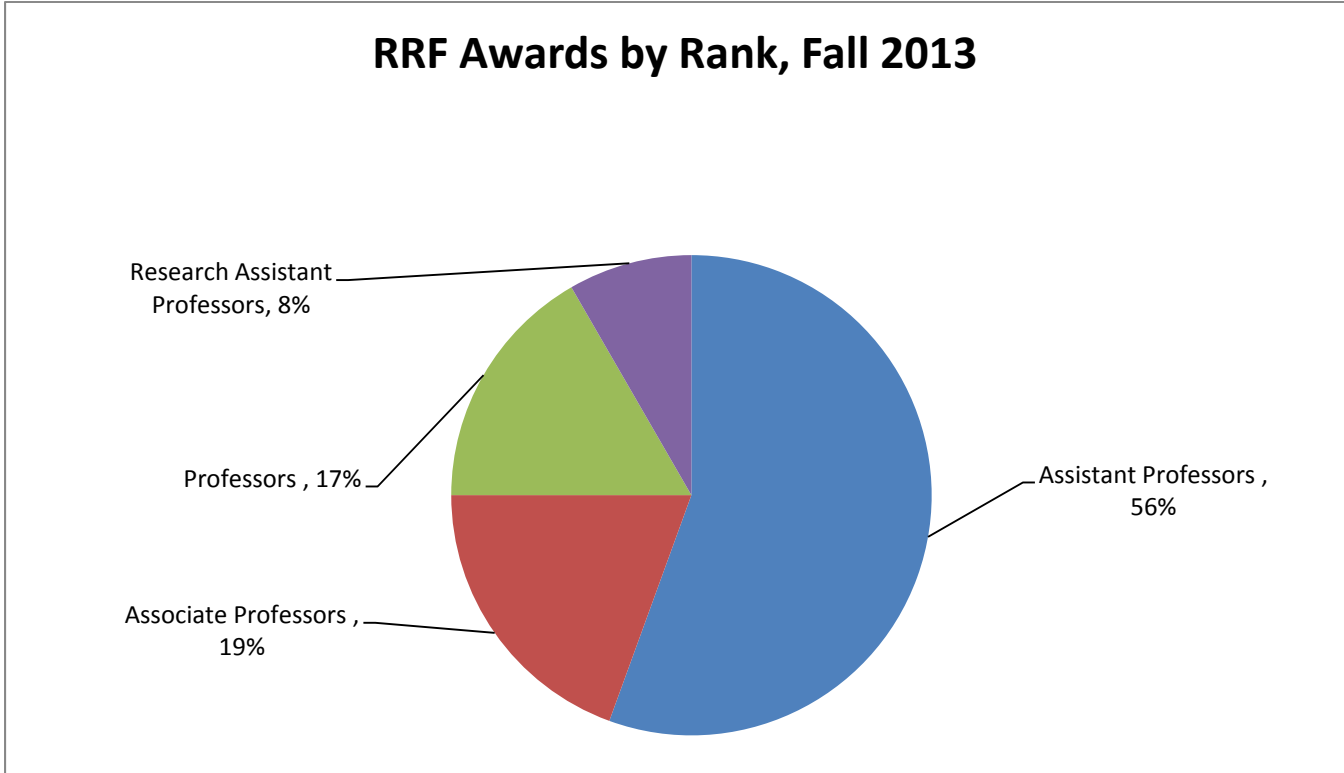
Customer Service



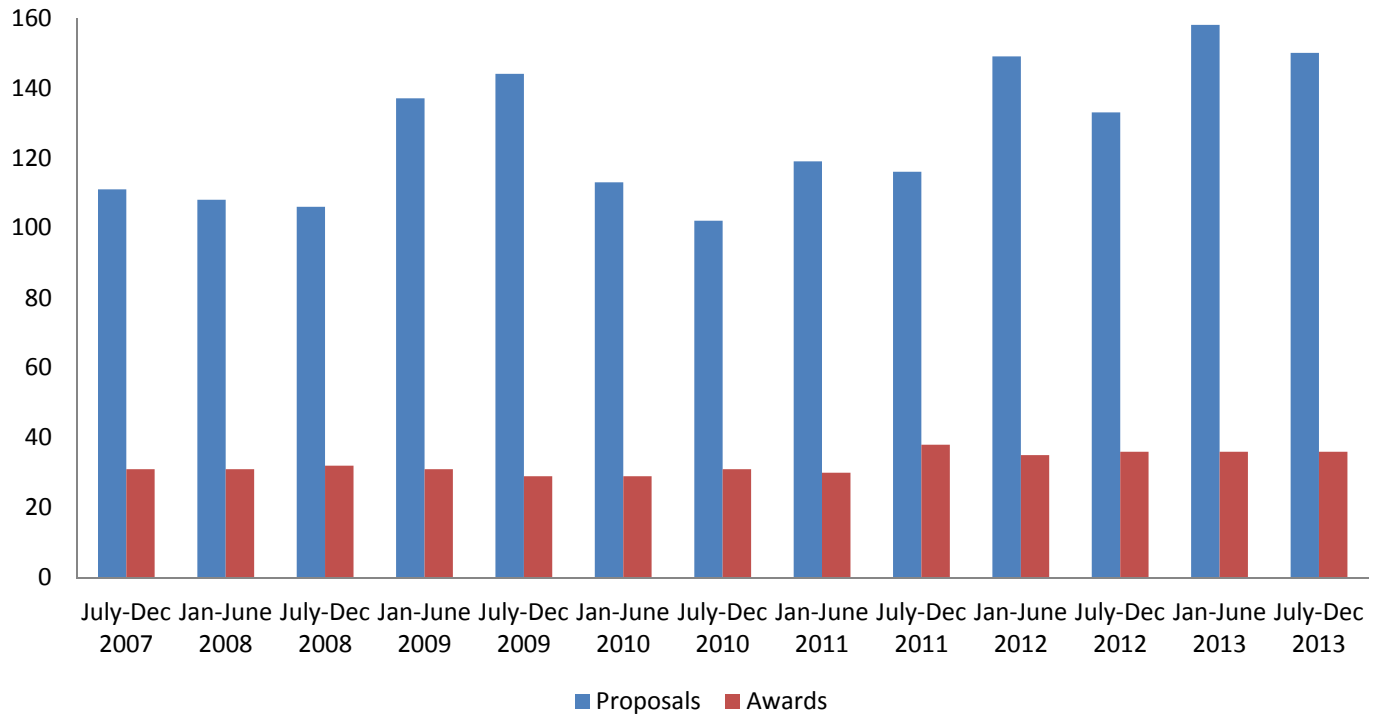
RRF Awards by Subcommittee, Fall 2013



RRF Awards by Rank, Fall 2013



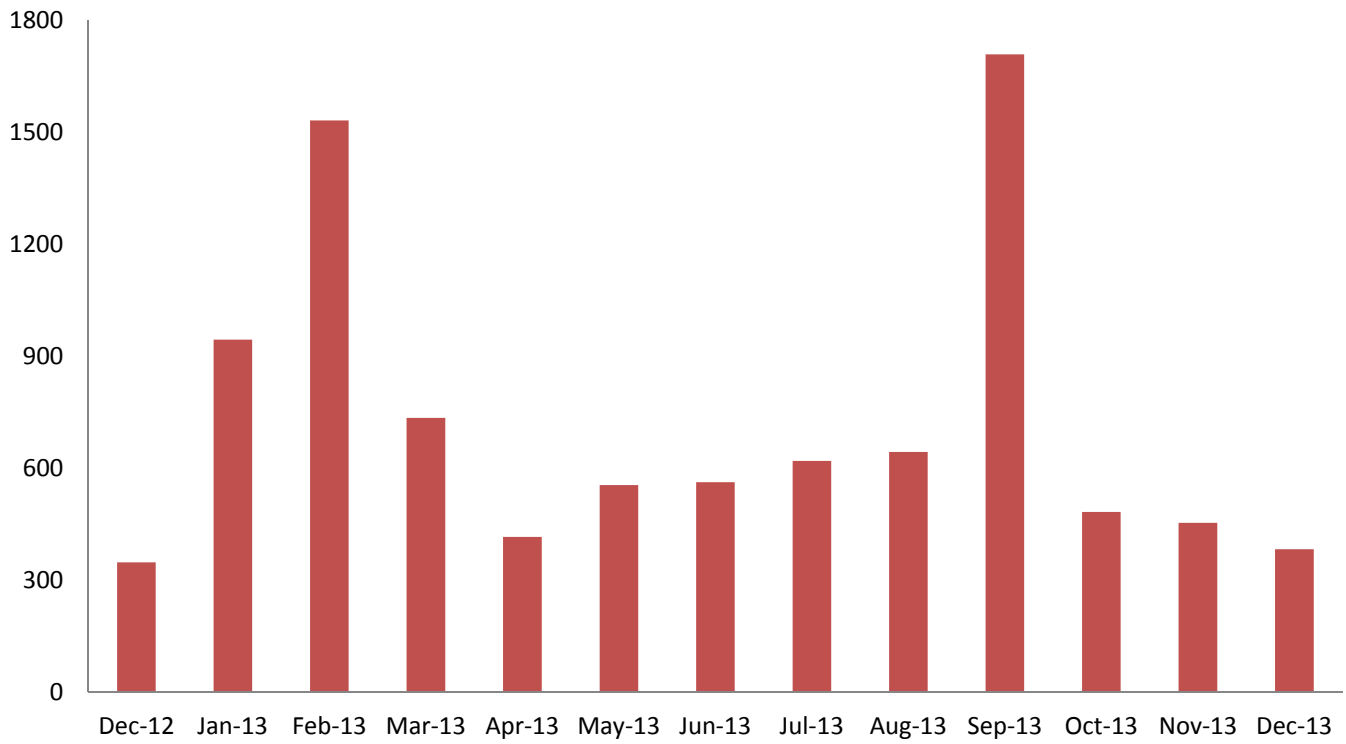
RRF Proposals and Awards 2007-2013



Royalty Research Fund Budget Setups and Final Reports



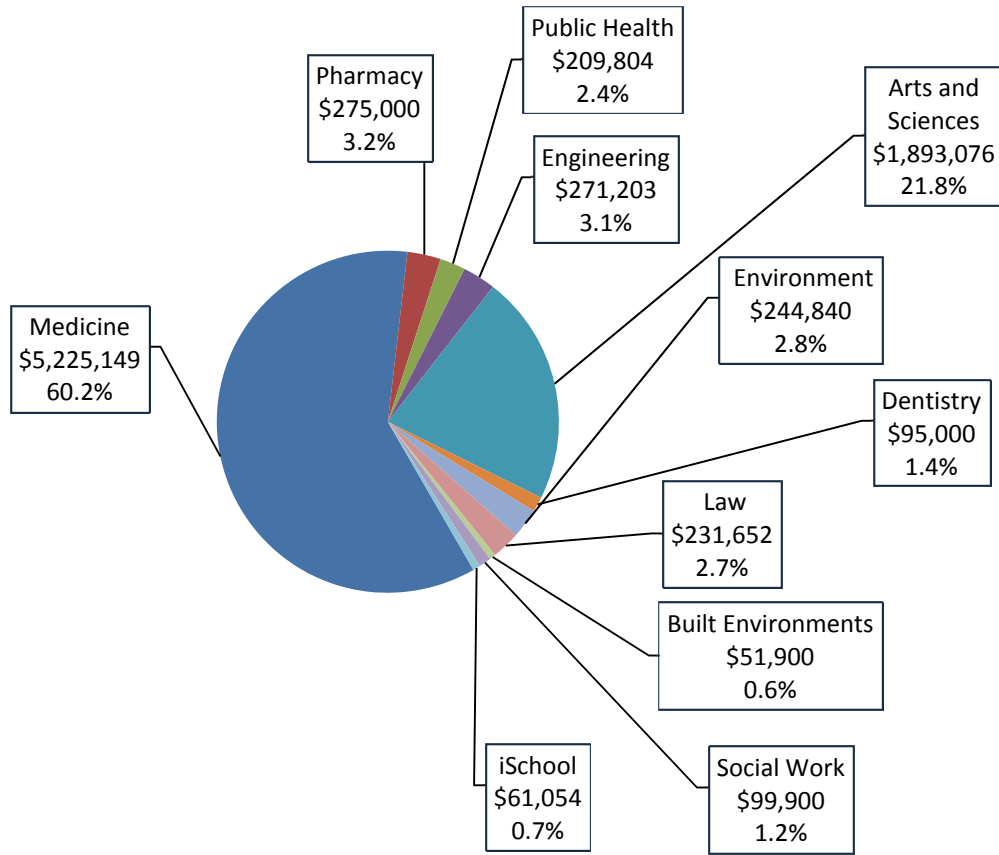
Royalty Research Fund Web Page Hits - Past 13 Months



Office of Research Central: Bridge Funding

Provost Bridge Awards External Funding Received by School and College/Direct and Indirect Cost December 2006 - December 2012 (3/10/14)																
School/College Bridge Award Awardees	Bridge Distri- bution Provost/ School and College	December 2006	May 2007	December 2007	May 2008	December 2008	May 2009	December 2009	May 2010	December 2010	May 2011	December 2011	May 2012	Decemb er 2012	TOTAL	Return on Investm ent
Arts and Sciences	2,218,458	0	4,807,811	2,664,541	953,558	3,502,354	1,867,243	5,533,237	2,842,486	1,345,162	2,065,000	0	908,000	2,271,055	28,760,447	13
Built Environm ents	51,900	0	0	0	0	0	0	0	0	0	0	0	0	0	0	0
Dentistry	190,000	0	0	0	1,716,000	0	0	0	0	0	0	0	0	0	1,716,000	9
Engineeri ng	425,240	250,000	1,600,800	0	0	947,086	0	177,500	0	0	0	0	0	803,168	3,778,554	7
Environm ent	484,356	0	0	581,587	0	5,175,481	20,000	0	0	66,000	0	115,000	0	0	5,958,068	12.3
Law	363,304	0	0	0	0	0	0	0	0	90,000	0	0	20,000	0	110,000	0.3
Medicine	8,273,011	7,181,516	3,815,799	2,572,976	3,476,070	4,921,236	1,065,864	4,130,847	1,721,358	7,556,048	997,459	7,316,200	3,695,251	2,690,365	51,140,989	5.9
Pharmacy	501,717	1,363,553	0	0	3,044,386	0	0	0	0	0	0	0	0	0	4,407,939	8.8
Public Health	365,003	1,613,230	12,500	1,756,480	0	0	0	0	0	0	496,053	0	0	0	3,878,263	10.6
iSCHOOL	24,500	0	0	0	0	0	0	0	0	0	0	0	779,973	0	779,973	31.8
Social Work	199,800	0	0	0	0	0	0	0	0	0	0	766,402	2,397,693	0	3,164,095	15.8
TOTAL	13,097,289	10,408,299	10,236,910	7,575,584	9,190,014	14,546,157	2,953,107	9,841,584	4,563,844	9,057,210	3,558,512	8,197,602	7,800,917	5,764,588	103,694,328	

Provost Bridge Awards by School and College 12/06-12/13



**Provost Bridge Awards by School and College
December 2006 - December 2013**

Bridge Awards by Cycle MO/YR	Medicine	Pharmacy	Public Health	Engineering	Arts and Sciences	Dentistry	Environ- ment	Law	Built Environ- ments	Social Work	iSchool	Total
December, 2006	367,000	85,000	48,000	50,000	0	0	0	0	0	0	0	550,000
May, 2007	211,000	0	50,000	40,000	174,000	0	0	0	0	0	0	475,000
December, 2007	356,548	0	61,804	0	118,562	45,000	0	0	0	0	0	581,914
May, 2008	390,000	97,000	0	30,000	49,000	50,000	0	0	0	0	0	616,000
December, 2008	347,000	0	0	50,000	256,000	0	0	0	0	0	0	653,000
May, 2009	272,000	43,000	0	0	90,000	0	50,000	0	0	0	0	455,000
December, 2009	314,312	0	0	49,191	96,134	0	0	0	0	0	0	459,637
May, 2010	249,394	0	0	0	92,530	0	25,000	0	0	0	0	366,924
December, 2010	248,924	0	0	0	243,627	0	30,000	50,000	25,950	0	0	598,501
May, 2011	248,924	0	0	0	193,627	0	30,000	50,000	25,950	0	0	548,501
December, 2011	528,748	0	0	0	0	0	37,885	32,934	0	49,900	0	649,467
May, 2012	350,000	50,000	0	0	99,373	0	35,455	48,718	0	50,000	12,250	645,796
December, 2012	391,957	0	0	52,012	204,151	0	0	50,000	0	0	48,804	746,924
May, 2013	350,000	0	0	0	49,965	26,168	0	0	0	0	0	426,133
December, 2013	599,342	0	50,000	0	226,107		36,500	0	0	0	0	911,949
Total	\$5,225,149	\$275,000	\$209,804	\$271,203	\$1,893,076	\$121,168	\$244,840	\$231,652	\$51,900	\$99,900	\$61,054	\$8,684,745
% of Total	60.2%	3.2%	2.4%	3.1%	21.8%	1.4%	2.8%	2.7%	0.6%	1.2%	0.7%	99.3%

**Success of Bridge Funding Program
December 2006 - December 2012**

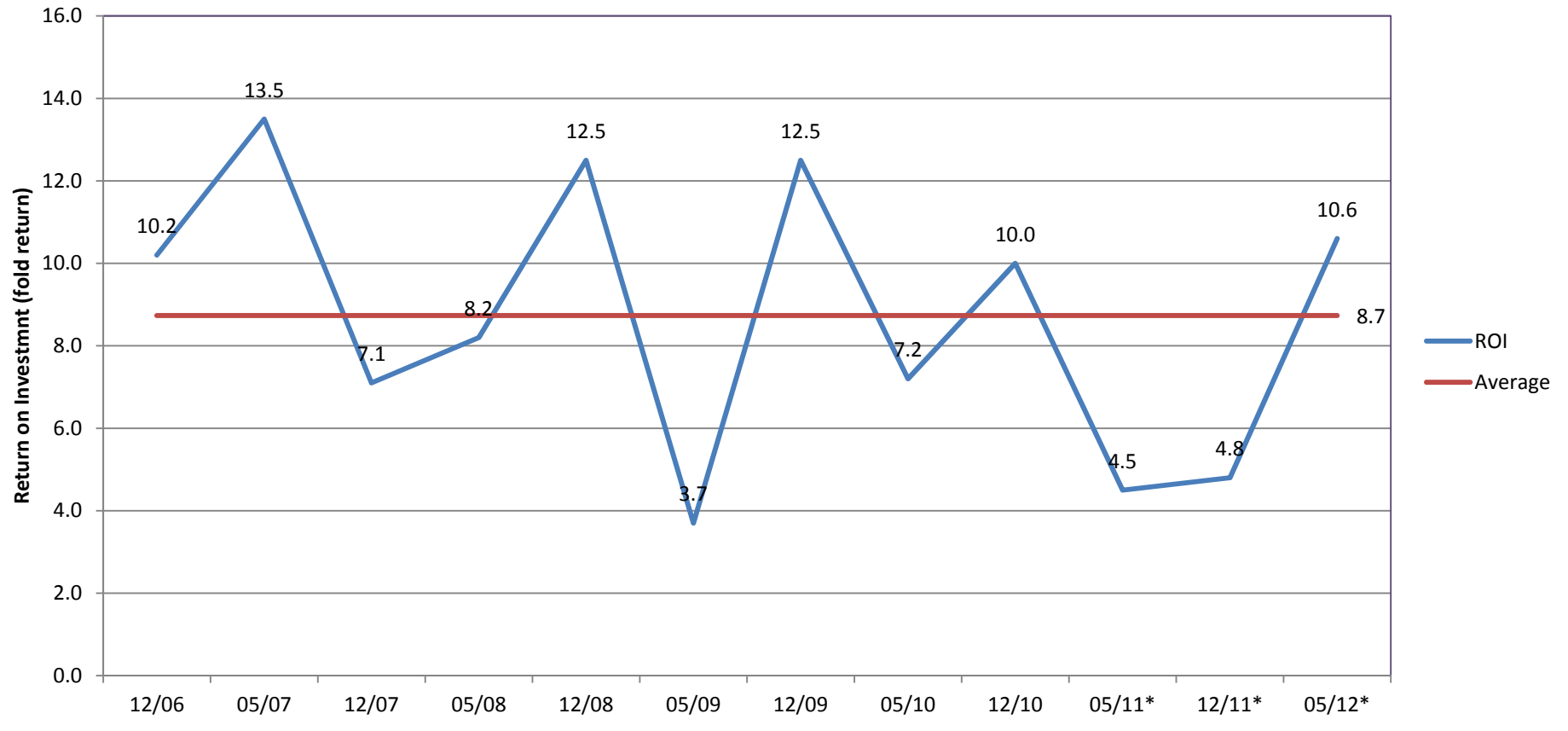
Submission Date	Distribution Provost ¹	Distribution Matching ¹	Total Provost and Matching	Number of Bridge Awards	Awardees Receiving External Funding within 1.5 yrs of award	% Receiving Funding	External Grants Obtained (direct and indirect costs)	Return on Investment (fold return)
12/06 ¹	\$482,091	\$549,041	\$1,031,132	13	10	77%	\$10,408,299	10.1
05/07 ¹	\$398,051	\$475,080	\$873,131	13	12	92%	\$10,236,910	11.7
12/07 ¹	\$504,178	\$581,914	\$1,086,092	15	8	53%	\$7,575,584	7.0
05/08 ¹	\$523,470	\$615,647	\$1,139,116	12	6	50%	\$9,190,014	8.1
12/08 ¹	\$577,005	\$653,260	\$1,230,265	15	9	60%	\$14,546,157	11.8
05/09 ¹	\$400,690	\$455,168	\$855,858	10	6	60%	\$2,953,107	3.5
12/09 ¹	\$393,241	\$459,638	\$852,879	12	10	83%	\$9,841,584	11.5
05/10 ^{1,2}	\$294,622	\$374,394	\$669,016	7	4	57%	\$4,563,844	6.8
12/10	\$548,501	\$548,501	\$1,097,002	13	8	62%	\$9,057,210	8.3
05/11 ^{1,2}	\$391,592	\$424,314	\$815,906	9	5	56%	\$3,558,512	4.4
12/11 ^{1,2}	\$596,197	\$599,467	\$1,195,664	13	10	77%	\$8,197,602	6.9
05/12 ²	\$552,797	\$552,797	\$1,105,594	13	8	62%	\$7,800,917	7.1
12/12 ^{1,2}	\$535,369	\$610,267	\$1,145,636	15	9	60%	5,764,588	5
Total	\$6,197,803	\$6,899,487	\$13,097,290	160	105	65.3%³	\$103,694,328	7.9

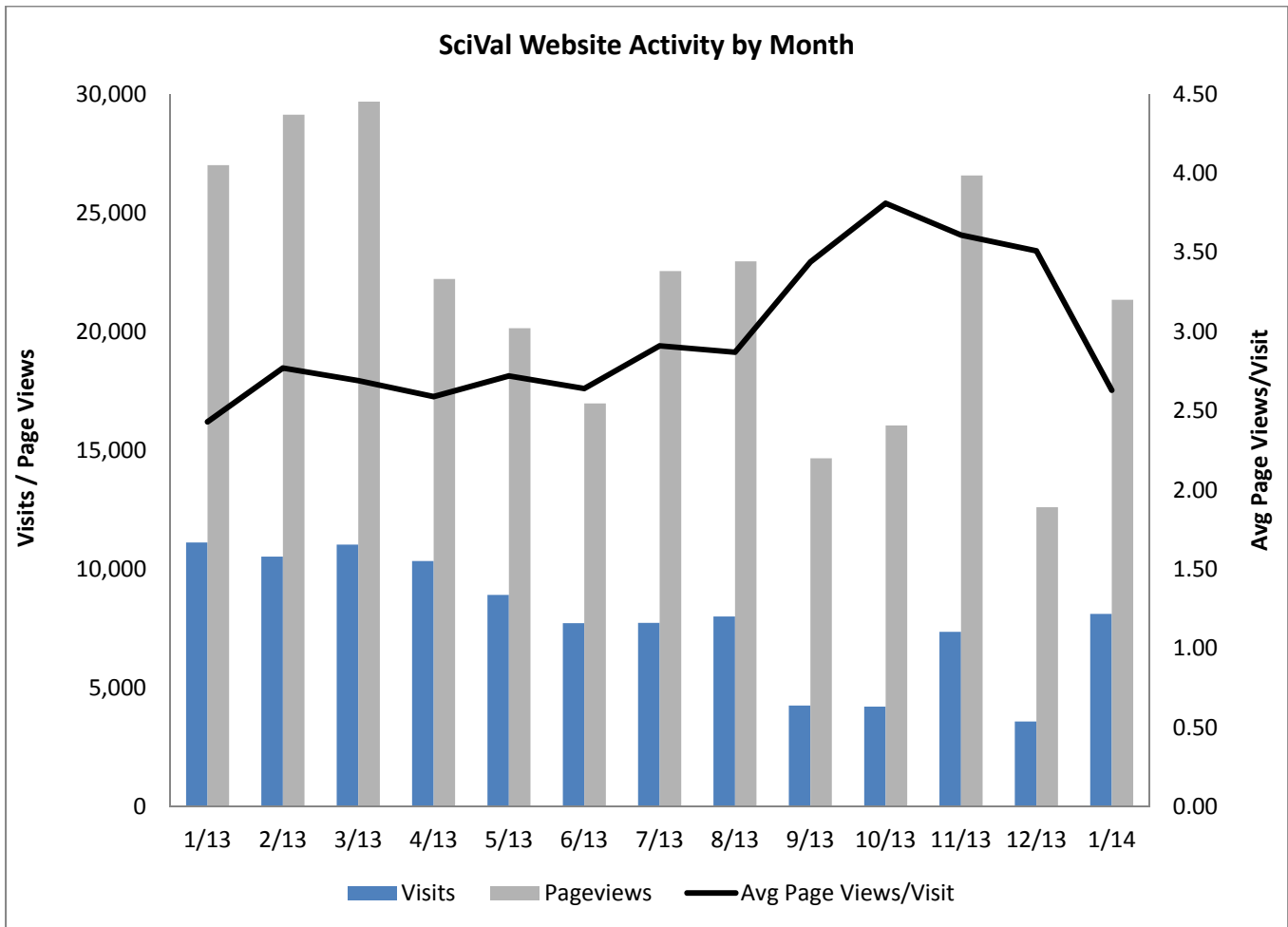
NOTES:

1. The total represented is the total bridge funding distribution less returned funds
2. Does not include awards currently in extension
3. Average

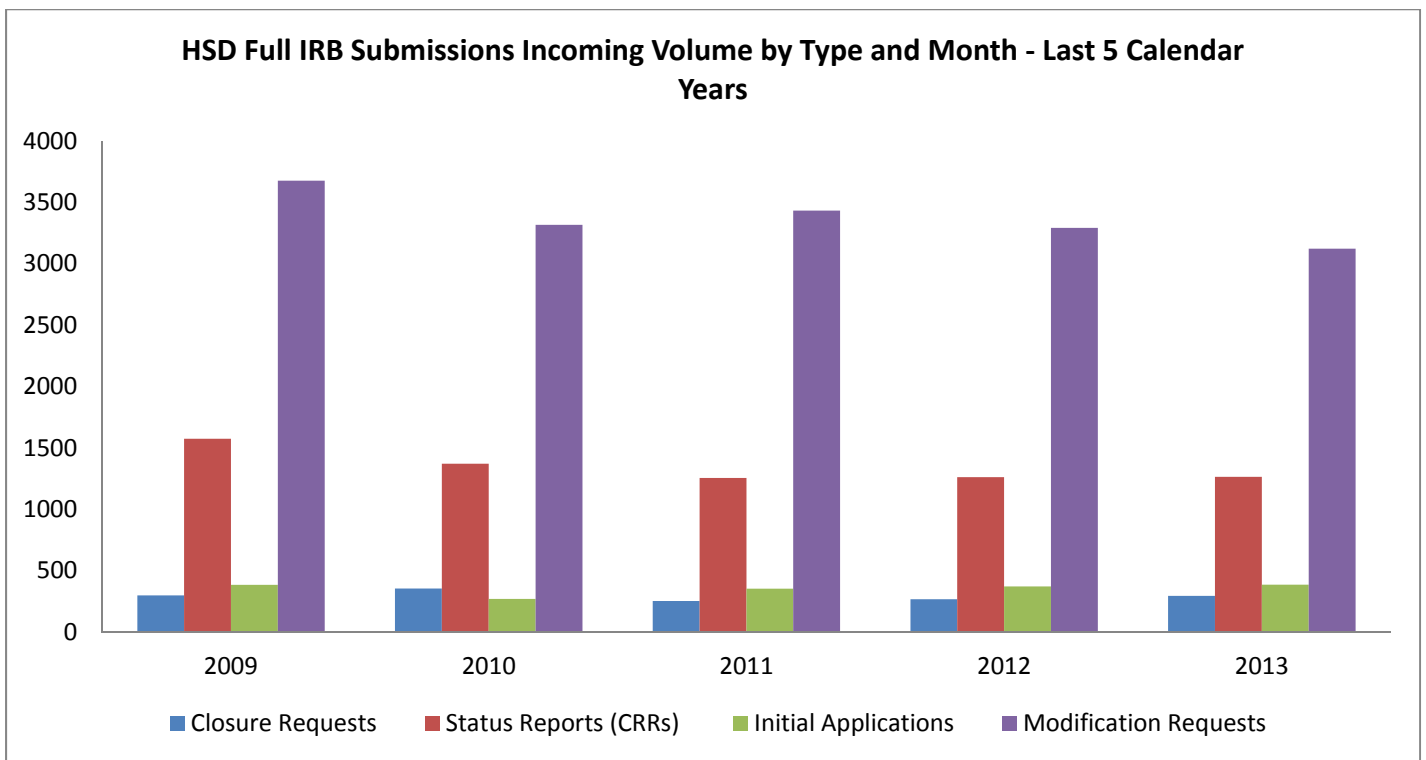
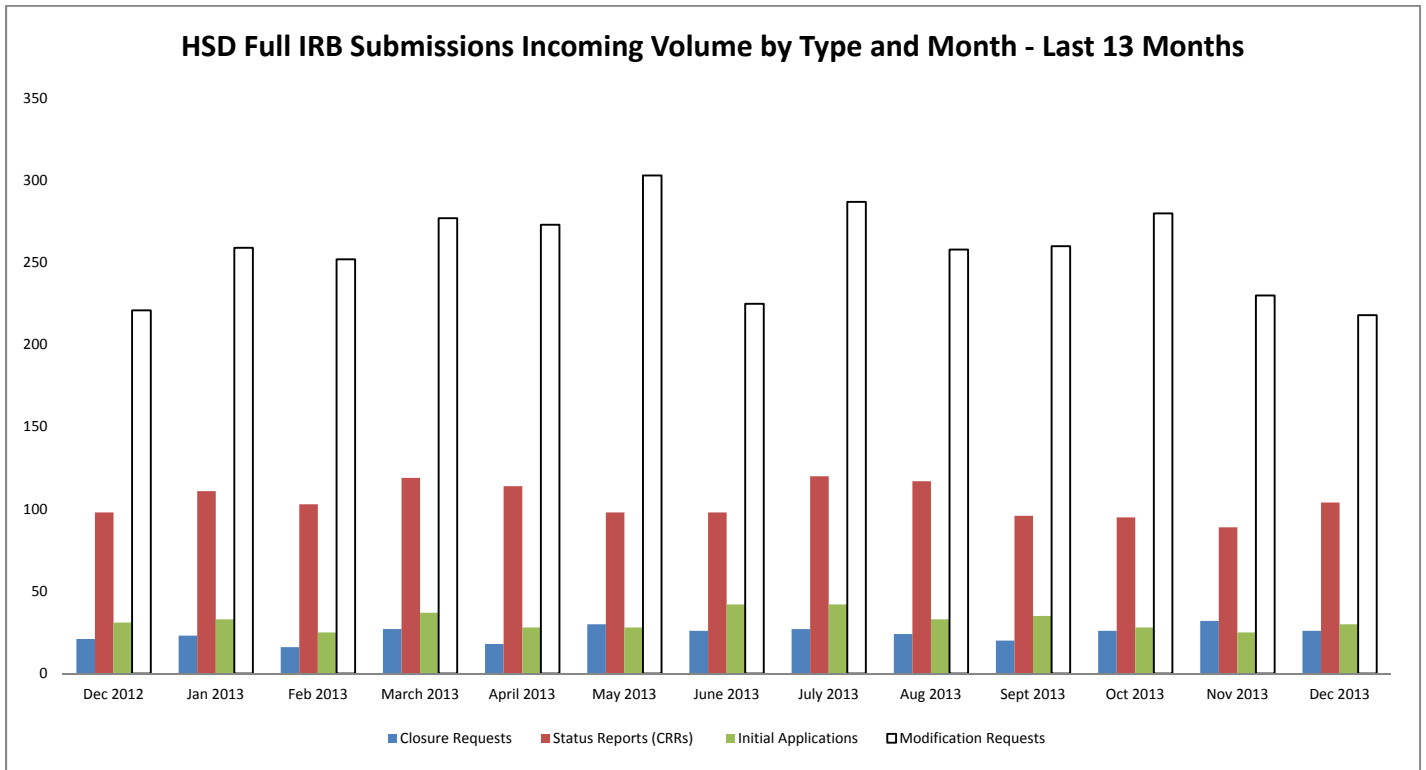
Success of Bridge Funding Program: Return on Investment Over Time (12/06-05/12)

*The ROI data for 12/10-05/12 may change as bridge funds currently in extension are returned



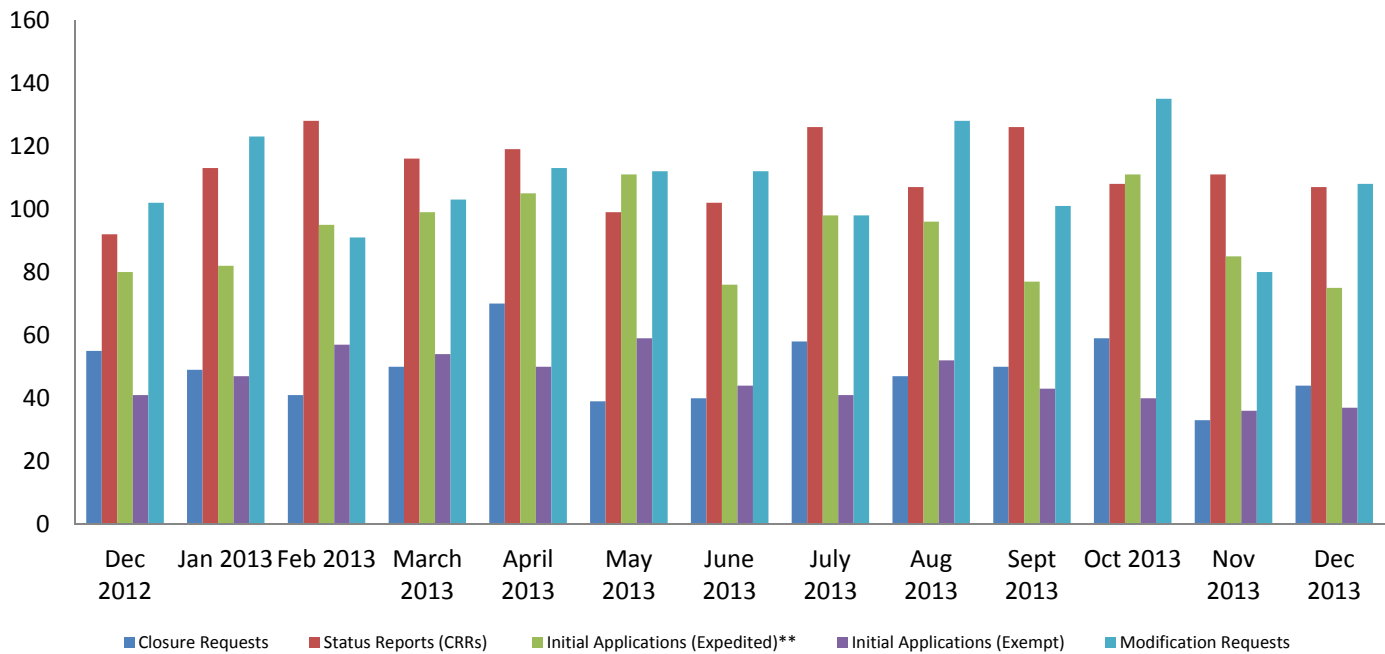


Human Subjects Division (HSD)



These two graphs show incoming submissions for HSD’s full IRBs to be relatively stable. However, submission types have not been weighted to show the different amount of work each submission type represents for researchers and for HSD staff. For example, a new study application that needs full IRB review requires significantly more work and time on the part of both HSD staff and researchers than does a closure request.

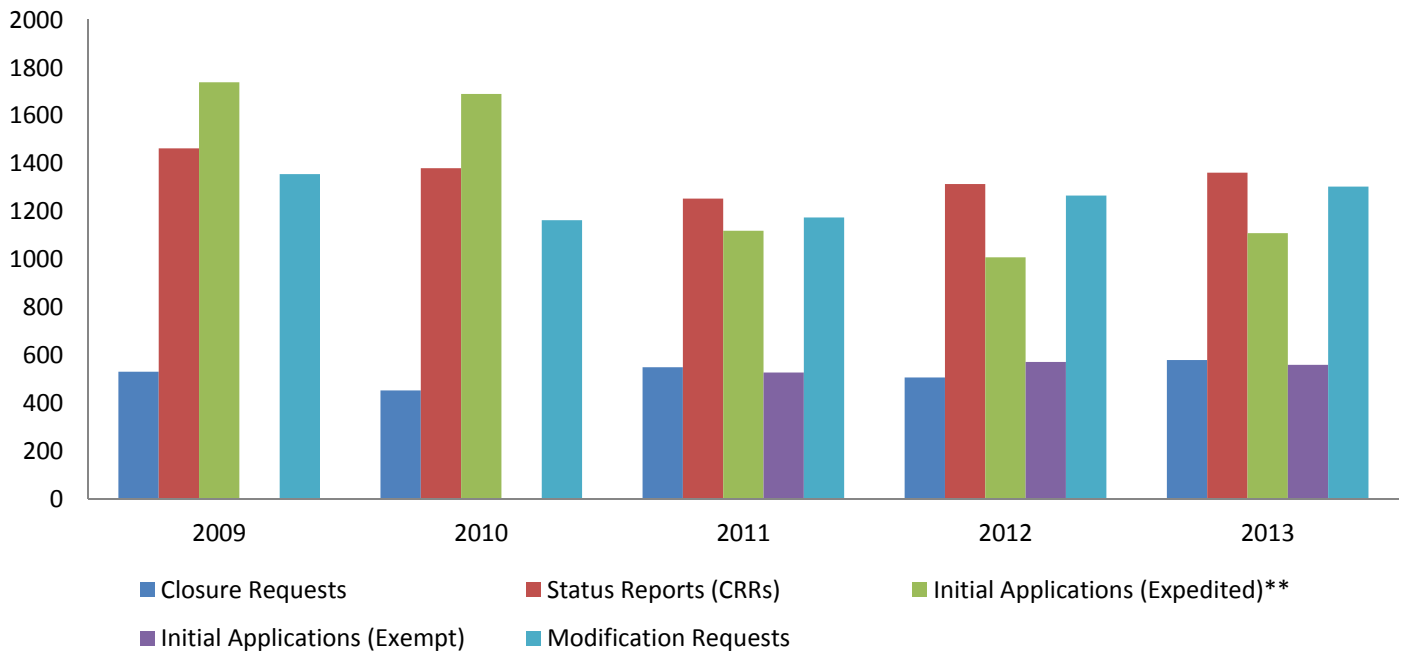
HSD Minimal Risk Submissions Incoming Volume by Type and Month* - Last 13 Months



*For the purposes of this chart, this category includes Medical Records Review and Use of Non-Identifiable Biological Specimens/Data Review Determination.

**These totals reflect the type of form initially submitted and do not reflect any subsequent transfers (e.g., full IRB initial application later determined to qualify for expedited review).

HSD Minimal Risk Submissions Incoming Volume by Type and Month* - Last 5 Calendar Years



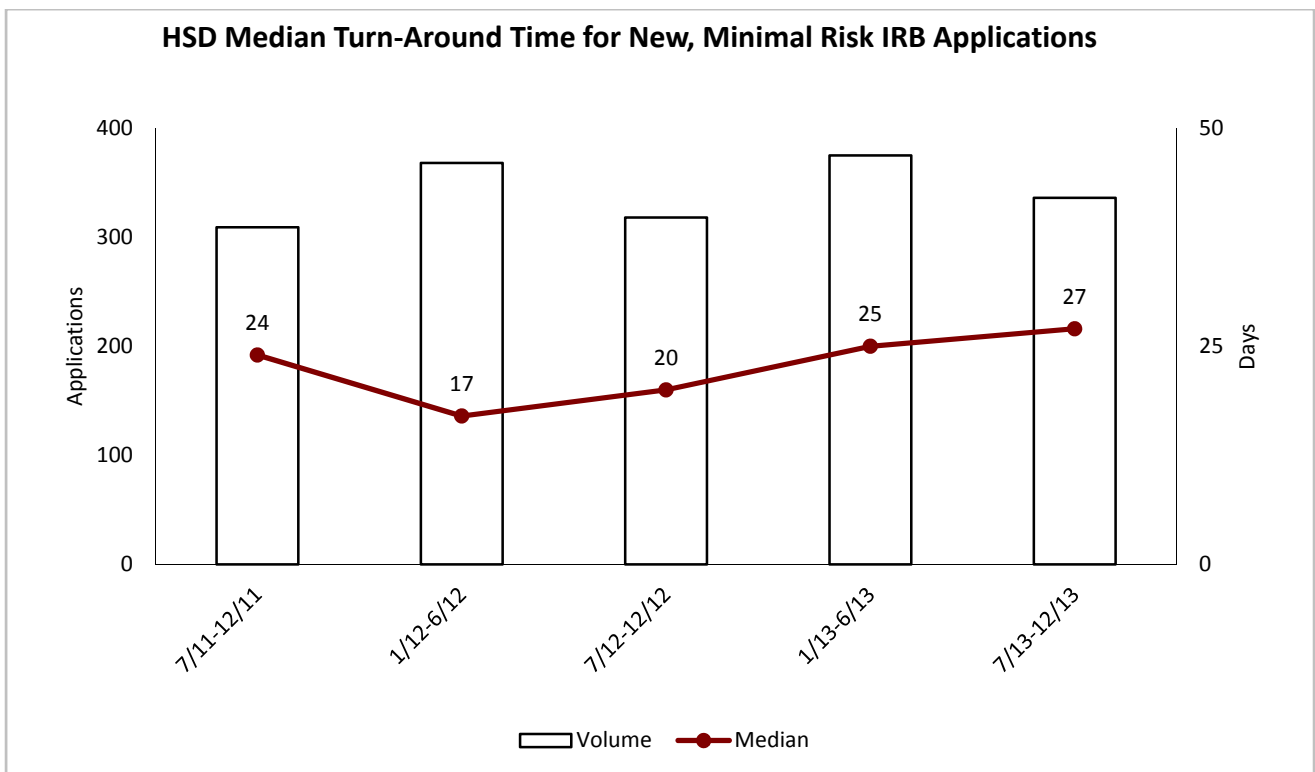
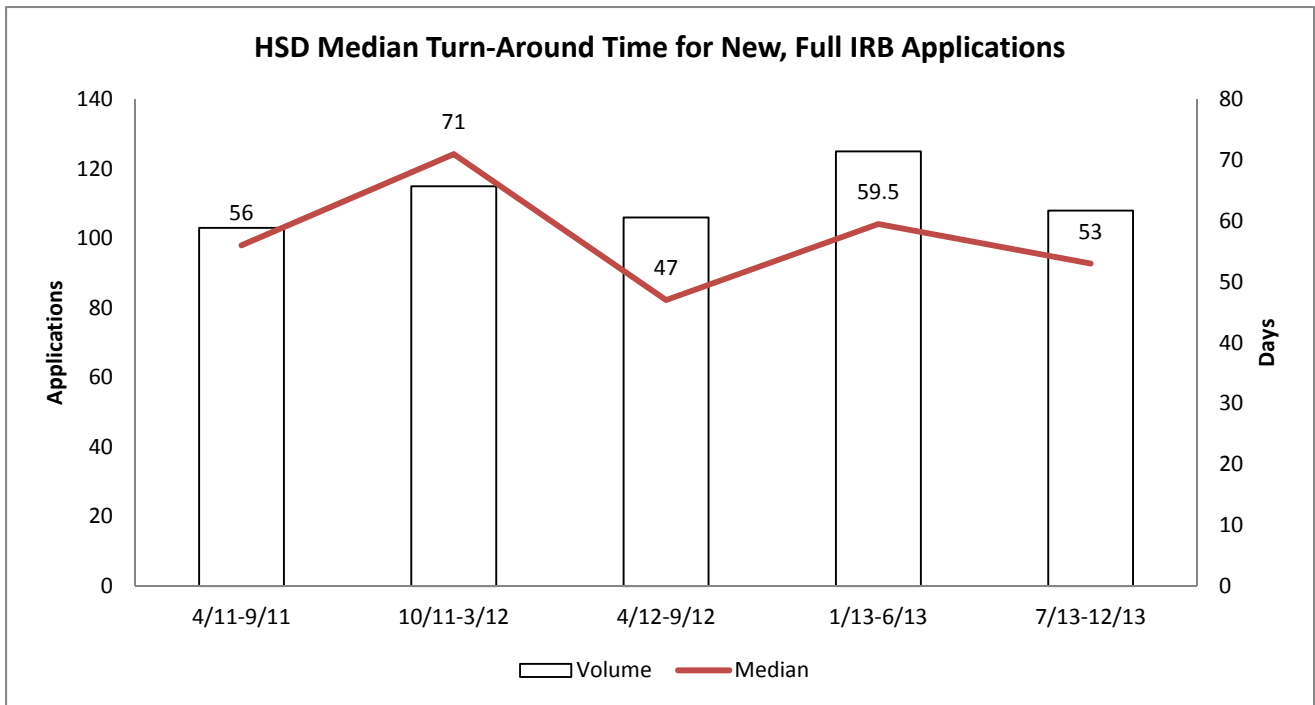
*For the purposes of this chart, this category includes Medical Records Review and Use of Non-Identifiable Biological Specimens/Data Review Determination.

**These totals reflect the type of form initially submitted and do not reflect any subsequent transfers (e.g., full IRB initial application later determined to qualify for expedited review).

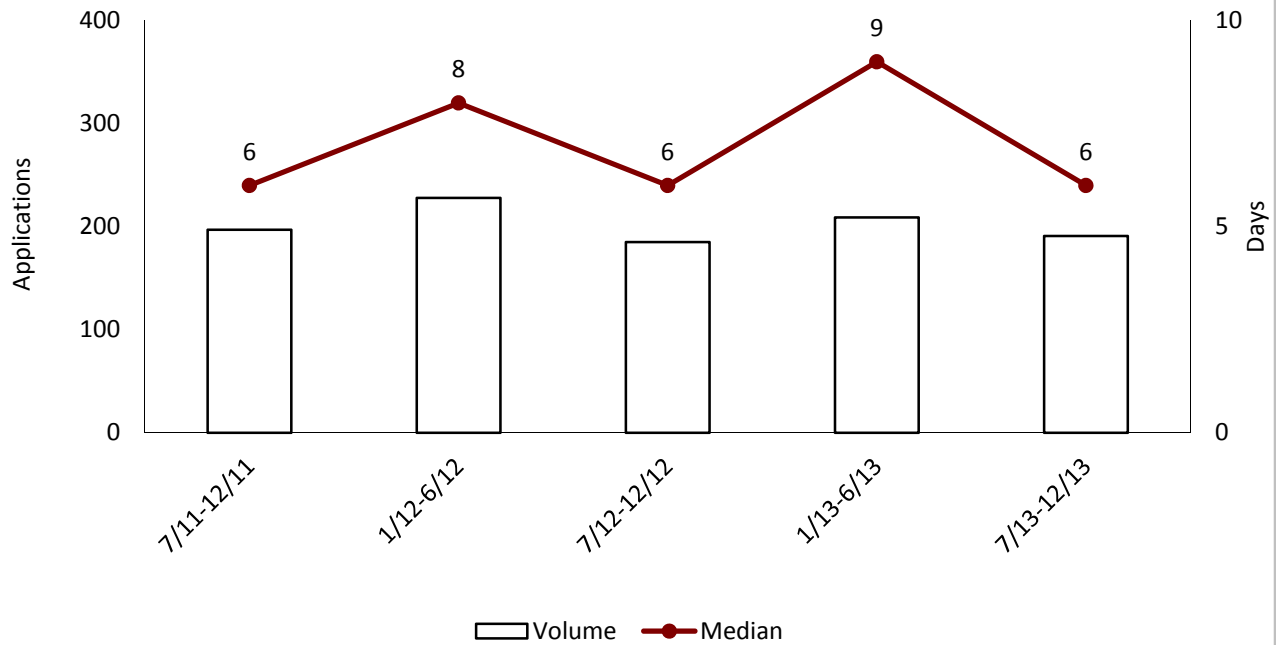
*** Initial Applications (Exempt) were included in Initial Applications (Expedited) for 2009 and 2010.

We believe the decrease in new expedited applications and new requests for Exempt status in the above graph is a reflection of recent HSD process improvement efforts. We have focused on taking advantage of flexibility in Federal regulations which allows us to eliminate work efforts where the risk to human subjects is low, decreasing our need to review some items.

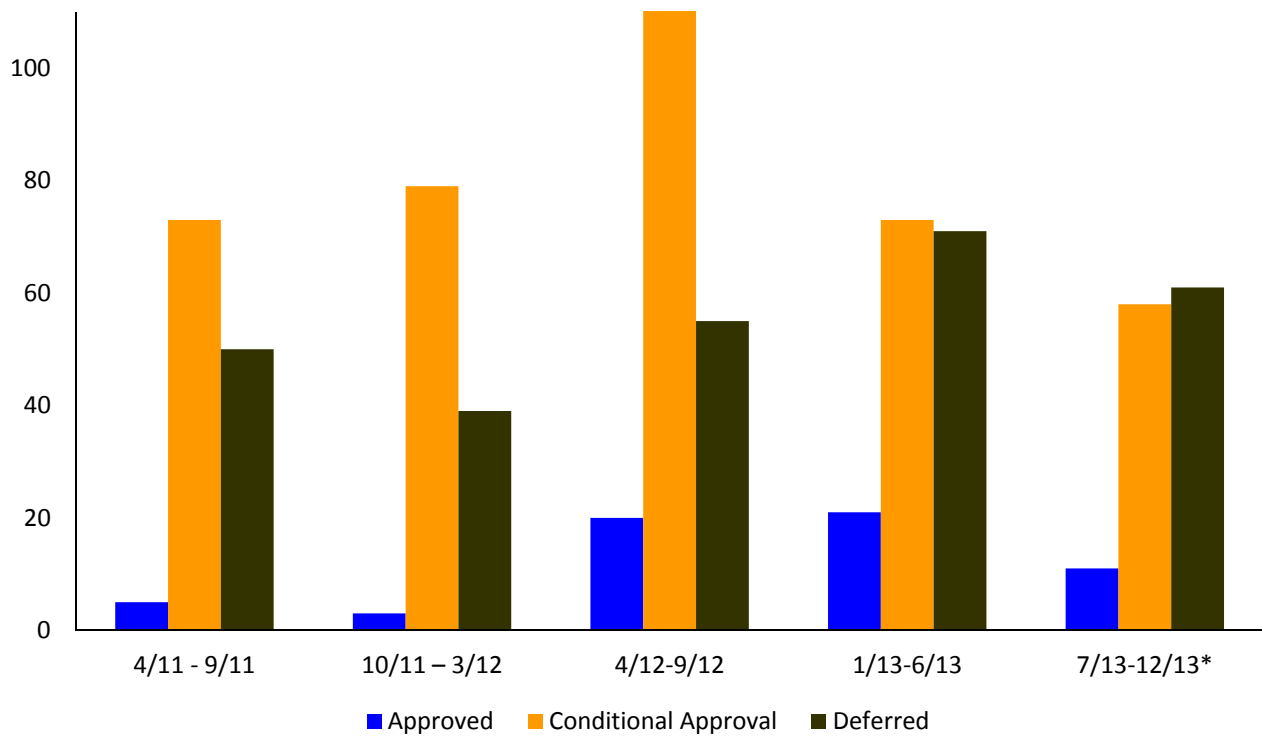
***NOTE:** HSD is no longer calculating Turn-Around Times (TAT), distribution of IRB outcomes, or modification frequencies on a quarterly basis. As of Jan 2013, Turn-Around Time metrics will be available in early Feb each year for the period of July-December of the year prior, and in early August for the period of January-June of that year. However, HSD HAS added target Turn-Around Times for full board and expedited applications and ranges.

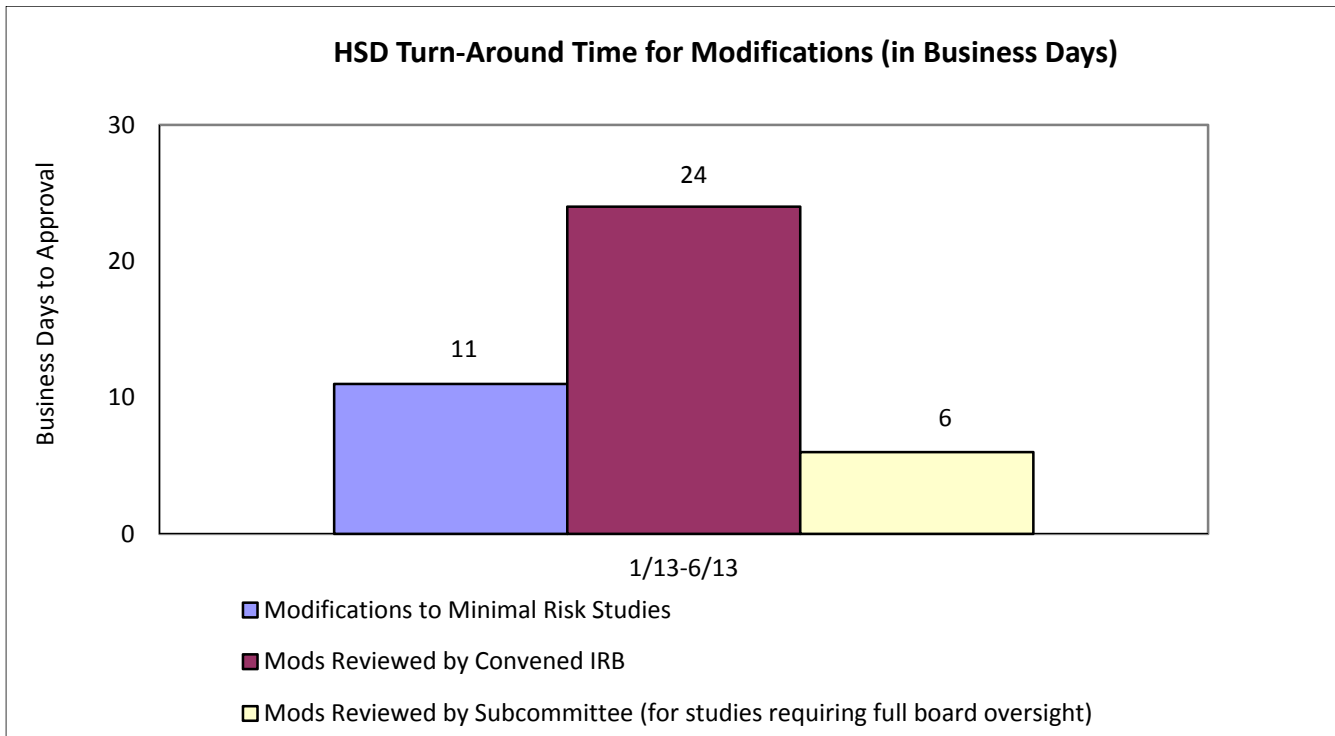


HSD Quarterly Turn-Around Time for New Applications for Exempt Status

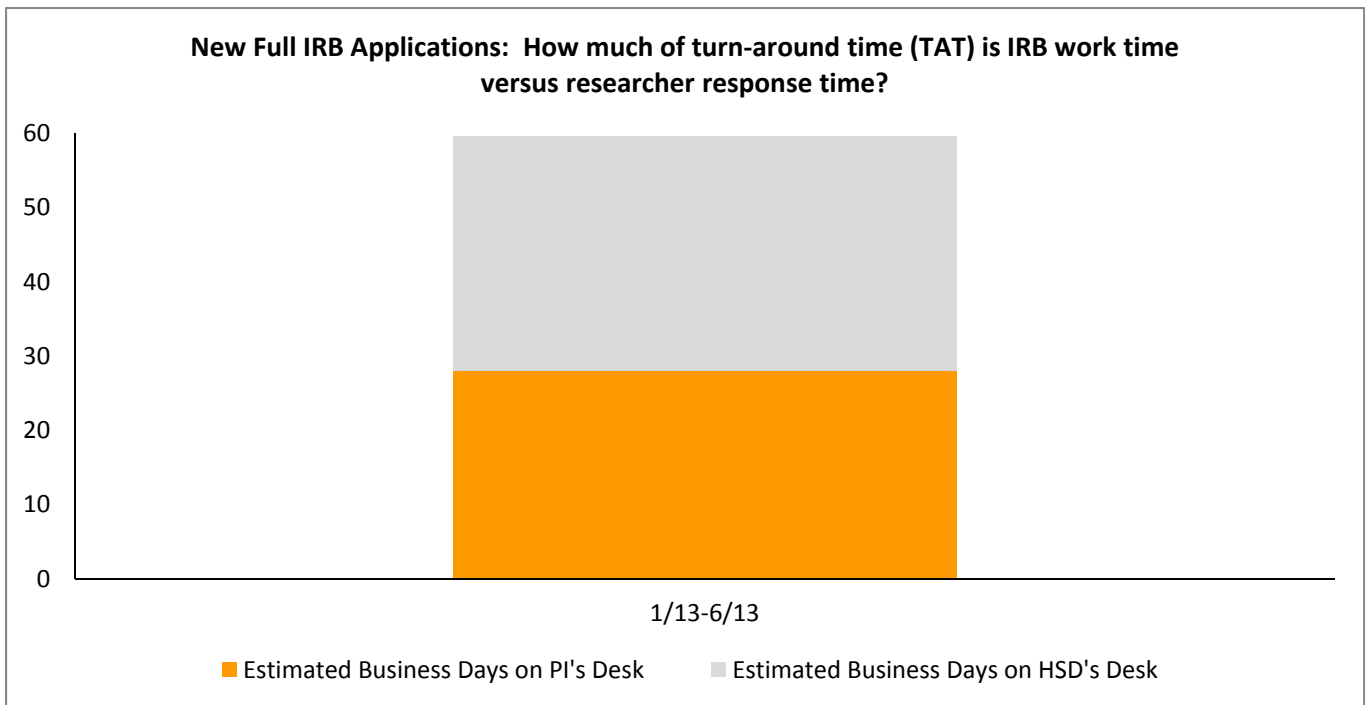


HSD Distribution of Outcomes of First Full IRB Review





*NOTE: HSD is no longer calculating Turn-Around Times (TAT), distribution of IRB outcomes, or modification frequencies on a quarterly basis. As of Jan 2013, Turn-Around Time metrics will be available in early Feb each year for the period of July-December of the year prior, and in early August for the period of January-June of that year. However, HSD HAS added target Turn-Around Times for full board and expedited applications and ranges.



New Chart Using the average number of letters per study, and the median researcher response time for each letter type, we can estimate how many of the 59.5 business days it took to reach approval were due to HSD and IRB work time (31.5 days; 53%) compared to how many were due to the time researchers took to respond to HSD and IRB letters (28 days; 47%).

External Trainings				
Unit	Session Title	Action (Training/ Outreach)	Sessions Within the Last 3 Months	Total Attendees Within the Last 3 Months
OEI	Lean Training	Training	1 (2 days)	45
OSP	FEC Beyond the Basics - Using the Tools - Calculators, Worksheets and Reports	Training	1	14
OSP	eFECs for FEC Coordinators	Training	1	7
OSP	Introduction to Grant and Contract Certification (GCCR)	Training	1	11
OSP	Introduction to Faculty Effort Certification	Training	1	12
OSP	Introduction to Research Administration	Training	1	22
OSP	FEC Beyond Basics - Modifying an FEC Using Comments and Adjusting Cost Sharing	Training	1	4
OSP	Grants.gov: The Basics	Training	1	12
OSP	How to Prepare a Basic Budget	Training	1	19
OSP	FES Beyond The Basics - Modifying an FEC, Change Outside EFECs and Recertifications	Training	1	6
ORIS	SAGE 101		3	27
ORIS	SAGE Budget		1	5
ORIS	SAGE 102: Grant Runner		2	13
ORIS	FIDS 101		1	7

Guidance, Training and Outreach - Development & Updating			
Unit	Name	Action (Development / Update)	Description
OEI	Office of Minority Affairs & Diversity	Outreach	Leadership Retreat
OEI	Environmental Health & Safety	Consultation/ Development	Training consultation
HSD	Training program for new staff	development	Continued developing materials and modules for training of new HSD staff
HSD	Training program for existing staff: SOP Renovation	development	Creating and implementing a training program for all HSD staff for learning about HSD's new set of standard operating procedures and associated tools. This includes monthly staff training retreats and breakout modules targeted to different staff positions
HSD	Training program for researchers	development	Beginning to develop training outreach to campus - includes targeted education around SOP renovation changes as well as the start of an effort to provide more regular on-campus education

OSP	SCRI Staff Assignment training	Development	Training campus administrators on SCRI staff assignment agreements
OSP	Foster School of Business	Development	Meet and greet to establish working relationships with new team assignments
OSP	A/ID	Development	Meet and greet to establish working relationships with new team assignments
OSP	Grants Administration Support Group (GASP) at Bothell	Update	Meeting to share updates
OSP	UW Bothell Faculty	Development	Presented a budget class for faculty – part of a grant writing workshop
OSP	UW Bothell New Faculty Orientation	Development	Prepared materials for UWB New Faculty Orientation by Office of Research
OSP	Oceanography	Development	Meet and greet to establish working relationships with new team assignments
OSP	Computer Engineering	Development	To review best practices and address any process questions.
OSP	Material Science and Engineering	Development	Meet and greet to establish working relationships with new team assignments
OSP	Microbiology	Update	Meeting to share updates
OSP	Global Health	Update	Meeting to share updates
OSP	I-TECH	Update	Meeting to share updates
OSP	IHME	Update	Regular meeting to share updates
OSP	MRAM	Update/Development	MRAM communication to campus regarding updates on existing and new regulations and processes
OSP	Corporate and Foundation Relations	Update	Meeting to share updates
OSP	Microbiology	Outreach	Ad hoc meeting to gather input
OSP	SOM ABC Team	Development	Meet and greet to establish working relationships
OSP	SOM ABC Team	Training	Intro to Research Administration and How to Prepare a Basic Budget
OSP	Research Administrators Peer Network	Outreach	Meeting to share updates and gather feedback
ORIS	Office of Minority Affairs Info Session	Development	Developed and delivered an info session in collaboration with OSP on the research administration life cycle and related systems to research administrators and investigators from the Office of Minority Affairs.