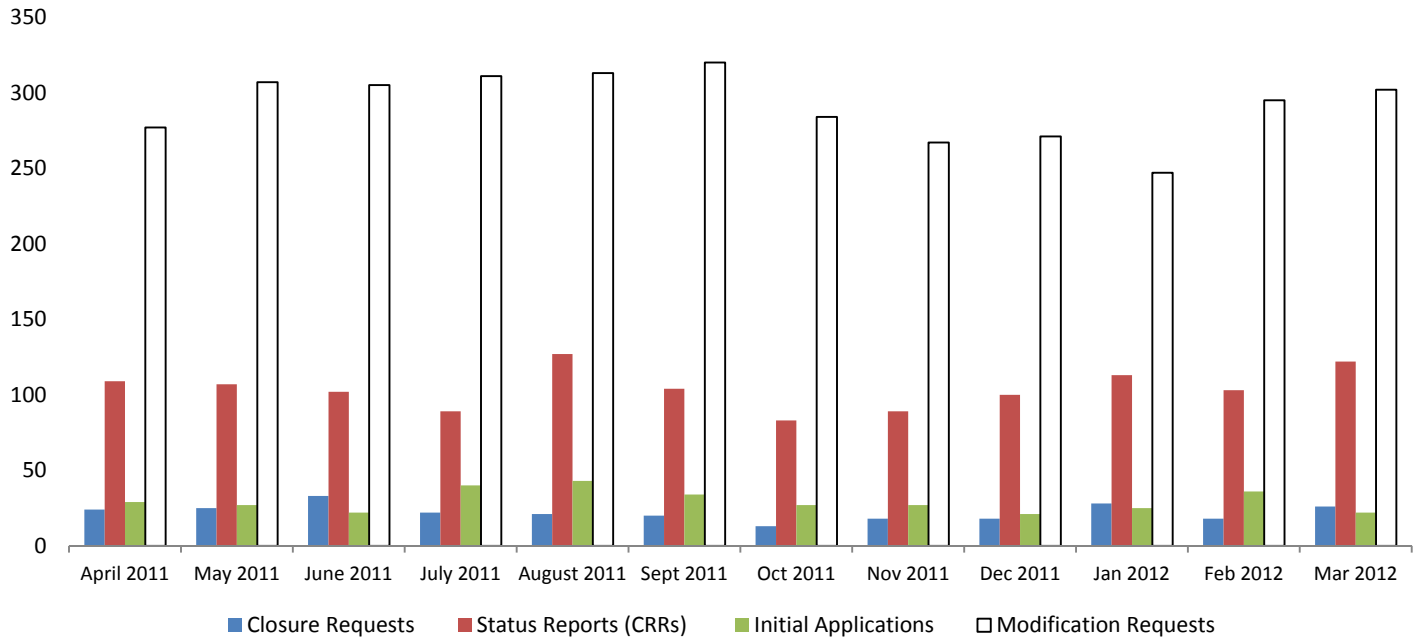


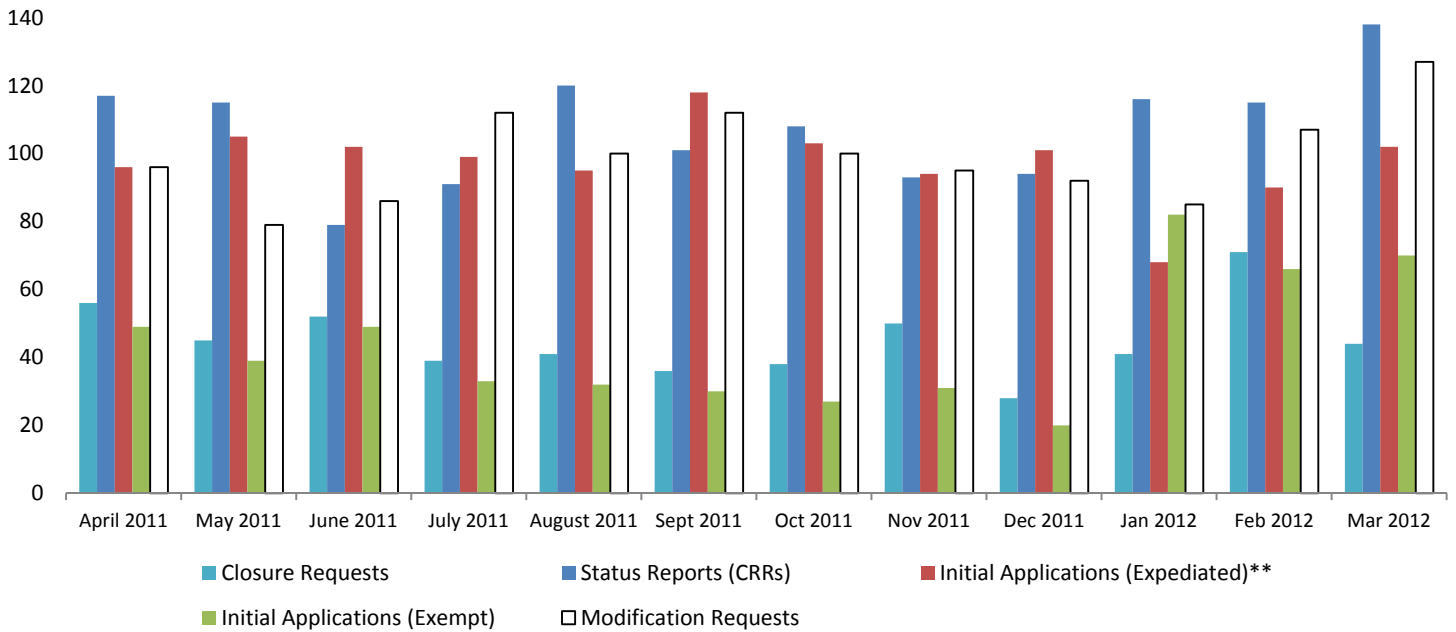


Customer Service

**HSD Full IRB Submissions Incoming Volume by Type and Month
Last 12 Months**



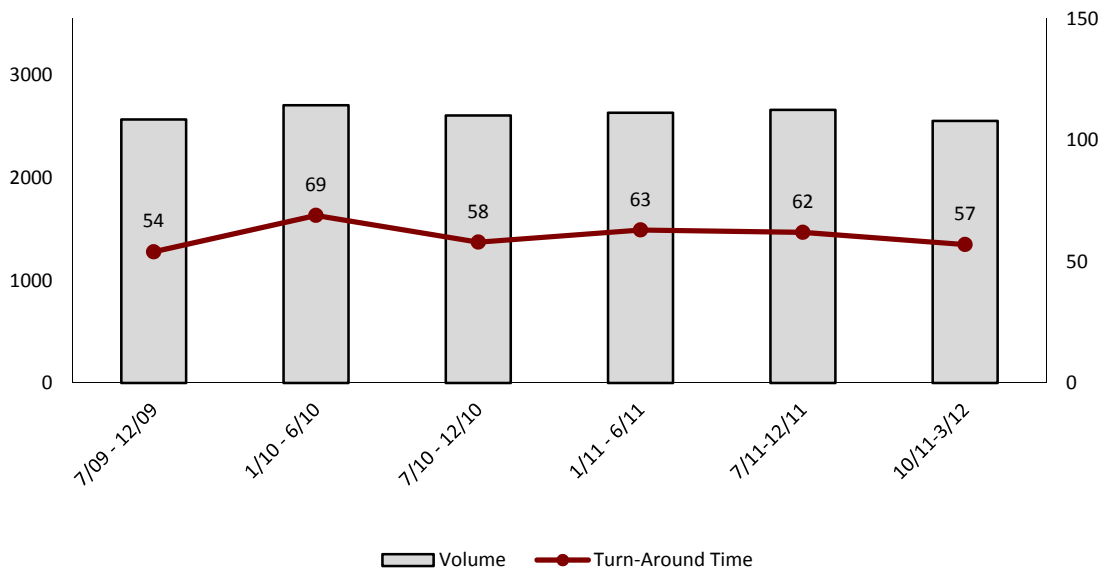
HSD Minimal Risk Submissions Incoming Volume by Type and Month* Last 12 Months



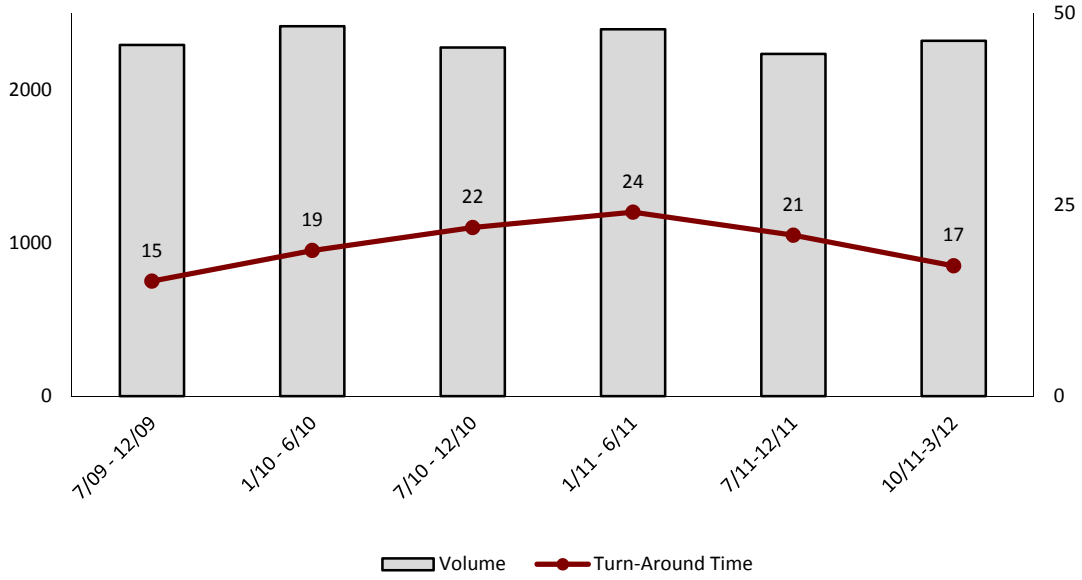
*For the purposes of this chart, this category includes Medical Records Review and Use of Non-Identifiable Biological Specimens/Data Review Determination

**These totals reflect the type of form initially submitted and do not reflect any subsequent transfers (e.g., full IRB initial application later determined to qualify for expedited review).

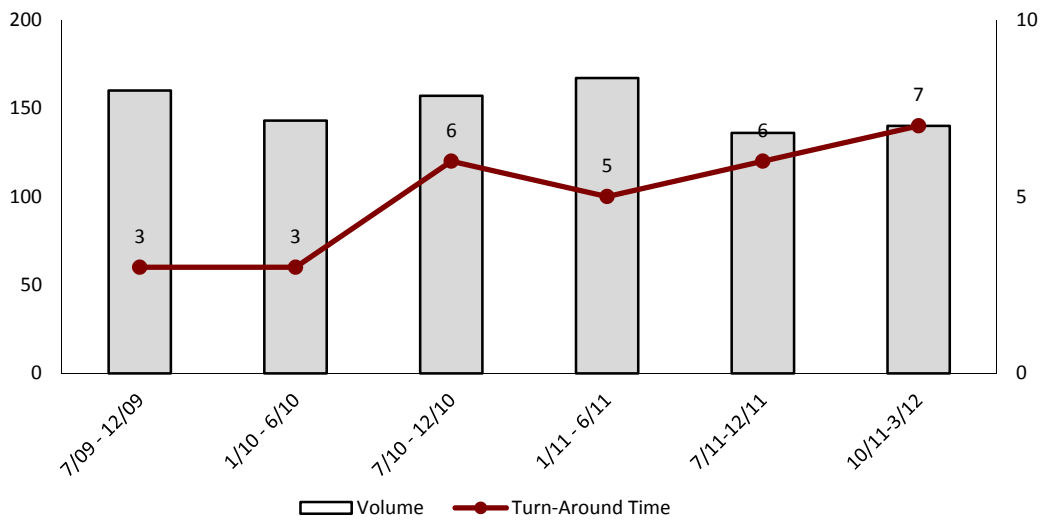
HSD Quarterly Turn-Around Time for New, Full IRB Applications 7/09 - 3/12



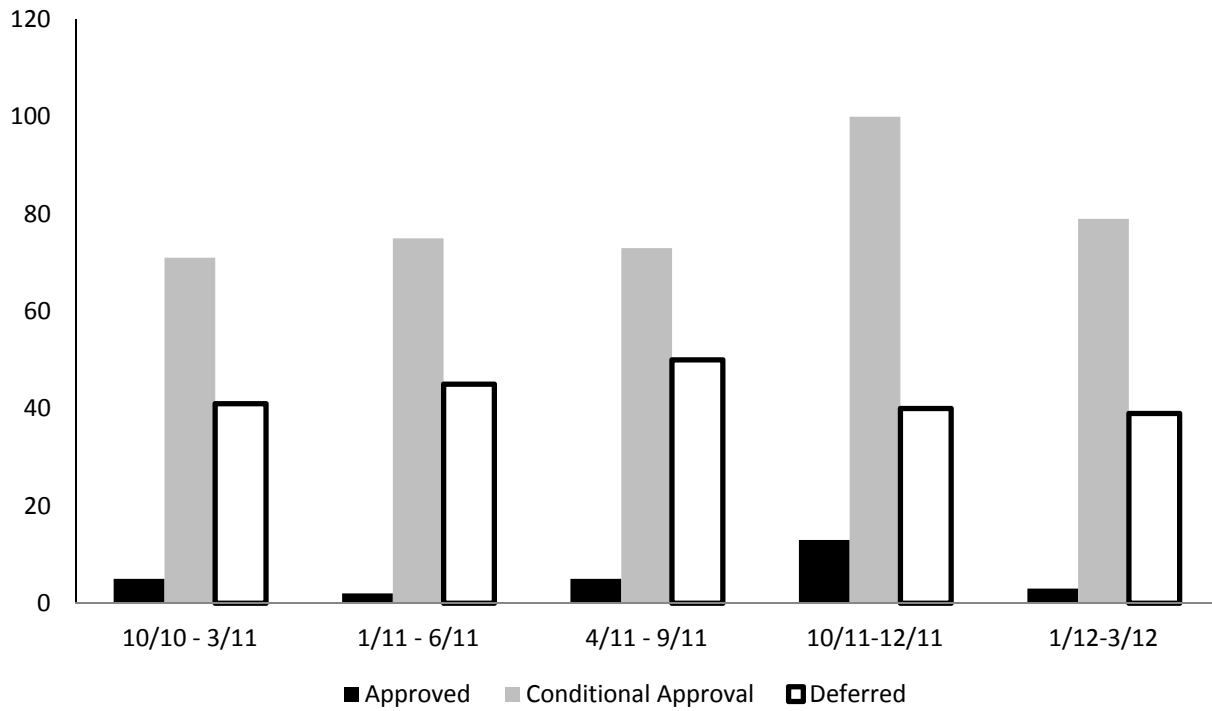
**HSD Bi-Annual Turn-Around Time for New, Minimal Risk IRB Applications
7/09 - 3/12**



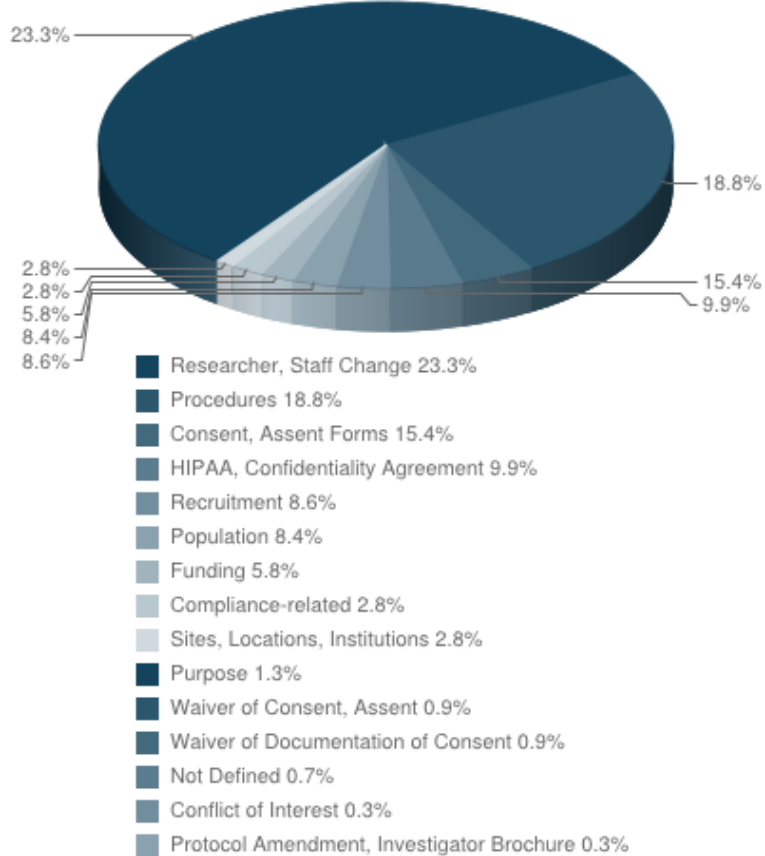
**HSD Bi-Annual Turn-Around Time for New Applications, Exempt Status
7/09 - 3/12**



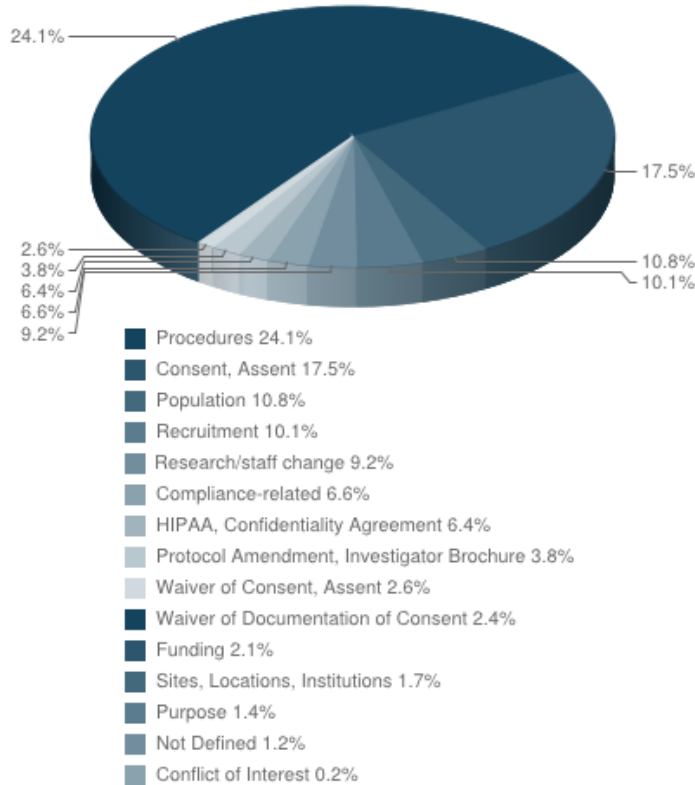
**HSD Distribution of Outcomes of First Full IRB Review
10/10 - 3/12**



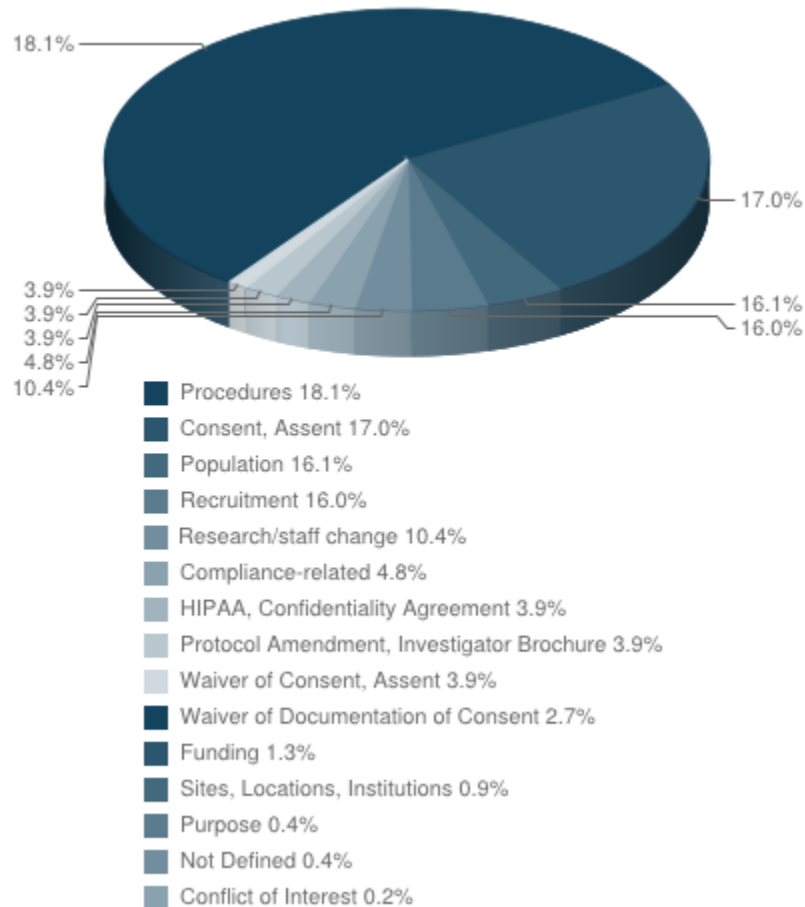
Frequencies of Changes Requested in Minimal Risk Modifications 1/12-3/12



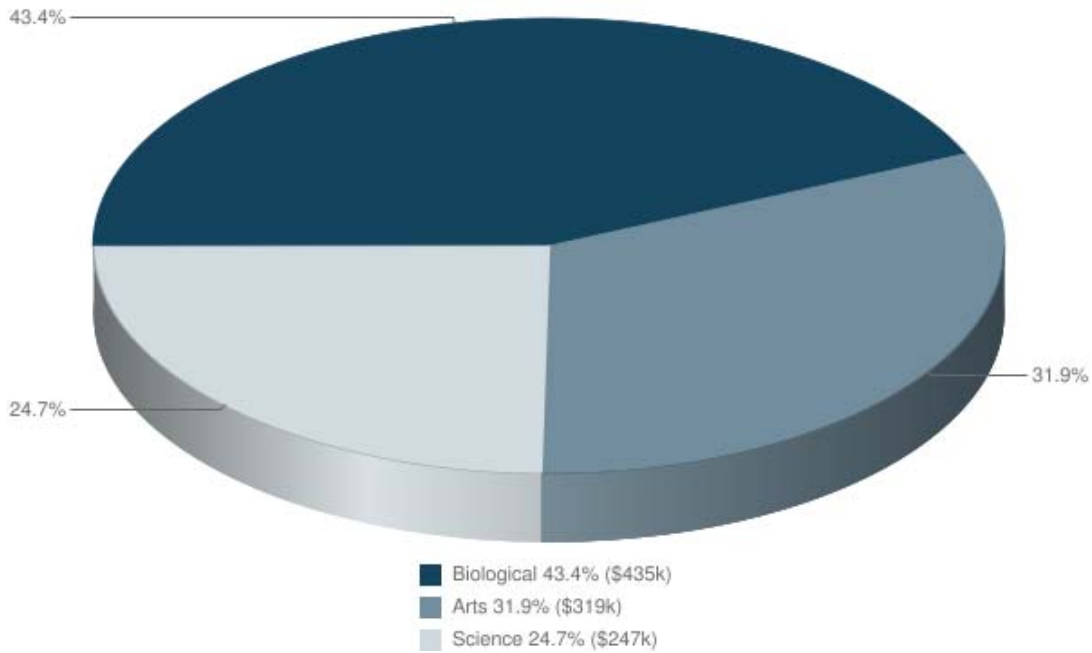
Frequencies of Changes Requested in Modifications Reviewed by Convened IRB 1/12-3/12



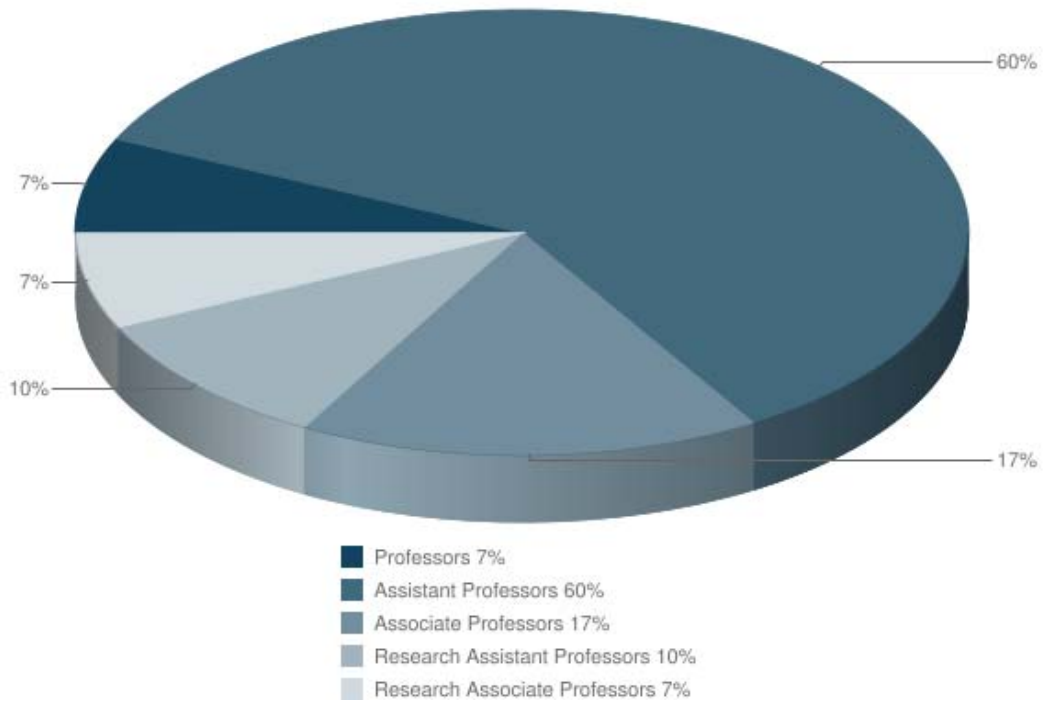
Frequencies of Changes Requested in Modifications Reviewed by Subcommittee (For Studies Requiring Full Board Oversight) 1/12-3/12



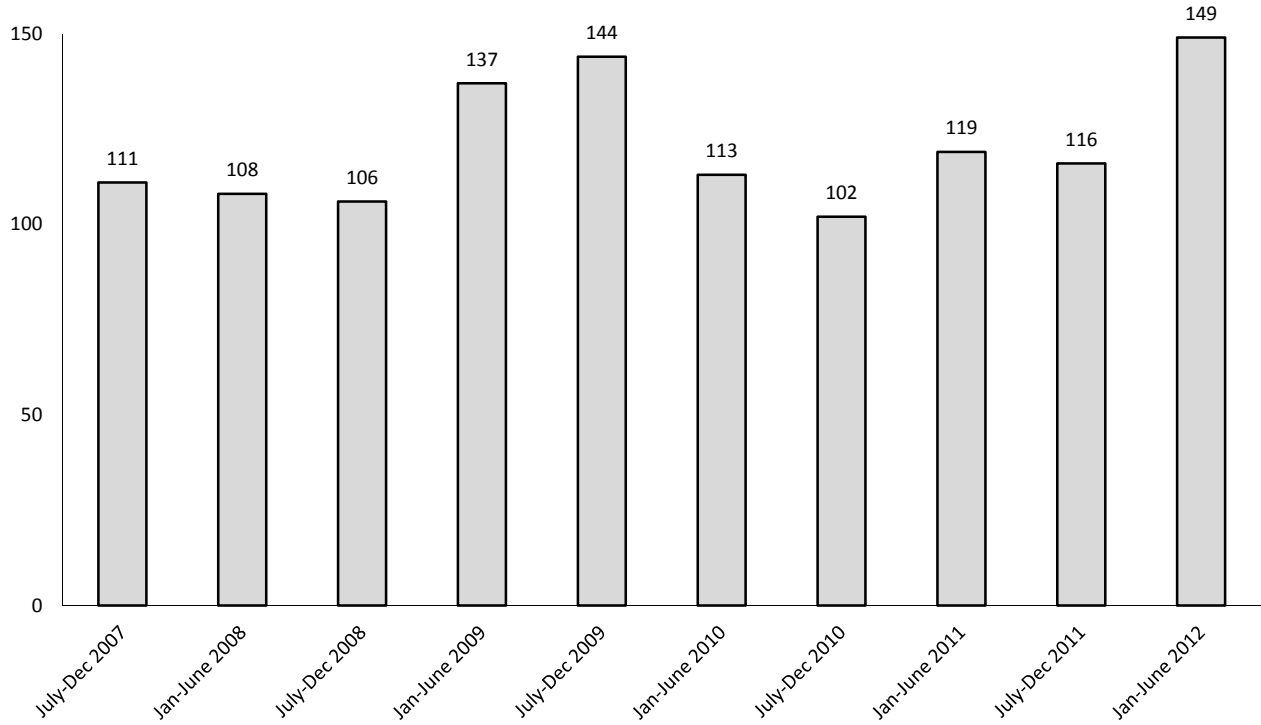
RRF Awards by Subcommittee, Fall 2011



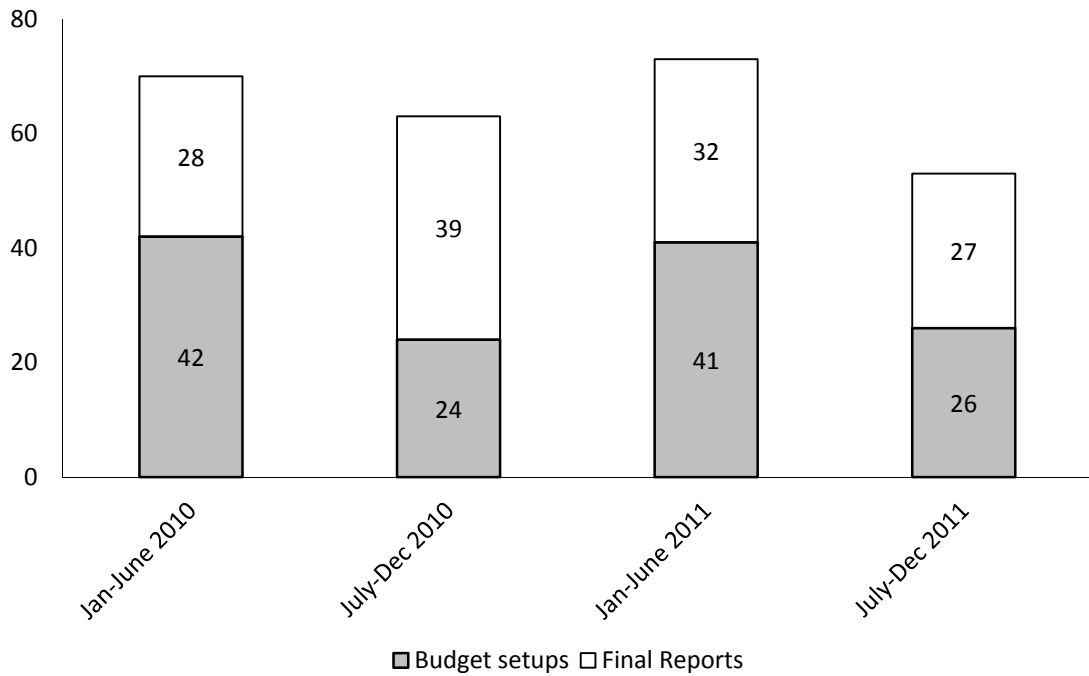
RRF Awards by Rank, Fall 2011



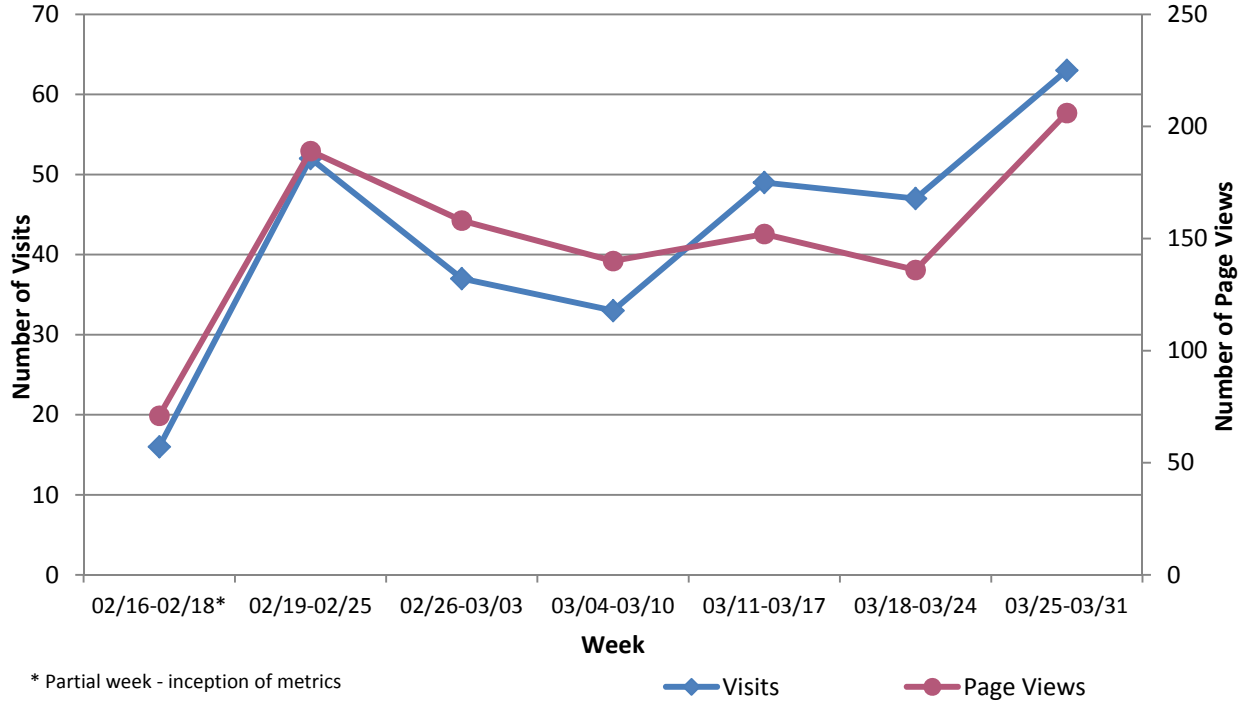
Royalty Research Fund Proposals



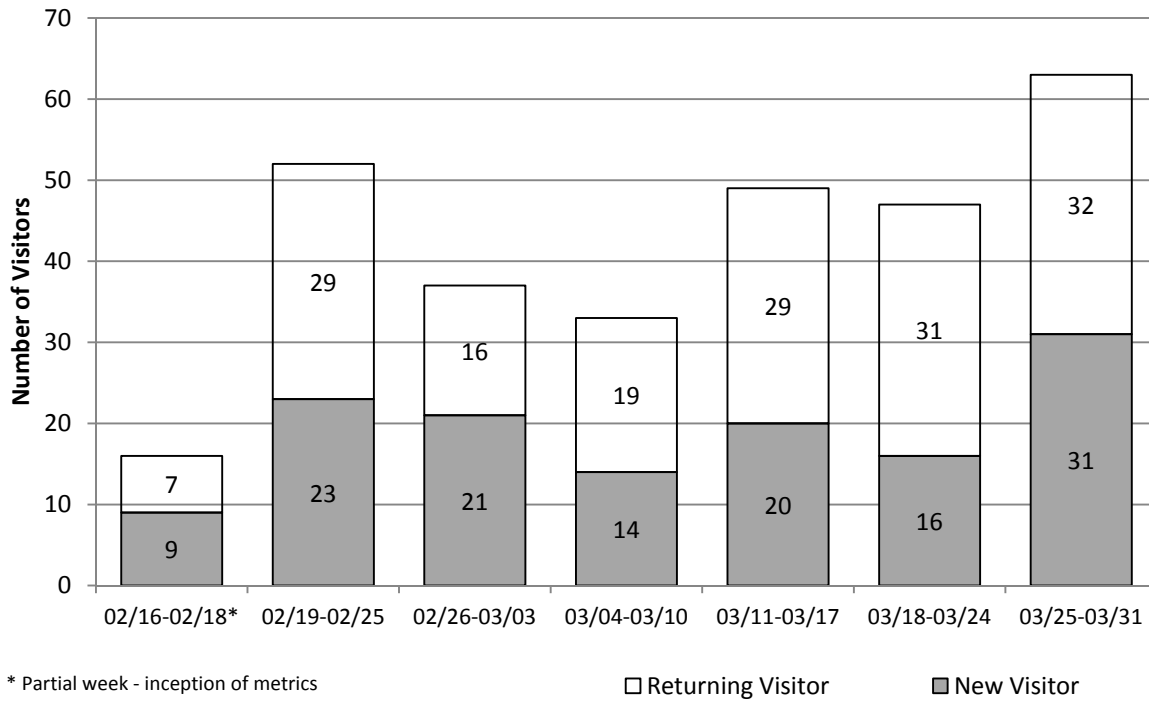
Royalty Research Fund Budget Setups and Final Reports



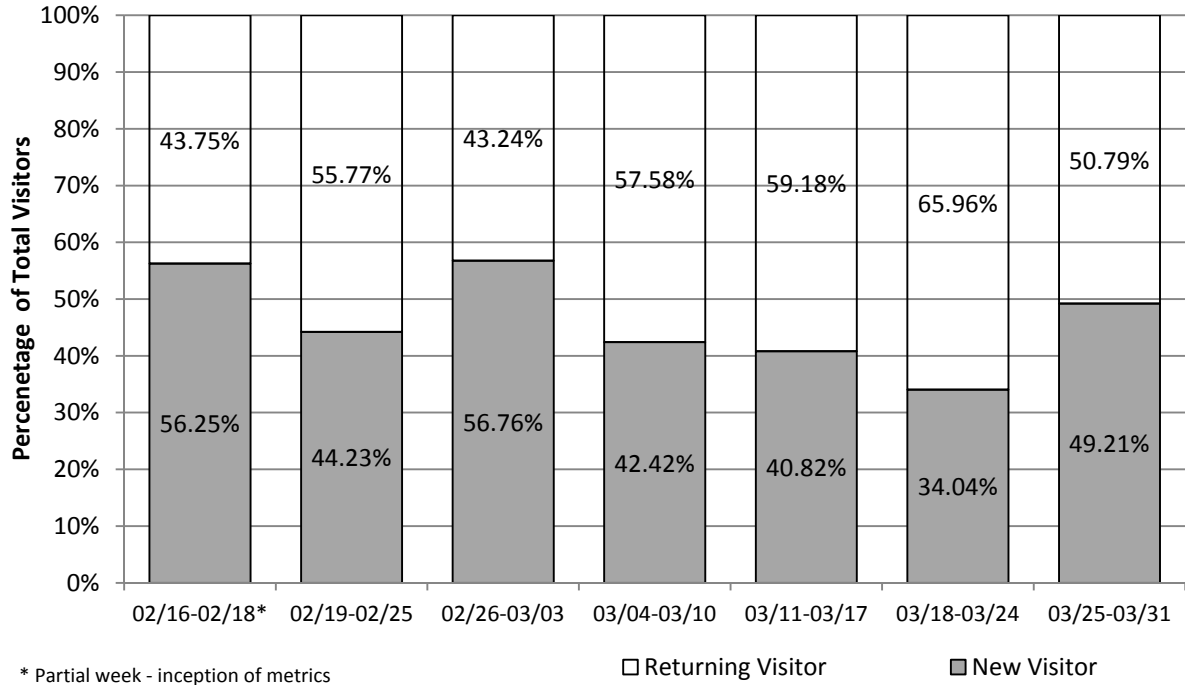
**OEI Website: Number of Visits + Page Views by Week
Inception - 03.31.2012**



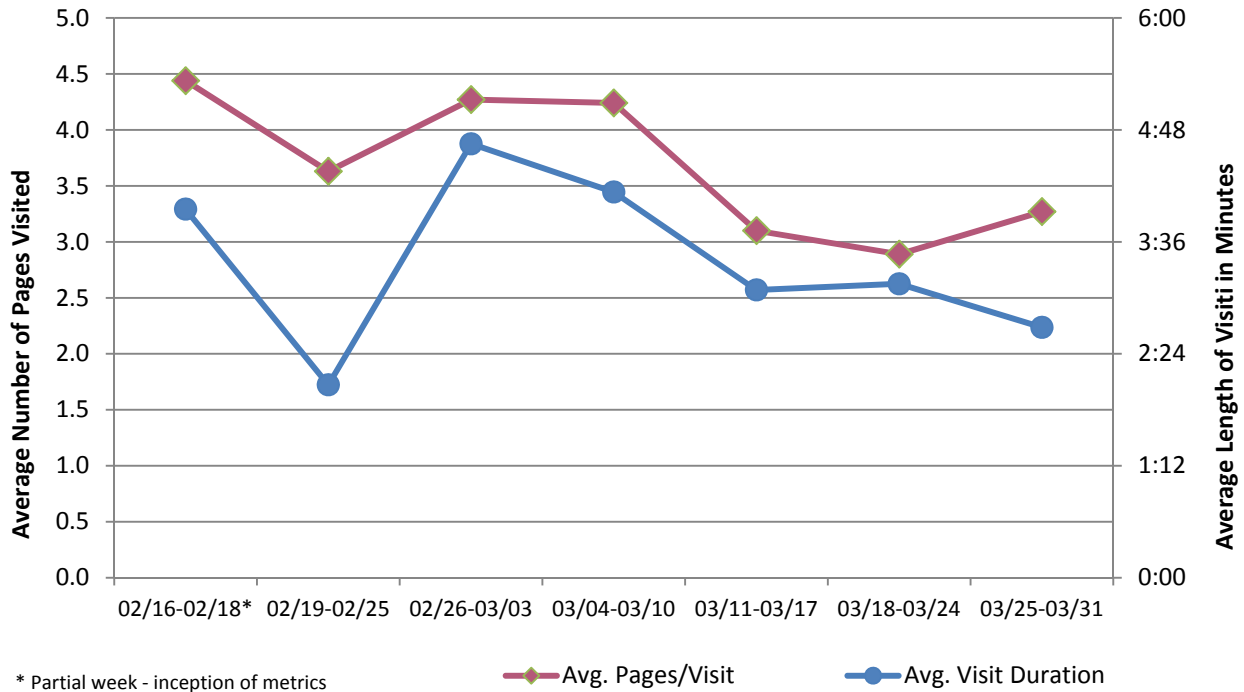
OEI Website: New and Returning Visitors by Week - Number



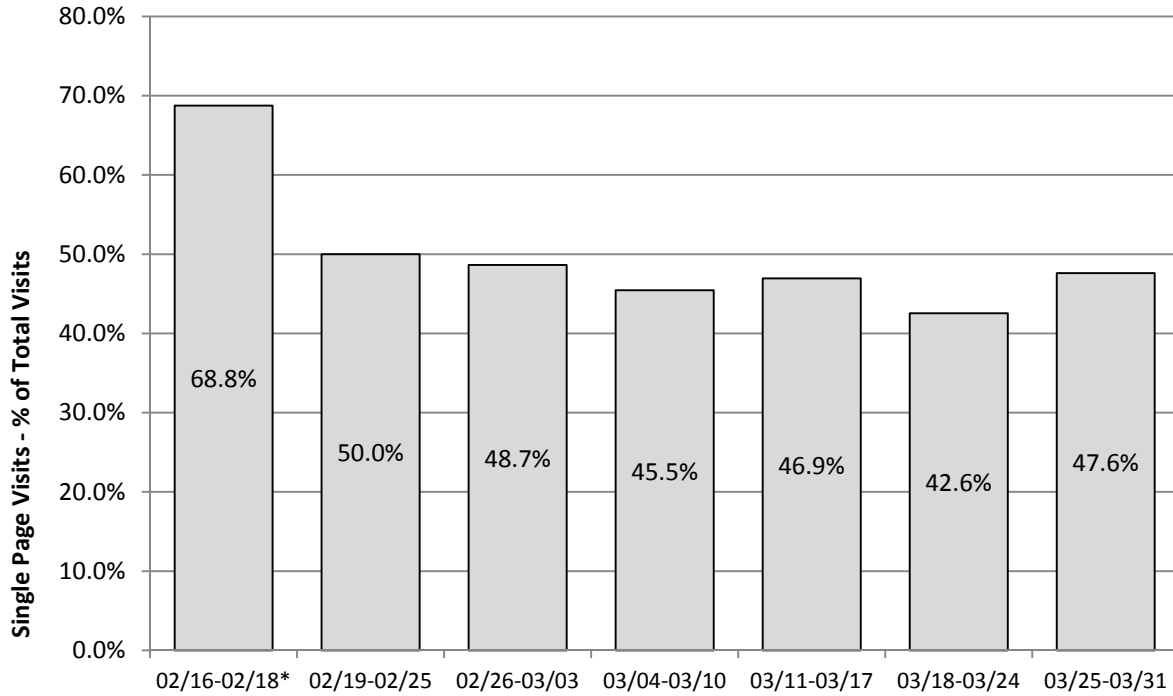
OEI Website: New and Returning Visitors by Week - % of Total



OEI Website: Average Pages/Visit + Average Visit Length by Week



OEI Website: Single-Page Visits as a Percent of Total Visits by Week



* Partial week - inception of metrics

Success of Bridge Funding Program December 2006 - December 2010

Submission Date	Total Distribution Provost ¹	Total Distribution Matching ¹	Total Provost and Matching	Number of Awards	Awards Receiving External Funding within 1.5 yrs of award	% Receiving Funding	External Grants Obtained (direct and indirect costs)	Return on Investment (fold return)
December 2006	\$504,581	\$517,748	\$1,022,329	13	10	77%	\$10,408,299	10.2
May 2007	\$372,287	\$388,270	\$760,557	13	12	92%	\$10,236,910	13.5
December 2007	\$503,444	\$560,724	\$1,064,168	15	8	53%	\$7,575,584	7.1
May 2008	\$563,220	\$559,524	\$1,122,744	12	6	50%	\$9,190,014	8.2
December 2008¹	\$557,006	\$563,768	\$1,120,774	13	9	69%	\$14,546,157	13
May 2009	\$401,668	\$406,137	\$807,805	10	6	60%	\$2,953,107	3.7
December 2009¹	\$425,361	\$461,266	\$886,627	12	10	83%	\$9,841,584	11.1
May 2010^{1,2}	\$204,008	\$204,008	\$408,016	6	4	67%	\$4,563,844	11.2
December 2010	\$404,874	\$404,873	\$809,747	10	8	80%	\$9,057,210	11.2
Total	\$3,936,449	\$4,066,318	\$8,002,767	94	65	70.1%³	\$78,372,709	9.8

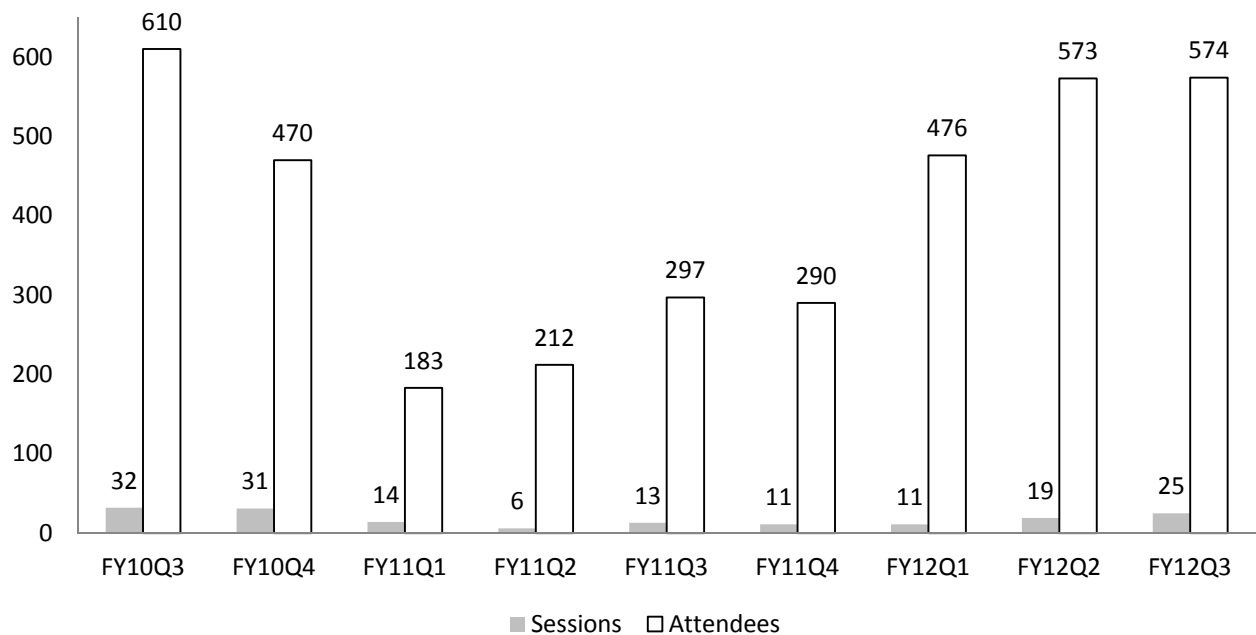
NOTES:

1. The total represented is the total bridge funding distribution less returned funds
2. Does not include awards currently in extension
3. Average

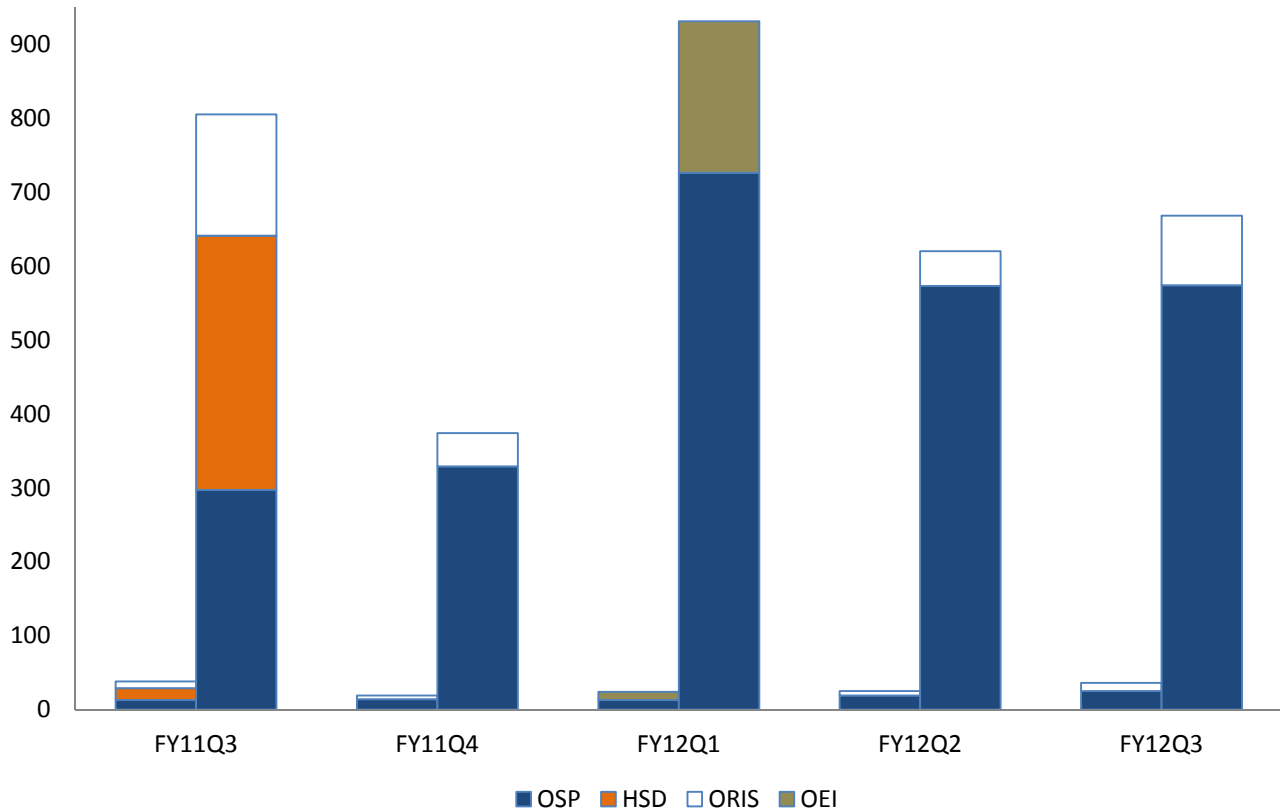
Trainings and Outreach

Unit	Session Title	Sessions Within the Last 3 Months	Total Attendees Within the Last 3 Months
OSP/GCA	Introduction to Research Administration	3	51
OSP	Grants.gov: The Basics	1	15
OSP	Managing Research Administration Files	1	6
OSP/ Internal Audit	What's Audit Got to Do With It?	2	54
OSP	Contracts Gone Wild!	3	67
OSP	Nuts & Bolts of Outgoing Subcontract Administration	1	22
OSP/GCA	Post Award Financial: Processes, Offices & Best Practices	1	26
OSP/MAA/Internal Audit	Faculty Grants Management – In Person	1	49
OSP/MAA/Internal Audit	Faculty Grants Management – Online	1	71
OSP+	Faculty Brown Bag Sessions	5	112
OSP	Hot to Prepare A Basic Budget	2	41
OSP	Export Compliance at UW	1	15
OSP/GCA/MAA	Cost Share Essentials	1	22
OSP	Research Administration Overview – Rehab Medicine at Harborview	1	23
OSP	Submitting Great Proposals	1	10
ORIS	SAGE 101	4	42
ORIS	SAGE 101 for POD	1	9
ORIS	SPAERC Read-Only	1	3
ORIS	SAGE 102: Grant Runner	2	18
ORIS	SAGE Budget	3	22

OSP Campus Trainings



External Trainings and Outreach and Attendees FY11Q3 - FY12Q3



Guidance, Training and Outreach - Development & Updating

Unit	Name	Status	Description
OSP/ GCA	Post Award Financial: Processes, Offices and Best Practices	Training: revision	Revisions based on participant and trainer feedback.
OSP	Faculty Brown Bag Series – Track I and II	Training: supported	Two brown bag sessions are scheduled each month. Coordinate with speakers, communication to new faculty and MRAM.
OSP	Nuts & Bolts of Outgoing Subcontract Administration	Training: revision	Revamped PPT for better flow and updated processes & tools
ORIS	SAGE Budget	Training: revision	Created new course and started monthly offering.
ORIS	SAGE 102: Grant Runner	Training: revision	Created new course and started monthly offering.
ORIS	SPAERC for OSP	Training: revision	Created new course, offered first course for new OSP staff.
HSD	Training system update	Training: revision	Revising training system.
OEI	SABP meeting Presentation	14	OEI/campus improvement update
OEI	ITHS: Collaboration with unit	2-3/meeting	Development of online training
OEI	Applied Physics Lab: 5 facilitated meetings	2 – 12 attendees each 3 – 7 attendees each	Strategy planning
OEI	School of Nursing: 5 facilitated meetings	6-8 attendees per meeting	Shared governance & decision-making
OEI	Global Health: 2 facilitated meetings	1 – 5 attendees each 1 -10 attendees each	Process improvement
OEI	EH&S: 7 facilitated meetings	5 -7 attendees each 1 – 22 attendees 1 – all staff retreat - 65 attendees	Process improvement
OEI	Health Sciences Administration: 3 facilitated meetings	7-9 attendees each	Shared services