

## Biennium Closing 2013-2015 Timeline as of 4/08/2015

<u>Date</u>	<u>Event</u>
2/05/2015	Current Biennium Index records copied into Future Biennium (Completed).
6/02/2015	Run Capital Re-Class Extract job (JAM40280) after JAMDAYEOM1.
6/05/2015	Preview the Capital Re-Class Extract File thru AM11409 during the day. Post Capital Re-Class Extract File, interfacing with JAMDAYEOM3. Run the New Plant Report (JAM40232) after JAMDAYEOM3.
6/08 – 6/23	Run Interest Income Allocation (JAMANN2). Then after approval Post the transactions into a JAMDAY1 run. NOTE: Actual dates to be determined.
7/07/2015	<b>Phase-1:</b> Actual Biennium Crossover (JAMBICDY1, JAMBIC1, JAM01000, JAMBICDY2, JAMBICDY3, JAMBICDY4, JAMBICDY5, JAMBICDY6, JAMBICDY7, JAMBIC2, Databridge (BCP) entire FINDB01 to EDW. Then JAMBICDY8, JAMBICDY9, & JAMDWRCMD).
7/08/2015	First run of <b>Month-25</b> (JAMOLDDAYFIRST).
7/09/2015	<b>Month-01</b> processing (JAMDAY1). Also runs on 6/13, 6/15, 6/20, 6/23, & 6/28.
7/10 – 7/31	<b>Month-25</b> processing (JAMOLDDAY1), Except for Month-01 runs above.
7/22/2015	LAST day for Month-25 campus department entries via FISTRANS. <b>Phase-2:</b> Xover AP => TC46's (JAMBIC4 & JAMBICDY10) after JAMOLDDAY1. NOTE: After Phase-2, PAS is done with its Biennium Closing Process.
7/24/2015	Dean's Day Processing. After Dean's Day only Central Office entries allowed.
7/31/2015	<b>Final Closing of Month-25</b> (JAMOLDDAYEOM). Old Biennium Month/End Process (JAMOLDMONSTATE, JAMOLDMON1, JAMOLDMON2, JAMOLDMON3, & JAMOLDMON4). Annual Reports (JAMANNFIRST, JAMANN1, JAMANN3, JAM40029, JAM48760, & JAM48780).
8/03/2015	<b>Phase-3:</b> After JAMDAY1. Grant Balances => TC20's (JAMBIC5, JAMBIC9, JAMBIC10, JAMBICDY11, & JAMBICBAR).
8/11/2015	<b>Phase-4A:</b> After JAMDAY1. Create Close Tables and Final Xover Extracts (JAM10300, JAM10301, JAM50275, JAMBIC7, & JAMBIC8). No Postings.
8/27/2015	<b>Phase-4B:</b> After JAMDAY1. Post Final Crossover extract data (JAMBIC9, JAMBIC10, JAMBICDY12, & JAMBICBAR).
8/28/2015	Post TC21's & TC32's, interfacing with JAMDAY1.
8/31/2015	Post TC32 Loans, interfacing with JAMDAY1.

# Biennium Closing 2013-2015 Timeline as of 4/08/2015

## FAS BIENNIUM XOVER PHASE I on 7/7/2015

7/7/2015  
3:00P.M.

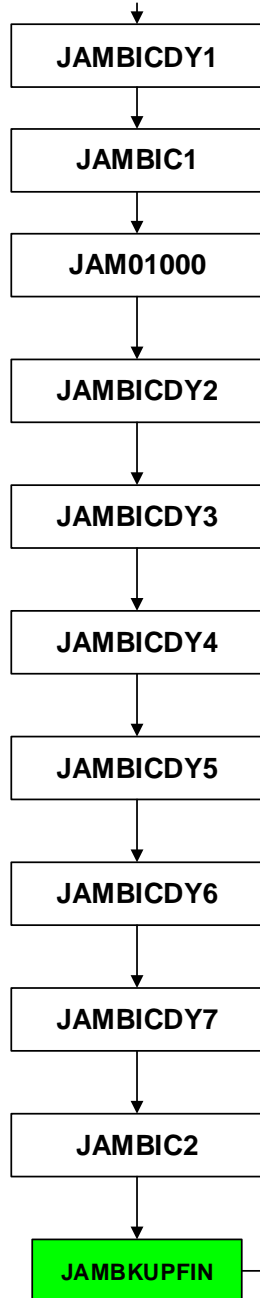
JAMFINQUIT

JPSPASQUIT

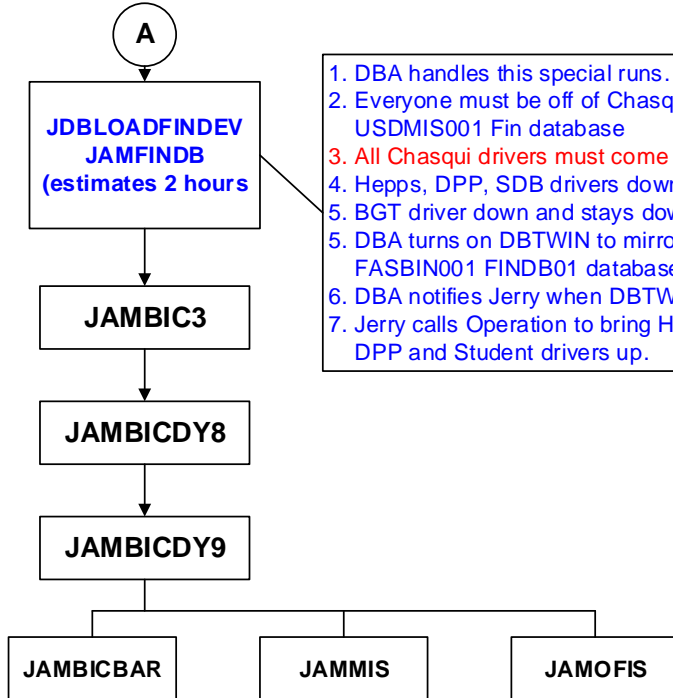
JAMBKUPFIN

- ✓ FIN & PAS drivers down for the day.
- ✓ DBTWIN/DATABRIDGE process comes down. Mirror is broken.
- ✓ HEPPS, DPP, SDB, BGT, TIME & COM drivers are set up to use the mirrored FINDB on FASBIN001 and remain up.
- ✓ (The HEPPS, DPP, SDB & BGT drivers will be down for 15 min at approx 6pm when DBTWIN resumes and mirroring is reestablished on FASBIN001.

Start Here



JAMBICDY1  
thru  
JAMBICDY7  
programmer  
verifies data  
at the WAIT  
statement  
before  
proceeding



1. DBA handles this special runs.
2. Everyone must be off of Chasqui USDMIS001 Fin database
3. All Chasqui drivers must come down
4. Hepps, DPP, SDB drivers down for 15 min
5. BGT driver down and stays down
5. DBA turns on DBTWIN to mirror FINDB01 to FASBIN001 FINDB01 database
6. DBA notifies Jerry when DBTWIN is completed
7. Jerry calls Operation to bring HEPPS, DPP and Student drivers up.

FAS programmer:

- calls Operation to requests the FIN driver up.
- reviews FIN screens to verify new index data.

- If results are acceptable, programmer will request to bring FIN driver down and request that the "hold" on the Database Backup jobs be released so that they can run.

JAMBKUPFIN

JAMBKUPMIS

JAMBKUPFAS

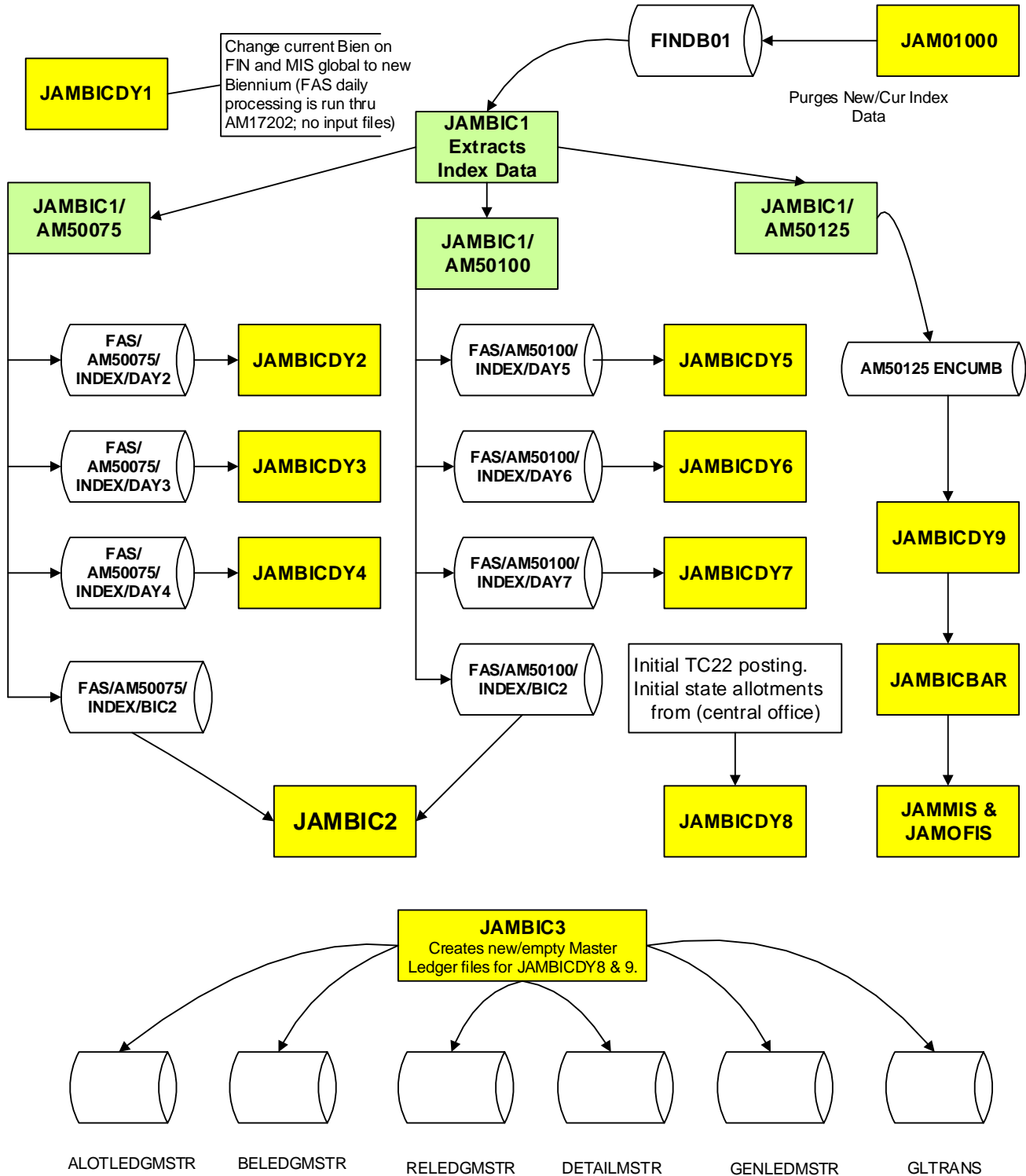
JAMDWRCMD

Data Warehouse index  
load must be complete.  
Look for job step email  
from DW before starting.

# Biennium Closing 2013-2015 Timeline as of 4/08/2015

## PHASE 1 - DIAGRAM (DAY1 - DAY9)

**JOB SEQUENCE:** jambicdy1, jambic1, jam01000,jambicdy2, jambicdy3, jambicdy4, jambicdy5, jambicdy6, jambicdy7, jambic2, jambic3, jambicdy8, jambicdy9, jamofis, jammis, jambicbar, jambkupmis

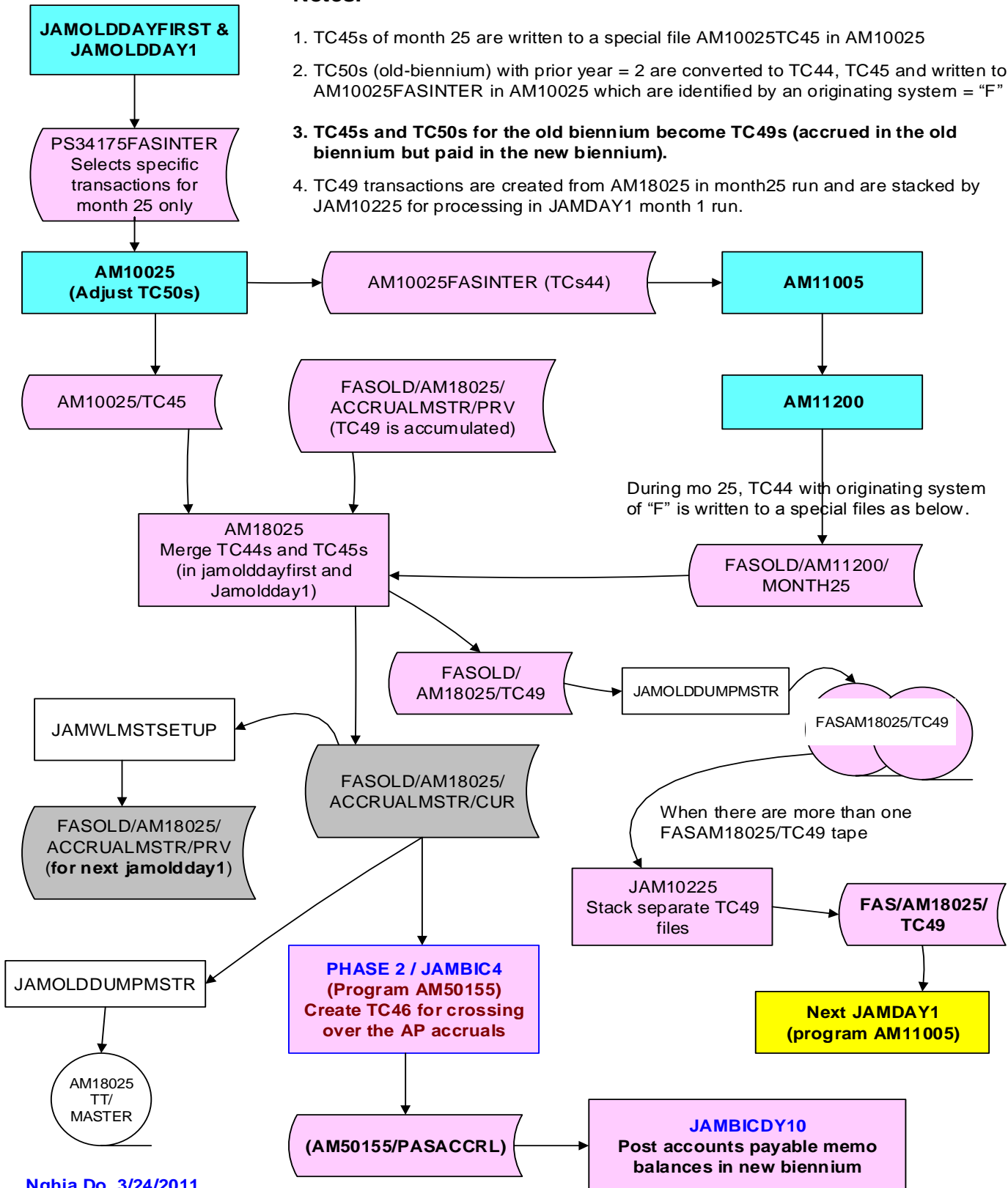


# Biennium Closing 2013-2015 Timeline as of 4/08/2015

## Some explanation on PAS/FAS transaction during Biennium Closing

### Notes:

1. TC45s of month 25 are written to a special file AM10025TC45 in AM10025
2. TC50s (old-biennium) with prior year = 2 are converted to TC44, TC45 and written to AM10025FASINTER in AM10025 which are identified by an originating system = "F"
3. **TC45s and TC50s for the old biennium become TC49s (accrued in the old biennium but paid in the new biennium).**
4. TC49 transactions are created from AM18025 in month25 run and are stacked by JAM10225 for processing in JAMDAY1 month 1 run.



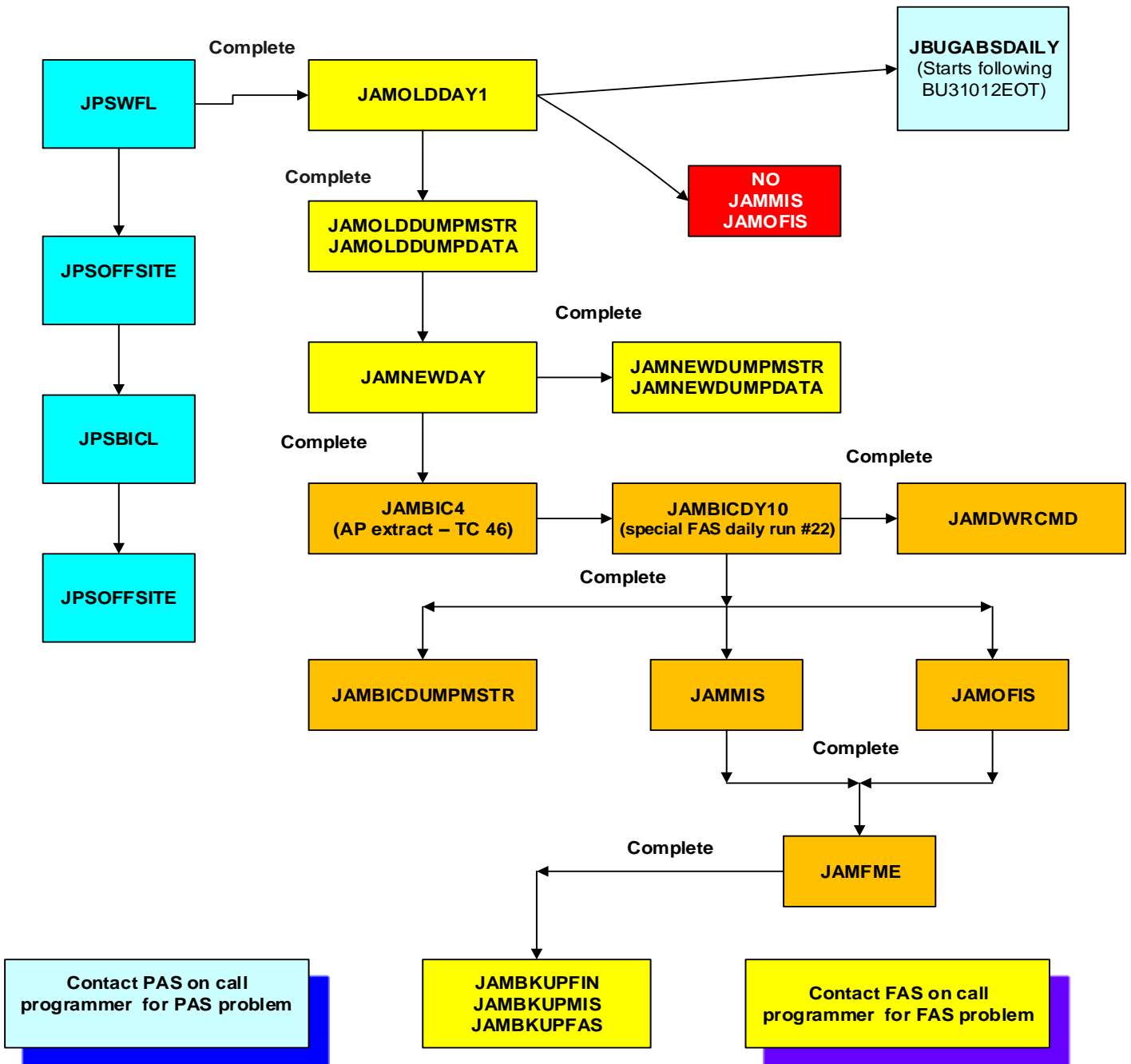
# Biennium Closing 2013-2015 Timeline as of 4/08/2015

## PAS and FAS PROCESSING ON 7/22/2015 - BIENNIUM CLOSING PHASE 2

**Note:** FASAM10170/FASOLDPAYLOAD (pack) interfaces JAMOLDDAY1 on 7/21/2015. If there are any rejects, Departments can fix them on 7/22/2015 (the last day for Campus Users to submit Month-25 Trans.

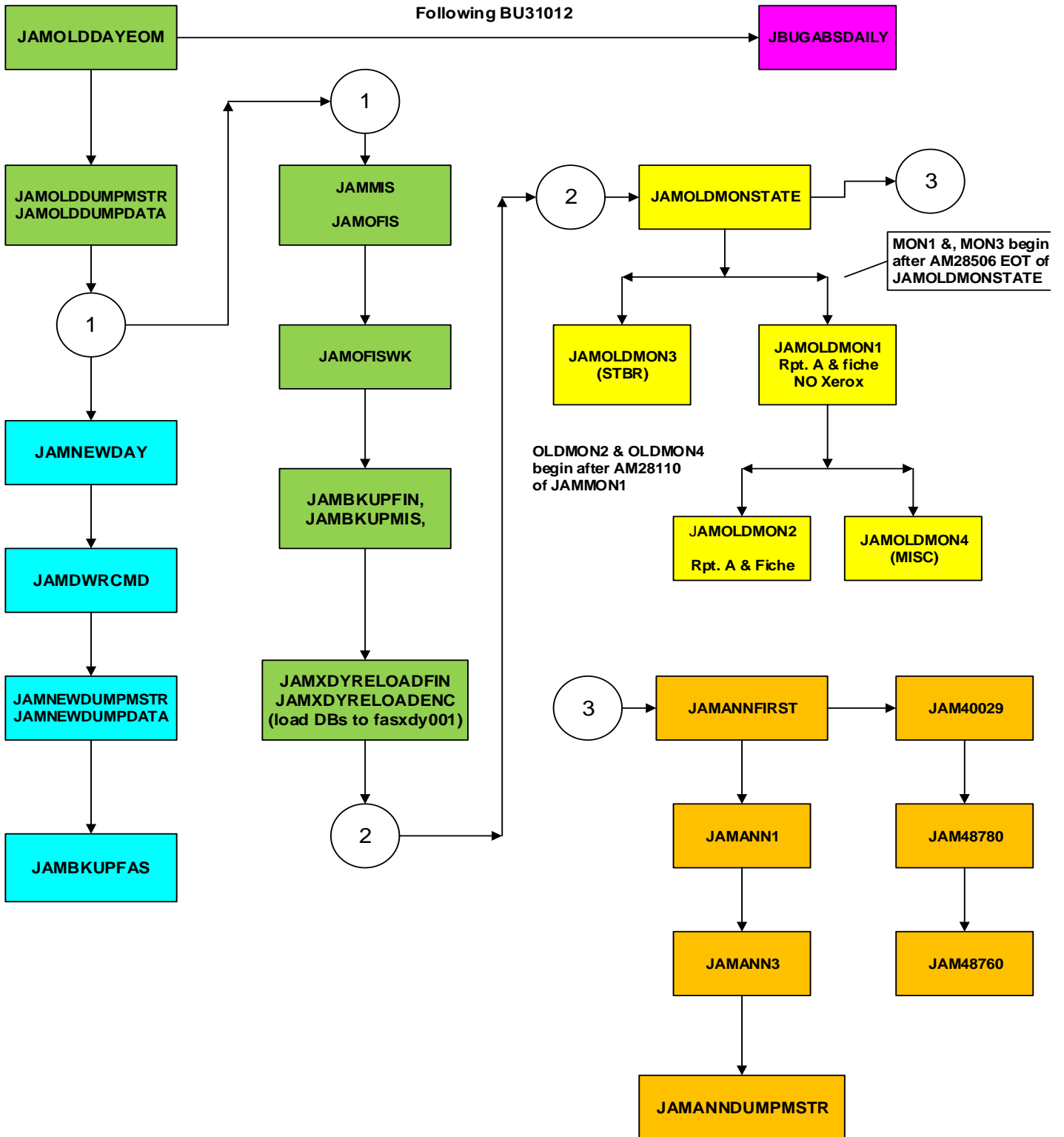
**START JPSWFL ON 7/22/15 AFTER THE FIN AND PAS DRIVERS COME DOWN AT 6:30P.M..**  
 The AH parameter in JPSWFL is now Obsolete as JAMOLDDAY1 waits for JPSWFL-EOJ

APECS sets up to start JAMOLDDAY1 after JPSWFL



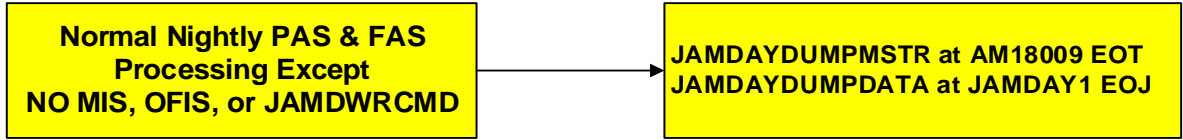
# Biennium Closing 2013-2015 Timeline as of 4/08/2015

## FAS EOM-25 and ANNUAL Processing July 31, 2015

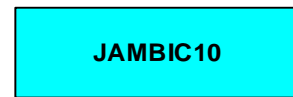
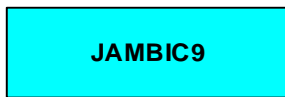


# Biennium Closing 2013-2015 Timeline as of 4/08/2015

## FAS BIENNIUM CLOSING - PHASE III on 8/3/2015

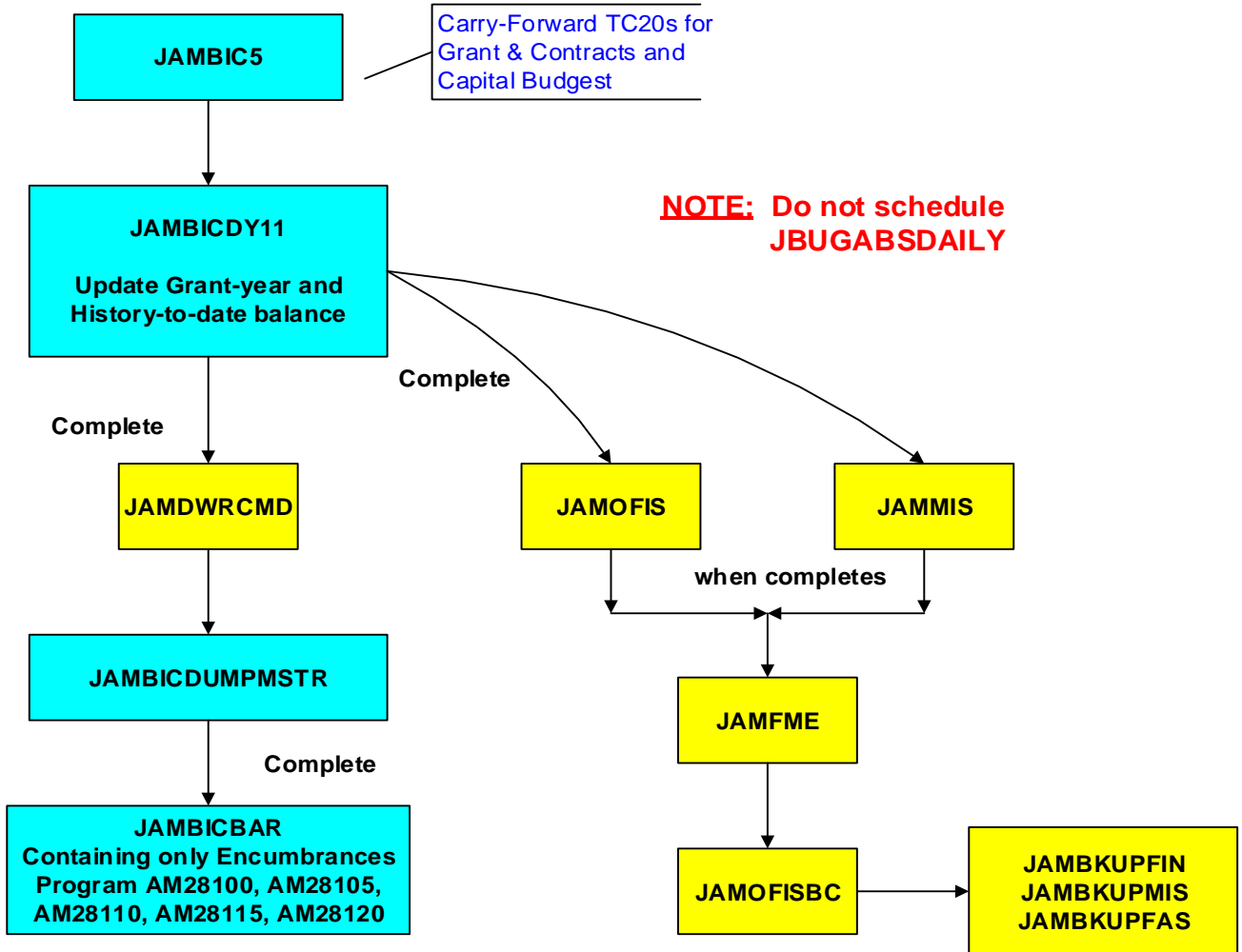


After the FAS normal nightly process completes



Creates empty FASBIC/AM16102/DETAILMSTR/PRV file for JAMBCDY11 and JAMBICBAR. Header date must = lastrun date of FINDB01

Copy DETAIL master tape for the next JAMDAY1. New header date = lastrun date of FINDB01

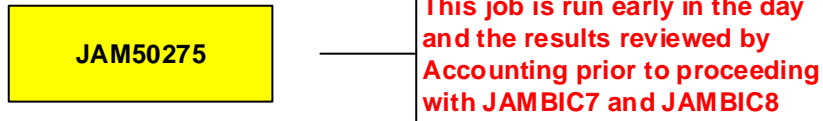
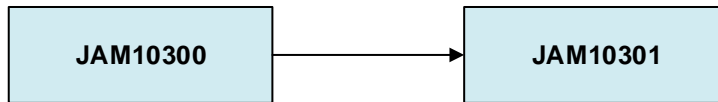


# Biennium Closing 2013-2015 Timeline as of 4/08/2015

## FAS BIENNIUM CLOSING PHASE 4 - A

On 8/11/2015

Programmer runs these jobs at the daytime on  
on 8/11/15



The following jobs below can run at anytime following the review and approval of the JAM50275 Closetables. They can run at the same time as, and do not affect, any other normal FAS nightly processing.



**\* IMPORTANT NOTE:** Calculations in JAMBIC7 & JAMBIC8 that result in amounts > 1 billion are automatically split into multiple transactions. However, in some cases, amounts that feed into the calculations in JAMBIC7 have already been truncated at the source (B/E & Rev Ledgers). In these cases the missing billions must be manually created and fed into FAS in amounts < 1billion. These amounts can be identified by running queries against the EDW Financial Summary Data Mart for the prior biennium totals. For the crossover to the 2011 biennium, the following budgets were truncated at the source:

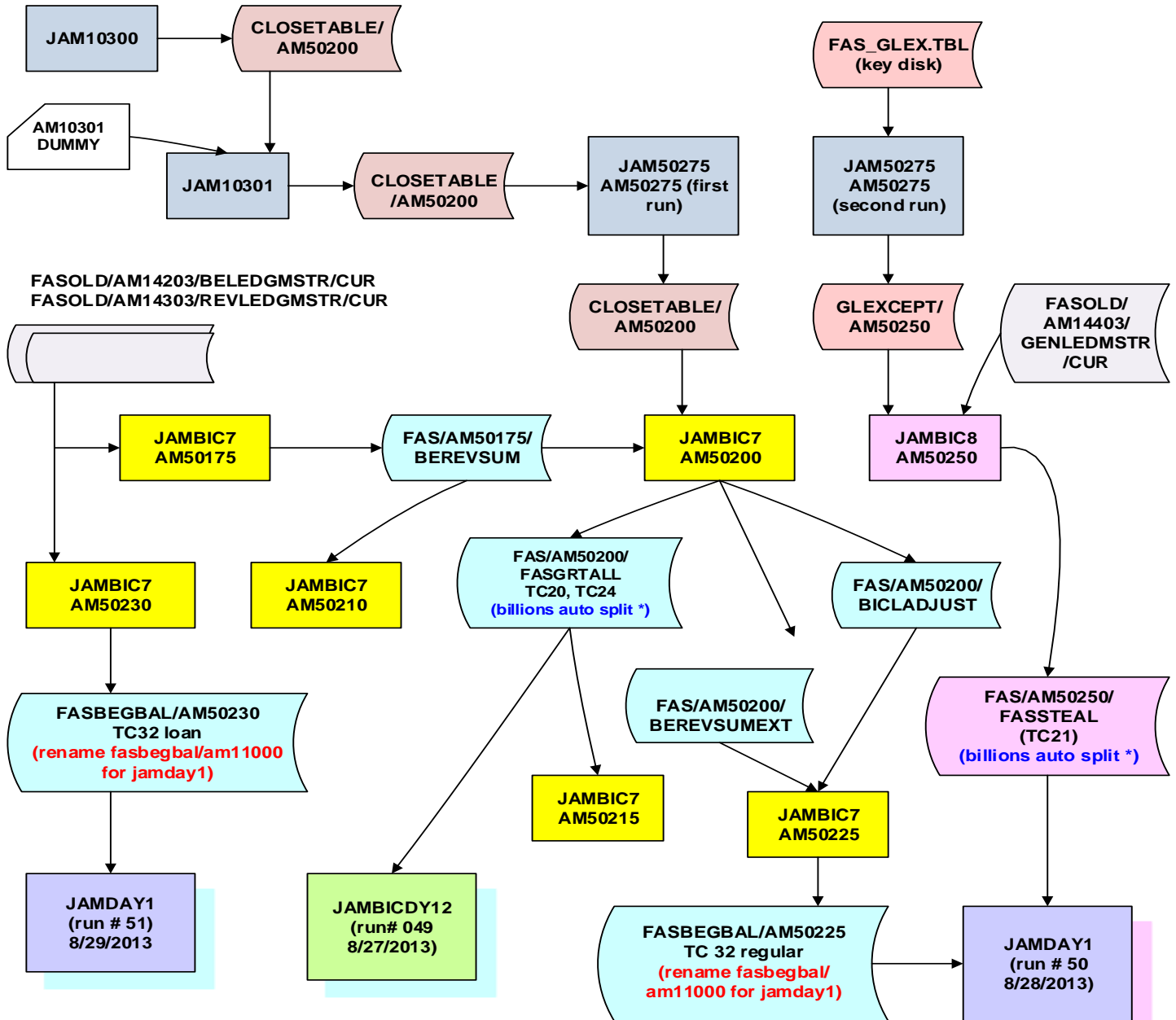
- 39-5070 total budget amount for object code 40 (prior biennium unexpended budget amount)
- 12-0996 total revenue for revenue code 9788 (beginning fund balance)
- 12-1571 total revenue for revenue code 9788 (beginning fund balance)
- 31-4030 total revenue for revenue code 9715 (recoveries exp-current)



# Biennium Closing 2013-2015 Timeline as of 4/08/2015

## FAS BIENNIUM CLOSING PHASE 4 – A/B

Detail process PHASE 4-A on 8/11 and PHASE 4-B on 8/27/2015



\* NOTE: Calculations that result in amounts > 1 billion are automatically split into multiple transactions. However, in some cases, amounts that feed into the calculations have already been truncated at the source (B/E & Rev Ledgers). In these cases the missing billions must be manually created and fed into FAS in amounts < 1billion.

8/10/2015: Programmer runs the preview of JAM10300, AM10301 and JAM50275 using the FAS\_GLEX.TBL from key disk. This file will be created sooner by GAO (contact Belinda)

8/11/2015: Programmer runs production JAM10300, JAM10301 and JAM50275

8/11/2015: schedule JAMBIC7 and JAMBIC8 as usual