



# Integrating Science, Nature, and Community Partnerships at the University of Washington, Bothell





# Science & Nature on Campus

The Built Environment

North Creek

Campus Wetlands





# An Island of Nature





**It wasn't always this way !**





# The Truly Ranch: pasture & a straightened stream





# Creating a Wetland

1998





# Creating a New Stream Channel

1998





# Greening the Wetland

1999





# Three Years after Completion





# Six Years after Completion

2006





# Hard Work & Continued Care





# A Living Laboratory







**Biology**

**Hands-on  
Education  
across the  
natural  
sciences**



**Hydrology**



**Ecology**



**Chemistry**



# A Place where Students become Teachers



## Wetland Docent Training Program





# Connecting the community to UWB through nature





# SEED : Summer Environmental Education Days

Faculty from Education & Natural Sciences partner in a summer program for K – 12 teachers



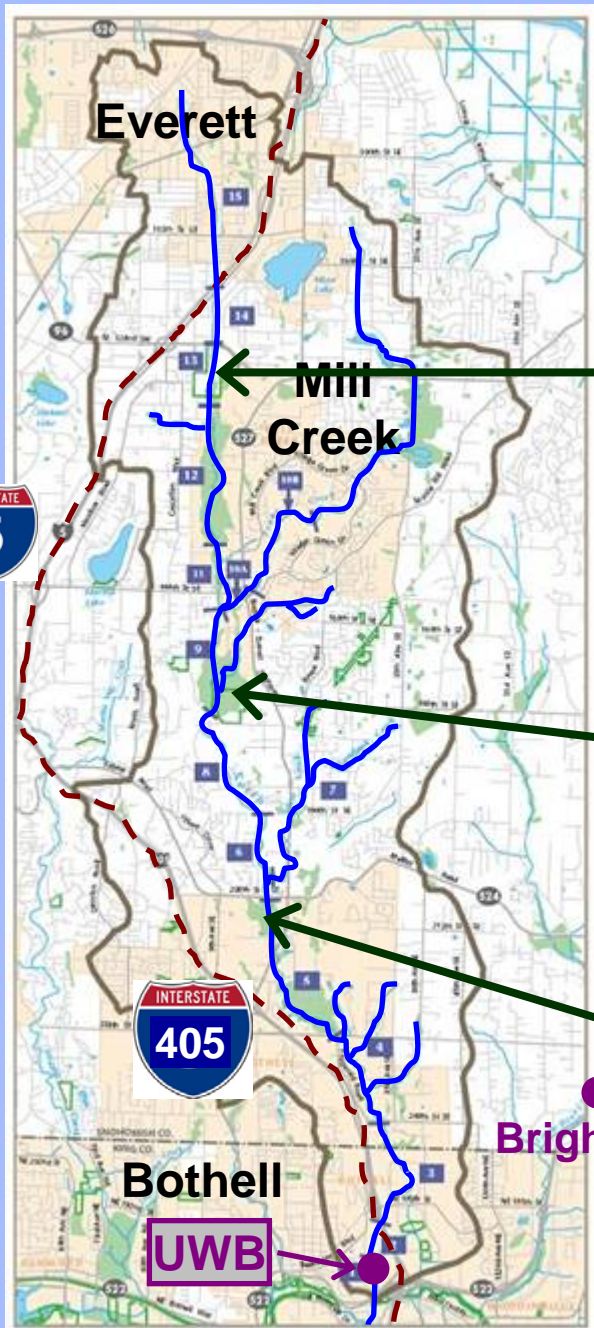


# Beyond our Campus: Wetlands in Context





# Can we help to maintain ecological integrity in an urbanizing watershed?



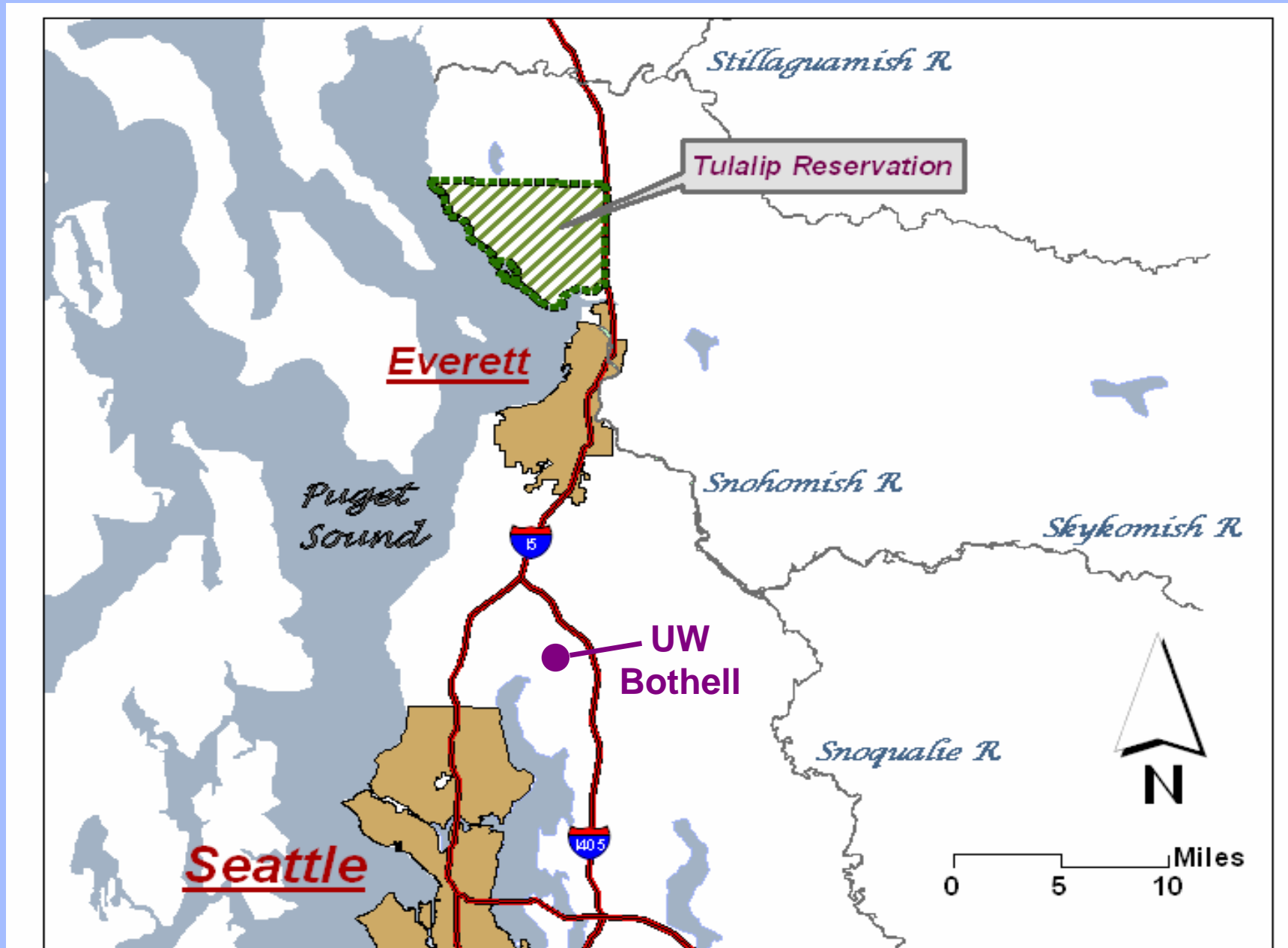
Bothell

UWB

Brightwater



# Reaching Further: The Tulalip Tribes



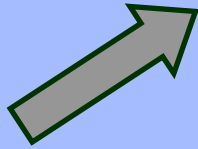


# Faculty – student research on culturally-important natural resources

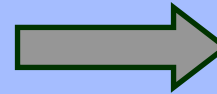




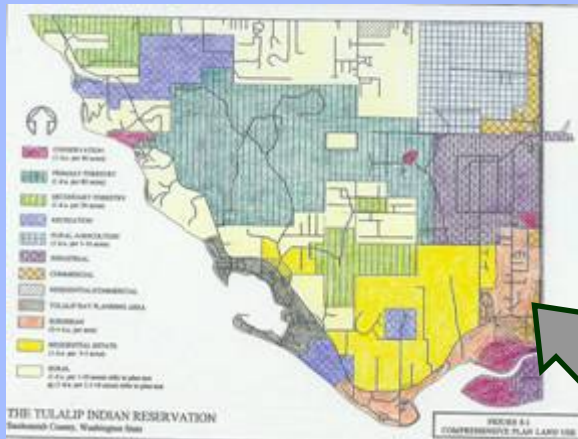
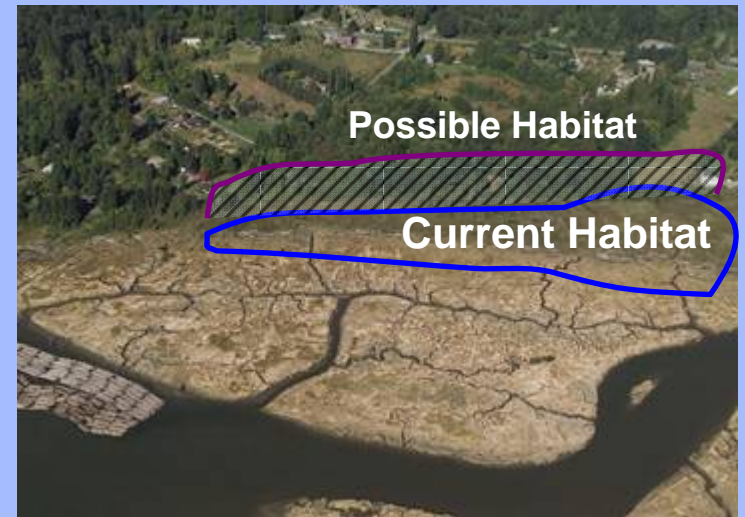
# Linking Science & Technology to Cultural Sustainability



Cultural information



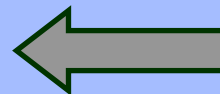
Ecological information



Policy & Planning



Technology







Engaging the Region:

# The UW Restoration Ecology Network

COMMUNITY COLLABORATIONS

30 JUNE 2006 VOL 312 SCIENCE [www.sciencemag.org](http://www.sciencemag.org)

*Published by AAAS*

## Collaborative Ecological Restoration

Warren Gold,<sup>1\*</sup> Kern Ewing,<sup>2</sup> John Banks,<sup>4</sup> Martha Groom,<sup>1</sup> Tom Hinckley,<sup>2</sup>  
David Secord,<sup>3</sup> Daniela Shebitz<sup>2</sup>

Faculty and students at the University of Washington forge interdisciplinary partnerships with the regional community to restore damaged habitats.







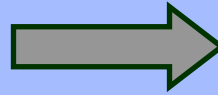
UNIVERSITY OF WASHINGTON  
Restoration Ecology Network

## Engaging UW with communities across the region





## Using natural sciences to restore damaged landscapes



## Using social sciences to build community stewardship







# Science & Technology into the Future at UW Bothell

## Building on a strong base of:

- World-class fundamental science
- Bridges between sciences, technology & other disciplines
  - tackling complex problems
- Connections to our community
- Commitment to thoughtful & engaged student learning

