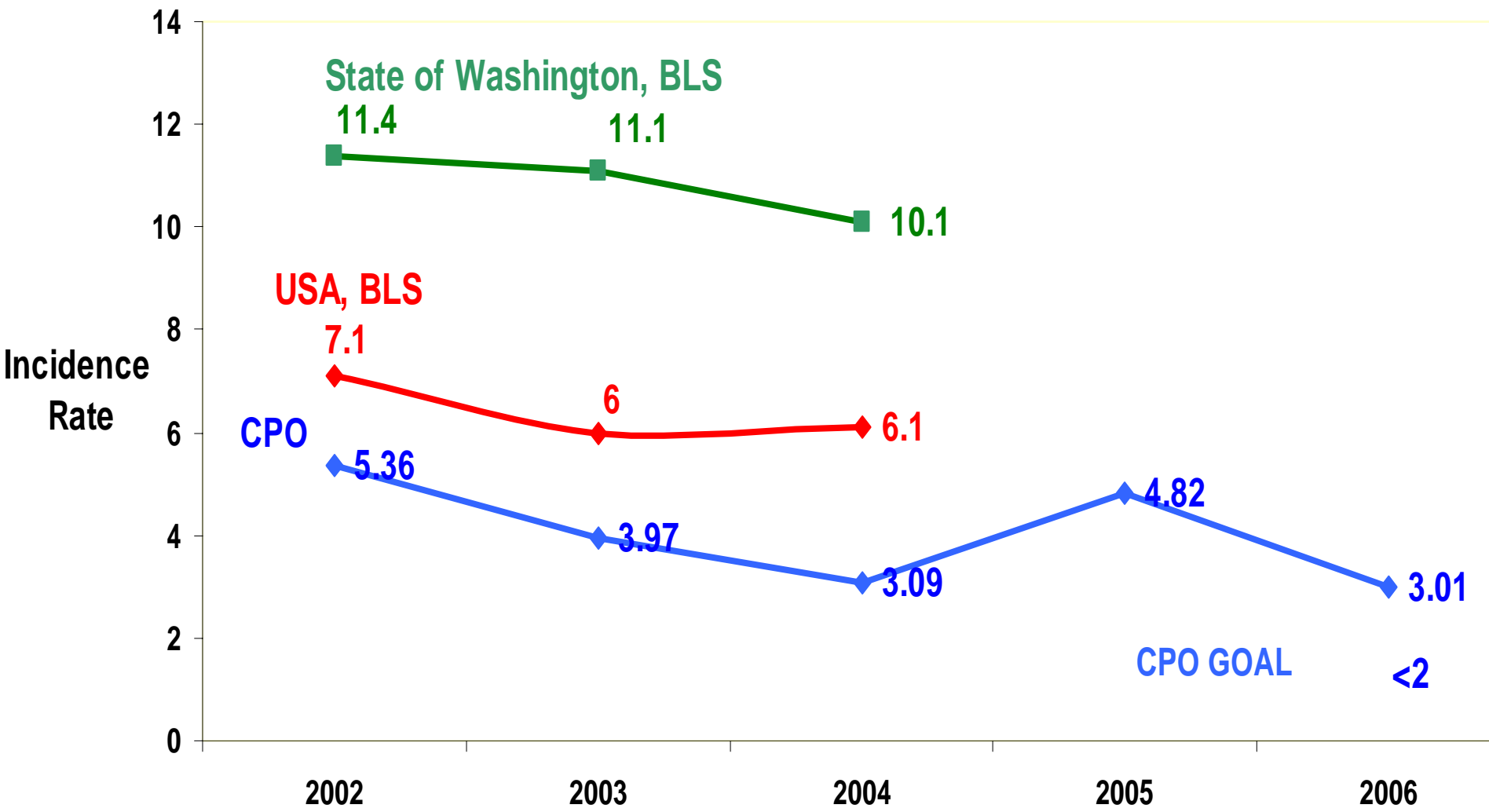




Capital Projects Office Status Report March 2006 - September 2006

TRIR Calendar Year



Project Statistics

- ▶ 20 Approved Major Projects (-5)
- ▶ Budgets of Active Projects \$1.1 Billion
- ▶ Five Major Project Closed Out (+3)
- ▶ 300 Active Special Projects (+5)
- ▶ Special Projects Budgets \$168 Million (-30)
- ▶ 75 Special Projects Closed Out (+12) (\$32M)

Construction Conditions

- ▶ Local 302 Strike
 - Architecture
 - Guggenheim
 - Harborview
 - Educational Outreach
 - Stevens Way
- ▶ Labor
 - Laborer Negotiations 2007
 - Availability
- ▶ Material & Equipment Availability
- ▶ Contractors & Subcontractors

Cost Issues

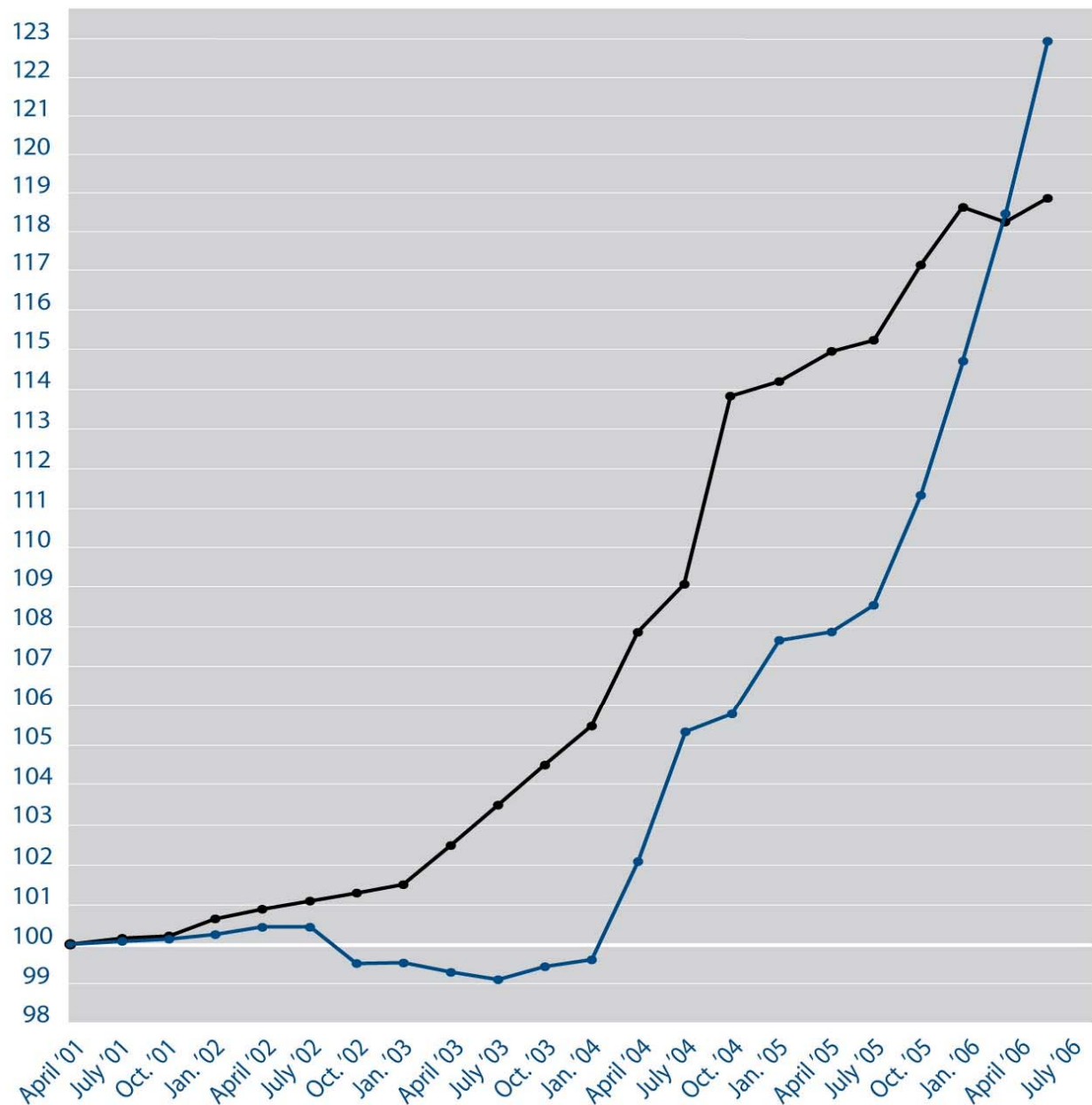
- ▶ 2001 - 2006 Escalation 19% - 23%
- ▶ 2006 Forecast Escalation 10%
- ▶ Market Condition
- ▶ Forecast

Construction Cost Index Comparison

	Rider Hunt Seattle	ENR
July 2001	100.11	100.14
October 2001	100.20	100.22
January 2002	100.33	100.65
April 2002	100.45	100.87
July 2002	100.45	101.09
October 2002	99.52	101.30
January 2003	99.58	101.52
April 2003	99.34	102.50
July 2003	99.12	103.47
October 2003	99.42	104.48
January 2004	99.65	105.48
April 2004	102.12	107.84
July 2004	105.37	109.04
October 2004	105.80	113.81
January 2005	107.66	114.19
April 2005	107.88	114.95
July 2005	108.56	115.22
October 2005	111.36	117.12
January 2006	114.65	118.64
April 2006	118.44	118.24
July 2006	122.95	118.86

Base index April 2001 = 100
Recalibrated April 2005

— Rider Hunt Seattle Construction Cost Index
— ENR National Construction Cost Index



CPO - Sustainability

Certified Silver 

Registered

UW Tacoma 2B 

Nordheim Court

Merrill Hall 

R & T Building

Guggenheim

Architecture

Educational

Outreach

Playhouse

Savery Hall

Clark Hall

UWT Hall

The Capital Projects Office employs 25 of the 50
LEED accredited professionals at UW

Major Projects Closed

	Budget / Actual \$M	F'cst / In Use
Allen Center	70 / 64.5 ↑	9/03 - 10/03 ■
E-Power II	6.7 / 5.7 ↑	9/05 - 12/05 ↓
Terry Lander	8.0 / 8.2 ↓	9/04 - 9/04 ■
IMA Expansion	43.4 / 43.4 ■	8/03 - 11/03 ↓
Merrill Hall	7.1 / 8.3 ↓	12/05 - 1/06 ■

Emerging Projects

- ▶ UWMC Expansion Project
- ▶ Business School Phase 2

Major Projects in Closeout

	Budget/Fcst \$M	Use Date / F'cst
UWMC Cardiac/Emerg.	7.2 / 6.9 ↑	11/05 - 10/05 ↑
Tacoma Phase 2B	44.4 / 44.4 ■	10/03 - 1/04 ↓
Biochemistry J-Wing	8.5 / 8.2 ↑	5/06 - 5/06 ■
Golf Driving Range	8.0 / 1.5	8/04 - cancelled
Regional Heart	9.8 / 10.1 ↓	12/05 - 4/06 ↓
Research and Technology	29.9 / 29.8 ■	9/05 - 3/06 ↓
Johnson Hall	55.3 / 55.4 ■	10/05 - 12/05 ↓
Wm. Foege Building (Bio-E)	150 / 150 ■	3/06 - 7/06 ↓
UWT Garage	7.5 / 7.5 ■	12/05 - 1/06 ■

Major Projects in Bid / Construction

	Budget/Fcst \$M	Use Date / F'cst
Architecture Hall	24.5 / 24.5 ■	9/07 - 9/07 ■
Ed. Outreach	17.9 / 17.9 ■	2/07 - None
Guggenheim Hall	28.3 / 31.6 ↓	9/07 - 9/07 ■
Harborview Bond	294.6 / 294.6 ■	4/08 - 6/08 ↓ (IEB)
W. Campus Gar.	12.8 / 16.1 ↓	3/07 - None

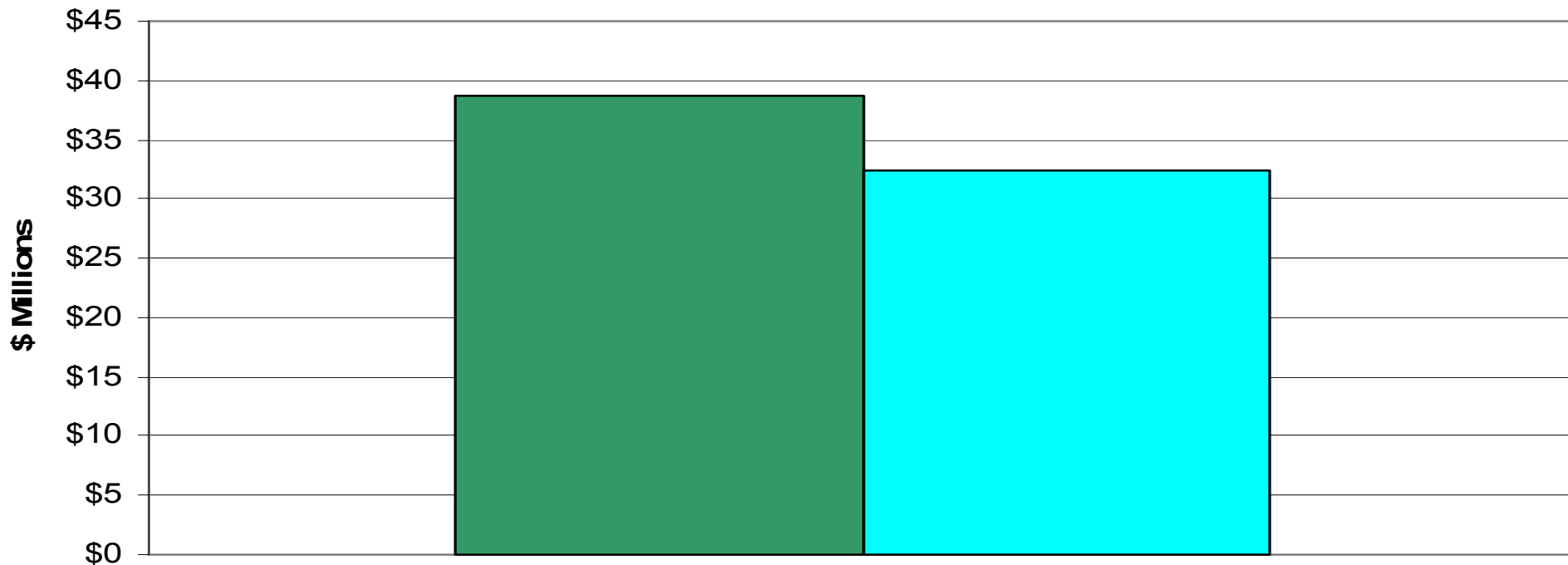
Major Projects in Design

	Budget/Fcst \$M		Use Date / F'cst
Clark Hall	18.1 / 18.1	■	3/09 - 3/09 ■
Playhouse	9.9 / 9.9	■	9/08 - 9/08 ■
UWT Hall	10.8 / 10.8	■	9/08 - 9/08 ■
Savery Hall	61.2 / 61.5	↓	7/09 - 7/09 ■
HSC H-Wing	18.2 / 18.2	■	9/08 - 10/08 ↓
Business School	80 / 80	■	9/10 - 9/10 ■

Special Project Closures

Closed Special Projects 3/06 - 9/06

Budget **Cost**



Number of Project Contracts Issued March 2006 - September 2006

	W/MBE	Others
Designers/Consultants	3	61
Contractors	4	36

UWT - ASSEMBLY HALL





EXISTING PACIFIC AVENUE STREETScape



PROPOSED PACIFIC AVENUE STREETSCAPE



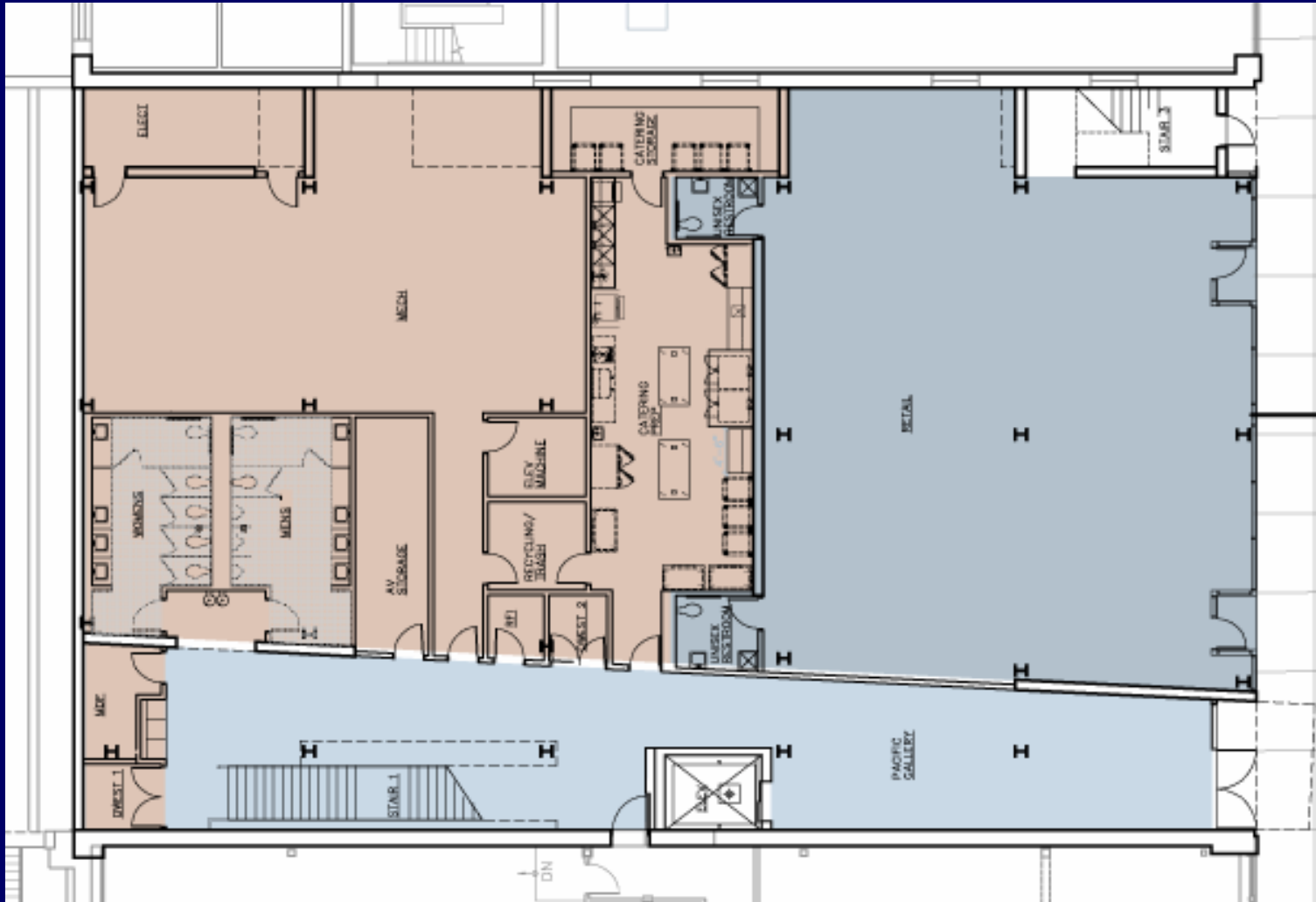
EXISTING CAMPUS STREETScape



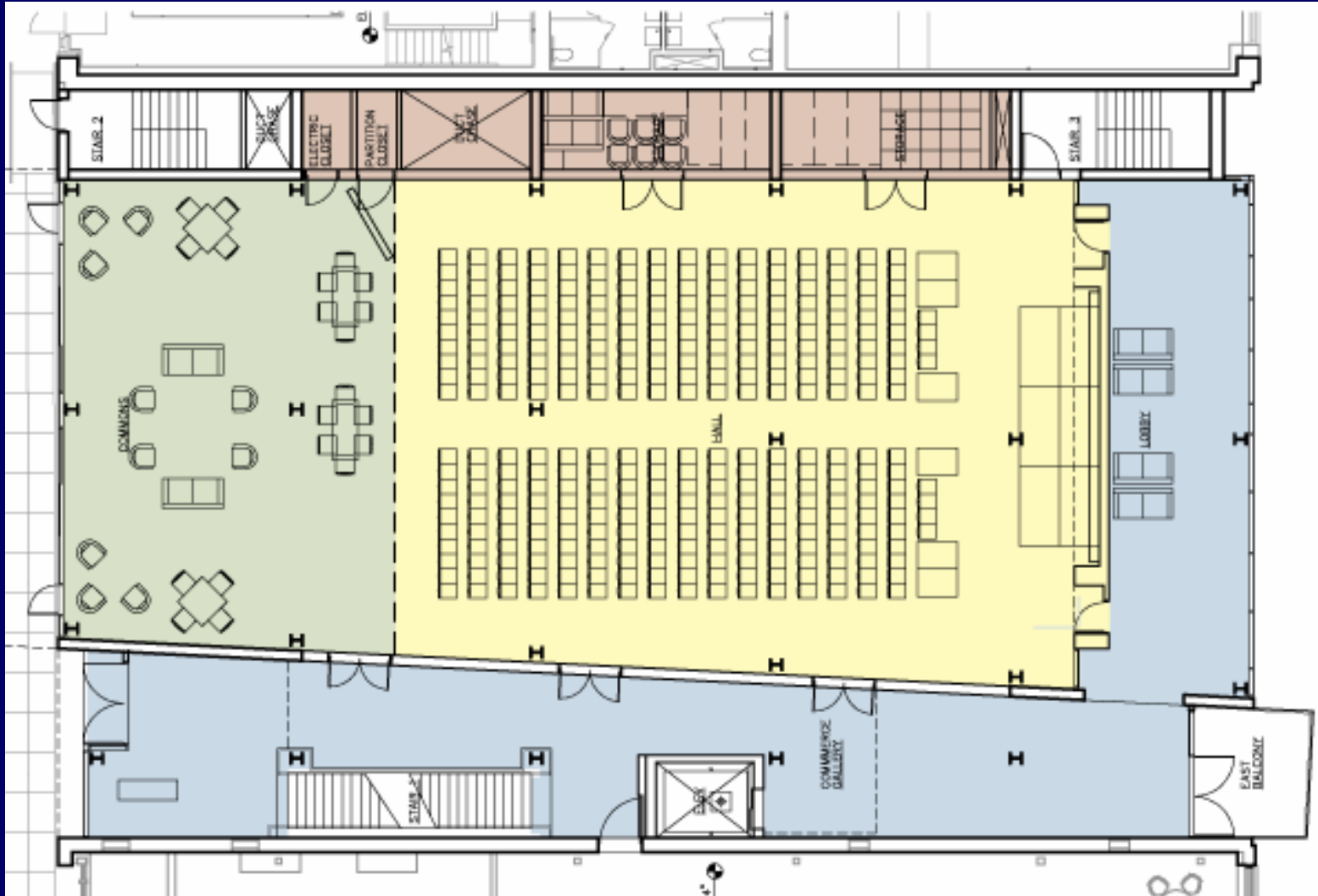
PROPOSED CAMPUS STREETScape



LEVEL ONE FLOOR PLAN



LEVEL TWO FLOOR PLAN



LEVEL THREE FLOOR PLAN

