

VII. STANDING COMMITTEE

C. Capital Assets Committee

Guggenheim Hall Renovation Schematic Design

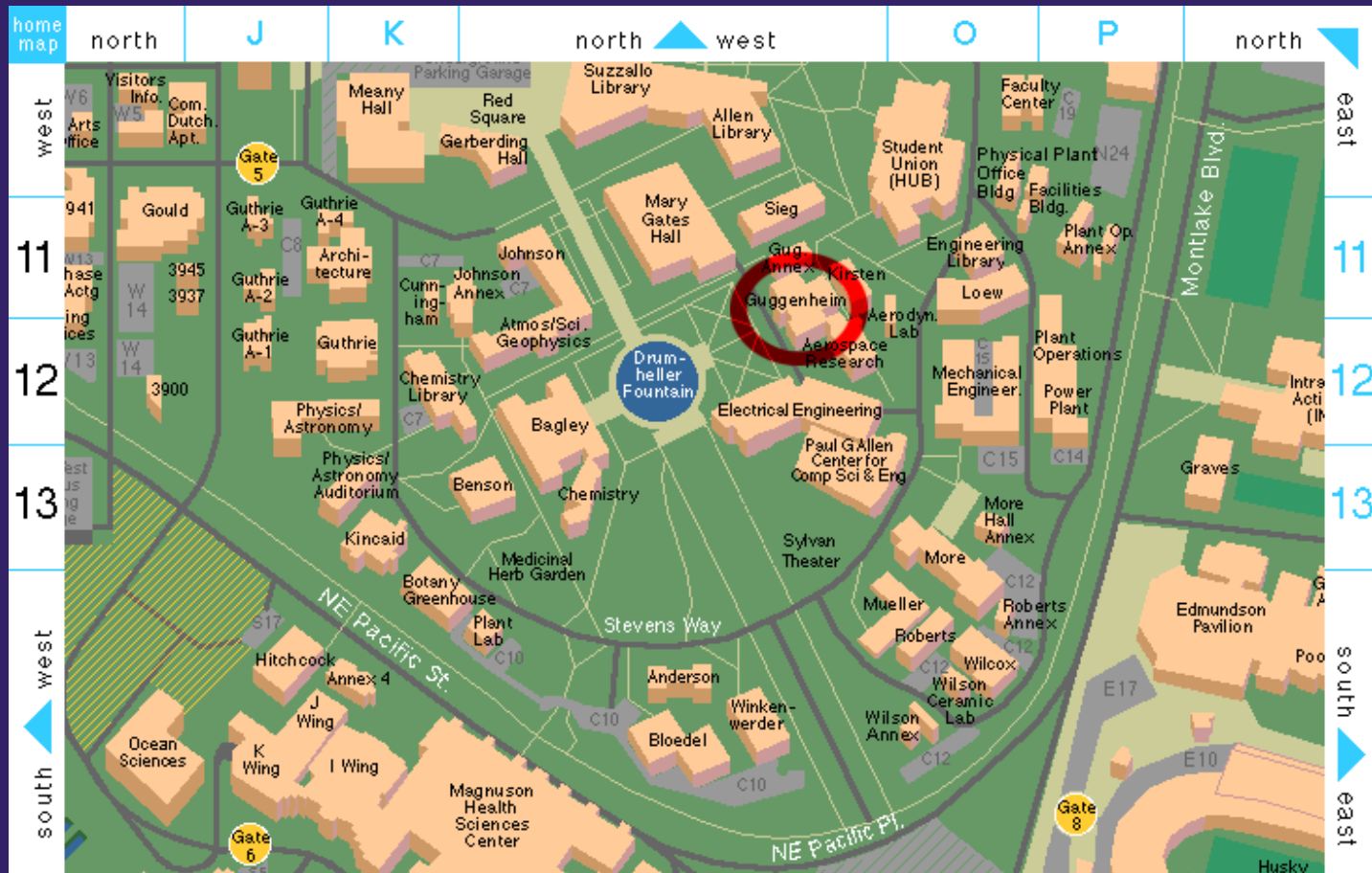
See attachment (Powerpoint presentation)

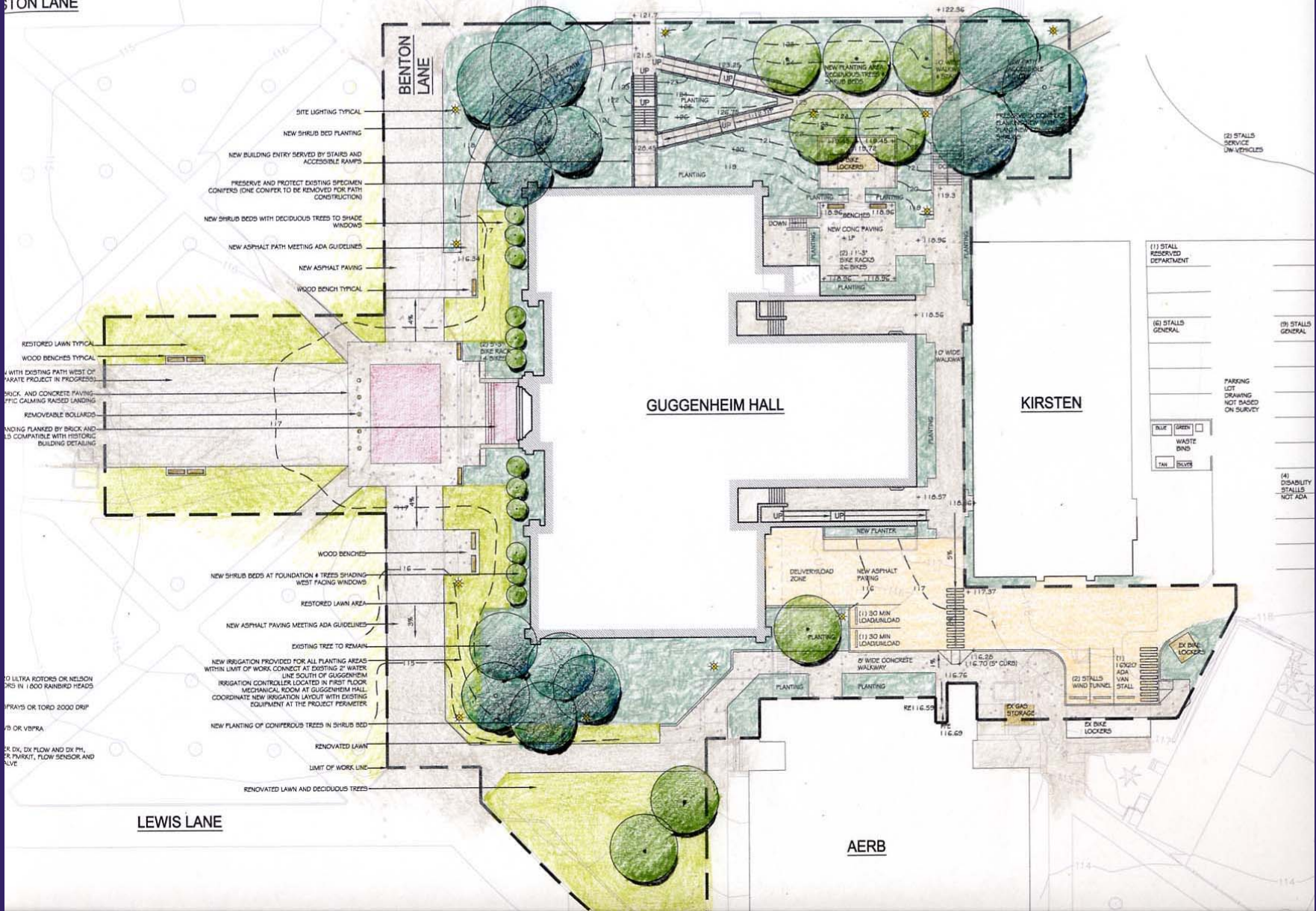


# Guggenheim Hall Renovation

# Regents Action Requested

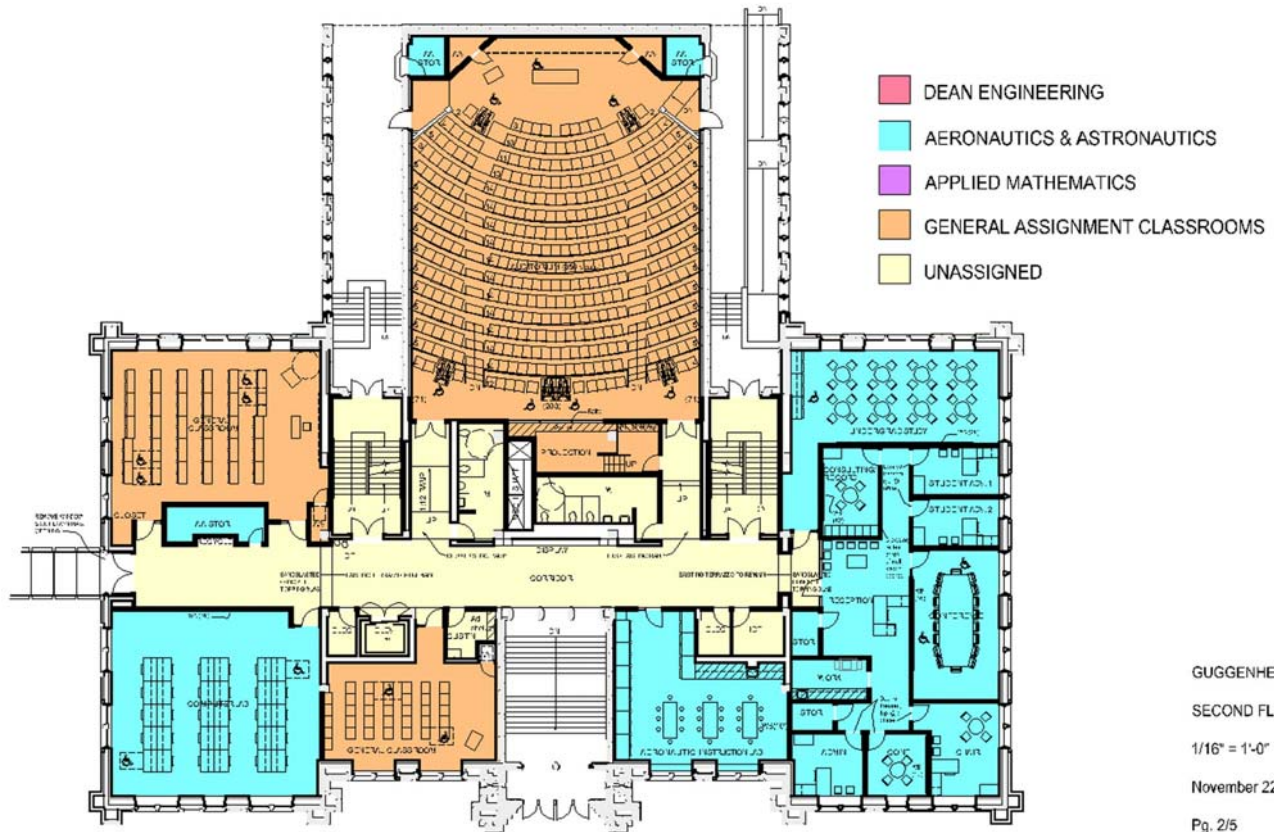
Information only  
Schematic Design Review





- SITE LIGHTING TYPICAL
- NEW SHRUB BED PLANTING
- NEW BUILDING ENTRY SERVED BY STAIRS AND ACCESSIBLE RAMPS
- PRESERVE AND PROTECT EXISTING SPECIMEN CONIFERS (ONE CONIFER TO BE REMOVED FOR PATH CONSTRUCTION)
- NEW SHRUB BEDS WITH DECIDUOUS TREES TO SHADE WINDOWS
- NEW ASPHALT PATH MEETING ADA GUIDELINES
- NEW ASPHALT PAVING
- WOOD BENCH TYPICAL
- RESTORED LAWN TYPICAL
- WOOD BENCHES TYPICAL
- NEW ASPHALT PAVING WEST OF EXISTING PATH WEST OF PRIVATE PROJECT IN PROGRESS
- BRICK AND CONCRETE PAVING
- TRAFFIC CALMING RAISED LANDING
- REMOVABLE BOLLARDS
- LANDING FLANKED BY BRICK AND CONCRETE COMPATIBLE WITH HISTORIC BUILDING DETAILING
- WOOD BENCHES
- NEW SHRUB BEDS AT FOUNDATION & TREES SHADING WEST FACING WINDOWS
- RESTORED LAWN AREA
- NEW ASPHALT PAVING MEETING ADA GUIDELINES
- EXISTING TREE TO REMAIN
- NEW IRRIGATION PROVIDED FOR ALL PLANTING AREAS WITHIN LIMIT OF WORK. CONNECT AT EXISTING 2" WATER
- IRRIGATION CONTROLLER LOCATED IN FIRST FLOOR MECHANICAL ROOM AT GUGGENHEIM HALL. COORDINATE NEW IRRIGATION LAYOUT WITH EXISTING EQUIPMENT AT THE PROJECT PERIMETER
- NEW PLANTING OF CONIFEROUS TREES IN SHRUB BED
- RENOVATED LAWN
- LIMIT OF WORK LINE
- RENOVATED LAWN AND DECIDUOUS TREES

- (1) STALL RESERVED DEPARTMENT
- (2) STALLS SERVICE UNVEHICLES
- (3) STALLS GENERAL
- (4) STALLS GENERAL
- (5) STALLS GENERAL
- (6) STALLS GENERAL
- (7) STALLS GENERAL
- (8) STALLS GENERAL
- (9) STALLS GENERAL
- (10) STALLS GENERAL
- (11) STALLS GENERAL
- (12) STALLS GENERAL
- (13) STALLS GENERAL
- (14) STALLS GENERAL
- (15) STALLS GENERAL
- (16) STALLS GENERAL
- (17) STALLS GENERAL
- (18) STALLS GENERAL
- (19) STALLS GENERAL
- (20) STALLS GENERAL
- (21) STALLS GENERAL
- (22) STALLS GENERAL
- (23) STALLS GENERAL
- (24) STALLS GENERAL
- (25) STALLS GENERAL
- (26) STALLS GENERAL
- (27) STALLS GENERAL
- (28) STALLS GENERAL
- (29) STALLS GENERAL
- (30) STALLS GENERAL
- (31) STALLS GENERAL
- (32) STALLS GENERAL
- (33) STALLS GENERAL
- (34) STALLS GENERAL
- (35) STALLS GENERAL
- (36) STALLS GENERAL
- (37) STALLS GENERAL
- (38) STALLS GENERAL
- (39) STALLS GENERAL
- (40) STALLS GENERAL
- (41) STALLS GENERAL
- (42) STALLS GENERAL
- (43) STALLS GENERAL
- (44) STALLS GENERAL
- (45) STALLS GENERAL
- (46) STALLS GENERAL
- (47) STALLS GENERAL
- (48) STALLS GENERAL
- (49) STALLS GENERAL
- (50) STALLS GENERAL
- (51) STALLS GENERAL
- (52) STALLS GENERAL
- (53) STALLS GENERAL
- (54) STALLS GENERAL
- (55) STALLS GENERAL
- (56) STALLS GENERAL
- (57) STALLS GENERAL
- (58) STALLS GENERAL
- (59) STALLS GENERAL
- (60) STALLS GENERAL
- (61) STALLS GENERAL
- (62) STALLS GENERAL
- (63) STALLS GENERAL
- (64) STALLS GENERAL
- (65) STALLS GENERAL
- (66) STALLS GENERAL
- (67) STALLS GENERAL
- (68) STALLS GENERAL
- (69) STALLS GENERAL
- (70) STALLS GENERAL
- (71) STALLS GENERAL
- (72) STALLS GENERAL
- (73) STALLS GENERAL
- (74) STALLS GENERAL
- (75) STALLS GENERAL
- (76) STALLS GENERAL
- (77) STALLS GENERAL
- (78) STALLS GENERAL
- (79) STALLS GENERAL
- (80) STALLS GENERAL
- (81) STALLS GENERAL
- (82) STALLS GENERAL
- (83) STALLS GENERAL
- (84) STALLS GENERAL
- (85) STALLS GENERAL
- (86) STALLS GENERAL
- (87) STALLS GENERAL
- (88) STALLS GENERAL
- (89) STALLS GENERAL
- (90) STALLS GENERAL
- (91) STALLS GENERAL
- (92) STALLS GENERAL
- (93) STALLS GENERAL
- (94) STALLS GENERAL
- (95) STALLS GENERAL
- (96) STALLS GENERAL
- (97) STALLS GENERAL
- (98) STALLS GENERAL
- (99) STALLS GENERAL
- (100) STALLS GENERAL



GUGGENHEIM HALL

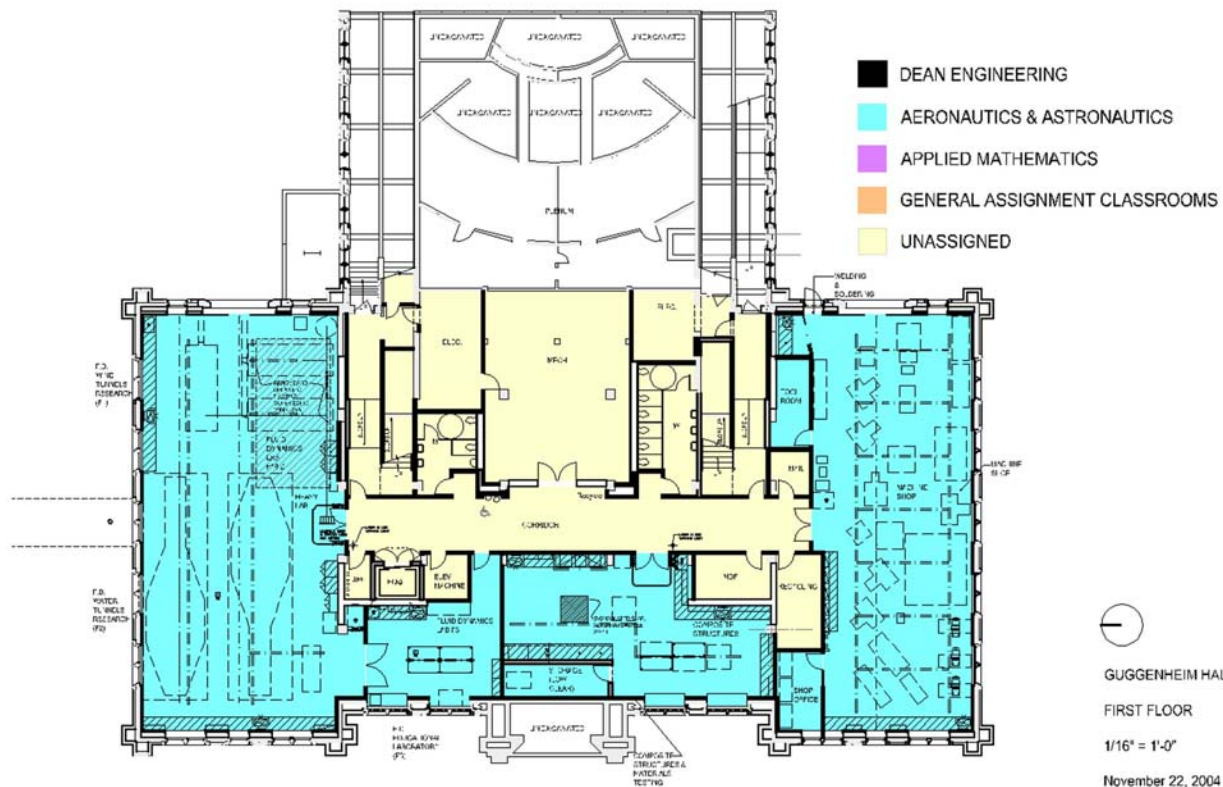
SECOND FLOOR

1/16" = 1'-0"

November 22, 2004

Pg. 2/5





○  
 GUGGENHEIM HALL  
 FIRST FLOOR  
 1/16" = 1'-0"  
 November 22, 2004  
 Pg. 1/5



- DEAN ENGINEERING
- AERONAUTICS & ASTRONAUTICS
- APPLIED MATHEMATICS
- GENERAL ASSIGNMENT CLASSROOMS
- UNASSIGNED

GUGGENHEIM HALL

THIRD FLOOR

1/16" = 1'-0"

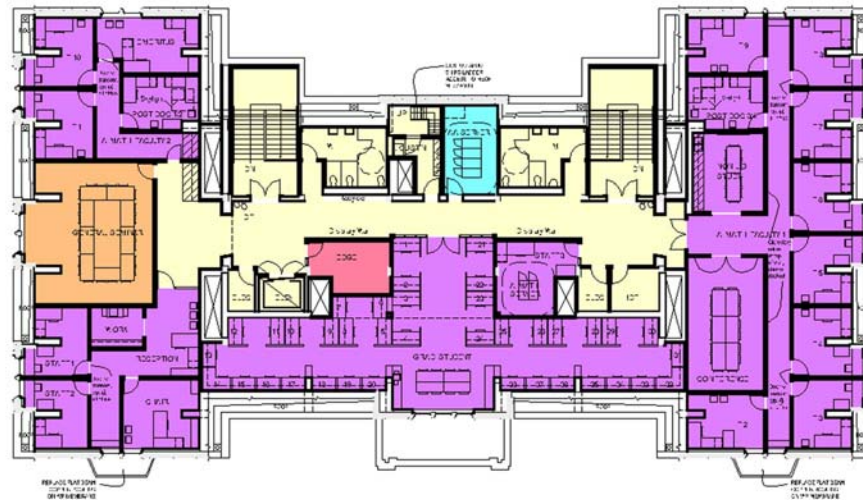
November 22, 2004

Pg. 3/5





- DEAN ENGINEERING
- AERONAUTICS & ASTRONAUTICS
- APPLIED MATHEMATICS
- GENERAL ASSIGNMENT CLASSROOM
- UNASSIGNED



GUGGENHEIM HALL

FOURTH FLOOR

1/16" = 1'-0"

November 22, 2004

Pg. 4/5

