

VII. STANDING COMMITTEES

B. Finance, Audit & Facilities Committee

Report of Contributions – April, 2010

For information only.

Attachment

University of Washington Foundation Report of Contributions for April, 2010

The logo is a white, stylized letter 'W' set against a dark purple square background, located in the top right corner of the page.The background image shows a scenic view of the University of Washington campus. In the foreground, a paved path leads uphill, flanked by large, leafy green trees. Several people are walking along the path, including a person with a red backpack. In the background, the Gothic-style architecture of a university building is visible under a clear blue sky.

UNIVERSITY of WASHINGTON | *Foundation*

Report of Contributions

All Areas

April 2010

Report By: University Advancement, Advancement Services, Information Management

ANNUAL PROGRESS BY CONSTITUENCY

School	Current Month (April 2010)				Year to Date (07/01/2009 - 04/30/2010)			
	Gifts	Grants	Total	Donors ¹	Gifts	Grants	Total	Donors
UW Medicine	\$2,209,265	\$21,345,085	\$23,554,350	2,280	\$30,374,274	\$91,809,448	\$122,183,722	14,092
Arts and Sciences	\$1,081,580	\$456,883	\$1,538,463	1,638	\$13,307,694	\$5,853,222	\$19,160,916	12,377
Broadcast Services	\$47,788	\$0	\$47,788	294	\$2,259,524	\$0	\$2,259,524	2,194
Built Environments	\$44,227	\$724,500	\$768,727	78	\$1,022,878	\$1,137,908	\$2,160,786	1,145
Business School	\$272,239	\$0	\$272,239	257	\$11,373,628	\$30,000	\$11,403,628	3,732
Dentistry	\$76,709	\$0	\$76,709	145	\$2,771,195	\$295,527	\$3,066,722	1,139
Education	\$25,964	\$0	\$25,964	198	\$1,888,260	\$2,134,598	\$4,022,858	1,278
Engineering	\$873,991	\$1,346,568	\$2,220,558	299	\$10,496,297	\$7,218,949	\$17,715,246	3,970
Environment	\$169,269	\$252,799	\$422,068	271	\$4,318,716	\$3,039,852	\$7,358,568	1,773
Evans School of Public Affairs	\$9,851	\$55,000	\$64,851	72	\$178,424	\$440,000	\$618,424	372
Forest Resources	\$0	\$0	\$0	0	\$0	\$0	\$0	0
Graduate School	\$51,151	\$50,000	\$101,151	24	\$882,187	\$50,000	\$932,187	300
Information School	\$49,804	\$0	\$49,804	47	\$239,520	\$1,276,250	\$1,515,770	609
Intercollegiate Athletics	\$851,288	\$0	\$851,288	1,333	\$11,789,699	\$0	\$11,789,699	13,057
Law	\$123,868	\$0	\$123,868	126	\$1,429,509	\$17,500	\$1,447,009	1,539
Libraries	\$46,877	\$0	\$46,877	544	\$948,671	\$0	\$948,671	4,905
Minority Affairs	\$13,247	\$0	\$13,247	153	\$314,164	\$25,000	\$339,164	586
Nursing	\$464,307	\$0	\$464,307	157	\$2,757,184	\$633,253	\$3,390,437	1,582
Ocean and Fishery Sciences	\$0	\$0	\$0	0	\$0	\$0	\$0	0
Pharmacy	\$142,656	\$0	\$142,656	66	\$1,398,179	\$1,394,079	\$2,792,258	886
President's Funds	\$15,573	\$0	\$15,573	96	\$521,042	\$0	\$521,042	1,340
Public Health	\$16,372	\$2,099,696	\$2,116,068	102	\$636,695	\$14,424,784	\$15,061,479	668
Social Work	\$50,607	\$899,855	\$950,462	33	\$1,241,940	\$1,211,321	\$2,453,261	736
Student Affairs	\$52,718	\$0	\$52,718	187	\$4,806,312	\$0	\$4,806,312	2,464
Undergraduate Academic Affairs	\$15,112	\$0	\$15,112	58	\$518,201	\$143,276	\$661,477	603
University Press	\$42,838	\$0	\$42,838	12	\$233,703	\$0	\$233,703	116
UW Alumni Association	\$80,346	\$0	\$80,346	1,649	\$639,302	\$0	\$639,302	13,417
UW Bothell	\$23,387	\$36,561	\$59,948	110	\$446,337	\$795,661	\$1,241,998	517
UW Tacoma	\$27,681	\$0	\$27,681	100	\$1,802,243	\$29,744	\$1,831,987	679
Other University Support	\$44,010	\$44,500	\$88,510	381	\$3,221,610	\$1,993,323	\$5,214,933	1,924
Total	\$6,922,727	\$27,311,446	\$34,234,173	10,100	\$111,817,386	\$133,953,694	\$245,771,080	75,485

MONTHLY HIGHLIGHTS

The UW received \$34.23M in total private voluntary support (\$6.92M in gifts and \$27.31M in grants) in the current month.

Areas including UW Medicine, Built Environments, Dentistry, Education, Engineering, Environment, Intercollegiate Athletics, Libraries, Nursing, Pharmacy, Public Health, Social Work, Student Affairs, Undergraduate Academic Affairs and University Press are ahead of last year's year-to-date totals.

¹ Donors are defined as those entities who have a credit amount of greater than \$0.00.

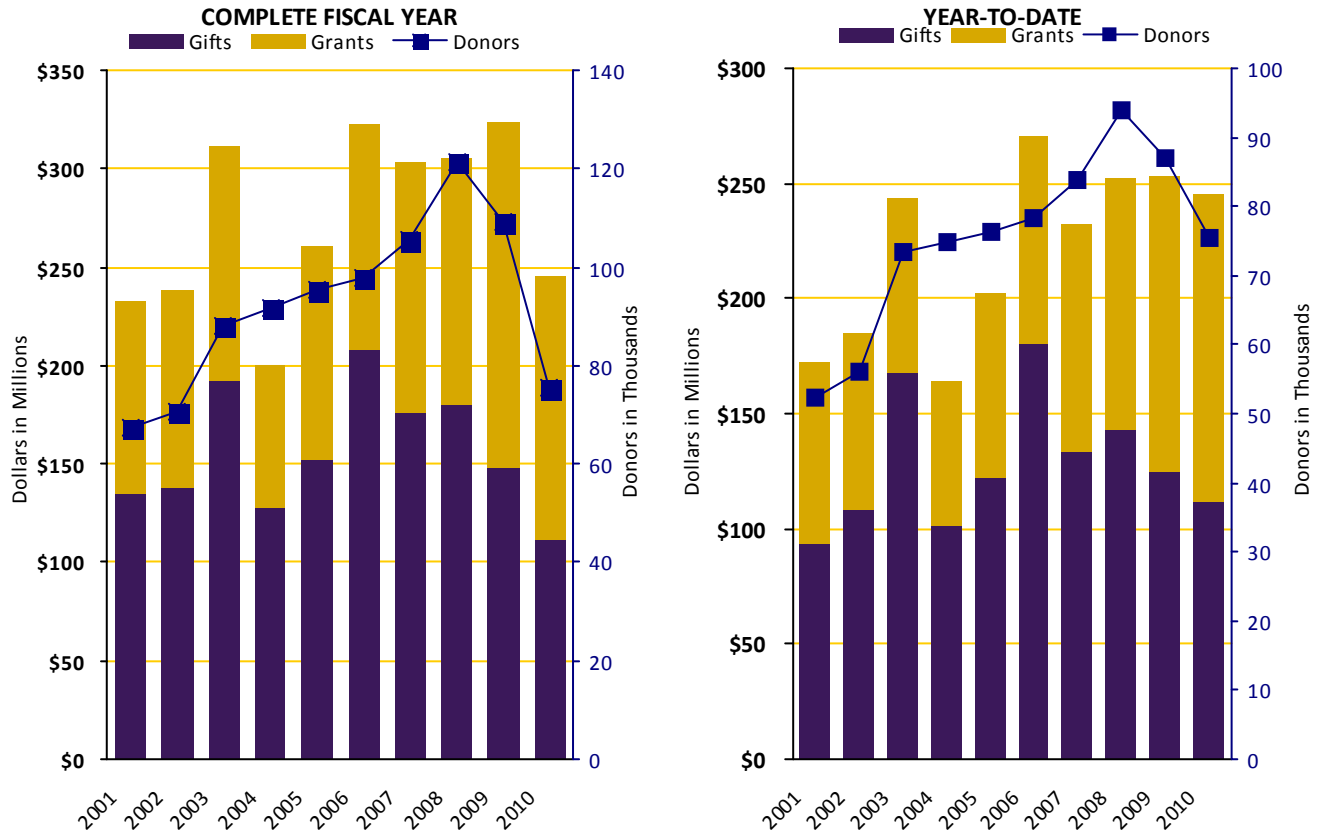
The donor total at the bottom of the chart is not a cumulative total of the rows above. The donor total is the number of unique donors who have been credited with a gift to the UW during the given time period.

DEVELOPMENT SUMMARY BY CONSTITUENCY

School	Current Month		Year to Date		Prior Year to Date		Prior Year Total	
	Total	Donors	Total	Donors	Total	Donors	Total	Donors
UW Medicine	\$23,554,350	2,280	\$122,183,722	14,092	\$111,274,121	14,894	\$156,190,821	16,799
Arts and Sciences	\$1,538,463	1,638	\$19,160,916	12,377	\$20,992,712	13,269	\$25,589,815	14,817
Broadcast Services	\$47,788	294	\$2,259,524	2,194	\$2,779,213	13,015	\$4,427,717	16,191
Built Environments	\$768,727	78	\$2,160,786	1,145	\$2,057,888	1,225	\$2,127,643	1,341
Business School	\$272,239	257	\$11,403,628	3,732	\$22,584,480	3,774	\$25,381,696	4,210
Dentistry	\$76,709	145	\$3,066,722	1,139	\$2,276,894	1,302	\$2,541,366	1,584
Education	\$25,964	198	\$4,022,858	1,278	\$3,186,530	1,395	\$3,724,956	1,667
Engineering	\$2,220,558	299	\$17,715,246	3,970	\$15,733,391	3,871	\$18,855,120	4,260
Environment	\$422,068	271	\$7,358,568	1,773	\$4,671,093	27	\$4,679,781	27
Evans School of Public Affairs	\$64,851	72	\$618,424	372	\$2,496,493	400	\$2,718,803	480
Forest Resources	\$0	0	\$0	0	\$2,255,118	973	\$3,451,299	1,096
Graduate School	\$101,151	24	\$932,187	300	\$1,546,752	310	\$1,602,622	324
Information School	\$49,804	47	\$1,515,770	609	\$1,604,635	554	\$1,679,278	609
Intercollegiate Athletics	\$851,288	1,333	\$11,789,699	13,057	\$11,139,195	12,139	\$15,659,243	23,317
Law	\$123,868	126	\$1,447,009	1,539	\$2,283,029	1,663	\$2,665,941	1,935
Libraries	\$46,877	544	\$948,671	4,905	\$900,569	4,363	\$1,171,951	5,280
Minority Affairs	\$13,247	153	\$339,164	586	\$346,882	381	\$388,492	511
Nursing	\$464,307	157	\$3,390,437	1,582	\$3,116,463	1,487	\$3,549,704	1,678
Ocean and Fishery Sciences	\$0	0	\$0	0	\$9,325,042	673	\$10,157,709	740
Pharmacy	\$142,656	66	\$2,792,258	886	\$1,683,710	905	\$2,098,248	1,034
President's Funds	\$15,573	96	\$521,042	1,340	\$5,623,815	1,540	\$5,761,734	1,691
Public Health	\$2,116,068	102	\$15,061,479	668	\$13,773,153	709	\$15,492,932	792
Social Work	\$950,462	33	\$2,453,261	736	\$1,181,967	642	\$1,289,956	700
Student Affairs	\$52,718	187	\$4,806,312	2,464	\$2,573,303	2,544	\$2,906,525	3,000
Undergraduate Academic Affairs	\$15,112	58	\$661,477	603	\$412,342	310	\$424,576	353
University Press	\$42,838	12	\$233,703	116	\$183,304	155	\$219,219	167
UW Alumni Association	\$80,346	1,649	\$639,302	13,417	\$754,510	15,034	\$1,001,508	19,763
UW Bothell	\$59,948	110	\$1,241,998	517	\$2,084,886	506	\$2,229,545	592
UW Tacoma	\$27,681	100	\$1,831,987	679	\$1,843,213	645	\$3,656,827	792
Other University Support	\$88,510	381	\$5,214,933	1,924	\$2,357,203	1,977	\$2,433,450	2,220
Total¹	\$34,234,173	10,100	\$245,771,080	75,485	\$253,041,908	87,101	\$324,078,477	109,083

¹ The donor total at the bottom of the chart is not a cumulative total of the rows above. The donor total is the number of unique donors who have been credited with a gift to the UW during the given time period.

FISCAL YEAR COMPARISON OF TOTAL CONTRIBUTIONS



Fiscal Year	Complete Fiscal Year				Year to Date			
	Gifts	Grants	Total	Donors	Gifts	Grants	Total	Donors
2009-2010	\$111,817,386	\$133,953,694	\$245,771,080	75,485	\$111,817,386	\$133,953,694	\$245,771,080	75,485
2008-2009	\$148,364,809	\$175,713,667	\$324,078,477	109,083	\$124,878,006	\$128,163,902	\$253,041,908	87,101
2007-2008	\$180,735,444	\$124,224,214	\$304,959,657	121,447	\$142,940,995	\$109,295,358	\$252,236,353	93,875
2006-2007	\$176,490,215	\$126,399,369	\$302,889,584	105,353	\$133,126,824	\$99,466,674	\$232,593,498	83,674
2005-2006	\$207,744,231	\$115,261,186	\$323,005,417	97,876	\$180,494,199	\$90,387,665	\$270,881,863	78,460
2004-2005	\$151,969,925	\$108,802,371	\$260,772,296	95,227	\$122,122,874	\$80,143,890	\$202,266,764	76,167
2003-2004	\$128,174,367	\$71,603,323	\$199,777,690	91,903	\$101,365,172	\$62,684,981	\$164,050,153	74,985
2002-2003	\$192,573,183	\$118,677,722	\$311,250,905	88,259	\$168,025,960	\$75,232,159	\$243,258,119	73,546
2001-2002	\$137,959,340	\$100,820,547	\$238,779,887	70,560	\$108,064,405	\$76,888,322	\$184,952,727	55,977
2000-2001	\$134,797,642	\$97,112,979	\$231,910,621	67,307	\$94,000,176	\$78,829,602	\$172,829,778	52,440

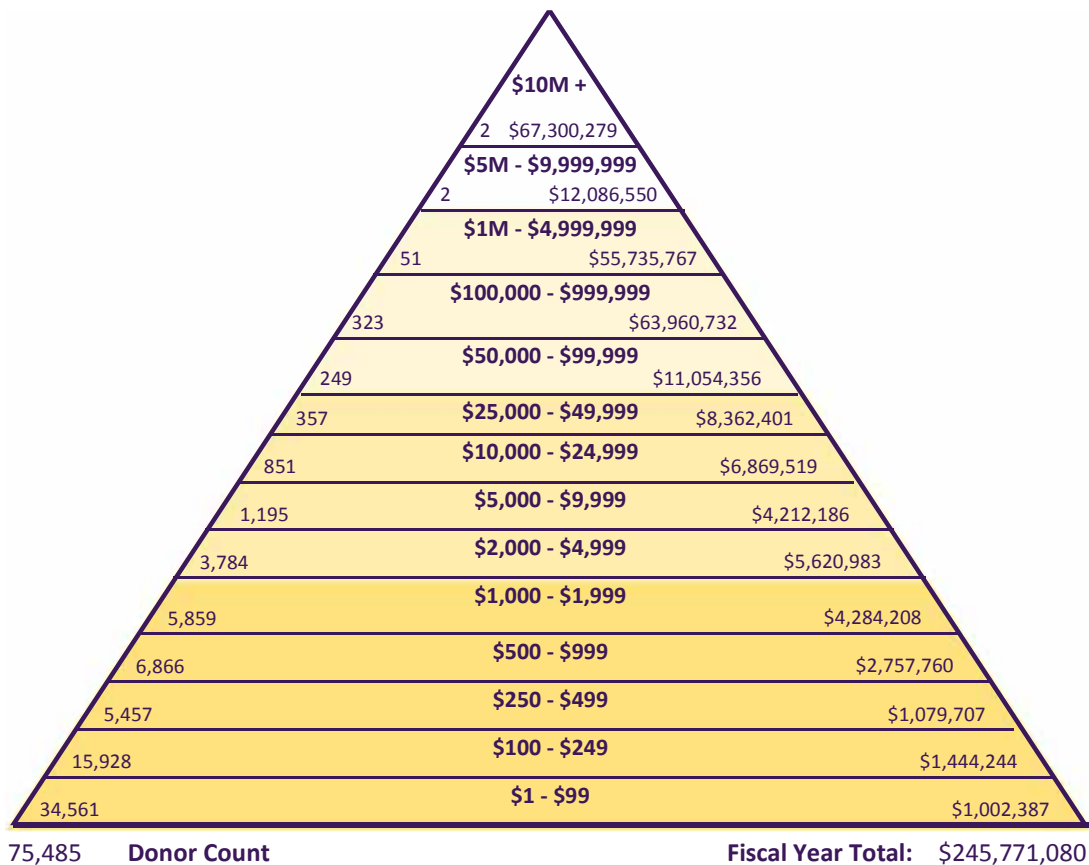
ANNUAL FUNDING THEME PROGRESS

Theme	Year to Date		
	Current Use	Endowment	Total
Student Support	\$7,282,755	\$16,011,156	\$23,293,911
Faculty Support	\$7,885,689	\$7,550,495	\$15,436,184
Program Support for Faculty and Students	\$164,363,340	\$10,058,192	\$174,421,532
Capital	\$11,130,184	\$5,300	\$11,135,484
Excellence Funds	\$21,228,381	\$255,588	\$21,483,969
Total	\$211,890,348	\$33,880,732	\$245,771,080

DEVELOPMENT ACTIVITY BY DONOR TYPE

Donor Type	Year to Date		Prior Year to Date		Prior Fiscal Year	
	Donors	Total	Donors	Total	Donors	Total
Alumni	39,040	\$27,358,913	41,525	\$31,746,877	49,981	\$40,529,614
Corporations	2,287	\$35,390,433	2,364	\$46,906,837	3,029	\$79,017,981
Family Foundations	160	\$10,216,536	154	\$12,108,643	173	\$15,996,206
Foundations	378	\$83,062,993	371	\$71,250,271	427	\$83,293,447
Non-Alumni	33,119	\$30,547,024	42,305	\$37,352,225	54,849	\$41,916,304
Organizations	501	\$59,195,180	530	\$53,677,055	624	\$63,324,926
Total	75,485	\$245,771,080	87,249	\$253,041,908	109,083	\$324,078,477

DEVELOPMENT ACTIVITY PYRAMID



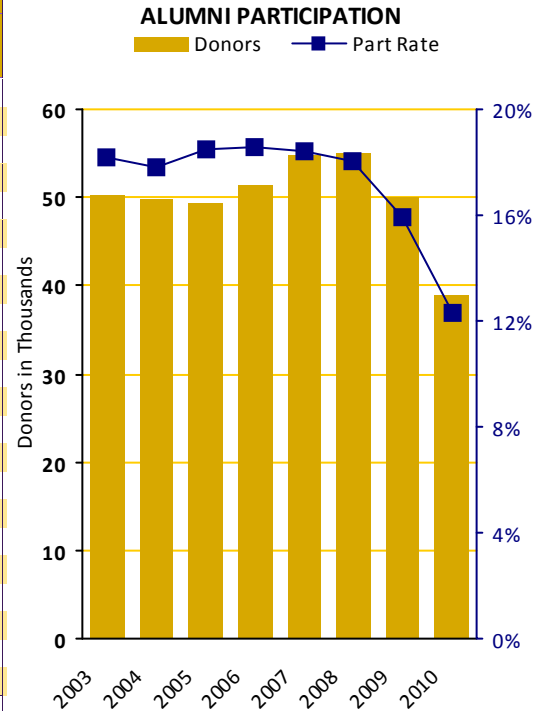
ANNUAL PROGRESS BY GIVING LEVEL

Giving Level	Alumni	Non Alumni	Family Fndns.	Corporations	Foundations	Other Orgs.	Total
\$10M +	\$0	\$0	\$0	\$0	\$45,999,915	\$21,300,364	\$67,300,279
\$5M - \$9,999,999	\$0	\$5,765,493	\$0	\$0	\$0	\$6,321,057	\$12,086,550
\$1M - \$4,999,999	\$4,646,572	\$5,514,025	\$5,154,100	\$10,197,191	\$15,971,288	\$14,252,592	\$55,735,767
\$100,000 - \$999,999	\$7,222,777	\$8,220,600	\$3,021,189	\$15,265,388	\$17,172,093	\$13,058,685	\$63,960,732
\$50,000 - \$99,999	\$1,581,753	\$1,350,513	\$746,633	\$3,624,018	\$1,933,434	\$1,818,005	\$11,054,356
\$25,000 - \$49,999	\$1,642,406	\$1,102,020	\$699,381	\$2,479,203	\$1,082,110	\$1,357,282	\$8,362,401
\$10,000 - \$24,999	\$2,073,025	\$1,693,014	\$405,114	\$1,728,350	\$466,747	\$503,270	\$6,869,519
\$5,000 - \$9,999	\$1,687,689	\$1,126,134	\$99,930	\$746,447	\$238,376	\$313,610	\$4,212,186
\$2,000 - \$4,999	\$2,766,615	\$1,811,799	\$58,086	\$686,954	\$127,708	\$169,821	\$5,620,983
\$1,000 - \$1,999	\$2,095,149	\$1,665,805	\$27,588	\$389,895	\$47,115	\$58,657	\$4,284,208
\$500 - \$999	\$1,488,848	\$1,059,688	\$3,491	\$168,448	\$13,843	\$23,443	\$2,757,760
\$250 - \$499	\$642,614	\$375,120	\$300	\$46,389	\$5,617	\$9,667	\$1,079,707
\$100 - \$249	\$868,117	\$519,967	\$700	\$44,820	\$4,112	\$6,529	\$1,444,244
\$1 - \$99	\$643,347	\$342,847	\$25	\$13,332	\$636	\$2,200	\$1,002,387
Total	\$27,358,913	\$30,547,024	\$10,216,536	\$35,390,433	\$83,062,993	\$59,195,180	\$245,771,080

Giving Level	Alumni	Non Alumni	Family Fndns.	Corporations	Foundations	Other Orgs.	Total
\$10M +	0	0	0	0	1	1	2
\$5M - \$9,999,999	0	1	0	0	0	1	2
\$1M - \$4,999,999	8	12	3	8	12	8	51
\$100,000 - \$999,999	57	88	19	62	55	42	323
\$50,000 - \$99,999	57	72	13	51	30	26	249
\$25,000 - \$49,999	94	92	22	74	35	40	357
\$10,000 - \$24,999	270	346	28	136	36	35	851
\$5,000 - \$9,999	477	472	19	139	40	48	1,195
\$2,000 - \$4,999	1,769	1,616	21	275	43	60	3,784
\$1,000 - \$1,999	2,580	2,844	22	325	36	52	5,859
\$500 - \$999	3,273	3,231	6	292	22	42	6,866
\$250 - \$499	2,828	2,420	1	161	18	29	5,457
\$100 - \$249	8,348	7,144	5	347	32	52	15,928
\$1 - \$99	19,279	14,781	1	417	18	65	34,561
Total	39,040	33,119	160	2,287	378	501	75,485

ALUMNI PARTICIPATION BY CONSTITUENCY (CURRENT FISCAL YEAR)

Area	Solicitable	To UW		To Unit	
		Year to Date		Year to Date	
		Donors	Part Rate	Donors	Part Rate
UW Medicine	19,127	3,071	16.06%	2,103	10.99%
Arts and Sciences	146,824	16,184	11.02%	5,383	3.67%
Business School	38,262	5,837	15.26%	2,022	5.28%
Built Environments	8,184	1,090	13.32%	489	5.98%
Dentistry	4,540	951	20.95%	532	11.72%
Education	18,841	2,648	14.05%	552	2.93%
Engineering	32,965	4,073	12.36%	2,194	6.66%
Evans School of Public Affairs	2,496	429	17.19%	198	7.93%
Forest Resources	4,612	497	10.78%		
Interdisc. Grad. Programs	1,817	228	12.55%		
Interdisc. Undergrad. Programs	258	20	7.75%		
Interschool Programs	520	50	9.62%		
Information School	4,614	811	17.58%	406	8.80%
Law	7,905	1,408	17.81%	846	10.70%
School of Nursing	8,644	1,512	17.49%	892	10.32%
Ocean & Fisheries	4,076	491	12.05%		
Pharmacy	3,547	740	20.86%	551	15.53%
Public Health	4,580	643	14.04%	268	5.85%
Social Work	6,522	783	12.01%	370	5.67%
UW Bothell	6,995	600	8.58%	295	4.22%
UW Tacoma	8,050	543	6.75%	326	4.05%
Unspecified	11,600	1,650	14.22%		
ALL UW TOTAL	317,522	39,040	12.30%		



ALUMNI PARTICIPATION BY CONSTITUENCY (PREVIOUS FISCAL YEAR)

Area	Solicitable	To UW				To Unit			
		Year to Date		FY Total		Year to Date		FY Total	
		Donors	Part Rate	Donors	Part Rate	Donors	Part Rate	Donors	PFY Final
UW Medicine	19,109	2,978	15.58%	3,576	18.71%	1,992	10.42%	2,279	11.93%
Arts and Sciences	145,069	16,585	11.43%	21,029	14.50%	5,920	4.08%	6,553	4.52%
Business School	37,913	5,841	15.41%	7,343	19.37%	2,052	5.41%	2,345	6.19%
Built Environments	8,096	1,141	14.09%	1,410	17.42%	534	6.60%	576	7.11%
Dentistry	4,501	1,023	22.73%	1,237	27.48%	609	13.53%	722	16.04%
Education	18,944	2,812	14.84%	3,494	18.44%	545	2.88%	620	3.27%
Engineering	32,856	4,022	12.24%	4,994	15.20%	2,094	6.37%	2,374	7.23%
Evans School of Public Affairs	2,394	422	17.63%	529	22.10%	160	6.68%	189	7.89%
Forest Resources	4,601	582	12.65%	713	15.50%	283	6.15%	329	7.15%
Interdisc. Grad. Programs	1,719	208	12.10%	261	15.18%				
Interdisc. Undergrad. Programs	247	18	7.29%	27	10.93%				
Interschool Programs	493	56	11.36%	74	15.01%				
Information School	4,516	755	16.72%	932	20.64%	356	7.88%	395	8.75%
Law	7,755	1,485	19.15%	1,792	23.11%	883	11.39%	987	12.73%
School of Nursing	8,661	1,523	17.58%	1,804	20.83%	864	9.98%	944	10.90%
Ocean & Fisheries	4,038	564	13.97%	681	16.86%	304	7.53%	335	8.30%
Pharmacy	3,529	762	21.59%	895	25.36%	535	15.16%	594	16.83%
Public Health	4,465	679	15.21%	803	17.98%	254	5.69%	288	6.45%
Social Work	6,428	811	12.62%	972	15.12%	389	6.05%	427	6.64%
UW Bothell	6,635	623	9.39%	799	12.04%	221	3.33%	253	3.81%
UW Tacoma	7,685	581	7.56%	793	10.32%	253	3.29%	305	3.97%
Unspecified	11,813	1,711	14.48%	2,160	18.28%				
ALL UW TOTAL	314,219	39,986	12.73%	49,980	15.91%				

The University of Washington Alumni Association is the broad-based engagement vehicle for University Advancement and the University of Washington. Through its strategically designed programs, the UW Alumni Association invites alumni, donors and friends to engage in the life of the UW. Research indicates that engaged alumni and friends are more inclined to support the University and its students. The UW Alumni Association is proud to develop a solid base of support for the University of Washington.



UWAA Member Giving by Constituency

School	Solicitable Alumni	Members ¹	Member		
			Donors	Members	Non Members
UW Medicine	19,127	1,904	896	47.06%	10.99%
Arts and Sciences	146,824	18,291	5,317	29.07%	5.57%
Business School	38,262	7,051	2,452	34.78%	7.28%
Built Environments	8,184	1,111	333	29.97%	7.59%
Dentistry	4,540	1,017	440	43.26%	10.30%
Education	18,841	3,065	1,058	34.52%	6.76%
Engineering	32,965	4,463	1,378	30.88%	6.78%
Evans School of Public Affairs	2,496	289	104	35.99%	10.74%
Forest Resources	4,612	637	168	26.37%	5.51%
Interdisc. Grad. Programs	1,817	157	47	29.94%	7.65%
Interdisc. Undergrad. Progra	258	17	3	17.65%	5.39%
Interscholar Programs	520	41	8	19.51%	5.64%
Information School	4,614	746	264	35.39%	10.86%
Law	7,905	1,026	473	46.10%	11.43%
School of Nursing	8,644	1,322	491	37.14%	11.13%
Ocean & Fisheries	4,076	469	141	30.06%	7.10%
Pharmacy	3,547	624	275	44.07%	13.45%
Public Health	4,580	408	147	36.03%	9.68%
Social Work	6,522	603	193	32.01%	7.60%
UW Bothell	6,995	593	127	21.42%	3.89%
UW Tacoma	8,050	596	118	19.80%	3.06%
Unspecified	11,600	2,495	815	32.67%	5.18%
Non-Alumni		8,030	4,652	57.93%	
Total	317,522	52,756	18,219	34.53%	

Alumni Activity

1 in 3 registrants at 2009 UW events were UWAA members
1 in 12 registrants at 2009 UW events were UW donors
2 in 3 registrants at 2009 UW events were Solicitable Alumni
1 in 25 UWAA members attended a 2009 UW event
1 in 3 2008-2009 Football/Basketball season ticket holders were UWAA members
1 in 8 UWAA members were 2008-2009 Football/Basketball season ticket holders

Top 10 Membership by Class Year

Class Year	Part. Rate	Class Year	Population
1955	23.07%	2009	1,648
1953	22.16%	1971	1,096
1959	22.03%	1973	1,060
1954	21.88%	1974	1,044
1946	21.84%	1970	1,034
1956	21.34%	1972	1,027
1952	21.20%	1976	1,019
1950	20.96%	1975	985
1951	20.53%	1977	968
1944	20.52%	1968	892

Activity Participation - Rolling 3 Year Total³

School ²	Participants	Part. Donors	% Donors	Alum Non-Part.	Alum Non-Par Donor	% Non-Part Donor
UW Medicine	3,535	2,756	77.96%	19,025	3,257	17.12%
Arts and Sciences	11,794	2,869	24.33%	137,251	7,712	5.62%
Built Environments	1,315	571	43.42%	7,478	788	10.54%
Business School	5,384	1,429	26.54%	34,620	3,153	9.11%
Dentistry	1,797	751	41.79%	2,662	339	12.73%
Education	1,663	391	23.51%	16,638	925	5.56%
Engineering	2,458	847	34.46%	30,801	3,058	9.93%
Environment	542	514	94.83%			
Evans School of Public Affairs	675	253	37.48%	2,151	331	15.39%
Graduate School	306	188	61.44%	1,263	2	0.16%
Information School	651	184	28.26%	4,278	521	12.18%
Law	1,897	810	42.70%	6,486	1,112	17.14%
Libraries	790	766	96.96%			
Nursing	893	422	47.26%	8,073	1,336	16.55%
Ocean & Fishery Sciences	261			3,623		
Pharmacy	361	214	59.28%	3,316	767	23.13%
Public Health	511	185	36.20%	3,674	380	10.34%
Social Work	665	194	29.17%	6,097	694	11.38%
UW Bothell	581	186	32.01%	7,029	606	8.62%
UW Tacoma	429	187	43.59%	8,603	810	9.42%

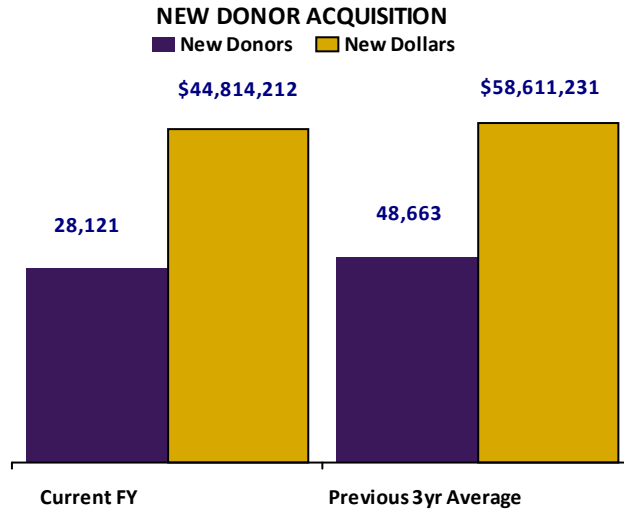
¹ Members include paid Annual Members, Lifetime Members, and TPC Level Donors

² Activity is based on a unit affiliated Alumni or Donor being labeled as a positive RSVP, host, speaker, or participant at any tracked UW activity.

³ 3-Years consists of any activity since 7/1/2006

Source: University of Washington Alumni Association

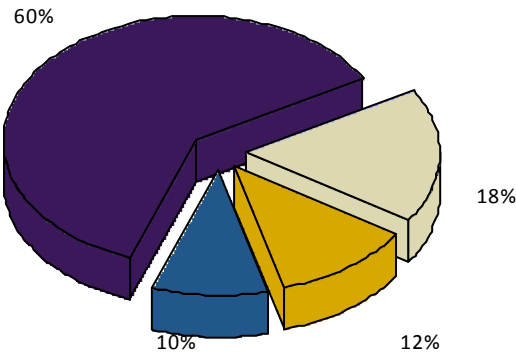
KEY PERFORMANCE INDICATORS



	New Donors	New Dollars
Current FY	28,121	\$44,814,212
Previous 3yr Average	48,663	\$58,611,231

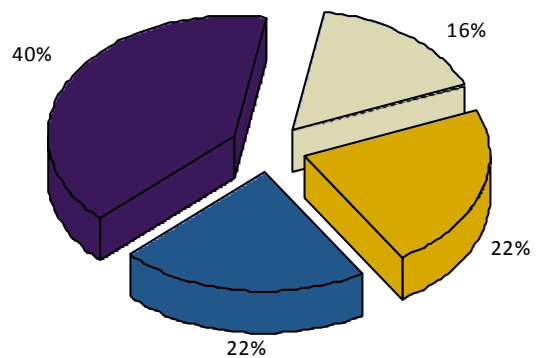
DONOR RETENTION (CURRENT FY)

- Returning Donor - Decreased Giving
- Returning Donor - Increased Giving
- Returning Donor - Same Giving
- Yet to Return as Donor



DONOR RETENTION (PREVIOUS 3YR AVG)

- Returning Donor - Decreased Giving
- Returning Donor - Increased Giving
- Returning Donor - Same Giving
- Yet to Return as Donor



	Donors	Dollars		Donors	Dollars
Returning Donor - Decreased Giving	21,338	\$47,050,517	Returning Donor - Decreased Giving	16,124	\$65,278,811
Returning Donor - Increased Giving	14,042	\$150,328,028	Returning Donor - Increased Giving	22,023	\$178,192,234
Returning Donor - Same Giving	11,984	\$3,578,123	Returning Donor - Same Giving	21,414	\$8,169,227
Yet to Return as Donor	74,083		Yet to Return as Donor	39,919	

Donor counts may vary slightly due to donor crediting preferences.
 Three-year averages are based on fiscal year totals and do not reflect year-to-date status.

Source: University Advancement, Information Management Report # devrpts_s10053
 REPORT OF CONTRIBUTIONS, UNIVERSITY OF WASHINGTON April 2010

(07/01/2009 - 04/30/2010)

STATE OF THE DATABASE

School	Alumni	Friends	Total	Mailable	Mail %	Phonable	Phone %	Emailable	Email %	Emp Info	Emp %
UW Medicine	23,131	34,991	58,122	53,222	91.57%	31,011	53.36%	13,325	22.93%	17,558	30.21%
Arts and Sciences	183,968	18,134	202,102	169,248	83.74%	77,159	38.18%	51,513	25.49%	53,500	26.47%
Broadcast Services	0	37,557	37,557	36,679	97.66%	14,395	38.33%	5,245	13.97%	6,975	18.57%
Built Environments	9,688	1,686	11,374	10,079	88.61%	5,285	46.47%	3,036	26.69%	4,369	38.41%
Business School	47,306	3,915	51,221	43,168	84.28%	21,770	42.50%	16,094	31.42%	21,929	42.81%
Dentistry	5,121	1,558	6,679	6,180	92.53%	3,961	59.31%	1,977	29.60%	2,067	30.95%
Education	24,767	2,285	27,052	20,854	77.09%	10,942	40.45%	4,384	16.21%	7,824	28.92%
Engineering	41,605	3,979	45,584	37,547	82.37%	18,629	40.87%	11,031	24.20%	17,097	37.51%
Environment	0	4,296	4,296	4,116	95.81%	3,185	74.14%	1,590	37.01%	1,794	41.76%
Evans School of Public Affairs	2,894	509	3,403	3,172	93.21%	1,858	54.60%	1,752	51.48%	1,866	54.83%
Forest Resources	5,667	0	5,667	4,668	82.37%	2,235	39.44%	1,289	22.75%	2,255	39.79%
Graduate School	2,106	982	3,088	2,902	93.98%	1,830	59.26%	1,410	45.66%	1,428	46.24%
Information School	5,879	403	6,282	5,200	82.78%	3,182	50.65%	1,860	29.61%	2,694	42.88%
Intercollegiate Athletics	0	9,484	9,484	9,309	98.15%	7,360	77.60%	4,412	46.52%	3,801	40.08%
Law	8,987	1,679	10,666	9,662	90.59%	5,183	48.59%	6,022	56.46%	4,959	46.49%
Libraries	0	13,155	13,155	12,896	98.03%	10,742	81.66%	3,227	24.53%	2,538	19.29%
Minority Affairs	0	1,441	1,441	1,409	97.78%	1,053	73.07%	778	53.99%	798	55.38%
Nursing	10,946	1,536	12,482	10,341	82.85%	5,740	45.99%	2,916	23.36%	4,762	38.15%
Ocean and Fishery Sciences	4,994	0	4,994	4,175	83.60%	1,974	39.53%	1,188	23.79%	2,013	40.31%
Pharmacy	4,304	763	5,067	4,403	86.90%	2,538	50.09%	1,454	28.70%	2,229	43.99%
President's Funds	0	3,870	3,870	3,793	98.01%	3,009	77.75%	1,418	36.64%	2,036	52.61%
Public Health	5,319	838	6,157	5,601	90.97%	3,069	49.85%	2,499	40.59%	2,823	45.85%
Social Work	7,919	913	8,832	7,527	85.22%	3,542	40.10%	1,877	21.25%	3,013	34.11%
Student Affairs	0	9,446	9,446	9,278	98.22%	7,180	76.01%	3,723	39.41%	4,228	44.76%
Undergraduate Academic Affairs	0	1,339	1,339	1,295	96.71%	966	72.14%	630	47.05%	454	33.91%
University Press	0	583	583	556	95.37%	401	68.78%	230	39.45%	232	39.79%
UW Alumni Association	0	39,958	39,958	38,957	97.49%	24,725	61.88%	20,893	52.29%	15,557	38.93%
UW Bothell	8,108	940	9,048	8,471	93.62%	4,304	47.57%	3,360	37.14%	1,551	17.14%
UW Tacoma	9,511	912	10,423	9,726	93.31%	4,989	47.87%	3,489	33.47%	1,477	14.17%
Other University Support	974	6,927	7,901	7,523	95.22%	5,343	67.62%	3,850	48.73%	2,111	26.72%
Unspecified School	16,489	0	16,489	11,349	68.83%	6,137	37.22%	2,007	12.17%	3,684	22.34%
No Degree\Gift Affiliation	0	283,643	283,557	256,543	90.47%	153,376	54.09%	33,940	11.97%	49,115	17.32%
Total	397,467	392,863	790,330	689,274	87.21%	366,144	46.33%	152,090	19.24%	189,014	23.92%

Database Trends

