

**VII. STANDING COMMITTEES****A. Academic and Student Affairs**

*In Joint Session with*

**B. Finance, Audit and Facilities Committee**

Washington State Department of Transportation Preferred Alternative for the SR 520 Project - Informational Update

INFORMATION:

This is an informational update on the preferred alternative that was announced by the Governor on April 29<sup>th</sup> for SR 520.

PROJECT DESCRIPTION:

After 13 years of analysis and input from thousands of people, the Governor announced the state's preferred alternative for the I-5 to Medina Bridge Replacement and HOV project. The preferred alternative has 6 lanes, a complete HOV system from Seattle to Redmond, improved safety features, bike and pedestrian paths along the corridor, a second bascule bridge next to the current one, no direct access ramps from the Arboretum to SR 520 and the Westside interchange stays at Montlake and includes an expanded lid.

Included in the preferred alternative is a lid over Montlake that would take the place of the Sound Transit pedestrian overpass and would tie into the Rainier Vista land-bridge. This is currently a concept that will be explored and refined during the month of June in a series of charrettes which will include the UW, ST, WSDOT, SDOT and King County METRO.

This is the alternative the University supported in its comment letter. It has the least amount of impact on University resources and does less environmental damage to the areas surrounding the interchange. It can be built within the defined budget and can be permitted by the environmental agencies with jurisdiction over the project.

PROPOSED SCHEDULE:

- April 28, 2010 – Announce Preferred Alternative
- June to August 2010 – WSDOT convenes three Workgroups as defined by ESSB 6392 to refine preferred alternative
- June 2010 – WSDOT convenes charrettes to refine lid over Montlake
- December 2010 – Workgroup reports issued to Legislature and public

## VII. STANDING COMMITTEES

### A. Academic and Student Affairs

*In Joint Session with*

### B. Finance, Audit and Facilities Committee

#### Washington State Department of Transportation Preferred Alternative for the SR 520 Project - Informational Update (continued p. 2)

- January 2011 – Final Environmental Impact Statement issued
- 2012 Permits for construction received
- 2014 New floating bridge open to drivers

#### PREVIOUS ACTIONS:

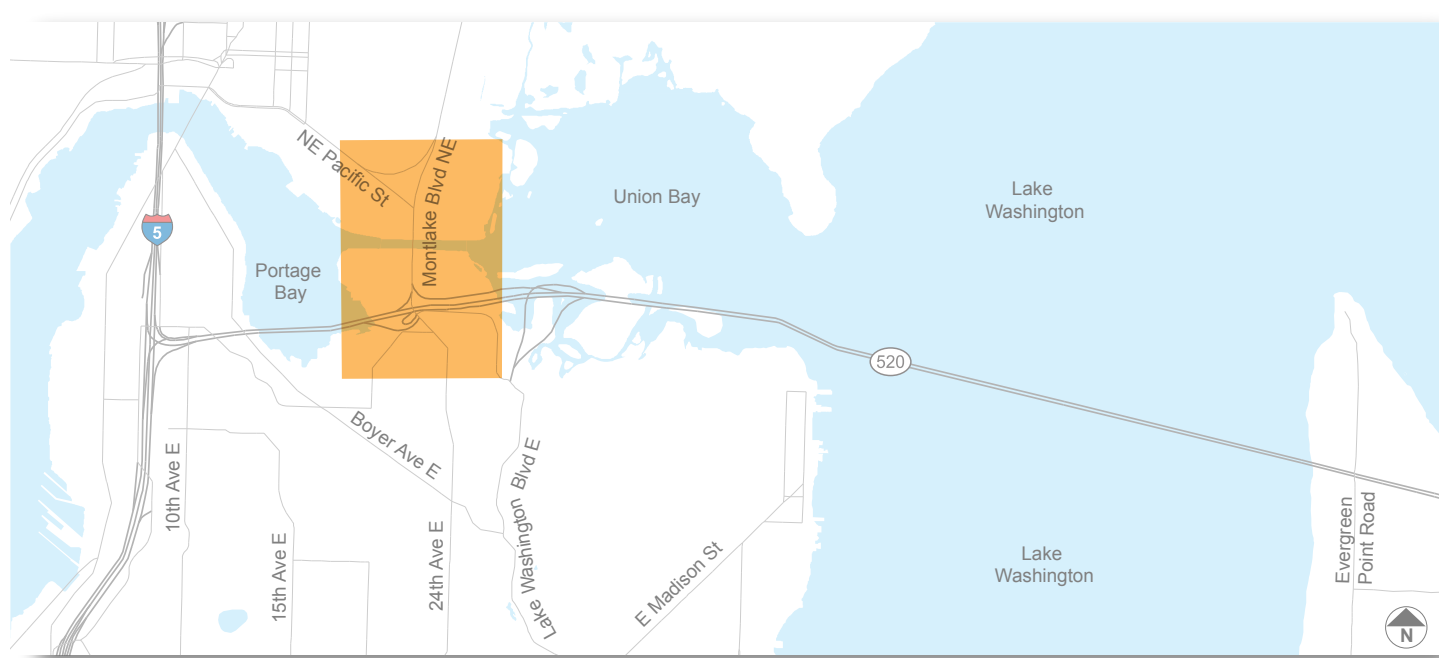
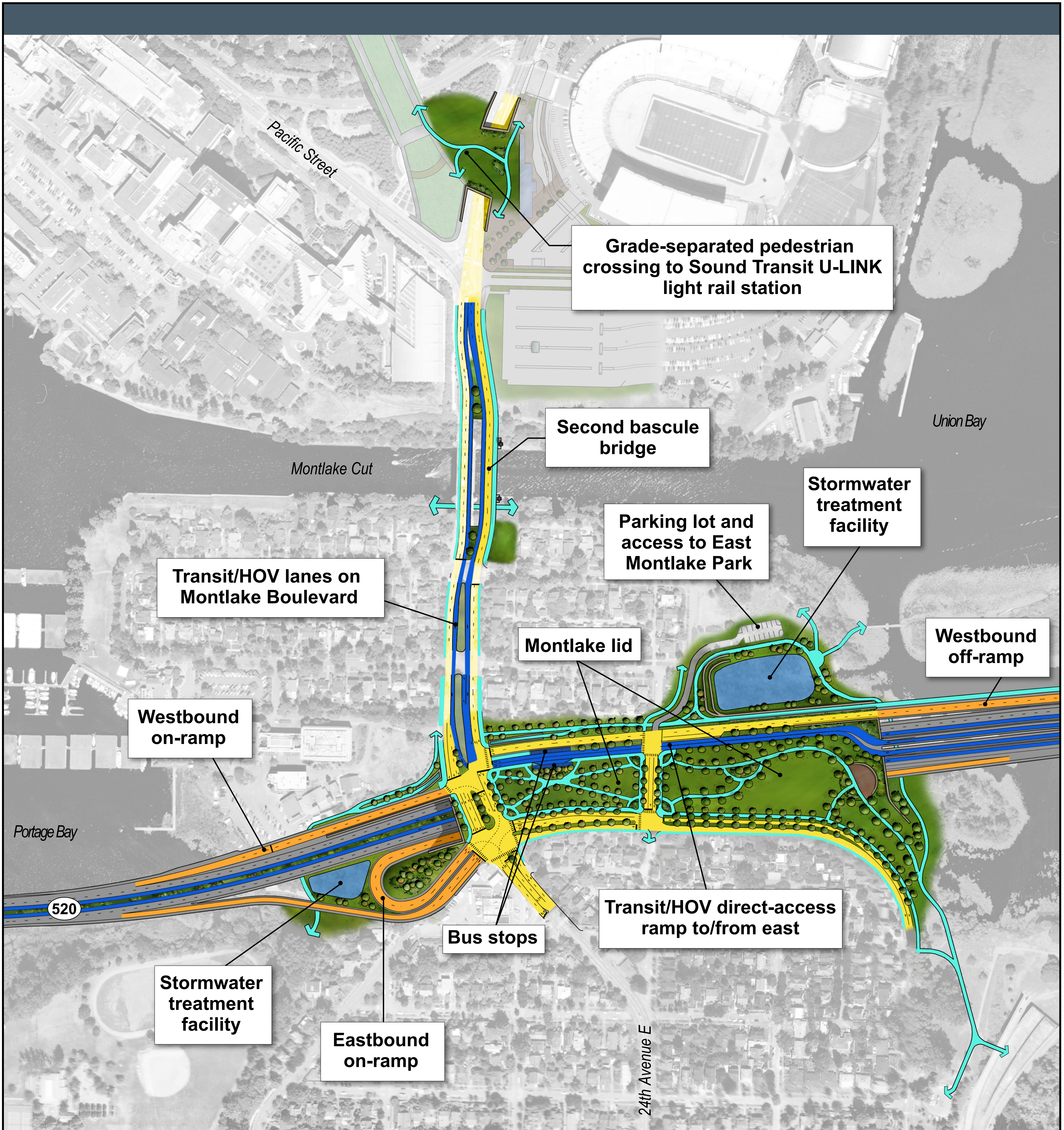
- May 2005 – Update on Pacific Interchange alternative of SR 520 project (information only)
- March 2010 – Update on SR 520 planning (information only)

*Attachment*

Montlake Interchange graphic



## Montlake Interchange



Vicinity map

Additional refinement will occur through the City of Seattle design process per legislation (ESSB 6392).

**LEGEND:**

- General-purpose lane (SR 520)
- Existing general-purpose (local)
- General-purpose lane (local)
- Transit/HOV lane
- On- and off-ramp
- Bicycle and pedestrian path

