

VII. STANDING COMMITTEES

B. Finance, Audit and Facilities Committee

Sound Transit Construction Schedule

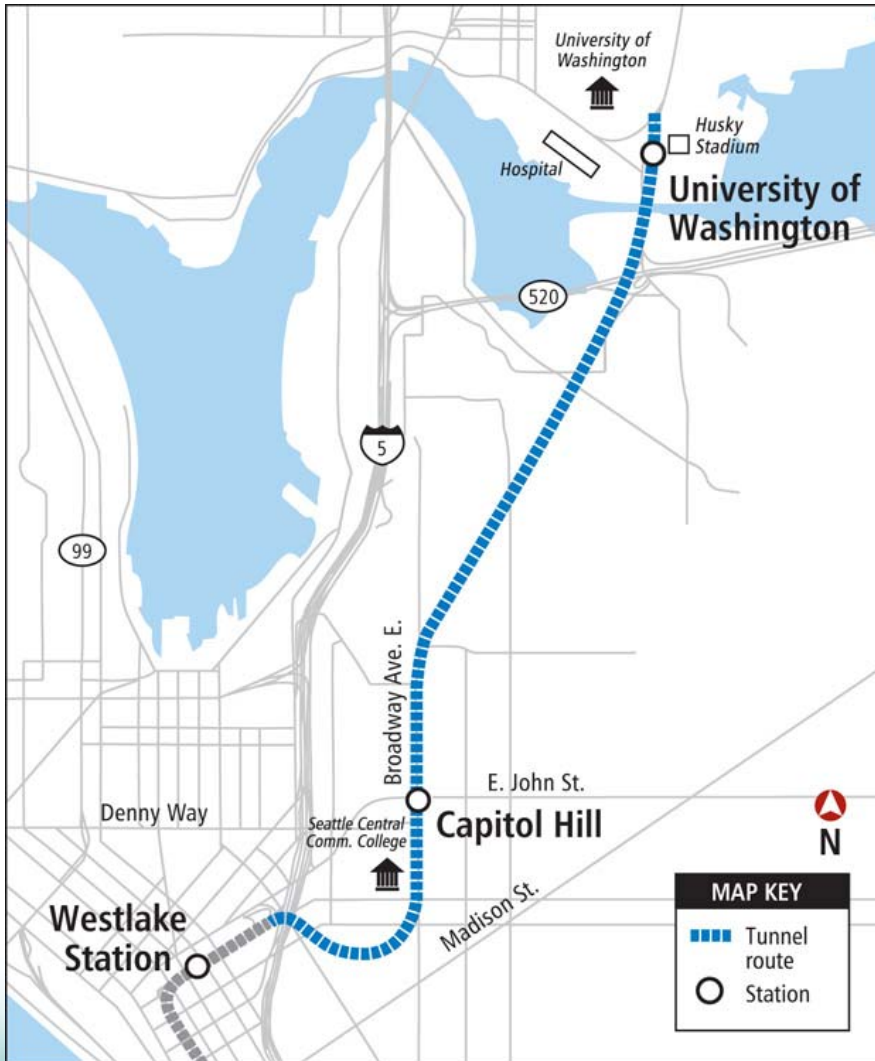
For information only.

Materials will be distributed at the meeting.

# University Link UW Station Construction Update

UW Board of Regents Briefing  
January 21, 2010

# University Link



- 3.15-mile extension of Initial Segment and Airport Link
  - Capitol Hill Station
  - UW Station and crossover
- Schedule:
  - Design: completed
  - Construction: 6 years
  - System testing: 6 months
  - Open for service: 2016
- Capital budget: \$1.78 billion
- Adds 70,000 daily riders, 114,000 riders systemwide (2030)

# UW/ST Agreement Background

- Master Implementation Agreement (MIA) completed in 2007 and addressed:
  - design and construction approval process
  - vibration and EMI mitigation
  - parking relocation
  - temporary and permanent easements
  - Funds UW staffing for project support
  - grants ST access to UW site

# U-Link Implementation Approach

- FTA approved \$813 million grant in January 2009
- Ground breaking at UW site on March 6, 2009
- 3 smaller site preparation contracts (2 completed)
- 2 major tunnel contracts (NTP issued)
  - UW to Capitol Hill
  - Capitol Hill to Pine Street
- 2 station finishes contracts
- Systems installation contract
- Project complete, service starts Sept. 2016

# UW Station

- Underground station located adjacent to Husky Stadium
  - Pedestrian bridge provides access to campus, buses and Burke Gilman Trail
- Travel time:
  - 6 minutes to Westlake
- 25,000 daily boardings
  - 70% of riders would use bridge
  - Escalators, elevators, stair and bike access
  - Grade separated crossing of BG Trail required



- Station design began in 2007; held several public design review meetings
- UW Regents approved station and bridge design in November 2008
- City Council approved bridge permit in April 2009



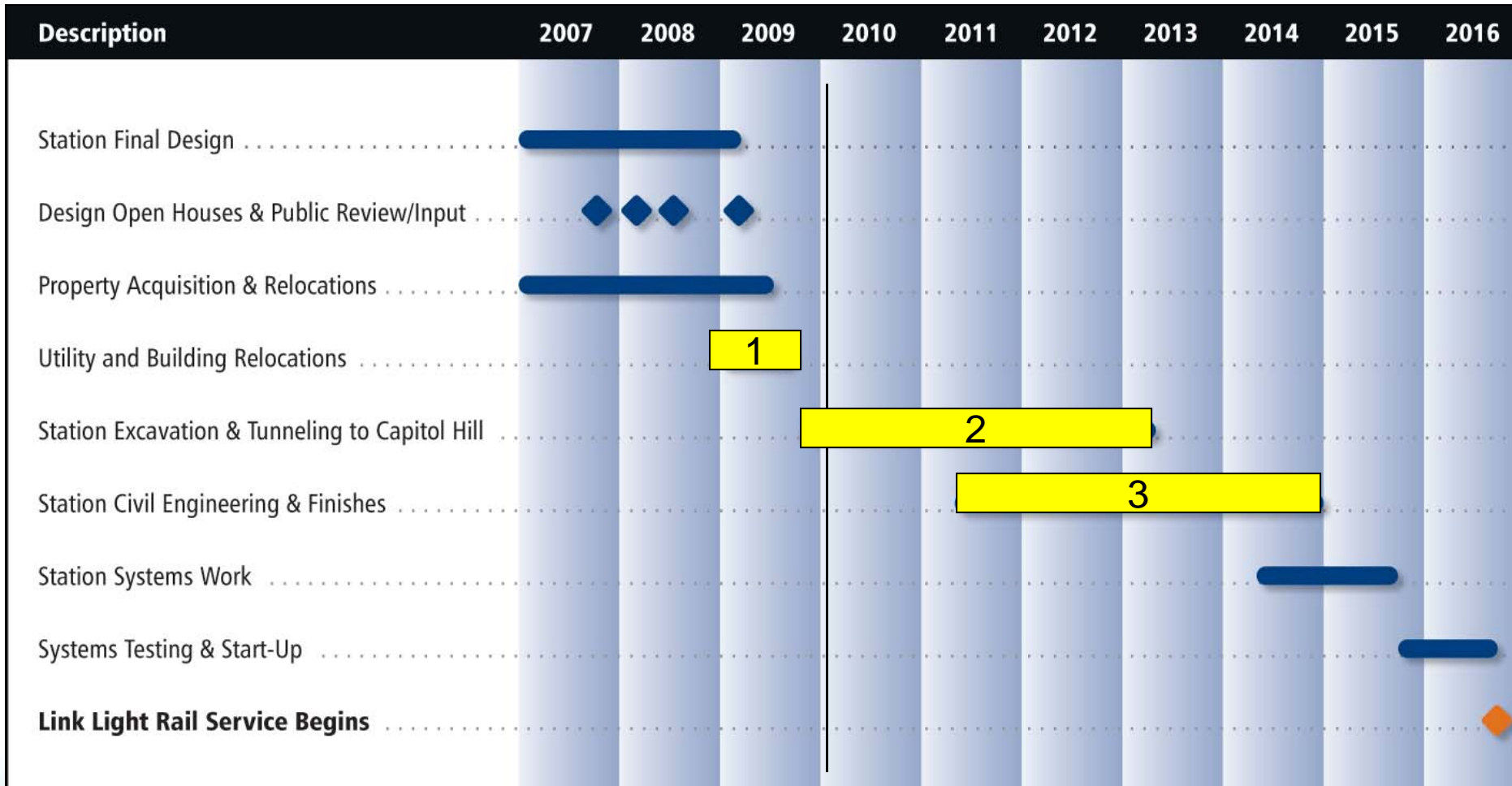
# UNIVERSITY OF WASHINGTON STATION

## UNIVERSITY LINK



SITE PLAN AT BRIDGE

# UW Station Construction Schedule

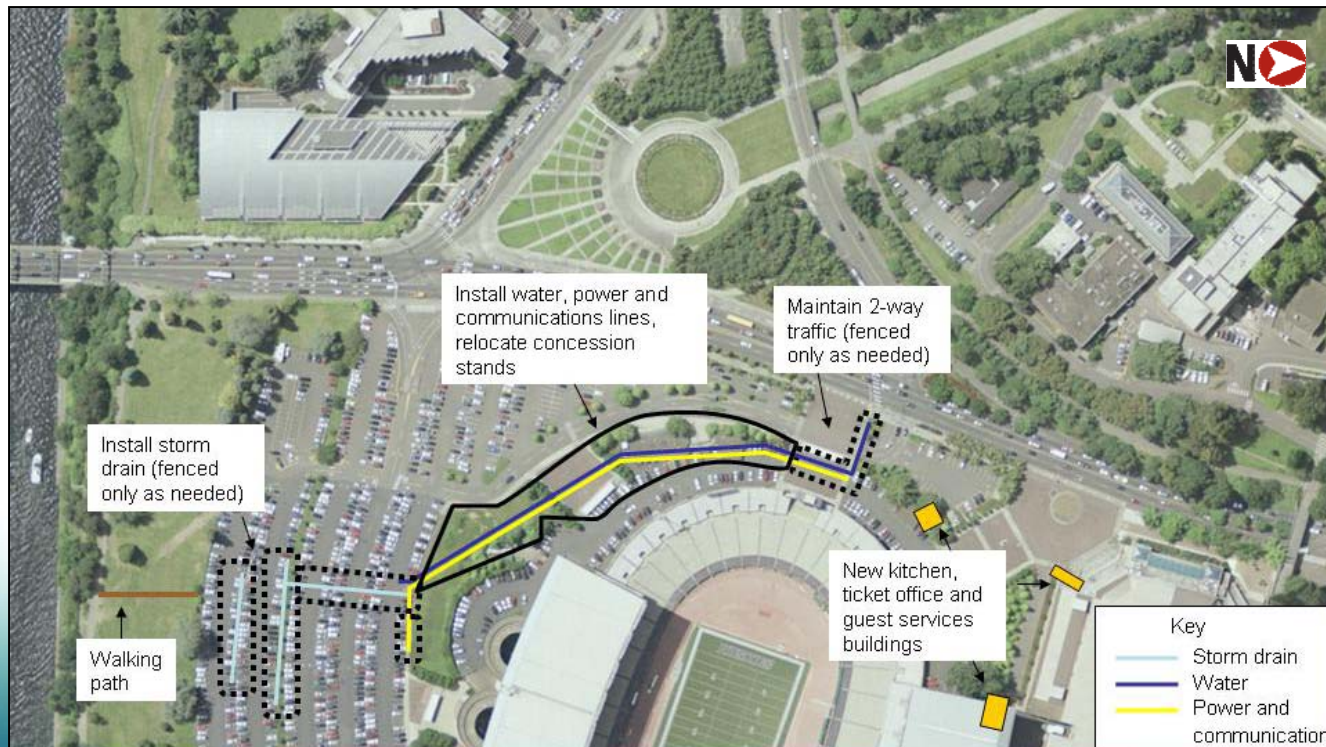




# 1. Utility Relocation (Completed)

2008 - 2009

- Relocated water and power utilities near Husky Stadium
- Installed storm drain
- Demolished and replaced stadium concession, ticket, restroom buildings



# 2. Excavation/Tunneling

2010 - 2013

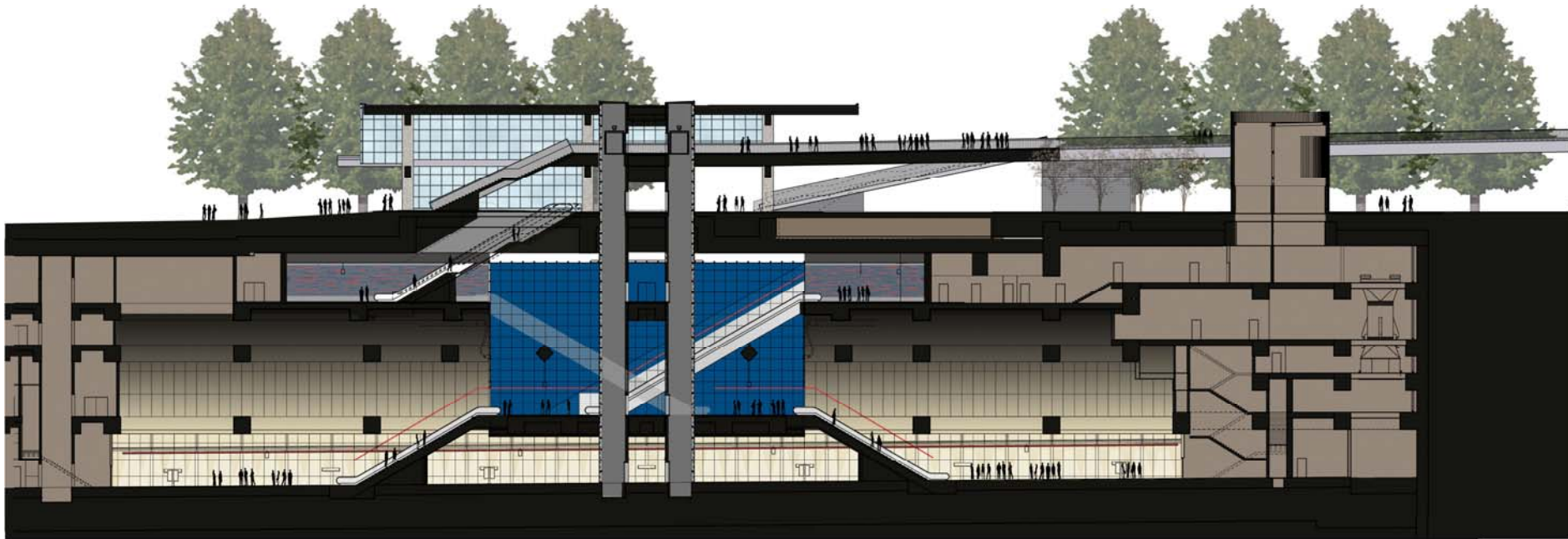
- Prepare site, build roads and utilities
- Build station walls, excavate crossover 'box'
- Construct tunnels to Capitol Hill Station
- Site work now underway





# 3. Station Construction

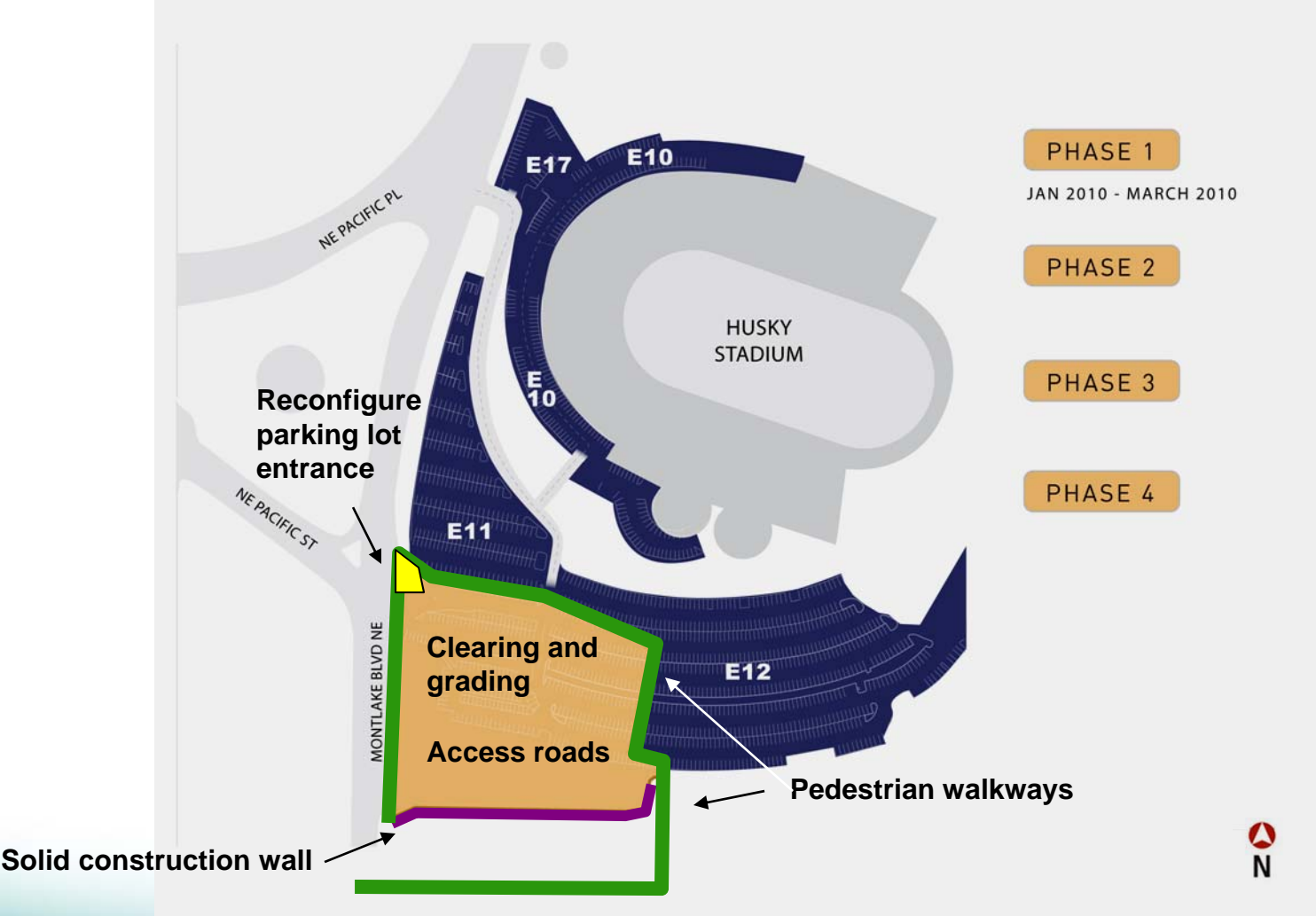
2011 - 2015



- Build station mezzanine levels, entrances, plaza, bridge
- Restore University parking lot and stadium gates

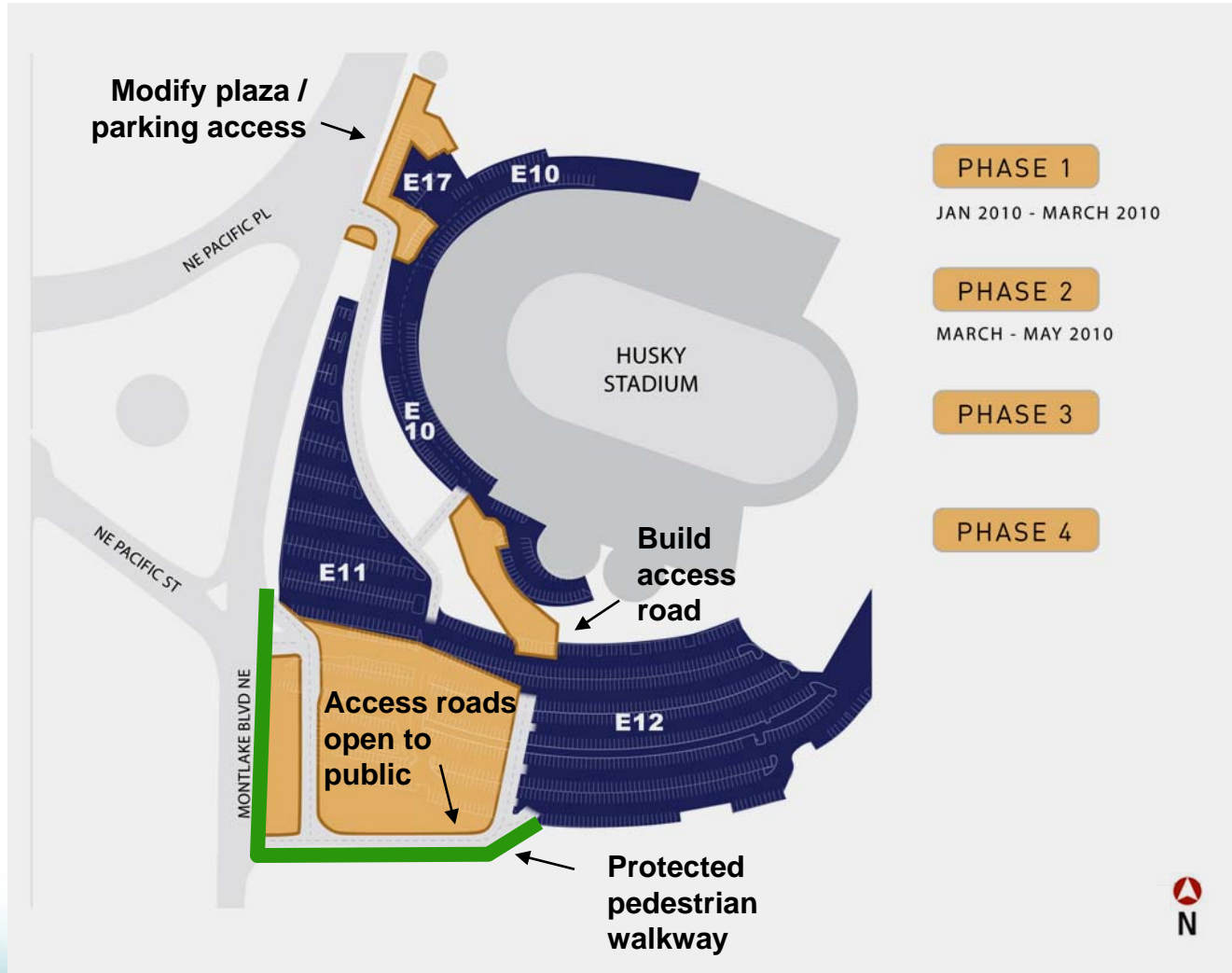
# Construction Staging Plan - Phase 1

January 2010 to March 2010



# Staging Plan - Phase 2

March 2010 – May 2010





# Staging Plan - Phases 3 & 4

May 2010 to June 2013

