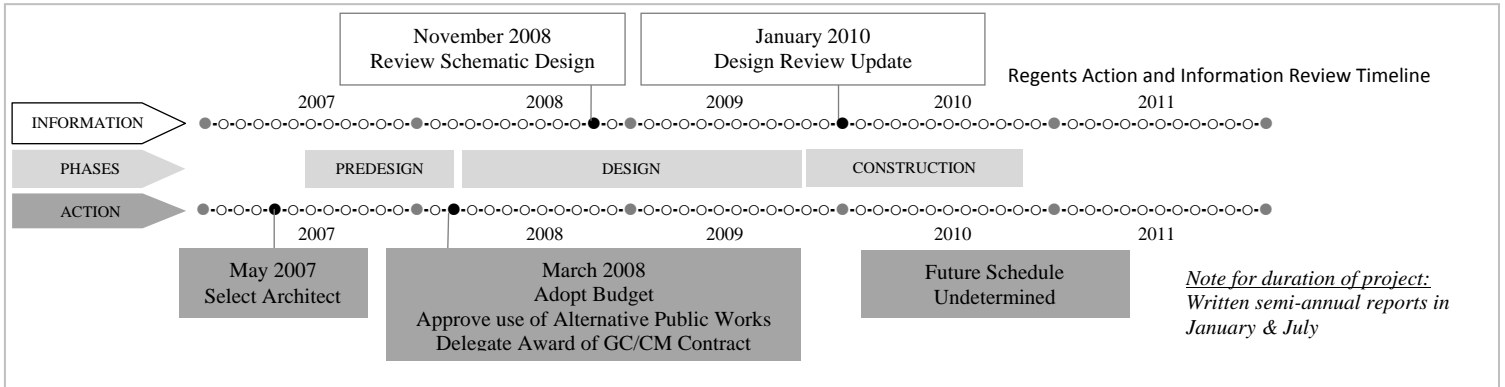


VII. STANDING COMMITTEES

B. Finance, Audit and Facilities Committee

Lewis Hall – Design Review Update



INFORMATION:

This presentation is an update of the project design and is for information only.

PROJECT DESCRIPTION:

Lewis Hall was constructed in 1899 as a dormitory and is one of the oldest buildings on the Seattle campus. It is a part of the University’s “Restore the Core” program of major building renovations. The current Business School occupants will temporarily move to Condon Hall and will then be relocated to the new PACCAR Hall. The Information School (iSchool) assignment to Lewis Hall will allow for the iSchool’s Mary Gates Hall space to be used to consolidate key student services currently located in several other campus buildings. The relocated iSchool will be able to physically express its identity as a separate school as well as move into a space that has been specifically designed for a program that is a highly collaborative culture that fosters collegiality, inclusiveness, creativity, and innovation.

PREVIOUS ACTIONS:

At the May 2007 Board of Regents meeting, the President was delegated authority to award design contracts to Mithun Architects for the Lewis Hall Renovation project. At the March 2008 Board of Regents meeting, the project budget of \$25,130,000 was established; the use of alternative public works utilizing the General Contractor/Construction Manager (GC/CM) method of contracting was approved; and the President was delegated authority to award a construction contract, subject to no significant change in the scope, the forecast cost being

## VII. STANDING COMMITTEES

### B. Finance, Audit and Facilities Committee

#### Lewis Hall –Design Review Update (continued p. 2)

within 10% of the budget and funding being in place. At the November 2008 meeting, the schematic design was presented for information.

#### SCOPE OF THE PROJECT:

Lewis Hall is proposed as the new home of the iSchool and the renovation and addition will be designed to fit the iSchool's program, history, style, and image. The program's history from Librarianship to the current information age is reflected in the architecture with the contrasting styles of the historic Lewis Hall and the new addition. The program includes learning spaces, faculty offices, administrative and collaboration spaces. In order to accommodate the iSchool's current space needs of 17,800 assignable square feet (asf) an addition of 5,800 asf will be added to the existing 31,415 gsf, 12,000 asf, building. This project will provide all new major building systems utilizing sustainability goals to achieve a State-mandated Leadership in Energy and Environmental Design (LEED) Silver certification; address seismic, life safety and accessibility requirements; and ensure the preservation of this historic building.

#### SCHEDULE:

Pre-design	July 2007 to December 2007
Design	April 2008 to September 2009 (On hold at design development)
Construction Permit	To be determined
Construction	To be determined
Occupancy	To be determined

#### CURRENT PROJECT STATUS:

The State did not appropriate construction funding during the 2009 legislative session to meet the previous project schedule to start construction in the Fall of 2009. The project was put on hold September 2009 at the end of the design development phase. Though design funding was previously allocated the decision was made to not complete construction documents until construction funding was approved.

As the project moved from schematic design to design development, the exterior design of the addition went through a number of refinements that resulted in a simpler overall visual expression that included reducing the overall height of the addition by incorporating a basement mechanical area.

## VII. STANDING COMMITTEES

### B. Finance, Audit and Facilities Committee

#### Lewis Hall –Design Review Update (continued p. 3)

##### SIGNIFICANT RISKS OR OPPORTUNITIES:

This project comes an opportunity to develop a new identity and physical presence for the iSchool that represents the evolution from Librarianship to the current information age.

The addition to the existing building must be sensitively designed with respect to the historic nature of the original structure without adversely impacting the architectural and historic significance of the building.

The State previously approved the \$2,000,000 design funding for the 2007-2009 Biennium, and will need to approve construction funding of \$23,130,000 to allow the project to move forward.

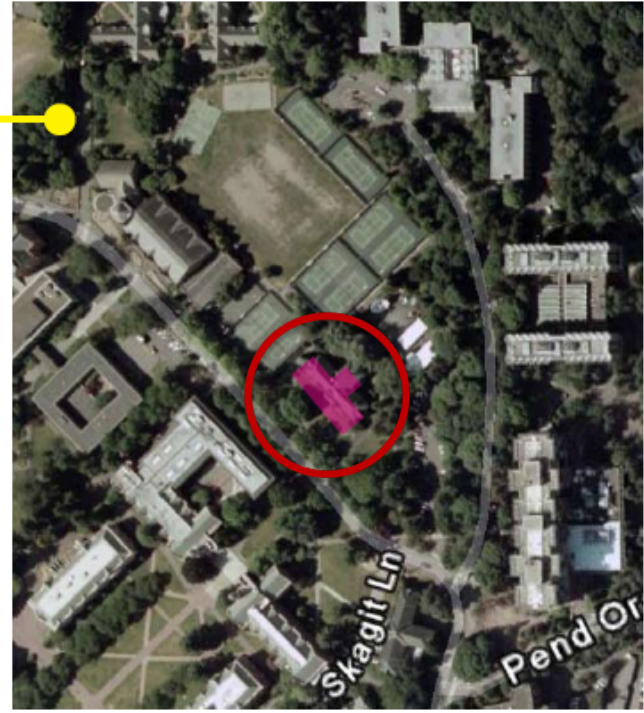
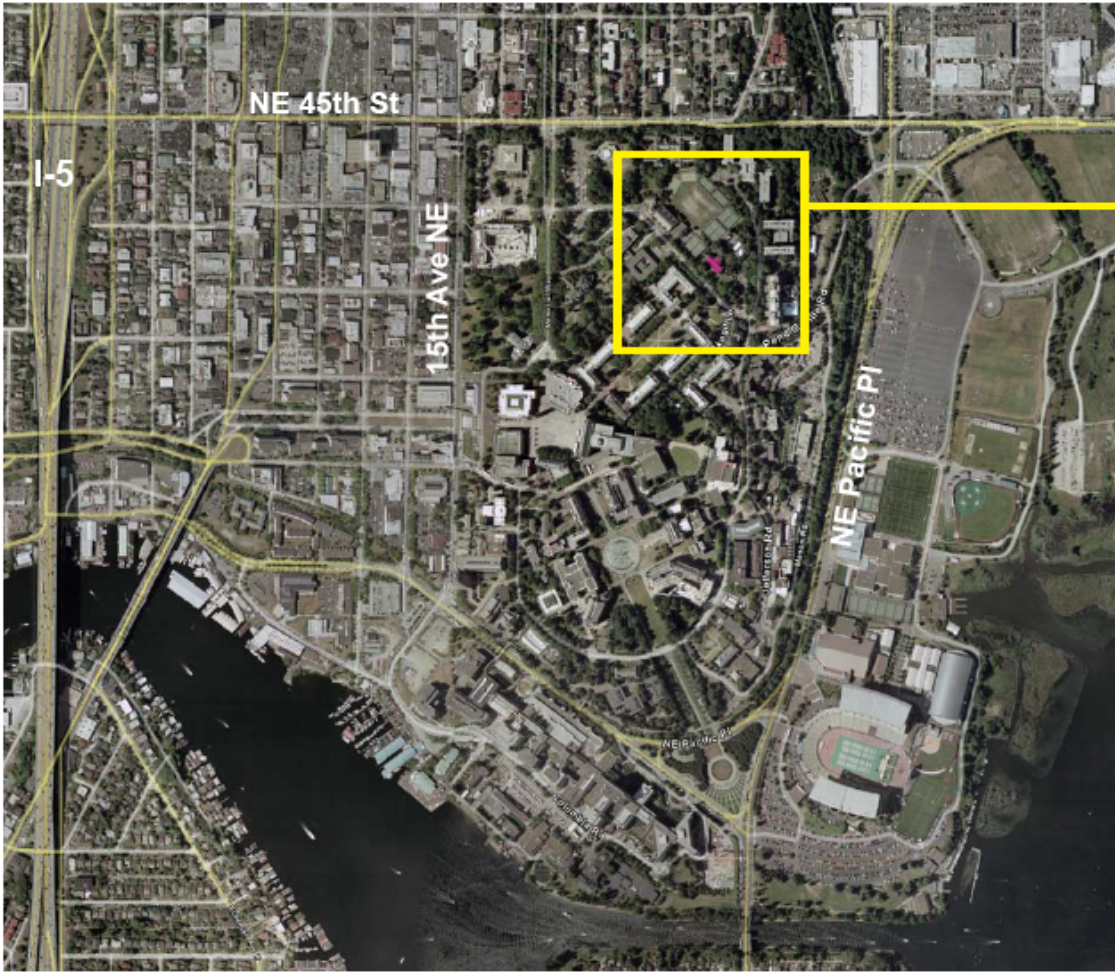
#### *Attachment*

Design Review Update Presentation

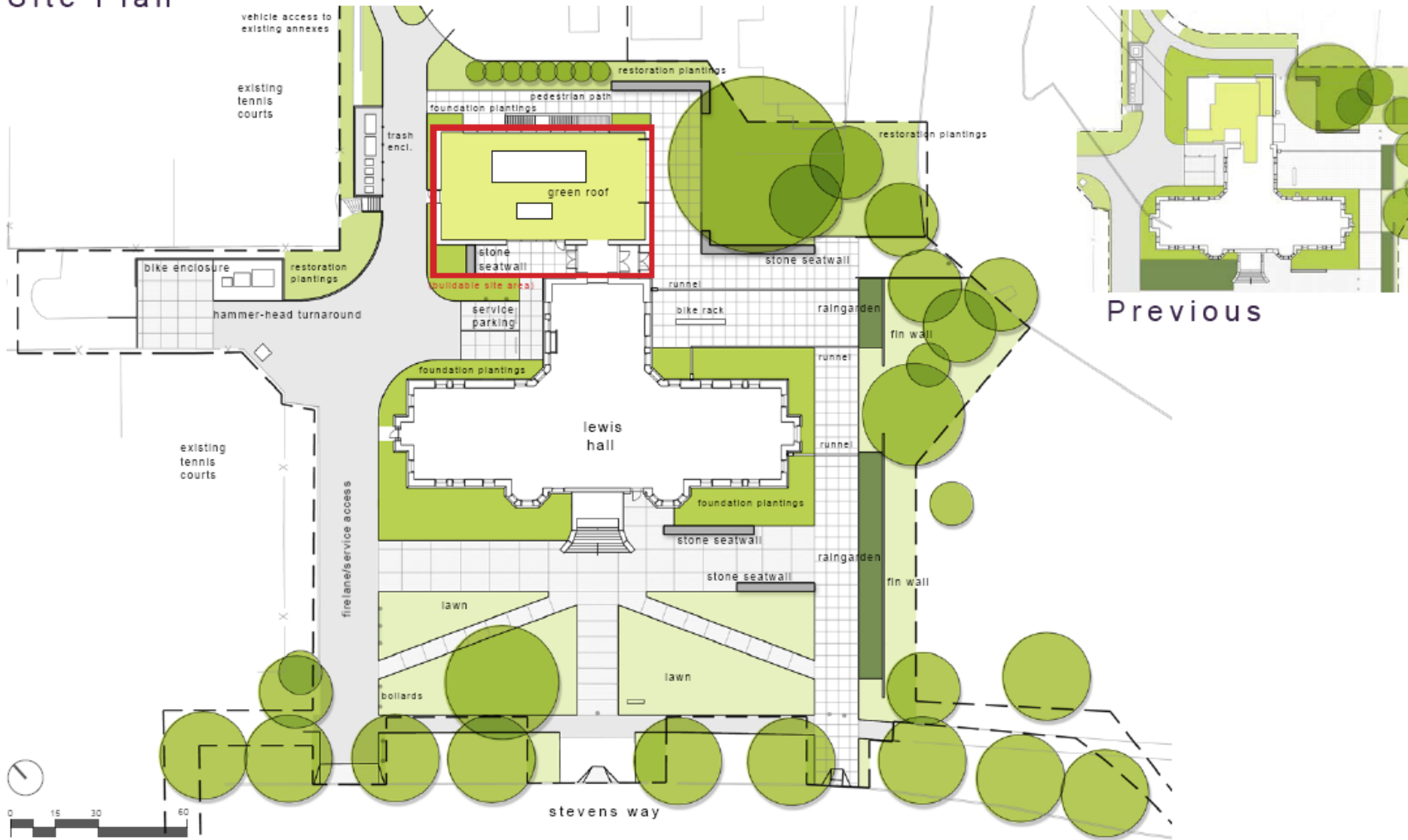


# LEWIS HALL : DESIGN REVIEW UPDATE

# Aerial View / Context



# Site Plan



Previous

# Perspective View



Previous

East Courtyard

# Elevations



Previous East Elevation



East Elevation



Previous North Elevation



North Elevation



# Elevations



Previous West Elevation



West Elevation



Previous West Courtyard



West Courtyard

# Perspective View



East Courtyard