

VII. STANDING COMMITTEES

B. Finance, Audit & Facilities Committee

Report of Contributions – December, 2009

For information only.

*Attachment*

University of Washington Foundation Report of Contributions for December, 2009

The logo is a white, stylized letter 'W' set against a dark purple square background, located in the top right corner of the page.The background image shows a scenic view of the University of Washington campus. In the foreground, a paved walkway leads uphill, flanked by large, leafy green trees. Several people are walking along the path, including a person with a red backpack. In the background, the Gothic-style architecture of a university building is visible under a clear blue sky.

UNIVERSITY of WASHINGTON | *Foundation*

# Report of Contributions

All Areas

December 2009

Report By: University Advancement, Advancement Services, Information Management

## ANNUAL PROGRESS BY CONSTITUENCY

School	Current Month				Year to Date			
	Gifts	Grants	Total	Donors <sup>1</sup>	Gifts	Grants	Total	Donors
UW Medicine	\$5,917,316	\$7,075,760	\$12,993,076	4,174	\$20,925,360	\$56,861,020	\$77,786,379	9,991
Arts and Sciences	\$2,201,751	\$290,070	\$2,491,821	2,779	\$6,046,747	\$4,505,095	\$10,551,842	8,427
Broadcast Services	\$304,972	\$0	\$304,972	841	\$837,275	\$0	\$837,275	1,529
Built Environments	\$606,773	\$0	\$606,773	396	\$764,795	\$151,408	\$916,203	840
Business School	\$7,485,967	\$0	\$7,485,967	913	\$9,469,762	\$30,000	\$9,499,762	2,906
Dentistry	\$1,251,904	\$0	\$1,251,904	277	\$2,253,105	\$241,323	\$2,494,428	890
Education	\$212,483	\$1,216,185	\$1,428,668	205	\$1,005,890	\$2,134,598	\$3,140,488	731
Engineering	\$2,974,580	\$12,500	\$2,987,080	949	\$6,796,547	\$4,184,584	\$10,981,130	3,001
Environment	\$415,037	\$119,991	\$535,028	294	\$3,008,129	\$397,324	\$3,405,452	705
Evans School of Public Affairs	\$4,210	\$10,000	\$14,210	66	\$149,447	\$310,000	\$459,447	194
Forest Resources	\$0	\$0	\$0	0	\$0	\$0	\$0	0
Graduate School	\$111,904	\$0	\$111,904	71	\$807,244	\$0	\$807,244	200
Information School	\$12,913	\$0	\$12,913	108	\$122,956	\$776,250	\$899,206	483
Intercollegiate Athletics	\$1,932,872	\$0	\$1,932,872	1,481	\$5,230,608	\$0	\$5,230,608	5,089
Law	\$220,072	\$0	\$220,072	507	\$750,378	\$2,500	\$752,878	939
Libraries	\$302,835	\$0	\$302,835	464	\$523,527	\$0	\$523,527	1,871
Minority Affairs	\$53,121	\$0	\$53,121	255	\$226,207	\$25,000	\$251,207	367
Nursing	\$381,072	\$564,567	\$945,639	593	\$1,931,765	\$615,911	\$2,547,676	1,026
Ocean and Fishery Sciences	\$288,944	\$283,013	\$571,957	118	\$479,831	\$2,979,345	\$3,459,176	262
Pharmacy	\$251,113	\$0	\$251,113	157	\$706,841	\$1,177,559	\$1,884,400	458
President's Funds	\$83,104	\$0	\$83,104	399	\$259,595	\$0	\$259,595	845
Public Health	\$238,258	\$857,556	\$1,095,815	200	\$538,305	\$11,384,292	\$11,922,597	415
Social Work	\$16,986	\$231,218	\$248,204	185	\$93,164	\$311,466	\$404,630	390
Student Affairs	\$267,640	\$0	\$267,640	543	\$988,851	\$0	\$988,851	1,445
Undergraduate Academic Affairs	\$133,347	\$20,000	\$153,347	168	\$424,934	\$143,276	\$568,210	361
University Press	\$54,410	\$0	\$54,410	44	\$164,705	\$0	\$164,705	71
UW Alumni Association	\$95,655	\$0	\$95,655	1,895	\$388,329	\$0	\$388,329	8,110
UW Bothell	\$222,884	\$0	\$222,884	88	\$319,391	\$759,100	\$1,078,491	228
UW Tacoma	\$190,703	\$0	\$190,703	132	\$1,463,406	\$0	\$1,463,406	407
Other University Support	\$320,813	\$50,000	\$370,813	357	\$890,819	\$276,331	\$1,167,150	920
<b>Total</b>	<b>\$26,553,637</b>	<b>\$10,730,861</b>	<b>\$37,284,497</b>	<b>16,593</b>	<b>\$67,567,914</b>	<b>\$87,266,381</b>	<b>\$154,834,295</b>	<b>46,861</b>

## MONTHLY HIGHLIGHTS

The UW received \$37.28M in total private voluntary support (\$26.55M in gifts and \$10.73M in grants) in the current month.

Areas including UW Medicine, Built Environments, Dentistry, Education, Engineering, Information School, Intercollegiate Athletics, Minority Affairs, Nursing, Pharmacy, Public Health, Social Work, Student Affairs, Undergraduate Academic Affairs, University Press, UW Bothell and UW Tacoma are ahead of last year's year-to-date totals.

<sup>1</sup> Donors are defined as those entities who have a credit amount of greater than \$0.00.

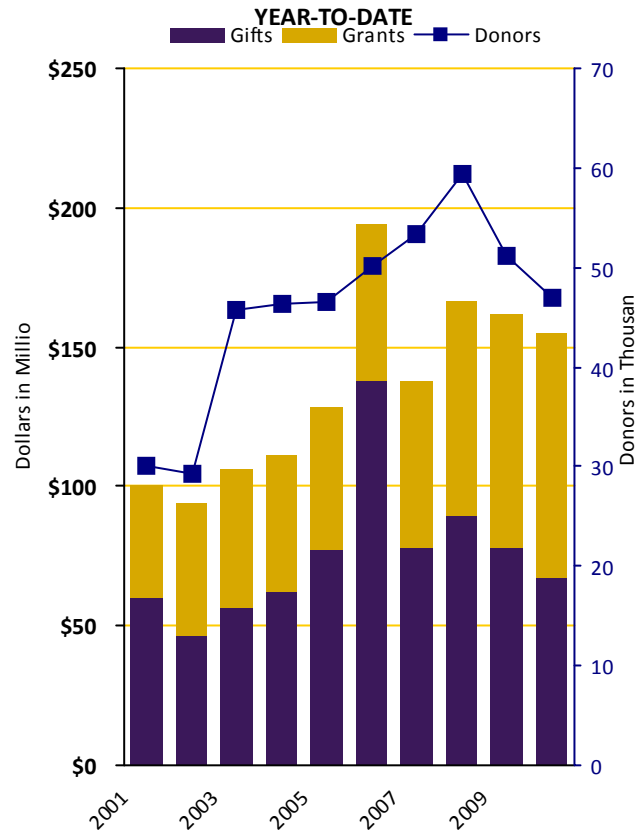
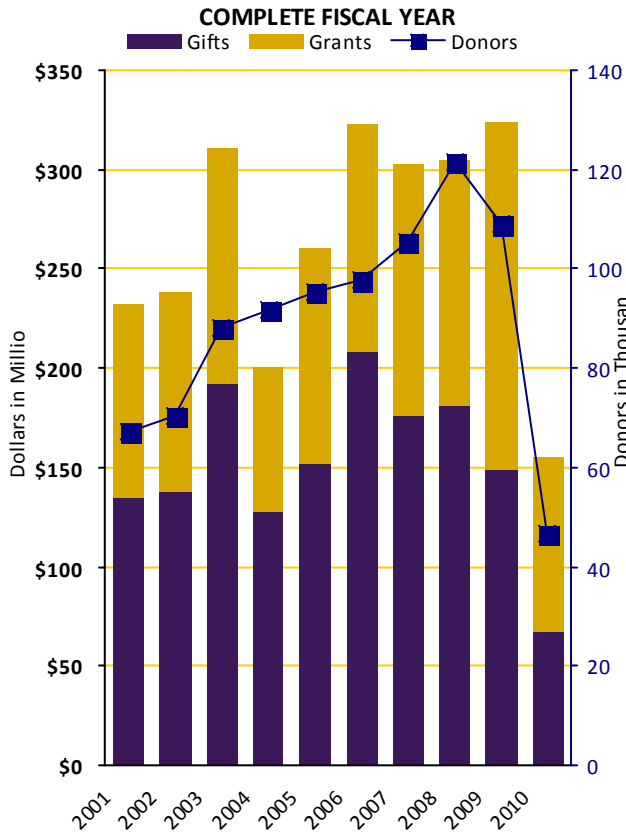
The donor total at the bottom of the chart is not a cumulative total of the rows above. The donor total is the number of unique donors who have been credited with a gift to the UW during the given time period.

**DEVELOPMENT SUMMARY BY CONSTITUENCY**

School	Current Month		Year to Date		Prior Year to Date		Prior Year Total	
	Total	Donors	Total	Donors	Total	Donors	Total	Donors
UW Medicine	\$12,993,076	4,174	\$77,786,379	9,991	\$76,181,628	9,660	\$156,190,821	16,799
Arts and Sciences	\$2,491,821	2,779	\$10,551,842	8,427	\$13,517,753	8,697	\$25,589,815	14,817
Broadcast Services	\$304,972	841	\$837,275	1,529	\$1,351,779	6,946	\$4,427,717	16,191
Built Environments	\$606,773	396	\$916,203	840	\$641,526	691	\$2,127,643	1,341
Business School	\$7,485,967	913	\$9,499,762	2,906	\$18,094,637	2,718	\$25,381,696	4,210
Dentistry	\$1,251,904	277	\$2,494,428	890	\$1,302,465	793	\$2,541,366	1,584
Education	\$1,428,668	205	\$3,140,488	731	\$2,394,240	823	\$3,724,956	1,667
Engineering	\$2,987,080	949	\$10,981,130	3,001	\$9,066,311	2,849	\$18,855,120	4,260
Environment	\$535,028	294	\$3,405,452	705	\$4,645,494	20	\$4,679,781	27
Evans School of Public Affairs	\$14,210	66	\$459,447	194	\$555,275	237	\$2,718,803	480
Forest Resources	\$0	0	\$0	0	\$1,116,912	423	\$3,451,299	1,096
Graduate School	\$111,904	71	\$807,244	200	\$1,104,170	166	\$1,602,622	324
Information School	\$12,913	108	\$899,206	483	\$831,199	438	\$1,679,278	609
Intercollegiate Athletics	\$1,932,872	1,481	\$5,230,608	5,089	\$3,941,297	3,803	\$15,659,243	23,317
Law	\$220,072	507	\$752,878	939	\$1,943,907	910	\$2,665,941	1,935
Libraries	\$302,835	464	\$523,527	1,871	\$539,341	1,235	\$1,171,951	5,280
Minority Affairs	\$53,121	255	\$251,207	367	\$73,601	252	\$388,492	511
Nursing	\$945,639	593	\$2,547,676	1,026	\$2,282,142	1,034	\$3,549,704	1,678
Ocean and Fishery Sciences	\$571,957	118	\$3,459,176	262	\$6,278,106	390	\$10,157,709	740
Pharmacy	\$251,113	157	\$1,884,400	458	\$954,722	389	\$2,098,248	1,034
President's Funds	\$83,104	399	\$259,595	845	\$1,876,615	917	\$5,761,734	1,691
Public Health	\$1,095,815	200	\$11,922,597	415	\$8,605,691	412	\$15,492,932	792
Social Work	\$248,204	185	\$404,630	390	\$141,866	467	\$1,289,956	700
Student Affairs	\$267,640	543	\$988,851	1,445	\$701,933	1,454	\$2,906,525	3,000
Undergraduate Academic Affairs	\$153,347	168	\$568,210	361	\$366,255	193	\$424,576	353
University Press	\$54,410	44	\$164,705	71	\$104,191	73	\$219,219	167
UW Alumni Association	\$95,655	1,895	\$388,329	8,110	\$462,019	9,023	\$1,001,508	19,763
UW Bothell	\$222,884	88	\$1,078,491	228	\$561,246	232	\$2,229,545	592
UW Tacoma	\$190,703	132	\$1,463,406	407	\$1,344,057	329	\$3,656,827	792
Other University Support	\$370,813	357	\$1,167,150	920	\$975,721	1,483	\$2,433,450	2,220
<b>Total<sup>1</sup></b>	<b>\$37,284,497</b>	<b>16,593</b>	<b>\$154,834,295</b>	<b>46,861</b>	<b>\$161,956,099</b>	<b>51,054</b>	<b>\$324,078,477</b>	<b>109,083</b>

<sup>1</sup> The donor total at the bottom of the chart is not a cumulative total of the rows above. The donor total is the number of unique donors who have been credited with a gift to the UW during the given time period.

## FISCAL YEAR COMPARISON OF TOTAL CONTRIBUTIONS



Fiscal Year	Complete Fiscal Year				Year to Date			
	Gifts	Grants	Total	Donors	Gifts	Grants	Total	Donors
2009-2010	\$67,567,914	\$87,266,381	\$154,834,295	46,861	\$67,567,914	\$87,266,381	\$154,834,295	46,861
2008-2009	\$148,364,809	\$175,713,667	\$324,078,477	109,083	\$78,321,572	\$83,634,528	\$161,956,099	51,054
2007-2008	\$180,735,444	\$124,224,214	\$304,959,657	121,447	\$89,445,201	\$77,073,087	\$166,518,288	59,458
2006-2007	\$176,490,215	\$126,399,369	\$302,889,584	105,353	\$78,353,078	\$59,264,713	\$137,617,791	53,294
2005-2006	\$207,744,231	\$115,261,186	\$323,005,417	97,876	\$138,499,322	\$55,494,951	\$193,994,273	50,054
2004-2005	\$151,969,925	\$108,802,371	\$260,772,296	95,227	\$77,689,900	\$50,505,571	\$128,195,471	46,526
2003-2004	\$128,174,367	\$71,603,323	\$199,777,690	91,903	\$62,089,442	\$48,886,946	\$110,976,388	46,351
2002-2003	\$192,573,183	\$118,677,722	\$311,250,905	88,259	\$56,283,917	\$49,383,639	\$105,667,556	45,698
2001-2002	\$137,959,340	\$100,820,547	\$238,779,887	70,560	\$46,825,862	\$46,929,112	\$93,754,975	29,285
2000-2001	\$134,797,642	\$97,112,979	\$231,910,621	67,307	\$59,840,357	\$40,542,569	\$100,382,926	30,185

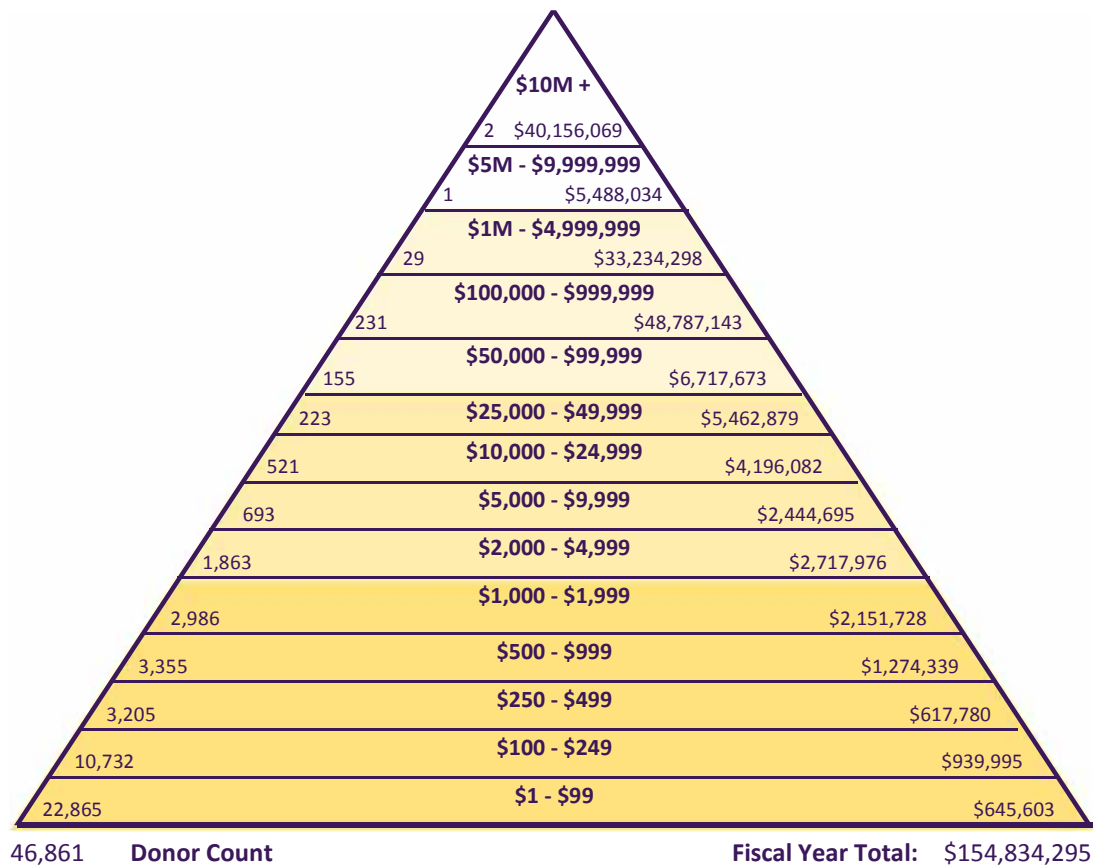
## ANNUAL FUNDING THEME PROGRESS

Theme	Year to Date		
	Current Use	Endowment	Total
Student Support	\$3,930,690	\$9,022,221	\$12,952,911
Faculty Support	\$4,923,984	\$5,531,234	\$10,455,219
Program Support for Faculty and Students	\$107,795,265	\$4,603,807	\$112,399,072
Capital	\$7,186,349	\$2,020	\$7,188,369
Excellence Funds	\$11,694,695	\$144,029	\$11,838,724
<b>Total</b>	<b>\$135,530,983</b>	<b>\$19,303,312</b>	<b>\$154,834,295</b>

## DEVELOPMENT ACTIVITY BY DONOR TYPE

Donor Type	Year to Date		Prior Year to Date		Prior Fiscal Year	
	Donors	Total	Donors	Total	Donors	Total
Alumni	25,725	\$15,659,089	26,038	\$18,623,706	49,981	\$40,529,614
Corporations	1,288	\$21,539,445	1,298	\$25,807,486	3,029	\$79,017,981
Family Foundations	108	\$8,732,371	103	\$8,069,082	173	\$15,996,206
Foundations	251	\$51,344,760	246	\$53,825,844	427	\$83,293,447
Non-Alumni	19,156	\$15,554,195	23,112	\$22,649,297	54,849	\$41,916,304
Organizations	333	\$42,004,433	327	\$32,980,685	624	\$63,324,926
<b>Total</b>	<b>46,861</b>	<b>\$154,834,295</b>	<b>51,124</b>	<b>\$161,956,099</b>	<b>109,083</b>	<b>\$324,078,477</b>

## DEVELOPMENT ACTIVITY PYRAMID



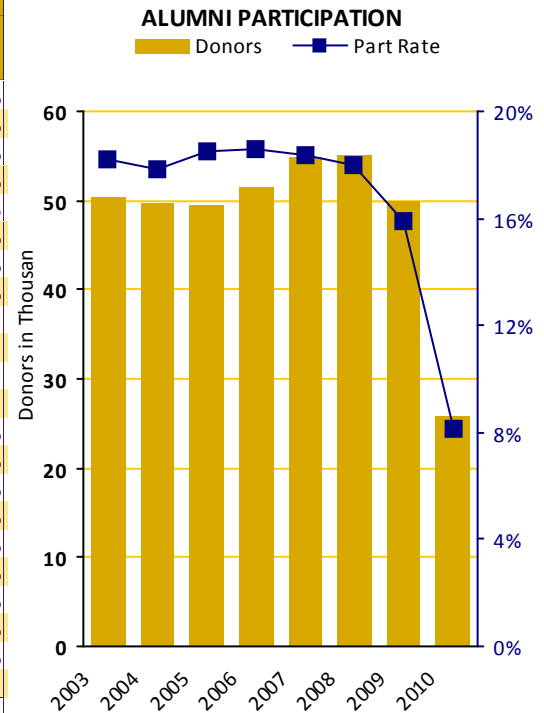
**ANNUAL PROGRESS BY GIVING LEVEL**

Giving Level	Alumni	Non Alumni	Family Fndns.	Corporations	Foundations	Other Orgs.	Total
\$10M +	\$0	\$0	\$0	\$0	\$25,891,093	\$14,264,976	\$40,156,069
\$5M - \$9,999,999	\$0	\$5,488,034	\$0	\$0	\$0	\$0	\$5,488,034
\$1M - \$4,999,999	\$1,074,165	\$0	\$5,023,150	\$4,689,630	\$7,006,504	\$15,440,849	\$33,234,298
\$100,000 - \$999,999	\$5,890,687	\$4,166,747	\$2,381,167	\$11,114,874	\$15,626,537	\$9,607,130	\$48,787,143
\$50,000 - \$99,999	\$1,005,251	\$678,216	\$521,100	\$1,946,436	\$1,481,404	\$1,085,266	\$6,717,673
\$25,000 - \$49,999	\$959,722	\$851,345	\$353,880	\$1,648,941	\$794,196	\$854,795	\$5,462,879
\$10,000 - \$24,999	\$1,245,112	\$859,677	\$297,640	\$1,088,767	\$332,204	\$372,683	\$4,196,082
\$5,000 - \$9,999	\$898,024	\$685,964	\$99,180	\$449,002	\$116,026	\$196,498	\$2,444,695
\$2,000 - \$4,999	\$1,360,430	\$852,298	\$37,361	\$299,001	\$51,719	\$117,168	\$2,717,976
\$1,000 - \$1,999	\$1,099,943	\$794,492	\$16,192	\$172,335	\$27,726	\$41,041	\$2,151,728
\$500 - \$999	\$704,068	\$473,509	\$2,100	\$69,168	\$11,510	\$13,984	\$1,274,339
\$250 - \$499	\$378,344	\$205,959	\$300	\$25,299	\$2,837	\$5,041	\$617,780
\$100 - \$249	\$600,912	\$304,663	\$300	\$28,090	\$2,434	\$3,596	\$939,995
\$1 - \$99	\$442,431	\$193,292	\$1	\$7,902	\$570	\$1,407	\$645,603
<b>Total</b>	<b>\$15,659,089</b>	<b>\$15,554,195</b>	<b>\$8,732,371</b>	<b>\$21,539,445</b>	<b>\$51,344,760</b>	<b>\$42,004,433</b>	<b>\$154,834,295</b>

Giving Level	Alumni	Non Alumni	Family Fndns.	Corporations	Foundations	Other Orgs.	Total
\$10M +	0	0	0	0	1	1	2
\$5M - \$9,999,999	0	1	0	0	0	0	1
\$1M - \$4,999,999	4	4	3	4	5	9	29
\$100,000 - \$999,999	40	56	12	44	46	33	231
\$50,000 - \$99,999	34	44	9	29	23	16	155
\$25,000 - \$49,999	57	57	11	48	25	25	223
\$10,000 - \$24,999	173	194	19	84	27	24	521
\$5,000 - \$9,999	264	273	20	84	21	31	693
\$2,000 - \$4,999	886	781	13	126	17	40	1,863
\$1,000 - \$1,999	1,376	1,395	12	144	23	36	2,986
\$500 - \$999	1,582	1,602	4	125	17	25	3,355
\$250 - \$499	1,680	1,413	1	86	9	16	3,205
\$100 - \$249	5,935	4,513	3	229	21	31	10,732
\$1 - \$99	13,694	8,823	1	285	16	46	22,865
<b>Total</b>	<b>25,725</b>	<b>19,156</b>	<b>108</b>	<b>1,288</b>	<b>251</b>	<b>333</b>	<b>46,861</b>

**ALUMNI PARTICIPATION BY CONSTITUENCY (CURRENT FISCAL YEAR)**

Area	Solicitable	To UW		To Unit	
		Year to Date	Part Rate	Year to Date	Part Rate
UW Medicine	19,127	2,152	11.25%	1,728	9.03%
Arts and Sciences	146,824	10,697	7.29%	4,444	3.03%
Business School	38,262	3,925	10.26%	1,860	4.86%
Built Environments	8,184	696	8.50%	448	5.47%
Dentistry	4,540	682	15.02%	471	10.37%
Education	18,841	1,673	8.88%	174	0.92%
Engineering	32,965	2,892	8.77%	1,889	5.73%
Evans School of Public Affairs	2,496	234	9.38%	78	3.13%
Forest Resources	4,612	261	5.66%		
Interdisc. Grad. Programs	1,817	151	8.31%		
Interdisc. Undergrad. Programs	258	9	3.49%		
Interschool Programs	520	36	6.92%		
Information School	4,614	619	13.42%	376	8.15%
Law	7,905	871	11.02%	584	7.39%
School of Nursing	8,644	1,031	11.93%	750	8.68%
Ocean & Fisheries	4,076	297	7.29%	102	2.50%
Pharmacy	3,547	382	10.77%	251	7.08%
Public Health	4,580	392	8.56%	114	2.49%
Social Work	6,522	528	8.10%	314	4.81%
UW Bothell	6,995	343	4.90%	41	0.59%
UW Tacoma	8,050	316	3.93%	100	1.24%
Unspecified	11,600	1,001	8.63%		
<b>ALL UW TOTAL</b>	<b>317,522</b>	<b>25,725</b>	<b>8.10%</b>		



**ALUMNI PARTICIPATION BY CONSTITUENCY (PREVIOUS FISCAL YEAR)**

Area	Solicitable	To UW				To Unit			
		Year to Date		FY Total		Year to Date		FY Total	
		Donors	Part Rate	Donors	Part Rate	Donors	Part Rate	Donors	PFY Final
UW Medicine	19,109	1,732	9.06%	3,576	18.71%	1,088	5.69%	2,279	11.93%
Arts and Sciences	145,069	10,800	7.44%	21,029	14.50%	4,197	2.89%	6,553	4.52%
Business School	37,913	3,705	9.77%	7,343	19.37%	1,597	4.21%	2,345	6.19%
Built Environments	8,096	700	8.65%	1,410	17.42%	333	4.11%	576	7.11%
Dentistry	4,501	618	13.73%	1,237	27.48%	390	8.66%	722	16.04%
Education	18,944	1,633	8.62%	3,494	18.44%	213	1.12%	620	3.27%
Engineering	32,856	2,765	8.42%	4,994	15.20%	1,605	4.88%	2,374	7.23%
Evans School of Public Affairs	2,394	245	10.23%	529	22.10%	68	2.84%	189	7.89%
Forest Resources	4,601	269	5.85%	713	15.50%	105	2.28%	329	7.15%
Interdisc. Grad. Programs	1,719	130	7.56%	261	15.18%				
Interdisc. Undergrad. Programs	247	14	5.67%	27	10.93%				
Interschool Programs	493	35	7.10%	74	15.01%				
Information School	4,516	558	12.36%	932	20.64%	288	6.38%	395	8.75%
Law	7,755	837	10.79%	1,792	23.11%	495	6.38%	987	12.73%
School of Nursing	8,661	1,034	11.94%	1,804	20.83%	609	7.03%	944	10.90%
Ocean & Fisheries	4,038	328	8.12%	681	16.86%	148	3.67%	335	8.30%
Pharmacy	3,529	340	9.63%	895	25.36%	204	5.78%	594	16.83%
Public Health	4,465	378	8.47%	803	17.98%	116	2.60%	288	6.45%
Social Work	6,428	559	8.70%	972	15.12%	289	4.50%	427	6.64%
UW Bothell	6,635	368	5.55%	799	12.04%	80	1.21%	253	3.81%
UW Tacoma	7,685	315	4.10%	793	10.32%	100	1.30%	305	3.97%
Unspecified	11,813	990	8.38%	2,160	18.28%				
<b>ALL UW TOTAL</b>	<b>314,219</b>	<b>25,058</b>	<b>7.97%</b>	<b>49,980</b>	<b>15.91%</b>				



The University of Washington Alumni Association is the broad-based engagement vehicle for University Advancement and the University of Washington. Through its strategically designed programs, the UW Alumni Association invites alumni, donors and friends to engage in the life of the UW. Research indicates that engaged alumni and friends are more inclined to support the University and its students. The UW Alumni Association is proud to develop a solid base of support for the University of Washington.



## UWAA Member Giving by Constituency

School	Solicitible Alumni	Members <sup>1</sup>	Member Donors	Alumni Giving	
				Members	Non Members
UW Medicine	19,127	1,880	636	33.83%	7.67%
Arts and Sciences	146,824	18,504	3,592	19.41%	3.55%
Business School	38,262	7,113	1,653	23.24%	4.77%
Built Environments	8,184	1,116	226	20.25%	4.54%
Dentistry	4,540	1,006	303	30.12%	7.67%
Education	18,841	3,091	673	21.77%	4.02%
Engineering	32,965	4,500	1,014	22.53%	4.78%
Evans School of Public Affairs	2,496	287	70	24.39%	5.02%
Forest Resources	4,612	644	98	15.22%	2.32%
Interdisc. Grad. Programs	1,817	158	33	20.89%	4.82%
Interdisc. Undergrad. Progra	258	20	2	10.00%	1.68%
Intersch. Programs	520	44	4	9.09%	4.20%
Information School	4,614	748	201	26.87%	8.51%
Law	7,905	1,027	310	30.19%	6.60%
School of Nursing	8,644	1,337	366	27.37%	7.13%
Ocean & Fisheries	4,076	473	91	19.24%	3.86%
Pharmacy	3,547	617	171	27.71%	5.53%
Public Health	4,580	414	108	26.09%	5.30%
Social Work	6,522	603	134	22.22%	5.27%
UW Bothell	6,995	613	59	9.62%	1.97%
UW Tacoma	8,050	613	64	10.44%	1.40%
Unspecified	11,600	2,516	499	19.83%	2.95%
Non-Alumni		7,645	2,931	38.34%	
<b>Total</b>	<b>317,522</b>	<b>52,422</b>	<b>12,095</b>	<b>23.07%</b>	<b>5.43%</b>

## Alumni Activity

<b>1 in 3 registrants at 2009 UW events were UWAA members</b>
<b>1 in 12 registrants at 2009 UW events were UW donors</b>
<b>2 in 3 registrants at 2009 UW events were Solicitable Alumni</b>
<b>1 in 25 UWAA members attended a 2009 UW event</b>
<b>1 in 3 2008-2009 Football/Basketball season ticket holders were UWAA members</b>
<b>1 in 8 UWAA members were 2008-2009 Football/Basketball season ticket holders</b>

## Top 10 Membership by Class Year

Class Year	Part. Rate	Class Year	Population
1955	23.20%	2009	1,423
1953	22.41%	1971	1,103
1946	22.24%	1973	1,063
1959	22.15%	1974	1,052
1954	22.05%	1972	1,026
1952	21.32%	1970	1,025
1956	21.26%	1976	1,012
1950	20.96%	1975	985
1958	20.44%	1977	966
1951	20.41%	2008	913

## Activity Participation - Rolling 3 Year Total

School <sup>2</sup>	Participants	Part. Donors	% Donors	Alum Non-Part.	Alum Non-Par Donor	% Non-Part Donor
UW Medicine	3,225	2,631	81.58%	23,287	3,414	14.66%
Arts and Sciences	10,674	2,747	25.74%	176,410	8,007	4.54%
Built Environments	1,078	514	47.68%	9,383	853	9.09%
Business School	5,116	1,410	27.56%	47,065	3,252	6.91%
Dentistry	1,762	746	42.34%	3,440	354	10.29%
Education	1,587	374	23.57%	27,567	962	3.49%
Engineering	2,210	797	36.06%	42,780	3,217	7.52%
Environment	420	420	100.00%			
Evans School of Public Affairs	543	208	38.31%	2,456	369	15.02%
Graduate School	279	180	64.52%	1,360	2	0.15%
Information School	600	178	29.67%	6,406	550	8.59%
Law	1,721	774	44.97%	9,727	1,202	12.36%
Libraries	740	740	100.00%			
Nursing	810	399	49.26%	11,079	1,398	12.62%
Ocean & Fishery Sciences	311	111	35.69%	4,632	407	8.79%
Pharmacy	347	213	61.38%	4,967	773	15.56%
Public Health	483	183	37.89%	4,171	385	9.23%
Social Work	632	194	30.70%	7,820	721	9.22%
UW Bothell	546	181	33.15%	7,384	616	8.34%
UW Tacoma	355	171	48.17%	9,035	832	9.21%

<sup>1</sup> Members include paid Annual Members, Lifetime Members, and TPC Level Donors

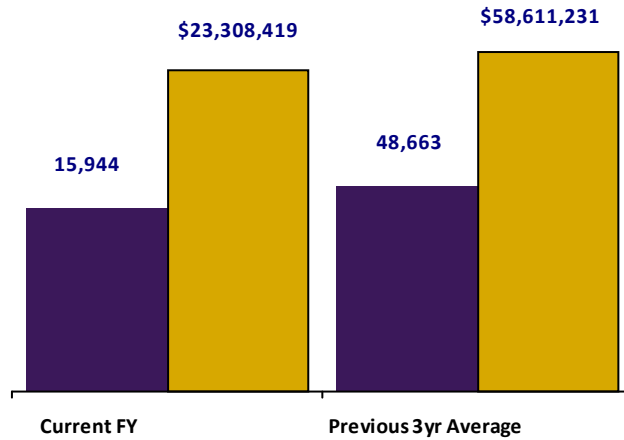
<sup>2</sup> Activity is based on positive RSVP, host, speaker, or participant at a unit event.

Source: University Advancement, Information Management Report # devrpts\_s1001219

Source: University of Washington Alumni Association

## KEY PERFORMANCE INDICATORS

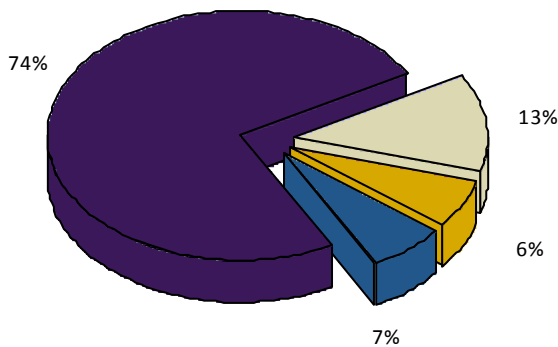
### NEW DONOR ACQUISITION



	New Donors	New Dollars
Current FY	15,944	\$23,308,419
Previous 3yr Average	48,663	\$58,611,231

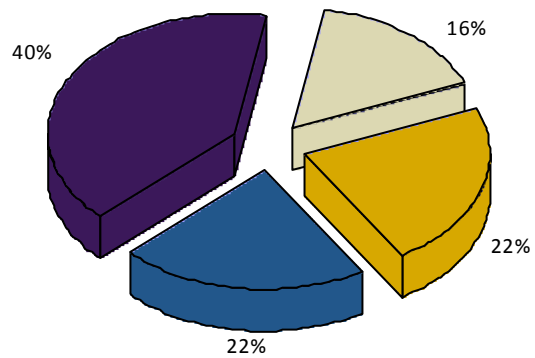
### DONOR RETENTION (CURRENT FY)

- Returning Donor - Decreased Giving
- Returning Donor - Increased Giving
- Returning Donor - Same Giving
- Yet to Return as Donor



### DONOR RETENTION (PREVIOUS 3YR AVG)

- Returning Donor - Decreased Giving
- Returning Donor - Increased Giving
- Returning Donor - Same Giving
- Yet to Return as Donor



	Donors	Dollars		Donors	Dollars
Returning Donor - Decreased Giving	15,383	\$69,624,112	Returning Donor - Decreased Giving	16,124	\$65,278,811
Returning Donor - Increased Giving	7,466	\$59,104,297	Returning Donor - Increased Giving	22,023	\$178,192,234
Returning Donor - Same Giving	8,068	\$2,797,267	Returning Donor - Same Giving	21,414	\$8,169,227
Yet to Return as Donor	90,520		Yet to Return as Donor	39,919	

Donor counts may vary slightly due to donor crediting preferences.  
 Three-year averages are based on fiscal year totals and do not reflect year-to-date status.

## STATE OF THE DATABASE

School	Alumni	Friends	Total	Mailable	Mail %	Phonable	Phone %	Emailable	Email %	Emp Info	Emp %
UW Medicine	23,044	33,192	56,236	51,614	91.78%	30,272	53.83%	12,790	22.74%	17,274	30.72%
Arts and Sciences	181,363	17,226	198,589	166,770	83.98%	76,186	38.36%	48,720	24.53%	53,004	26.69%
Broadcast Services	0	37,354	37,354	36,557	97.87%	14,731	39.44%	4,996	13.37%	6,799	18.20%
Built Environments	9,619	1,660	11,279	10,025	88.88%	5,264	46.67%	2,885	25.58%	4,347	38.54%
Business School	47,113	3,725	50,838	42,850	84.29%	21,840	42.96%	15,344	30.18%	21,772	42.83%
Dentistry	5,110	1,518	6,628	6,137	92.59%	3,946	59.54%	1,924	29.03%	2,058	31.05%
Education	25,406	2,208	27,614	21,199	76.77%	11,217	40.62%	4,203	15.22%	7,946	28.78%
Engineering	41,372	3,800	45,172	37,265	82.50%	18,595	41.16%	10,768	23.84%	17,030	37.70%
Environment	0	3,137	3,137	3,031	96.62%	2,355	75.07%	1,136	36.21%	1,271	40.52%
Evans School of Public Affairs	2,824	479	3,303	3,082	93.31%	1,804	54.62%	1,644	49.77%	1,815	54.95%
Forest Resources	5,670	0	5,670	4,672	82.40%	2,260	39.86%	1,265	22.31%	2,250	39.68%
Graduate School	2,050	954	3,004	2,823	93.97%	1,790	59.59%	1,356	45.14%	1,401	46.64%
Information School	5,853	387	6,240	5,174	82.92%	3,206	51.38%	1,788	28.65%	2,644	42.37%
Intercollegiate Athletics	0	8,910	8,910	8,756	98.27%	6,980	78.34%	4,017	45.08%	3,604	40.45%
Law	8,951	1,623	10,574	9,599	90.78%	5,184	49.03%	5,953	56.30%	4,786	45.26%
Libraries	0	11,560	11,560	11,345	98.14%	9,403	81.34%	2,997	25.93%	2,311	19.99%
Minority Affairs	0	975	975	958	98.26%	748	76.72%	504	51.69%	536	54.97%
Nursing	10,908	1,443	12,351	10,231	82.84%	5,721	46.32%	2,836	22.96%	4,770	38.62%
Ocean and Fishery Sciences	4,976	564	5,540	4,673	84.35%	2,377	42.91%	1,307	23.59%	2,178	39.31%
Pharmacy	4,254	759	5,013	4,347	86.71%	2,511	50.09%	1,380	27.53%	2,225	44.38%
President's Funds	0	3,801	3,801	3,733	98.21%	2,989	78.64%	1,369	36.02%	1,997	52.54%
Public Health	5,254	812	6,066	5,529	91.15%	3,045	50.20%	2,435	40.14%	2,804	46.22%
Social Work	7,911	771	8,682	7,408	85.33%	3,509	40.42%	1,766	20.34%	2,935	33.81%
Student Affairs	0	9,136	9,136	8,996	98.47%	7,033	76.98%	3,492	38.22%	4,077	44.63%
Undergraduate Academic Affairs	0	1,154	1,154	1,114	96.53%	853	73.92%	559	48.44%	435	37.69%
University Press	0	573	573	548	95.64%	401	69.98%	219	38.22%	223	38.92%
UW Alumni Association	0	39,549	39,549	38,651	97.73%	25,060	63.36%	20,059	50.72%	15,469	39.11%
UW Bothell	7,916	849	8,765	8,215	93.73%	4,220	48.15%	3,142	35.85%	1,508	17.20%
UW Tacoma	9,241	854	10,095	9,423	93.34%	4,908	48.62%	3,231	32.01%	1,429	14.16%
Other University Support	953	6,305	7,258	6,922	95.37%	5,018	69.14%	3,416	47.07%	1,949	26.85%
Unspecified School	16,587	0	16,587	11,482	69.22%	6,290	37.92%	1,964	11.84%	3,717	22.41%
No Degree\Gift Affiliation	0	276,296	276,296	249,885	90.44%	148,159	53.62%	27,309	9.88%	49,030	17.75%
<b>Total</b>	<b>394,301</b>	<b>380,473</b>	<b>774,774</b>	<b>676,018</b>	<b>87.25%</b>	<b>358,649</b>	<b>46.29%</b>	<b>139,881</b>	<b>18.05%</b>	<b>187,800</b>	<b>24.24%</b>

## Database Trends

