

VII. STANDING COMMITTEES

B. Finance, Audit and Facilities Committee

UW

Report of
Contributions

University of Washington
University of Washington Foundation

May, 2009



UNIVERSITY OF WASHINGTON

All Areas

REPORT OF CONTRIBUTIONS

May 2009

REPORT BY: UNIVERSITY ADVANCEMENT, ADVANCEMENT SERVICES, INFORMATION MANAGEMENT

ANNUAL PROGRESS BY CONSTITUENCY

School	Current Month				Year to Date			
	Gifts	Grants	Total	Donors ¹	Gifts	Grants	Total	Donors
UW Medicine	\$1,402,860	\$14,198,224	\$15,601,084	2,382	\$29,076,325	\$97,799,380	\$126,875,706	15,706
Arts and Sciences	\$2,295,775	\$313,759	\$2,609,534	1,666	\$17,292,333	\$6,257,164	\$23,549,497	14,203
Broadcast Services	\$769,579	\$0	\$769,579	3,148	\$3,549,737	\$0	\$3,549,737	15,613
Built Environments	\$14,153	\$0	\$14,153	115	\$1,079,041	\$993,000	\$2,072,041	1,295
Business School	\$376,076	\$45,000	\$421,076	254	\$22,960,555	\$45,000	\$23,005,555	3,959
Dentistry	\$131,514	\$0	\$131,514	230	\$1,661,328	\$748,460	\$2,409,788	1,440
Education	\$184,256	\$0	\$184,256	308	\$2,368,092	\$1,002,694	\$3,370,786	1,566
Engineering	\$619,145	\$1,252,239	\$1,871,384	338	\$10,453,701	\$7,140,075	\$17,593,776	4,099
Environment	\$0	\$0	\$0	0	\$4,671,093	\$0	\$4,671,093	27
Evans School of Public Affairs	\$23,148	\$0	\$23,148	54	\$597,374	\$1,922,267	\$2,519,641	418
Forest Resources	\$1,060,737	\$66,504	\$1,127,240	85	\$1,821,173	\$1,561,185	\$3,382,358	1,029
Friday Harbor Labs	\$27,541	\$0	\$27,541	46	\$1,172,300	\$0	\$1,172,300	376
Information School	\$55,741	\$0	\$55,741	52	\$798,376	\$862,000	\$1,660,376	578
Intercollegiate Athletics	\$416,041	\$0	\$416,041	1,391	\$11,557,405	\$0	\$11,557,405	12,353
Minority Affairs	\$26,365	\$0	\$26,365	198	\$175,880	\$200,000	\$375,880	465
Law	\$47,452	\$245,000	\$292,452	175	\$2,330,481	\$245,000	\$2,575,481	1,791
Libraries	\$28,200	\$0	\$28,200	579	\$928,769	\$0	\$928,769	4,885
Nursing	\$69,688	\$0	\$69,688	174	\$2,103,940	\$1,082,211	\$3,186,151	1,584
Ocean and Fishery Sciences	\$71,853	\$214,767	\$286,620	91	\$1,273,343	\$8,338,319	\$9,611,662	708
Pharmacy	\$13,174	\$3,081	\$16,255	120	\$1,098,015	\$601,951	\$1,699,966	985
President's Funds	\$46,588	\$0	\$46,588	166	\$2,924,805	\$0	\$2,924,805	1,612
Public Health	\$20,721	\$1,090,988	\$1,111,708	108	\$753,550	\$14,131,312	\$14,884,861	732
Social Work	\$102,289	\$0	\$102,289	49	\$1,234,156	\$50,100	\$1,284,256	672
Student Affairs	\$103,844	\$0	\$103,844	313	\$2,677,147	\$0	\$2,677,147	2,789
Undergraduate Academic Affairs	\$5,429	\$0	\$5,429	64	\$398,520	\$20,000	\$418,520	340
University Press	\$22,840	\$0	\$22,840	15	\$206,144	\$0	\$206,144	163
UW Alumni Association	\$154,841	\$0	\$154,841	3,394	\$909,352	\$0	\$909,352	18,204
UW Bothell	\$4,866	\$125,000	\$129,866	95	\$261,050	\$1,954,590	\$2,215,640	557
UW Tacoma	\$37,391	\$0	\$37,391	146	\$1,856,639	\$23,965	\$1,880,604	714
Other University Support	\$16,479	\$0	\$16,479	143	\$4,781,784	\$739,791	\$5,521,575	2,021
Total	\$8,148,586	\$17,554,562	\$25,703,147	15,112	\$132,972,409	\$145,718,463	\$278,690,873	95,699

MONTHLY HIGHLIGHTS

The UW received \$25.70M in total private voluntary support (\$8.15M in gifts and \$17.55M in grants) in the current month.

Areas including UW Medicine, Built Environments, Business School, Education, Environment, Forest Resources, Friday Harbor Labs, Minority Affairs, Law, Nursing, Public Health, Student Affairs, Undergraduate Academic Affairs and UW Bothell are ahead of last year's year-to-date totals.

¹ Donors are defined as those entities who have a credit amount of greater than \$0.00.

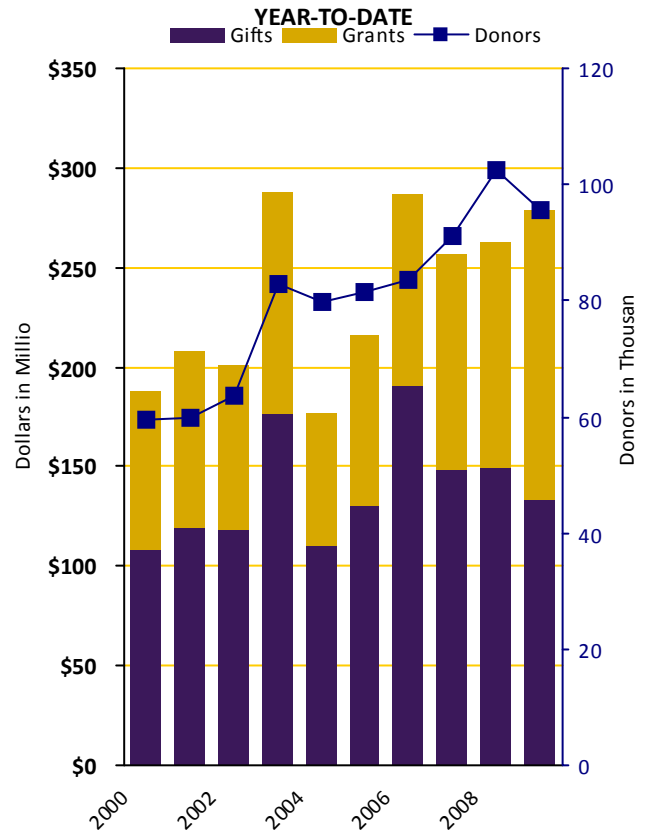
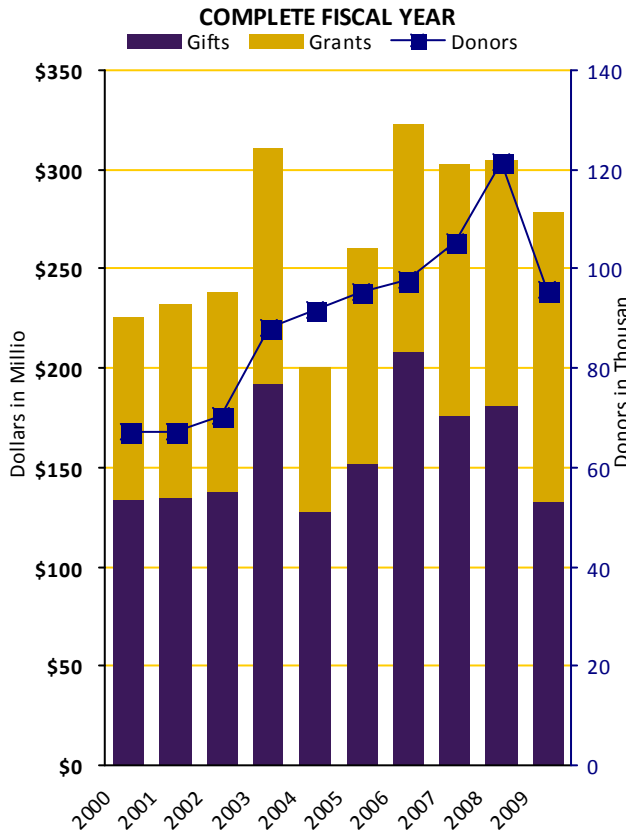
The donor total at the bottom of the chart is not a cumulative total of the rows above. The donor total is the number of unique donors who have been credited with a gift to the UW during the given time period.

DEVELOPMENT SUMMARY BY CONSTITUENCY

School	Current Month		Year to Date		Prior Year to Date		Prior Year Total	
	Total	Donors	Total	Donors	Total	Donors	Total	Donors
UW Medicine	\$15,601,084	2,382	\$126,875,706	15,706	\$115,590,034	17,809	\$128,084,404	18,602
Arts and Sciences	\$2,609,534	1,666	\$23,549,497	14,203	\$29,762,245	14,257	\$36,159,265	15,040
Broadcast Services	\$769,579	3,148	\$3,549,737	15,613	\$7,629,914	16,751	\$12,124,630	21,710
Built Environments	\$14,153	115	\$2,072,041	1,295	\$1,763,786	1,266	\$2,552,681	1,467
Business School	\$421,076	254	\$23,005,555	3,959	\$11,833,987	4,381	\$13,215,754	4,667
Dentistry	\$131,514	230	\$2,409,788	1,440	\$3,372,041	1,261	\$3,479,430	1,340
Education	\$184,256	308	\$3,370,786	1,566	\$2,580,365	1,573	\$2,778,307	1,637
Engineering	\$1,871,384	338	\$17,593,776	4,099	\$18,776,973	4,396	\$22,826,602	4,653
Environment	\$0	0	\$4,671,093	27	\$0	0	\$0	0
Evans School of Public Affairs	\$23,148	54	\$2,519,641	418	\$3,060,352	417	\$3,350,952	493
Forest Resources	\$1,127,240	85	\$3,382,358	1,029	\$2,280,793	1,066	\$2,552,419	1,151
Friday Harbor Labs	\$27,541	46	\$1,172,300	376	\$542,251	437	\$553,591	454
Information School	\$55,741	52	\$1,660,376	578	\$3,280,079	593	\$3,893,390	639
Intercollegiate Athletics	\$416,041	1,391	\$11,557,405	12,353	\$15,924,620	13,485	\$20,268,275	25,073
Minority Affairs	\$26,365	198	\$375,880	465	\$0	0	\$0	0
Law	\$292,452	175	\$2,575,481	1,791	\$2,188,064	2,013	\$2,865,343	2,166
Libraries	\$28,200	579	\$928,769	4,885	\$1,513,881	4,582	\$1,599,016	4,714
Nursing	\$69,688	174	\$3,186,151	1,584	\$3,108,488	1,721	\$3,155,721	1,775
Ocean and Fishery Sciences	\$286,620	91	\$9,611,662	708	\$10,060,495	789	\$12,310,301	829
Pharmacy	\$16,255	120	\$1,699,966	985	\$2,903,663	1,079	\$3,038,164	1,127
President's Funds	\$46,588	166	\$2,924,805	1,612	\$630,650	2,112	\$961,234	2,240
Public Health	\$1,111,708	108	\$14,884,861	732	\$9,351,613	686	\$9,774,188	732
Scholarships and Student Programs	\$0	0	\$0	0	\$6,484,423	5,825	\$7,075,190	6,407
Social Work	\$102,289	49	\$1,284,256	672	\$1,414,079	845	\$1,633,711	895
Student Affairs	\$103,844	313	\$2,677,147	2,789	\$0	0	\$0	0
Undergraduate Academic Affairs	\$5,429	64	\$418,520	340	\$0	0	\$0	0
University Press	\$22,840	15	\$206,144	163	\$402,624	285	\$414,094	293
UW Alumni Association	\$154,841	3,394	\$909,352	18,204	\$966,758	19,072	\$1,146,912	21,851
UW Bothell	\$129,866	95	\$2,215,640	557	\$274,975	720	\$302,577	795
UW Tacoma	\$37,391	146	\$1,880,604	714	\$2,558,602	735	\$4,420,119	967
Other University Support	\$16,479	143	\$5,521,575	2,021	\$4,273,342	2,301	\$4,423,387	2,518
Total¹	\$25,703,147	15,112	\$278,690,873	95,699	\$262,529,098	102,555	\$304,959,657	121,447

¹ The donor total at the bottom of the chart is not a cumulative total of the rows above. The donor total is the number of unique donors who have been credited with a gift to the UW during the given time period.

FISCAL YEAR COMPARISON OF TOTAL CONTRIBUTIONS



Fiscal Year	Complete Fiscal Year				Year to Date			
	Gifts	Grants	Total	Donors	Gifts	Grants	Total	Donors
2008-2009	\$132,972,409	\$145,718,463	\$278,690,873	95,699	\$132,972,409	\$145,718,463	\$278,690,873	95,699
2007-2008	\$180,735,444	\$124,224,214	\$304,959,657	121,447	\$149,374,507	\$113,154,591	\$262,529,098	102,555
2006-2007	\$176,490,215	\$126,399,369	\$302,889,584	105,353	\$148,440,970	\$107,907,490	\$256,348,460	91,213
2005-2006	\$207,744,231	\$115,261,186	\$323,005,417	97,876	\$190,107,545	\$96,947,162	\$287,054,707	83,616
2004-2005	\$151,969,925	\$108,802,371	\$260,772,296	95,227	\$130,236,981	\$85,036,054	\$215,273,035	81,488
2003-2004	\$128,174,367	\$71,603,323	\$199,777,690	91,903	\$110,607,045	\$65,698,478	\$176,305,523	79,741
2002-2003	\$192,573,183	\$118,677,722	\$311,250,905	88,259	\$176,755,934	\$111,251,784	\$288,007,718	82,892
2001-2002	\$137,959,340	\$100,820,547	\$238,779,887	70,560	\$118,125,206	\$82,636,715	\$200,761,921	63,450
2000-2001	\$134,797,642	\$97,112,979	\$231,910,621	67,307	\$119,227,091	\$88,148,568	\$207,375,659	59,797
1999-2000	\$134,037,997	\$91,536,165	\$225,574,162	67,351	\$108,698,852	\$78,589,207	\$187,288,059	59,407

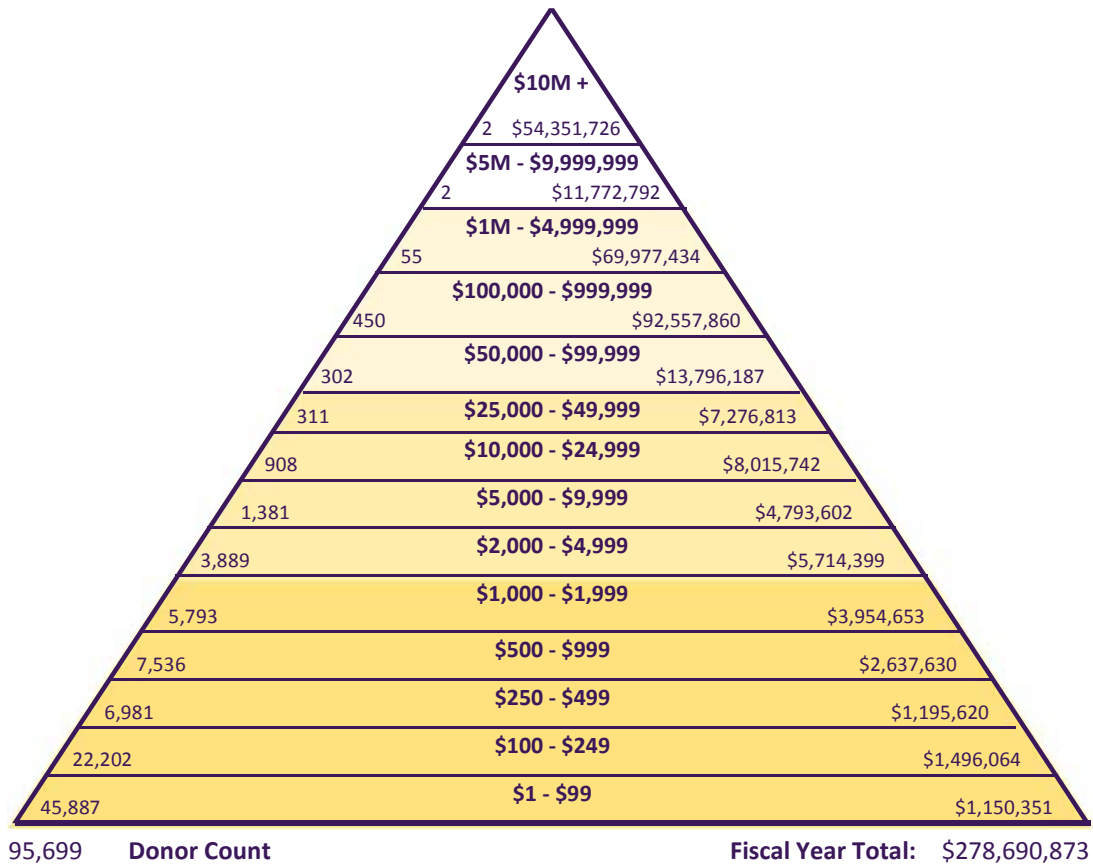
ANNUAL FUNDING THEME PROGRESS

Theme	Year to Date		
	Current Use	Endowment	Total
Student Support	\$7,751,025	\$17,067,905	\$24,818,930
Faculty Support	\$5,583,684	\$13,091,484	\$18,675,168
Program Support for Faculty and Students	\$174,091,789	\$16,117,388	\$190,209,177
Capital	\$18,203,296	\$1,619	\$18,204,915
Excellence Funds	\$24,225,671	\$2,557,012	\$26,782,683
Total	\$229,855,465	\$48,835,408	\$278,690,873

DEVELOPMENT ACTIVITY BY DONOR TYPE

Donor Type	Year to Date		Prior Year to Date		Prior Fiscal Year	
	Donors	Total	Donors	Total	Donors	Total
Alumni	44,508	\$35,160,667	48,409	\$49,587,850	55,089	\$57,128,097
Corporations	2,534	\$55,668,393	2,781	\$52,845,513	3,255	\$61,590,177
Family Foundations	162	\$12,764,656	166	\$11,339,302	172	\$13,349,493
Foundations	391	\$78,911,849	401	\$69,860,959	431	\$75,371,489
Non-Alumni	47,540	\$38,948,305	50,424	\$29,998,793	61,914	\$40,209,765
Organizations	564	\$57,237,003	537	\$48,896,681	586	\$57,285,487
Total	95,699	\$278,690,873	102,718	\$262,529,098	121,447	\$304,934,507

DEVELOPMENT ACTIVITY PYRAMID



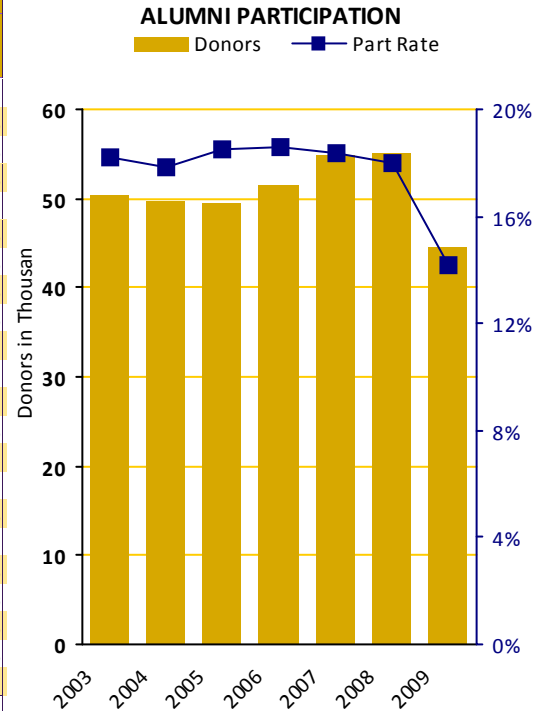
ANNUAL PROGRESS BY GIVING LEVEL

Giving Level	Alumni	Non Alumni	Family Fndns.	Corporations	Foundations	Other Orgs.	Total
\$10M +	\$0	\$0	\$0	\$0	\$38,531,520	\$15,820,206	\$54,351,726
\$5M - \$9,999,999	\$0	\$6,650,000	\$0	\$0	\$0	\$5,122,792	\$11,772,792
\$1M - \$4,999,999	\$9,444,585	\$10,499,129	\$6,438,543	\$13,567,783	\$16,501,059	\$13,526,334	\$69,977,434
\$100,000 - \$999,999	\$10,547,169	\$10,436,857	\$4,705,662	\$29,842,090	\$18,845,315	\$18,180,766	\$92,557,860
\$50,000 - \$99,999	\$1,694,921	\$1,537,025	\$535,112	\$5,034,383	\$2,835,072	\$2,159,674	\$13,796,187
\$25,000 - \$49,999	\$1,127,502	\$1,269,213	\$514,725	\$2,233,294	\$1,048,371	\$1,083,708	\$7,276,813
\$10,000 - \$24,999	\$2,037,858	\$1,565,795	\$369,926	\$2,468,417	\$770,766	\$802,980	\$8,015,742
\$5,000 - \$9,999	\$1,852,119	\$1,275,311	\$110,304	\$1,099,603	\$201,123	\$255,142	\$4,793,602
\$2,000 - \$4,999	\$2,744,603	\$1,864,787	\$59,751	\$753,248	\$110,746	\$181,264	\$5,714,399
\$1,000 - \$1,999	\$1,923,994	\$1,526,062	\$27,432	\$370,992	\$44,314	\$61,859	\$3,954,653
\$500 - \$999	\$1,452,144	\$964,602	\$2,550	\$182,711	\$12,761	\$22,862	\$2,637,630
\$250 - \$499	\$692,819	\$432,828	\$250	\$55,105	\$5,150	\$9,469	\$1,195,620
\$100 - \$249	\$905,125	\$530,548	\$350	\$46,726	\$4,955	\$8,359	\$1,496,064
\$1 - \$99	\$737,827	\$396,146	\$50	\$14,042	\$697	\$1,589	\$1,150,351
Total	\$35,160,667	\$38,948,305	\$12,764,656	\$55,668,393	\$78,911,849	\$57,237,003	\$278,690,873

Giving Level	Alumni	Non Alumni	Family Fndns.	Corporations	Foundations	Other Orgs.	Total
\$10M +	0	0	0	0	1	1	2
\$5M - \$9,999,999	0	1	0	0	0	1	2
\$1M - \$4,999,999	11	15	4	9	8	8	55
\$100,000 - \$999,999	76	114	27	115	61	57	450
\$50,000 - \$99,999	63	79	11	74	41	34	302
\$25,000 - \$49,999	64	97	17	69	34	30	311
\$10,000 - \$24,999	260	344	26	173	53	52	908
\$5,000 - \$9,999	551	544	22	190	31	43	1,381
\$2,000 - \$4,999	1,736	1,729	21	299	38	66	3,889
\$1,000 - \$1,999	2,521	2,840	25	322	35	50	5,793
\$500 - \$999	3,548	3,600	4	321	22	41	7,536
\$250 - \$499	3,183	3,555	1	195	16	31	6,981
\$100 - \$249	9,565	12,151	3	381	33	69	22,202
\$1 - \$99	22,930	22,471	1	386	18	81	45,887
Total	44,508	47,540	162	2,534	391	564	95,699

ALUMNI PARTICIPATION BY CONSTITUENCY (CURRENT FISCAL YEAR)

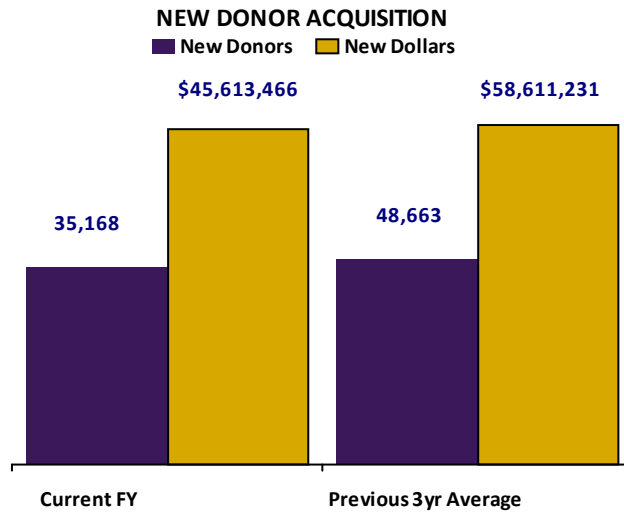
Area	Solicitable	To UW		To Unit	
		Year to Date	Part Rate	Year to Date	Part Rate
UW Medicine	19,109	3,287	17.20%	2,184	11.43%
Arts and Sciences	145,069	18,706	12.89%	6,394	4.41%
Business School	37,913	6,322	16.68%	2,229	5.88%
Built Environments	8,096	1,296	16.01%	573	7.08%
Dentistry	4,501	1,113	24.73%	670	14.89%
Education	18,944	3,060	16.15%	600	3.17%
Engineering	32,856	4,470	13.60%	2,306	7.02%
Evans School of Public Affairs	2,394	489	20.43%	199	8.31%
Forest Resources	4,601	644	14.00%	343	7.45%
Interdisc. Grad. Programs	1,719	236	13.73%		
Interdisc. Undergrad. Programs	247	23	9.31%		
Interscholar Programs	493	68	13.79%		
Information School	4,516	860	19.04%	379	8.39%
Law	7,755	1,607	20.72%	924	11.91%
School of Nursing	8,661	1,658	19.14%	920	10.62%
Ocean & Fisheries	4,038	625	15.48%	324	8.02%
Pharmacy	3,529	809	22.92%	577	16.35%
Public Health	4,465	749	16.77%	283	6.34%
Social Work	6,428	910	14.16%	417	6.49%
UW Bothell	6,635	732	11.03%	266	4.01%
UW Tacoma	7,685	687	8.94%	331	4.31%
Unspecified	11,813	1,832	15.51%		
ALL UW TOTAL	314,219	44,508	14.16%		



ALUMNI PARTICIPATION BY CONSTITUENCY (PREVIOUS FISCAL YEAR)

Area	Solicitable	To UW				To Unit			
		Year to Date		FY Total		Year to Date		FY Total	
		Donors	Part Rate	Donors	Part Rate	Donors	Part Rate	Donors	PFY Final
UW Medicine	18,010	3,329	18.48%	3,822	21.22%	2,127	11.81%	2,243	12.45%
Arts and Sciences	141,595	18,977	13.40%	23,047	16.28%	5,713	4.03%	5,948	4.20%
Business School	37,430	6,813	18.20%	8,231	21.99%	2,416	6.45%	2,559	6.84%
Built Environments	7,965	1,278	16.05%	1,563	19.62%	565	7.09%	617	7.75%
Dentistry	4,579	1,097	23.96%	1,215	26.53%	597	13.04%	627	13.69%
Education	18,902	3,307	17.50%	3,870	20.47%	573	3.03%	589	3.12%
Engineering	32,393	4,731	14.61%	5,569	17.19%	2,194	6.77%	2,310	7.13%
Evans School of Public Affairs	2,329	511	21.94%	619	26.58%	176	7.56%	190	8.16%
Forest Resources	4,603	678	14.73%	801	17.40%	312	6.78%	324	7.04%
Interdisc. Grad. Programs	1,622	241	14.86%	293	18.06%				
Interdisc. Undergrad. Programs	225	8	3.56%	22	9.78%				
Interscholar Programs	453	47	10.38%	70	15.45%				
Information School	4,370	860	19.68%	1,004	22.97%	376	8.60%	405	9.27%
Law	7,780	1,701	21.86%	1,942	24.96%	1,038	13.34%	1,086	13.96%
School of Nursing	8,598	1,743	20.27%	1,980	23.03%	993	11.55%	1,018	11.84%
Ocean & Fisheries	3,911	648	16.57%	788	20.15%	323	8.26%	331	8.46%
Pharmacy	3,426	878	25.63%	997	29.10%	619	18.07%	648	18.91%
Public Health	4,318	691	16.00%	793	18.36%	263	6.09%	276	6.39%
Social Work	6,404	943	14.73%	1,105	17.25%	469	7.32%	496	7.75%
UW Bothell	6,084	651	10.70%	873	14.35%	212	3.48%	224	3.68%
UW Tacoma	7,003	631	9.01%	927	13.24%	247	3.53%	313	4.47%
Unspecified	10,866	2,050	18.87%	2,433	22.39%				
ALL UW TOTAL	305,971	45,903	15.00%	55,089	18.00%				

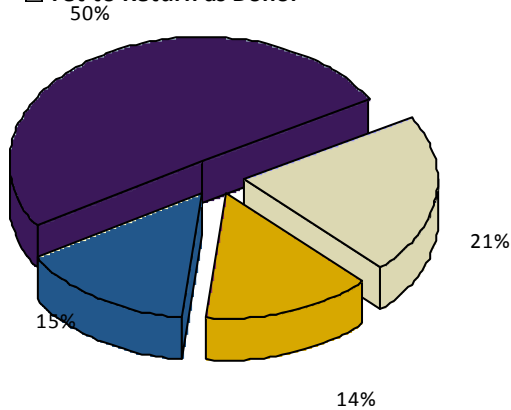
KEY PERFORMANCE INDICATORS



	New Donors	New Dollars
Current FY	35,168	\$45,613,466
Previous 3yr Average	48,663	\$58,611,231

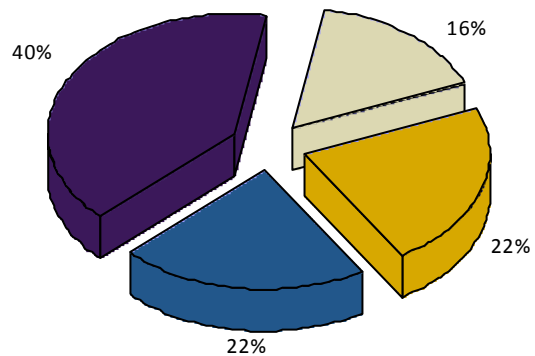
DONOR RETENTION (CURRENT FY)

- Returning Donor - Decreased Giving
- Returning Donor - Increased Giving
- Returning Donor - Same Giving
- Yet to Return as Donor



DONOR RETENTION (PREVIOUS 3YR AVG)

- Returning Donor - Decreased Giving
- Returning Donor - Increased Giving
- Returning Donor - Same Giving
- Yet to Return as Donor



	Donors	Dollars		Donors	Dollars
Returning Donor - Decreased Giving	25,162	\$62,154,014	Returning Donor - Decreased Giving	16,124	\$65,278,811
Returning Donor - Increased Giving	17,175	\$164,162,245	Returning Donor - Increased Giving	22,023	\$178,192,234
Returning Donor - Same Giving	18,194	\$6,761,148	Returning Donor - Same Giving	21,414	\$8,169,227
Yet to Return as Donor	60,911		Yet to Return as Donor	39,919	

Donor counts may vary slightly due to donor crediting preferences.
 Three-year averages are based on fiscal year totals and do not reflect year-to-date status.

STATE OF THE DATABASE

School	Alumni	Friends	Total	Mailable	Mail %	Phonable	Phone %	Emailable	Email %	Emp Info	Emp %
UW Medicine	22,813	37,543	60,356	55,748	92.37%	32,888	54.49%	12,823	21.25%	18,075	29.95%
Arts and Sciences	178,249	18,854	197,103	166,289	84.37%	76,691	38.91%	43,780	22.21%	52,931	26.85%
Broadcast Services	0	43,036	43,036	42,380	98.48%	18,237	42.38%	5,100	11.85%	7,185	16.70%
Built Environments	9,461	1,734	11,195	9,965	89.01%	5,267	47.05%	2,631	23.50%	4,318	38.57%
Business School	46,366	3,926	50,292	42,503	84.51%	21,716	43.18%	14,126	28.09%	21,459	42.67%
Dentistry	5,057	1,617	6,674	6,205	92.97%	4,004	59.99%	1,779	26.66%	2,040	30.57%
Education	25,316	2,485	27,801	21,455	77.17%	11,484	41.31%	3,945	14.19%	8,024	28.86%
Engineering	40,897	4,067	44,964	37,234	82.81%	18,763	41.73%	10,116	22.50%	17,044	37.91%
Environment	0	35	35	35	100.00%	27	77.14%	20	57.14%	16	45.71%
Evans School of Public Affairs	2,714	591	3,305	3,095	93.65%	1,855	56.13%	1,479	44.75%	1,817	54.98%
Forest Resources	5,640	1,712	7,352	6,306	85.77%	3,583	48.74%	1,621	22.05%	2,713	36.90%
Graduate School	1,966	1,250	3,216	3,048	94.78%	2,038	63.37%	1,446	44.96%	1,524	47.39%
Information School	5,709	403	6,112	5,081	83.13%	3,197	52.31%	1,651	27.01%	2,495	40.82%
Intercollegiate Athletics	0	8,865	8,865	8,726	98.43%	6,909	77.94%	3,851	43.44%	3,615	40.78%
Minority Affairs	0	984	984	969	98.48%	753	76.52%	488	49.59%	546	55.49%
Law	8,779	1,761	10,540	9,672	91.76%	5,208	49.41%	4,186	39.72%	4,737	44.94%
Libraries	0	12,305	12,305	12,145	98.70%	10,442	84.86%	2,379	19.33%	2,222	18.06%
Nursing	10,765	1,496	12,261	10,187	83.08%	5,748	46.88%	2,647	21.59%	4,787	39.04%
Ocean and Fishery Sciences	4,923	828	5,751	4,899	85.19%	2,569	44.67%	1,309	22.76%	2,276	39.58%
Pharmacy	4,214	847	5,061	4,409	87.12%	2,570	50.78%	1,345	26.58%	2,248	44.42%
President's Funds	0	4,119	4,119	4,047	98.25%	3,256	79.05%	1,400	33.99%	2,221	53.92%
Public Health	5,117	854	5,971	5,468	91.58%	3,063	51.30%	2,367	39.64%	2,806	46.99%
Social Work	7,781	847	8,628	7,397	85.73%	3,539	41.02%	1,668	19.33%	2,958	34.28%
Student Affairs	0	9,692	9,692	9,560	98.64%	7,512	77.51%	3,467	35.77%	4,366	45.05%
Undergraduate Academic Affairs	0	1,050	1,050	1,022	97.33%	786	74.86%	452	43.05%	424	40.38%
University Press	0	813	813	780	95.94%	554	68.14%	258	31.73%	296	36.41%
UW Alumni Association	0	42,935	42,935	42,124	98.11%	27,931	65.05%	19,371	45.12%	17,063	39.74%
UW Bothell	7,490	919	8,409	7,911	94.08%	4,072	48.42%	2,741	32.60%	1,480	17.60%
UW Tacoma	8,594	961	9,555	8,985	94.03%	4,649	48.66%	2,692	28.17%	1,394	14.59%
Other University Support	861	7,687	8,548	8,217	96.13%	6,174	72.23%	3,651	42.71%	2,113	24.72%
Unspecified School	16,741	0	16,741	11,744	70.15%	6,530	39.01%	1,893	11.31%	3,744	22.36%
No Degree\Gift Affiliation	0	260,678	260,678	237,245	91.01%	147,624	56.63%	28,984	11.12%	47,114	18.07%
Total	387,826	378,004	765,830	672,287	87.79%	365,905	47.78%	131,909	17.22%	185,623	24.24%

Database Trends

