

Changes in Information Systems (IS) and Information Management (IM)

Phyllis Wise, *Provost and Vice President, Academic Affairs*

Sara Gomez, *Vice Provost for Information Management and CIO*

Ron Johnson, *Vice President for Computing and Communications*

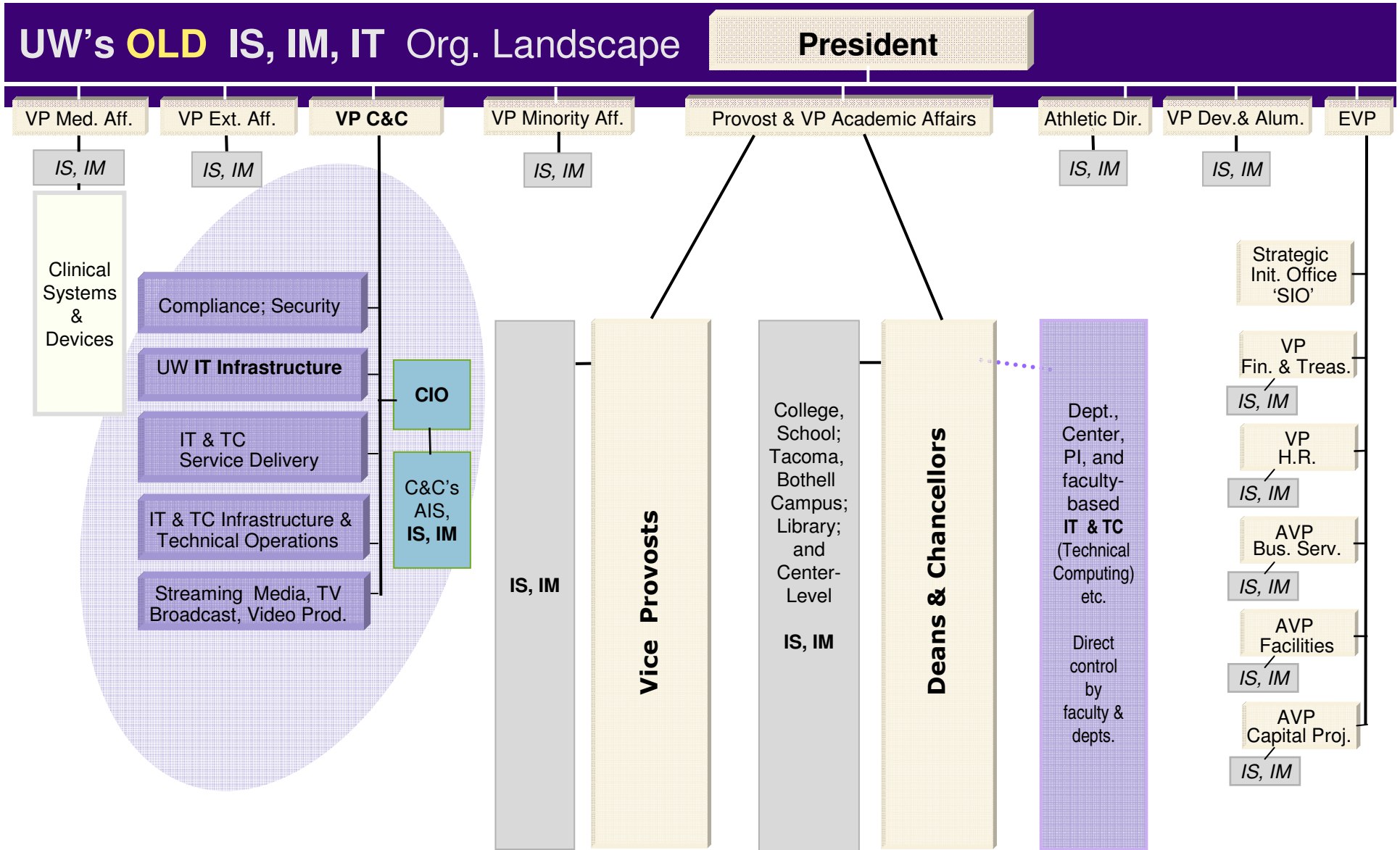
Improve Information Systems (IS) and Information Management (IM)

- IS Futures report
- C&C strategic planning
- TACs, deans, and many others
- Benchmark with other major research universities
- Take advantage of major reorganization in UW administration
- Evolving state ISB requirements/relationship

Office of Information Management (OIM) Overview

- **Created by** Provost and Vice President for Computing and Communications in November 2006
- **Charged with** directing information management and information systems throughout the University of Washington
- **Headed by** interim Vice Provost and Chief Information Officer (VP-IM/CIO) Sara Gomez. The VP-IM/CIO:
 - Provides university-wide leadership in developing and managing information systems and applications
 - Reports primarily to the Provost, but also to the Vice President for Computing and Communications on technology issues

UW's OLD IS, IM, IT Org. Landscape



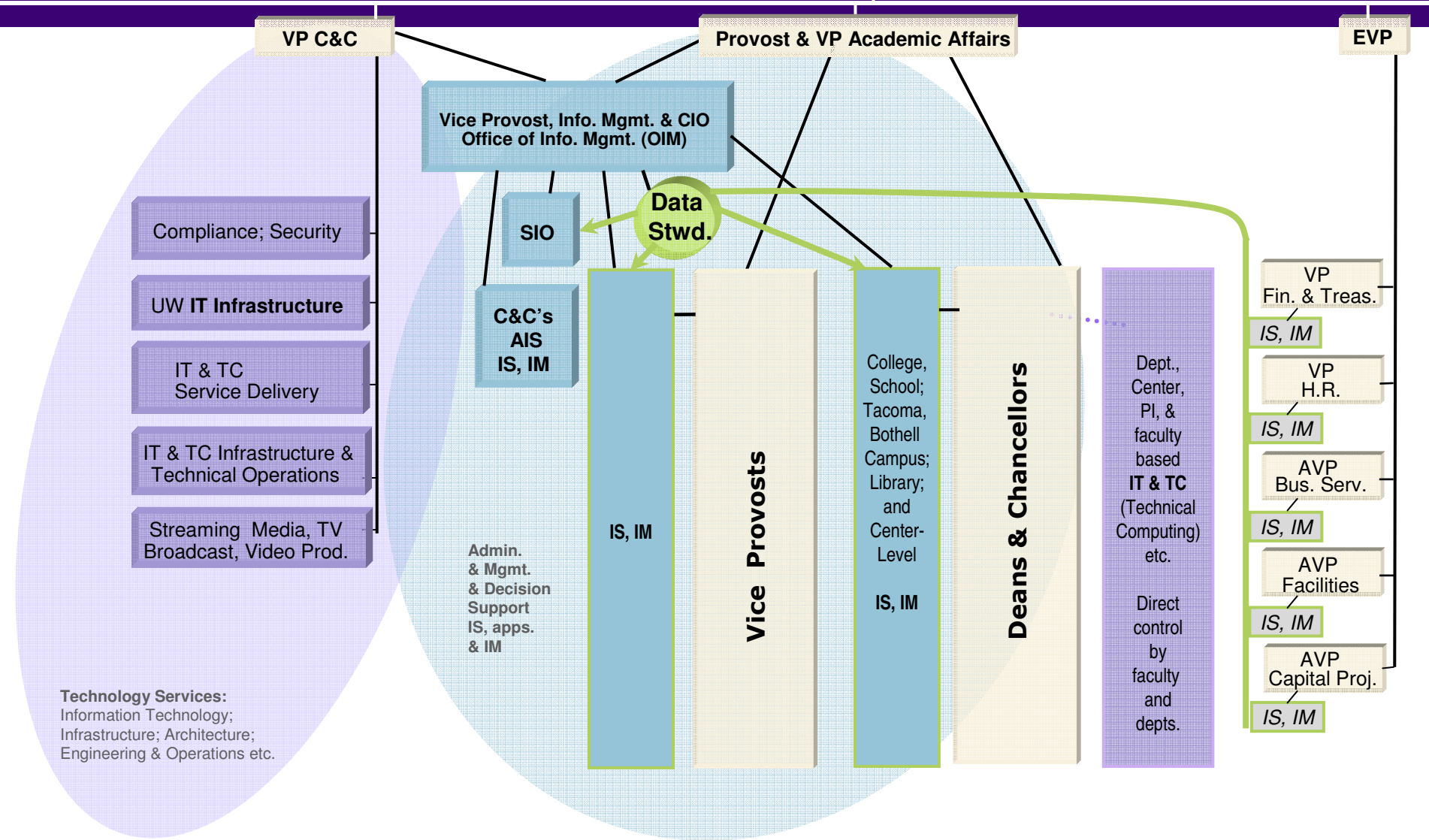
IS = Administrative, Management and/or Decision Support 'Information Systems'. Includes Applications design, development, and maintenance. Also includes control of IS & IM applications operation. No one had/has any overarching/cross-silo' authority or responsibility for IS.
IM = 'Information Management'. At best, only done locally, not done globally across the UW.

IT = **Information Technology infrastructure, design, engineering, architecture, deployment and operations.** Includes hardware, networks, underlying email, messaging and web infrastructure, middleware, distribution systems, and support. Includes Technical Computing, instruments etc,

- Direct 'Line' Reporting relationship
- 'Dotted line' Reporting Relationship
- No institutional IM
- UW-wide IS & IM Some Responsibility, little Authority
- Largely separate IS/IM authorities/responsibilities
- 'IT' activities - central, departmental, PI etc.

UW's NEW IS, IM, IT Org. Landscape

President



Technology Services:
Information Technology;
Infrastructure; Architecture;
Engineering & Operations etc.

IS = Administrative, Management and/or Decision Support **Information Systems**. Includes Applications design, development, and maintenance. Also includes control of IS & IM applications operation.

IM = **Information Management** systems, information architecture, knowledge architecture, and other IM responsibilities & activities, incl. 'data definition', 'data administration', warehousing, data validation & evaluation.

IT = **Information Technology infrastructure, design, engineering, architecture, deployment and operations**. Includes hardware, networks, underlying email, messaging and web infrastructure, middleware, distribution systems, and support. Includes Technical Computing, instruments etc.

- Direct 'Line' Reporting relationship
- 'Dotted line' Reporting Relationship
- IM: Provost, CIO/VP-IM & Data Steward's IM Authority
- Provost's & CIO/VP-IM IS & IM Authority
- 'IT' activities - central, departmental, PI etc.

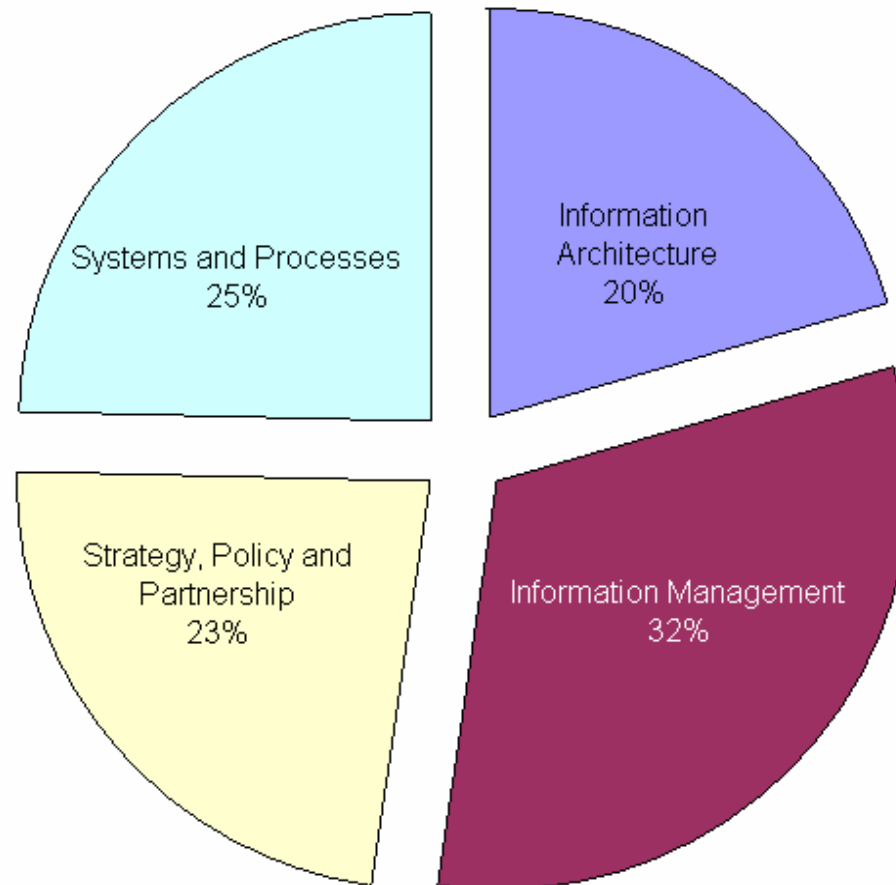
OIM's Three-Phase Work Plan

- **Discovery/Assessment:** Identify challenges and opportunities (Winter 2006-07)
- **Organizational Design and Transition:** Build the future of how we work together (Spring 2007)
- **Strategic Roadmap:** Choose where to invest people, money, and time
 - **Short-term priorities** (Spring/Summer 2007)
 - **Long-term priorities** (Fall/Winter 2007-08)

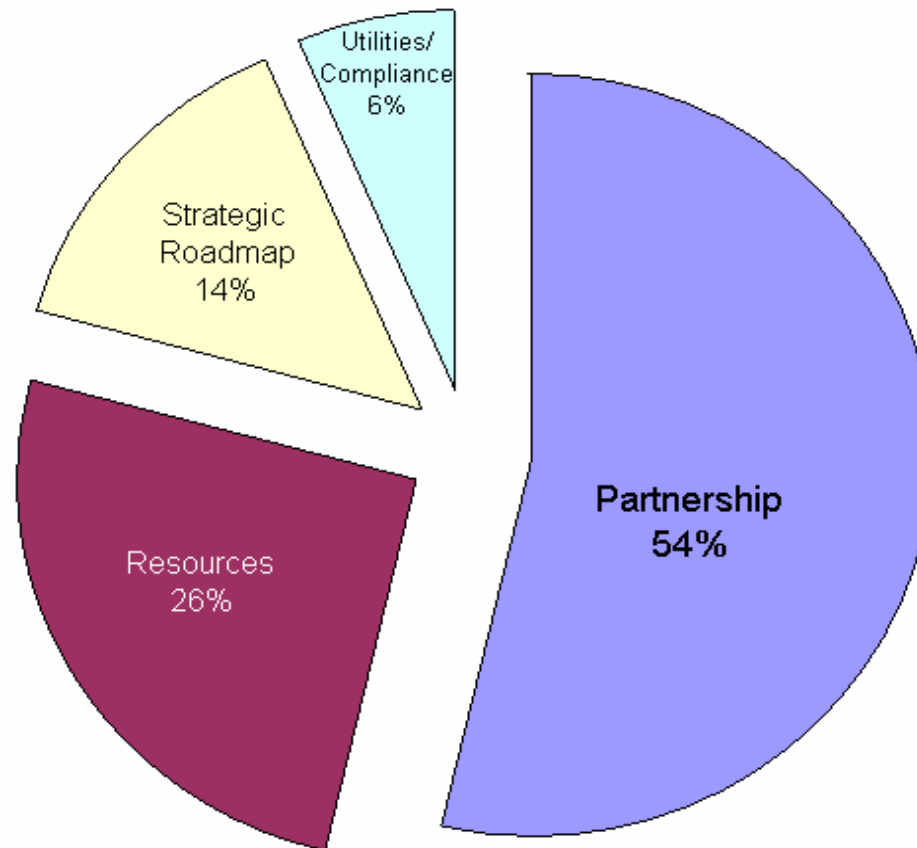
Discovery/Assessment Phase: Broad Themes Analysis

- Collected more than 550 comments from meetings with key stakeholders
- Categorized comments into four broad themes and sub-themes
- Analyzed how many comments fell into each category to get a sense of proportionality

Broad Themes

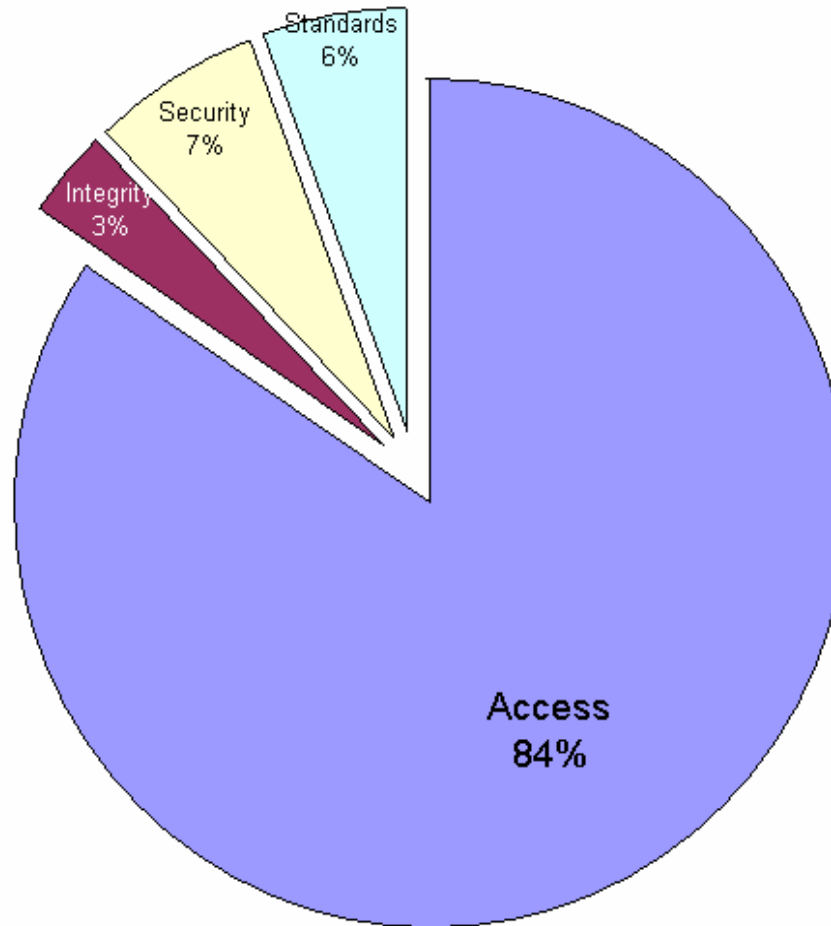


Strategy, Policy, and Partnership (23% of the Comments)



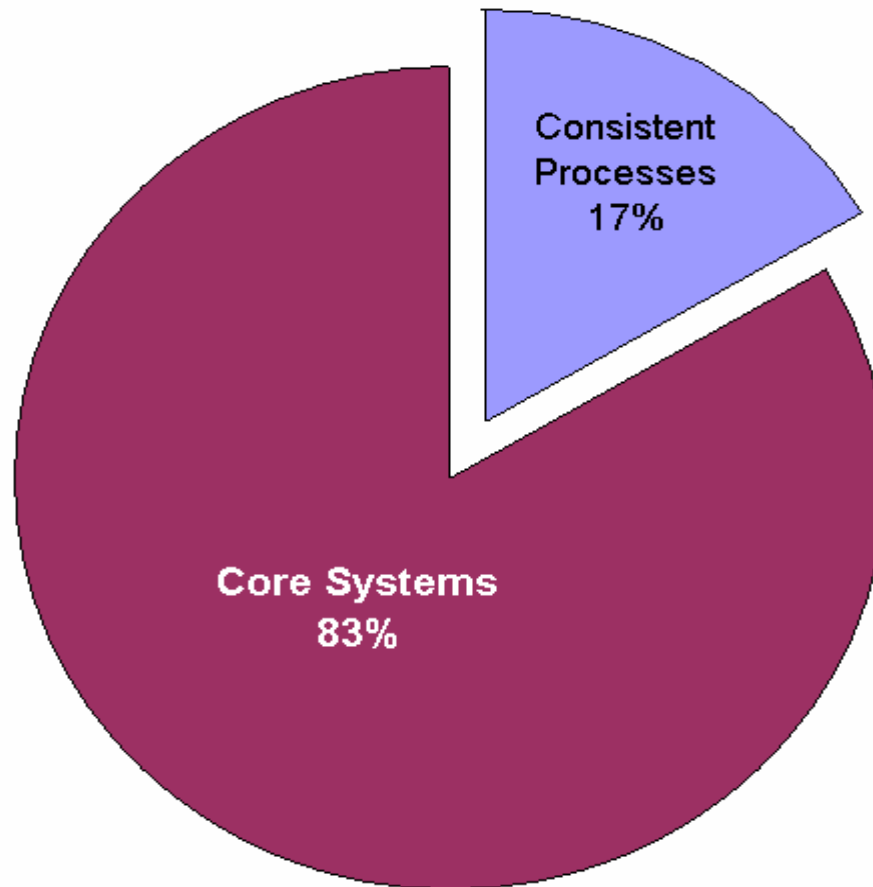
- Develop strategic roadmap
- Review governance structure
- Pursue strategic partnerships

Information Management (32% of the Comments)



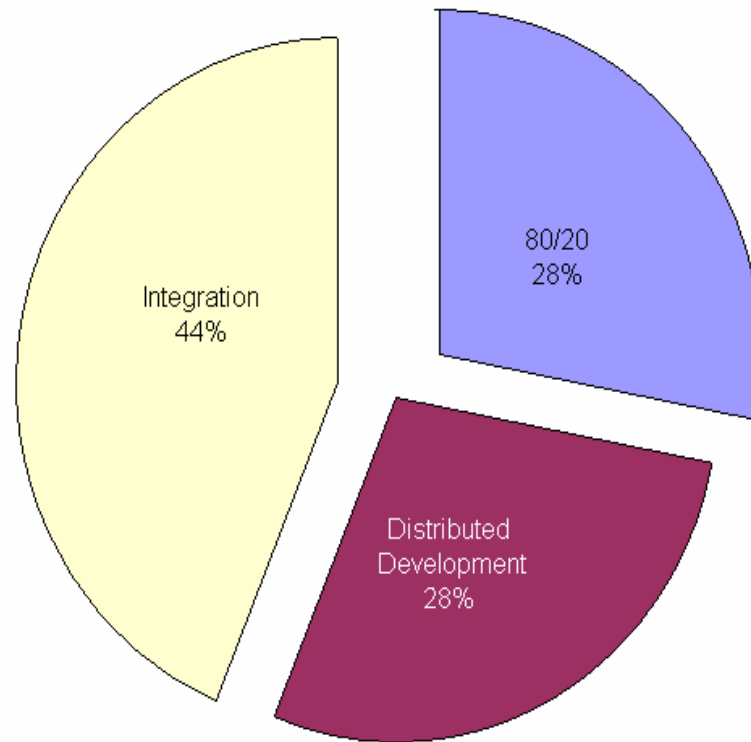
- Identify top five queries
- Develop consistent data definitions
- Address data access issues

Business Processes & Information Systems (25% of the Comments)



- I-MAC packages recommended for FY 07-08 funding
- Core system replacement

Information Architecture (20% of the Comments)



- Enable access to common central services
- Provide local development capabilities for specialized needs

Data Management Committee Progress

March 2007

- **Data and metadata definitions and related business processes**
 - Reviewing and approving data security recommendations
 - Reviewing past work to build on; identifying “low hanging fruit”
 - Determining baseline operating assumptions (*e.g., access levels/openness*)
- **Developing processes for data management**
 - Linking with Data Management User Group (DMUG)
 - Providing support and feedback to the Data Warehouse
 - Developing UW Data Management Policy Statement
 - Creating one-stop communications portal with many access points
 - Reporting to Office of Information Management
- **Top five questions for Data Warehouse and transaction systems**

What's Next?

- **Discovery/Assessment Phase:**
Stakeholder meetings complete. Input being analyzed to inform Strategic Roadmap.
- **Organizational Design and Transition Phase:**
Work is underway. Information about OIM's new structure and leadership team coming in July.
- **Strategic Roadmap Phase:**
Work has started on developing a vision for the future of information systems and information management and an action plan for how to move forward.



For more information visit OIM's Web Site

<http://www.washington.edu/provost/oim/>