



UW Wireless Initiative

January 25, 2007

Scott Mah
AVP Service Delivery & Support
Computing & Communications

What is wireless?

- Wireless is **pervasive** and part of everyday life now – from the family room, airport, coffee shop, classroom, to Suzzallo, or HUB lawn. Standard in most laptops.
- Becoming the way other devices **connect to the network**: gaming consoles, handhelds, medical equipment, smart phones, TVs.
- Evolving **standards** to maximize “connectedness” – **WiFi** is what we use for more defined communities such as UW or “Hotspots” in your neighborhood. Other wireless standards provide more metropolitan or international coverage – Clearwire and cellular data being examples.
- Different capacities and operating models depending on what you are trying to do – **not a one size fits all approach**.
- Wireless is inherently insecure, so it’s important to **use secure applications**.

The journey to UW wireless...

- University Technology Advisory Committee, Student Technology Fee Committee, Board of Deans, Provost, and President identified wireless as a **UW priority**.
- Comprehensive solution developed and funded to provide reliable, secure, and scalable **WiFi across Seattle campus +**
- **Sustainable** model provides ongoing operations and support beyond the three year deployment period.

UW details

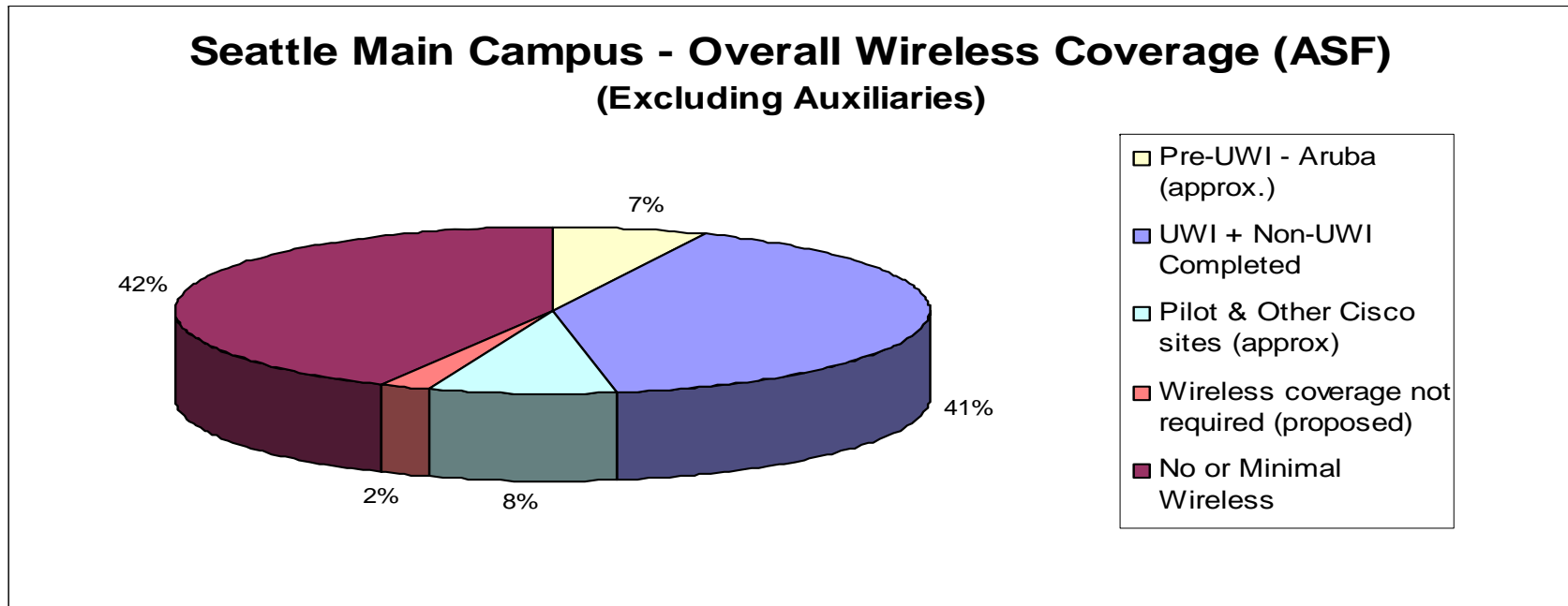
- UW WiFi supports the **current standards**.
- Technology doesn't know about classroom boundaries – common infrastructure in building is **always on**, monitored 7x24.
- Like a radio, WiFi has discrete channels that limit capacity – **not a replacement for wired**.
- Move from do-it-yourself to **campus-wide solution**.

Wireless Deployment

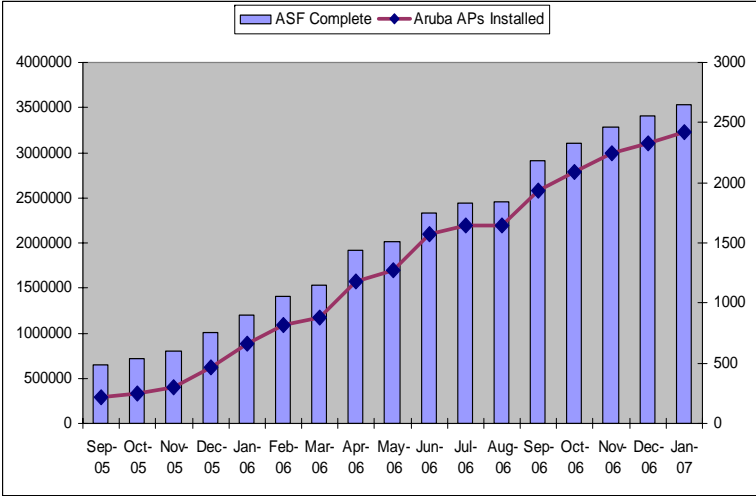
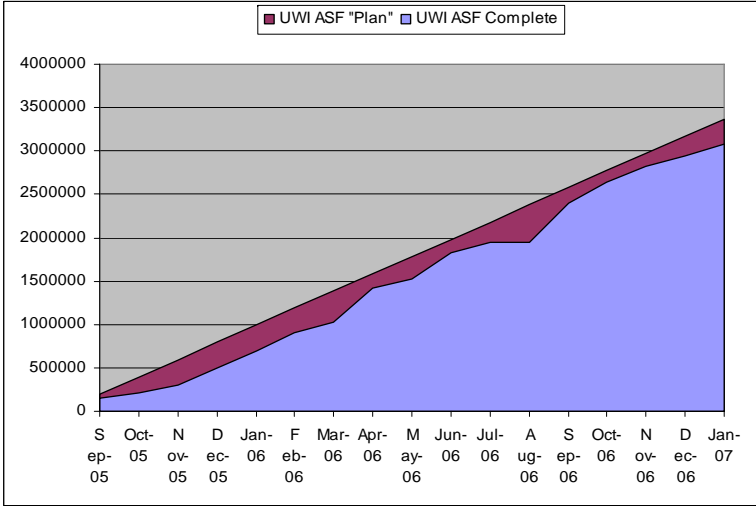
Seattle Main Campus only (excl. Auxiliaries)

Sept. 2005 – Present

- ~3.09m additional ASF covered (total ~4.2m ASF covered)
- 2325 Access Points installed (total ~2704)
- 11 Departmental/Branch Libraries
- 194 General Assignment Classrooms (8906 seats)
- ~189 Departmental Classrooms (~6386 seats)
- 2 Major Outdoor Areas (HUB Lawn, Quad)

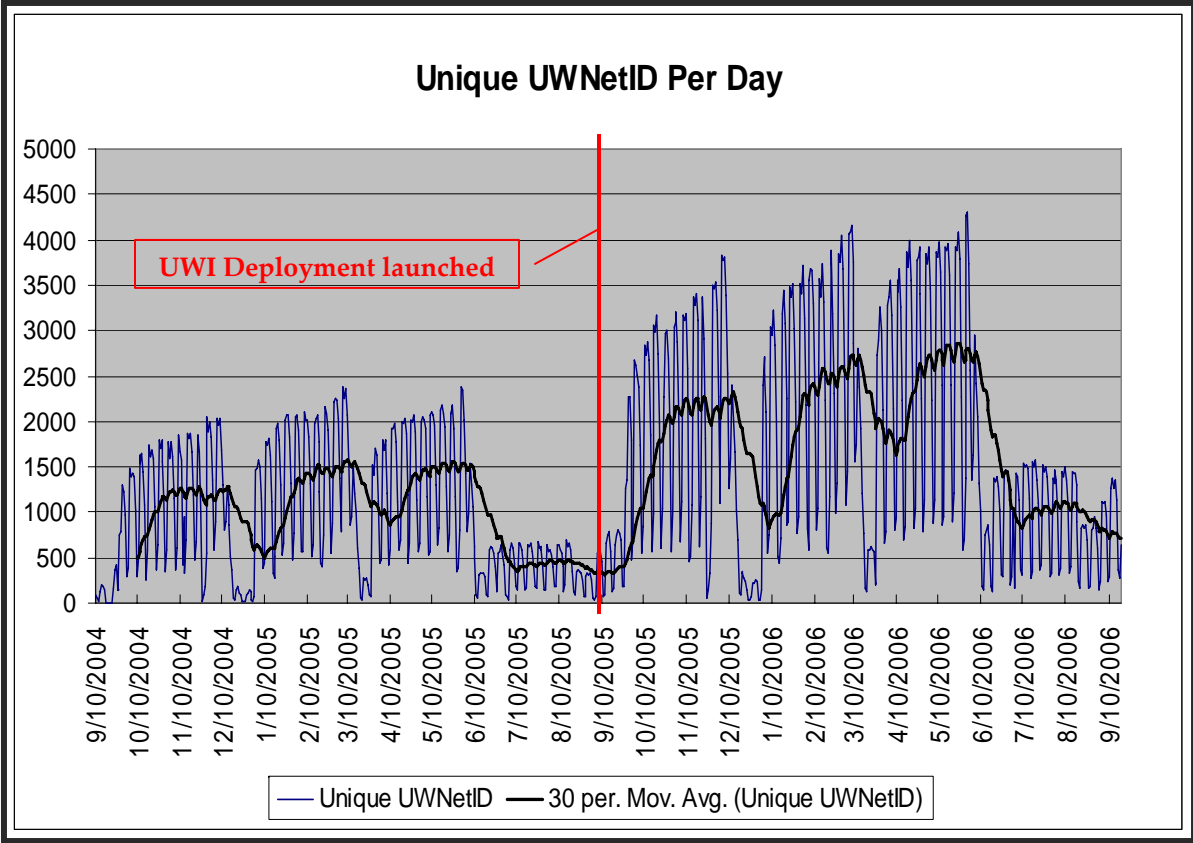


Wireless Deployment

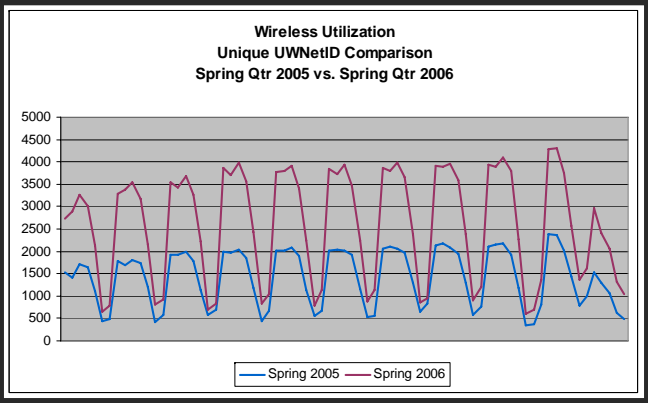


Wireless Utilization

“Build it and they will come”



Total Unique Users (Authenticated)	
Period	Users
8/04 - 7/05	20,243
8/05 - 9/06	37,278



Depicts wireless users authenticating via UWNetID to access off-campus resources.

UWI Deployment Update:

- Recently Completed:
(*Nov 15-Jan 15*)
 - CHDD Clinic
 - Chemistry Building
 - Henderson Hall
 - Ocean Sciences Building
 - Quarternary Research Center
 - Winkenwerder Forest Science Lab
- In Progress:
 - HSC BB-Wing Floor 10
 - HSC I-Wing Rotunda
 - Lewis Hall
- In Planning:
 - Aero. & Eng. Research Lab
 - Guthrie Hall
 - HSC E-Court Café & Classrooms
 - Husky Union Building
 - Instructional Center/Theater
 - Red Square
 - ATG - *on hold—hazmat*

Wireless coverage locations list can be found at:
www.washington.edu/computing/wireless/locations.html