

Basis of Design

This section applies to interior doors.

Design Criteria

- Interior wood doors shall comply with attached drawing Door Standards.
- Consider use FSC wood for interior doors where possible.
- Consider interior metal or aluminum doors from salvaged sources or with high recycled content where possible.
- Doors shall be certified asbestos free.

Design Evaluation

The following information is required to evaluate the design:

- Programming Phase: Provide a statement of intent to use Door Standards as a standard for solid core wood doors.
- Schematic Design Phase: Provide floor plans showing doors. Outline specification.
- Design Development Phase: Provide floor plans showing all doors with individual numbers for identification; provide a schedule of doors and frames, supplying a door-type schedule showing configuration of vision panels and face finish. Draft specification.
- Construction Document Phase: Completed design. Final specifications.

Construction Submittals

- Provide standard industry submittal requirements.
- Provide a certificate stating doors are asbestos free.

Related Sections

- Facilities Services Design Guide - Finished Hardware
- Facilities Services Design Guide - Access Control - CAAMS

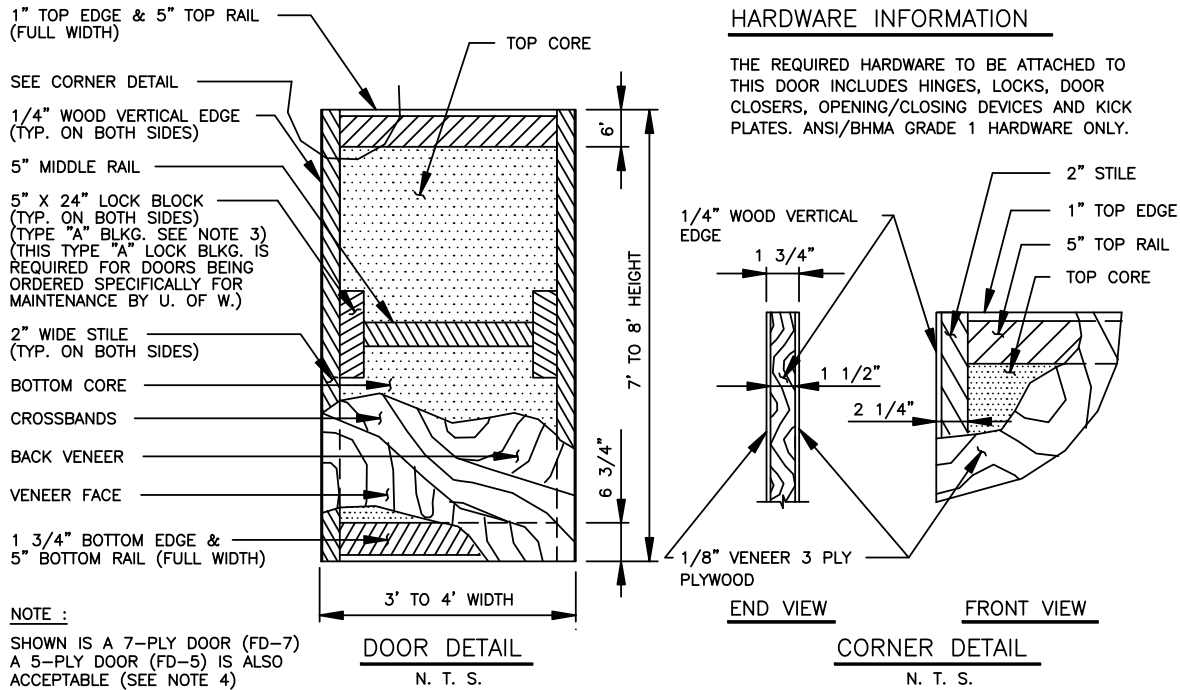
Products, Materials and Equipment

- The Door Standard was developed with three manufacturers and they are the only ones that manufacture this door. Provide doors from Alcoma Hardwoods Inc., Eggers Industries and Vancouver Door Co.; no exceptions.

Installation, Fabrication and Construction

- Install per manufacturer's recommendations and standard industry practices.

END OF DESIGN GUIDE SECTION



VENEER, MINERAL CORE FIRE DOOR, BONDED

(TIME RATINGS OF 45, 60 AND 90 MINUTES)

MATERIAL INFORMATION		
PART	QTY	MATERIAL
VERTICAL EDGE	2	1/4" HARDWOOD, SPECIFY SPECIES AND MATCH FACES
2" WIDE STILE	2	MINERAL COMPOSITION, NON COMBUSTIBLE, HIGH DENSITY (GREATER DENSITY THAN CORE WITH SAME RATING). (PER LABEL REQUIREMENTS) WITH SCREW HOLDING CAPABILITY FOR HARDWARE ATTACHMENT SAME AS FOR SOLID CORE WOOD DOOR. (NOT LESS THAN 1000 LBS WITH 1" PENETRATION AS TESTED TO ASTM D-1761) (A LABELLED FIRE DOOR COMPONENT) ALL COMPONENTS ARE BONDED AND SANDED PRIOR TO FACES.
5" TOP RAIL	1	
1" TOP EDGE	1	
5" X 24" LOCK BLOCK (SEE NOTE 3)	2	
5" MIDDLE RAIL	1	
5" BOTTOM RAIL	1	
1 3/4" BOTTOM EDGE	1	
CORE 2 SECTIONS (TOP AND BOTTOM)	2	MINERAL COMPOSITION NON COMBUSTIBLE (PER LABEL REQUIREMENTS) (A LABELLED FIRE DOOR COMPONENT)
VENEER FACE 2 FACES (1 EACH SIDE)	2	1/8" PLYWOOD VENEER (1/50" MIN.) SPECIES TO BE SPECIFIED 3 PLY ON EACH SIDE OF DOOR OR 2 PLY ON EACH SIDE OF DOOR

NOTES :

1. THE FIRE DOOR DETAILS AND INFORMATION, AS SHOWN, ARE THE MINIMUM STANDARDS FOR THE UNIVERSITY OF WASHINGTON. ALL MINERAL CORE COMPOSITION FIRE DOORS MUST COMPLY TO THIS STANDARD.
2. THIS DOOR, ASSEMBLED/FABRICATED AND BONDED TOGETHER, AS SHOWN, CAN BE OBTAINED FROM ALGOMA HARDWOODS, INC., VT INDUSTRIES AND VANCOUVER DOOR CO.
3. LOCK BLOCKING (TYPE TO BE SPECIFIED)
 TYPE "A" SIZE 5" X 24" BOTH SIDES (AS SHOWN)
 TYPE "B" SIZE 5" X 18" ONE SIDE (TO BE SPECIFIED)
 TYPE "C" SIZE 5" X 12" ONE SIDE (TO BE SPECIFIED)
4. REFER TO WINDOW AND DOOR MANUFACTURERS ASSOCIATION (W.D.M.A.) INDUSTRY STANDARD I.S.1A-97, SEE STANDARD S-13 (FD-5 OR FD-7), CUSTOM GRADE, FOR ADDITIONAL INFORMATION.
5. REFER TO NATIONAL FIRE PROTECTION ASSOCIATION (N.F.P.A.) MANUAL 80 FOR HARDWARE AND TOTAL INSTALLATION INSTRUCTIONS.
6. THESE DOORS TO BE SPECIFIED BY SIZE AND TIME RATED DESIGNATION LABEL REQUIREMENTS IN EITHER SINGLES OR PAIRS.
7. REFER TO SECTION 06400 OF FACILITIES DESIGN INFORMATION (F.D.I.) MANUAL FOR ADDITIONAL INFORMATION.
8. THIS DOORS MUST HAVE A FULL UNLIMITED LIFETIME WARRANTY (INTERIOR DOORS) IN ACCORDANCE WITH INDUSTRY STANDARD.

LITE NOTE : MAXIMUM OF 100 SQ. IN. AT 60 AND 90 MINUTE DOORS AND 1296 SQ. IN. AT 45 MINUTE DOOR.

SD- A-38

Door Standards—45, 60 and 90 Minute Rated