

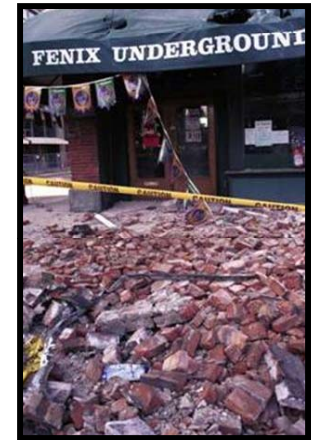
Campus Engineering Post-Earthquake Evaluation of Buildings (ATC-20)

Purpose

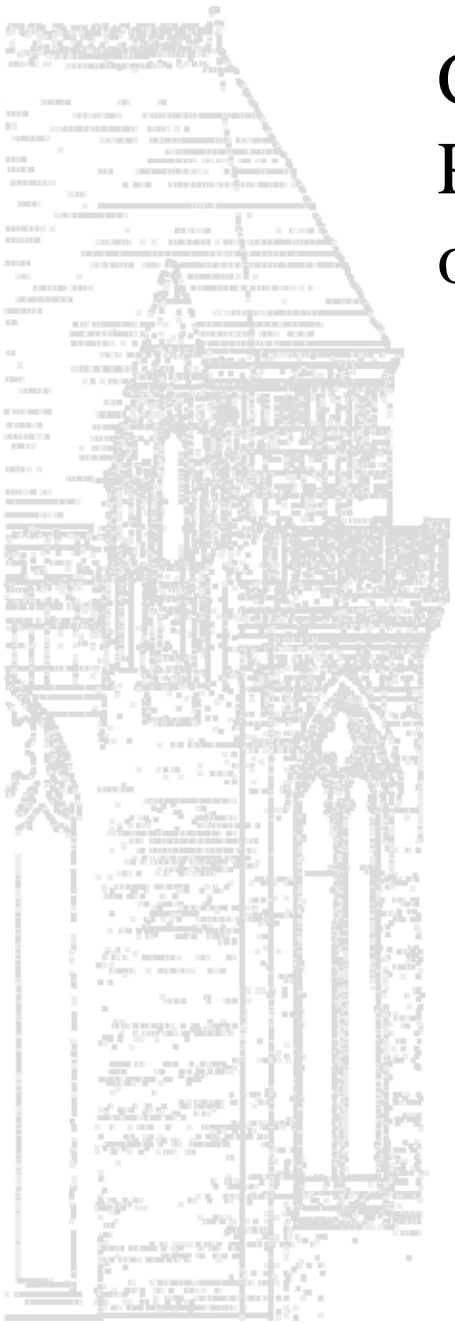
- Identify unsafe buildings; preventing students, faculty and staff from entering
- Identify unsafe and partially damaged buildings that require further analysis and repair for long term safety
- Identify safe buildings in order to allow re-occupancy for continued campus operation

Procedure

- Campus Engineering utilizes the FEMA ATC-20 document and methodology for post-earthquake safety evaluation of buildings
- Evaluation teams are led by Campus Engineering licensed structural engineers and architects
- Buildings are evaluated and posted green, yellow or red depending on the damage observed



Campus Engineering Post-Earthquake Evaluation of Buildings (ATC-20)



Postings

- Green: Building has been inspected and occupancy is permitted
- Yellow: Occupancy is restricted as indicated on the yellow placard posted
- Red: Building is Unsafe, do not enter or occupy



Practice

- Campus Engineering conducts yearly hands-on drills or training
- Architects from the Capital Projects Office also participate in training to assist in leading ATC-20 teams
- New Campus Engineering employees are given ATC-20 training

