

Husky Football 2003 Season Solid Waste/Recycle Report



Prepared for Property & Transport Services by
Pat Kaufman, Program Operations Manager-Recycling
Eric Johnson, Program Operations Manager-Transportation
December, 2003

SUMMARY

The overall evaluation of the Husky Football Solid Waste and Recycle operations was positive. All containers were placed on time, serviced and removed as scheduled. Oversight of operations was accomplished by ongoing communication with Parking Services, Grounds, Waste Management, and ICA operations staff. Minor changes were made throughout the season to adjust service levels.

Total amount of *solid waste* generated by Husky Football was 122.7 tons which was 87% of all waste volume. Total amount of *recyclables* diverted was 15.98 tons which was 13% of all waste generated.

The new Husky Toter was introduced to collect plastic, aluminum, and glass beverage containers in the tailgating areas. Husky toters replaced the corrugated recycling box used in '01 and '02 football seasons. The users liked the visual appeal of the containers as well as their functionality. Husky Toters were also placed at entry gates and inside the stadium in each concourse area. Husky Toters decreased the frequency of overflowing solid waste and recycling receptacles. The new toters provide greater durability for all weather conditions. With the new Husky Toters, cans and bottles recycling increased from 6.01 tons in 2002 to 9.19 tons in 2003, which is an increase of 3.18 tons or 35%.

A new solid waste service "motto" was adopted for 2003 season. The phrase "like we were never there," was used to describe the effort made to decrease the impact on aesthetics and parking spaces following each game. All temporary dumpsters were placed late Friday afternoon, serviced on Sunday, and removed prior to 6:00 am on the Monday after each game.

Waste Management provided two roll-off dumpsters at the Climbing Rock and at Dempsey that were custom painted Husky purple and gold prior to the home game opener. Newly painted 4 yard dumpsters were placed in the E-1 parking lot. A 30 cubic yard roll-off dumpster was delivered each Sunday morning to facilitate parking area clean up by UW Grounds crew. The corp yard container was moved from E 1 to the corp yard to facilitate garbage removal. This change decreased the distance needed to be traveled to dump garbage during clean up, thereby increasing efficiencies in time and labor.

RECOMMENDATIONS

Aesthetic

- Replace existing galvanized litter cans in parking areas with rolling trash toters.
- Provide newly painted dumpsters at all locations in public view.

Operation

- Develop protocol for servicing of trash toters addressing the operational efficiency and ergonomic benefits.
- Provide a staff member during games to maintain recycle and garbage toters and address any overflow problems.
- Increase the number of recyclables diverted by having a consistent protocol for picking the bowl.
- Ensure that all containers have current signs and decals.
- Add cardboard collection containers at the stadium SILO and Waterfront Activity Center.
- Increase the number of Husky Toters placed in the stadium concourse areas.
- Implement TAG (Tin, aluminum, glass, and plastic beverage container) recycling at the Don James Center and Dempsey Indoor Facility.

Outreach

- Increase the awareness of recycling opportunities through public education during ICA events in various venues.
- Develop an ongoing relationship with the ICA operations staff to capture recycling at special events and activities throughout the calendar year.

SITE SPECIFICATIONS AND SERVICE REQUIREMENTS

NORTH STANDS

Service Requirements				
Material	Location	Quantity	Container	Service
Garbage	North stands	1 - permanent	4 cubic yard	M/Th/ F 6am
Garbage	North stands	1 - temporary	4 cubic yard	M/Th/ F 6am
Cardboard	North stands	2 - temporary	4 cubic yard	M/Th/ F 6am

- Placement: Under east end of stands between Tunnels 29 and 31.
- Place to right of existing solid waste dumpster with back against green tarped area.
- All dumpsters at North Stands need to be emptied prior to 6am on Monday.
- Remove all temporary dumpsters following the last home game.



NOTES

- Ensure that Trash Dumpsters are clearly marked for Trash Only.
- Ensure that Cardboard Dumpsters are clearly marked for Cardboard Only.
- Weight totals for North Stands 4 yard containers are not available.

2003 Tonnage for each Game									
Location	Type	9/7	9/21	9/28	10/12	10/26	11/2	11/23	Total
North Stands	4 cubic yard	n/a	n/a	n/a	n/a	n/a	n/a	n/a	n/a

TRASH TOTERS

Service Requirements				
Material	Location	Quantity	Container	Service
Garbage	East stands	172	Toter -112 gal.	Sun. 7am

- Placement: Under the scoreboard in the stadium.
- Deliver toters to area in front of storage containers below scoreboard.
- All toters need to be serviced beginning on Sunday morning, as needed per stadium staff.



NOTES

- Ensure that 160 toters delivered are Maroon and posted for trash only.
- Ensure that 12 toters delivered are Green (contraband) and also posted for trash only.

2003 Tonnage for each Game									
Location	Type	9/7	9/21	9/28	10/12	10/26	11/2	11/23	Total
Trash Toters	172 toters	9.43	9.61	11.25	10.86	12.1	12.84	12.62	78.71

E - 10 (SILO BOX)

Service Requirement				
Material	Location	Quantity	Container	Service
Garbage	E 10 (SILO)	1	20 cubic yard	Sun. 7am

- Placement: At the “silo,” under south stands as in photo below.
- This is the roll-off that goes in the BBQ pit after 4pm and before 9pm Friday - prior to game.
- Placement: In the center of the “BBQ pit.” Use key #3087 to access BBQ area.
- Ensure that the SILO box is relocated before 6am Monday - after game.



NOTES

- Husky Stadium will be in security ‘lock down’ after 5pm Fridays prior to home games.
- Stadium access will be provided to Waste Management drivers listed on the master driver list provided to UW prior to season.

2003 Tonnage for each Game									
Location	Type	9/7	9/21	9/28	10/12	10/26	11/2	11/23	Total
SILO box (E-10)	20 yard	.97	.81	.75	1.05	.73	.87	.65	5.83

CLIMBING ROCK

Service Requirement				
Material	Location	Quantity	Container	Service
Garbage	Grass area by climbing rock	2	30 cubic yard	Mon. 6am

- Place roll-offs as shown in photos.
- Lids should open towards the climbing rock.
- Placement: Use driveway off E-12 parking lot to place containers on lawn. Woodchip driveway is at far southeast end of lot.



NOTES

- Please be careful not to damage trees and/or tree limbs.
- Please do not block lawn driveway with roll-offs – must maintain 2 lanes for traffic.
- UW Parking Services to place barricades Thursday prior to each game at approach to climbing rock lawn (SE corner of E-12 parking lot).

2003 Tonnage for each Game									
Location	Type	9/7	9/21	9/28	10/12	10/26	11/2	11/23	Total
Climbing Rock	2 x 30 cu yard box	1.94	1.62	2.74	1.33	1.83	1.53	2.06	13.05

WATERFRONT ACTIVITIES CENTER

Service Requirements				
Material	Location	Quantity	Container	Service
Recycle	WAC	2 permanent	Toter	Weekly
Garbage		1 permanent	2 cubic yard	Daily (UW)
Garbage	Canoe House	1 permanent	2 cubic yard	Daily (UW)
Garbage		1 temporary	4 cubic yard	M & F (WM)

Permanent Placement:

- 2 cubic yard dumpster just to the right of Waterfront Activities Center building in recessed area.
- 2 cubic yard dumpster at the corner of the asphalt near the Canoe House.
- Two cans and bottles recycling toters placed along side existing litter receptacles.

Temporary Placement:

- 4 cubic yard dumpster at the corner of the asphalt near the Canoe House – along side permanent dumpster.



NOTES

- Permanent dumpsters will be serviced by UW garbage collection staff.
- Temporary dumpster will be serviced by WM.

2003 Tonnage for each Game									
Location	Type	9/7	9/21	9/28	10/12	10/26	11/2	11/23	Total
WAC	dumpsters	n/a	n/a	n/a	n/a	n/a	n/a	n/a	n/a

DEMPSEY

Service Requirements				
Material	Location	Quantity	Container	Service
Garbage	Dempsey loading dock	1 permanent	2 cubic yard	F 4pm-M 6am
Cardboard		1 temporary	4 cubic yard	F 4pm-M 6am
Garbage	Tennis facility back door	1 temporary	30 cubic yard	F 4pm-M 6am
Cans & Bottles		1 temporary	2 cubic yard	F 4pm-M 6am

Permanent container:

- Trash 2 cubic yard dumpster: located at or near Dempsey loading dock.

Temporary container placement:

- Trash 30 cubic yard drop box: Place near back door of tennis facility, on left side of walkway.
- Recycle 4 cubic yard dumpster for cardboard: Place at the Dempsey loading dock near the permanent 2 yard trash dumpster.
- Recycle 2 cubic yard dumpster for Cans & Bottles: Place near the 30 cubic yard drop box along walkway to Dempsey Indoor Facility.



NOTES

- Ensure that all containers have ample decals.

2003 Tonnage for each Game									
Location	Type	9/7	9/21	9/28	10/12	10/26	11/2	11/23	Total
Dempsey	30 yard	1.6	.6	.9	.63	.85	1.26	.71	6.55
Dempsey	dumpsters	n/a	n/a	n/a	n/a	n/a	n/a	n/a	n/a

CORP YARD

Service Requirements				
Material	Location	Quantity	Container	Service
Garbage	Corp Yard	1	30 cubic yard	6am Mon.

- Placement: To the right of the yard waste dumpsters (white roll-offs in picture below) in front of Corp Yard 2. Use key #159 to open yellow gate to access area.
- Please keep roll-off on asphalt. Place so that lid opens to allow service vehicles to also access container from asphalt.
- Place roll-offs as shown in photos



NOTES

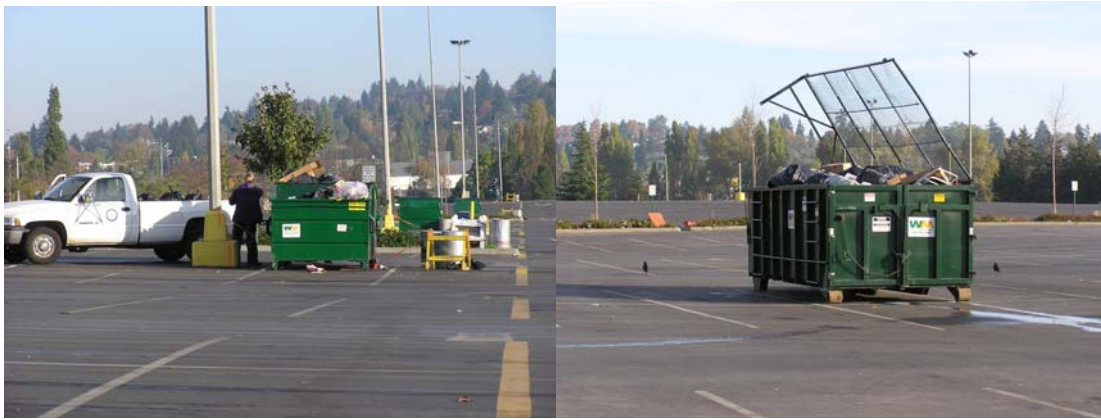
- Lids should open towards the street.
- Relocate corp yard 30 yard box to E-1 parking lot for clean up.

2003 Tonnage for each Game									
Location	Type	9/7	9/21	9/28	10/12	10/26	11/2	11/23	Total
Corp Yard	30 yard	.22	0	.52	.08	0	0	.93	1.75

E-1 PARKING LOT

Service Requirements				
Material	Location	Quantity	Container	Service
Garbage	E 1 parking lot	1	30 cubic yard	By 6am Mon.
Garbage	E 1 parking lot	6	4 cubic yard	By 6am Mon.

- Dumpster placement: West of main center aisle – next to light poles.
- At the Southernmost light pole (aisles 4 & 5) place two 4 cubic yard dumpsters – back to back with the lids opened.
- All four cubic yard dumpsters need to be placed after 4pm Friday and pulled from E-1 before 6am on Monday.



NOTES

- For normal games only five 4 cubic yard dumpsters are placed; two at the first light pole and one at each of the 3 light poles to the North.
- For night games and high activity games (i.e. Apple Cup) a sixth 4 cubic yard dumpster is placed at the 'next' light pole to the north.

2003 Tonnage for each Game									
Location	Type	9/7	9/21	9/28	10/12	10/26	11/2	11/23	Total
E-1 parking lot	30 yard	1.47	1.26	1.65	1.21	1.71	2.88	2.21	12.39
E-1 parking lot	4 yard	0.74	0.6	0.62	0.45	0.67	0.58	0.76	4.42

WEST PLAZA

Service Requirements				
Material	Location	Quantity	Container	Service
Cans & Bottles	West Plaza	1	20 cubic yard	By 6am Mon.
Cardboard	West Plaza	1	30 cubic yard	By 6am Mon.

- Placement: Place end-to-end with hinges on the west side (toward Montlake Blvd) so that lid opening is on stadium side.



NOTES

- Cans and bottles 20 yard box is dedicated to recycling of stadium seating area cans and bottles collected. Tonnages recorded below reflect sporadic collection.

2003 Tonnage for each Game									
Location	Type	9/7	9/21	9/28	10/12	10/26	11/2	11/23	Total
West Plaza	20 yard - Cans & Bottles	0.24	0.33	0.13	0.1	0	0	0	0.8
West Plaza	30 yard - Cardboard	0.76	0.75	0.64	0.74	1.16	1.06	0.88	5.99

HUSKY TOTERS (Cans & Bottles Recycling)

Service Requirements				
Material	Location	Quantity	Container	Service
Cans & Bottles	E - 1	30	Husky Toter	Sunday
Cans & Bottles	Padelford	10	Husky Toter	Sunday
Cans & Bottles	Stadium Gates	24	Husky Toter	Sunday
Cans & Bottles	In Stadium	20	Husky Toter	Sunday
Cans & Bottles	E - 12	60	Husky Toter	Sunday
Cans & Bottles	WAC	6	Husky Toter	Sunday

- Quantities shown in table above reflect service levels for final game of 2003 season.
- UW Grounds staff will place Husky Toters next to litter cans on Friday and consolidate for Waste Management to service on Sunday.
- At each stadium entry gate Husky Toters were placed at the search lines next to litter cans.



NOTES

- Each Husky Toter is posted with special UW Husky decals.
- Each Husky Toter is placed next to a litter can in the parking lots, at the stadium entry gates and inside the stadium.

2003 Tonnage for each Game									
Location	Type	9/7	9/21	9/28	10/12	10/26	11/2	11/23	Total
Husky Toters	Husky Toters	0.87	0.8	1.41	0.98	1.85	1.27	2.01	9.19

BIOMEDICAL WASTE

Service Requirements				
Material	Location	Quantity	Container	Service
Biomedical Waste	First Aid room	2	30 gallon tub	Friday

- Placement: Just inside double door, in the hallway to the right.
- Red plastic tubs are delivered on Friday prior to each game.



NOTES

- Stericycle, the Biomedical Waste vendor collects full tubs and delivers empty collection tubs on Friday morning prior to each game.

2003 Tonnage for each Game									
Location	Type	9/7	9/21	9/28	10/12	10/26	11/2	11/23	Total
Tunnel 17	30 gal.	n/a	n/a	n/a	n/a	n/a	n/a	n/a	n/a

Husky Football 2003 Season Solid Waste/Recycle Report HIGHLIGHTS



Game 1 Indiana: Waste Management delivers boxes with Husky Purple paint job. The temperature was about 61° Fahrenheit, with no precipitation. 71,125 people attended the game.



Game 2 Idaho: Performance of new Husky Toters continues to be excellent! The temperature was about 54° Fahrenheit, with no precipitation. 71,178 people attended the game.



Game 3 Stanford: Husky Toters are added to all stadium entry gates. The temperature was about 60° Fahrenheit, with no precipitation. 71,875 people attended the game.



Game 4 Nevada: More Husky Toters and trash cans are added to climbing rock area. The temperature was about 51° Fahrenheit, with no precipitation. 70,149 people attended the game.



Game 5 USC: UW Grounds crew continues to place Husky Toters for service. The temperature was about 47° Fahrenheit, with no precipitation. 72,015 people attended the game.



Game 6 Oregon: 20 Husky Toters are placed in the stadium to collect cans & bottles. The temperature was about 37° Fahrenheit, with no precipitation. 72,450 people attended the game.



Game 7 Washington State: While efforts were made through the season to collect cans and bottles from the parking lots, at the gates and along the stadium concourse, the challenge of recycling bottles and cans from inside the bowl during clean up continues to exist. The temperature was about 34° Fahrenheit, with no precipitation. 74,549 people attended the game.

Husky Football 2003 Tonnage Report

At all seven Husky Football home games the garbage and recycling was collected by Waste Management of Seattle. A combination of small cart sized toters, two to four cubic yard dumpsters, and several 30 cubic yard roll off boxes were used. The chart below illustrates different collection container sizes and their respective tonnage totals.

Solid Waste

Location	Type	9/7	9/21	9/28	10/12	10/26	11/2	11/23	Totals
E-10 Parking Lot	30yd	0.97	0.81	0.75	1.05	0.73	0.87	0.65	5.83
Climbing Rock - Trash	2-30yd	1.94	1.62	2.74	1.33	1.83	1.53	2.06	13.05
Dempsey Indoor Facility	20yd	1.6	0.6	0.9	0.63	0.85	1.26	0.71	6.55
Corp Yard	20yd	0.22	0	0.52	0.08	0	0	0.93	1.75
E-1 Parking Lot-4yds	5-4yds	0.74	0.6	0.62	0.45	0.67	0.58	0.76	4.42
E-1 Parking Lot-far side	30yd	1.47	1.26	1.65	1.21	1.71	2.88	2.21	12.39
Trash Toters	172 toters	9.43	9.61	11.25	10.86	12.1	12.84	12.62	78.71
	Totals	16.37	14.5	18.43	15.61	17.89	19.96	19.94	122.7

Recycle

Location	Type	9/7	9/21	9/28	10/12	10/26	11/2	11/23	Totals
West Plaza- OCC	30yd	0.76	0.75	0.64	0.74	1.16	1.06	0.88	5.99
West Plaza- TAG	20yd	0.24	0.33	0.13	0.1	0	0	0	0.8
Husky Toters- TAG	150 toters	0.87	0.8	1.41	0.98	1.85	1.27	2.01	9.19
	Totals	1.87	1.88	2.18	1.82	3.01	2.33	2.89	15.98

Total Tonnage

Solid Waste	122.7 tons	87%
Recycle	15.98 tons	13%