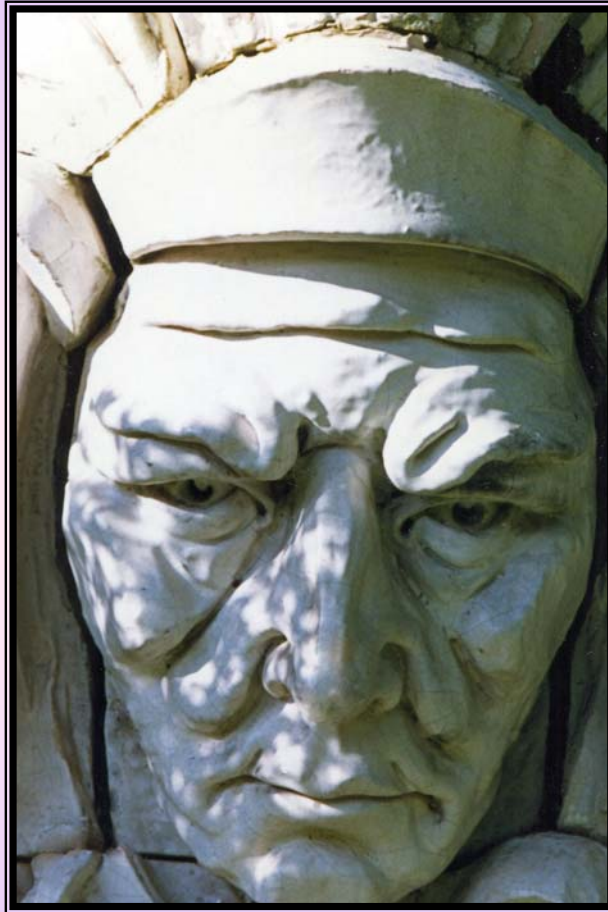


State of Native Americans at the University of Washington - Seattle



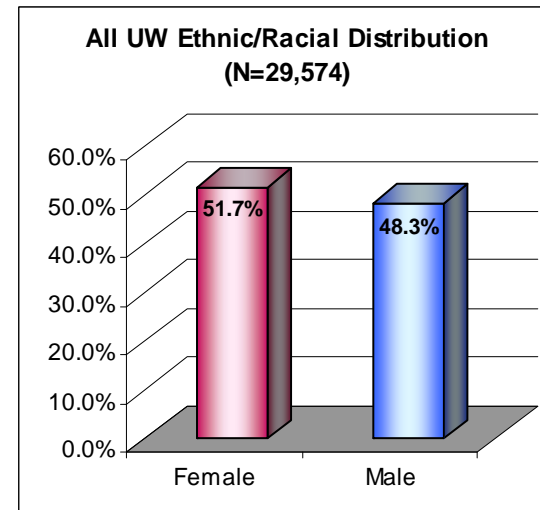
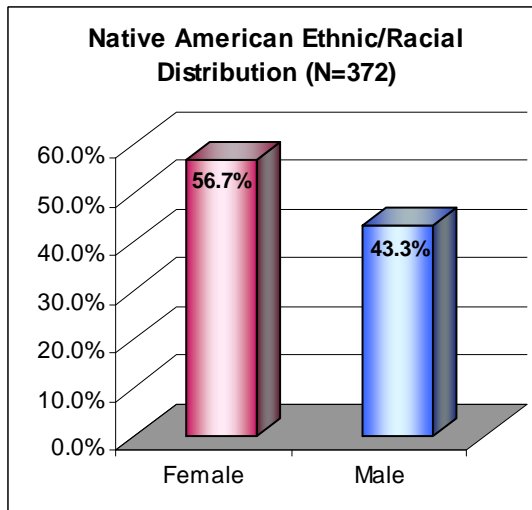
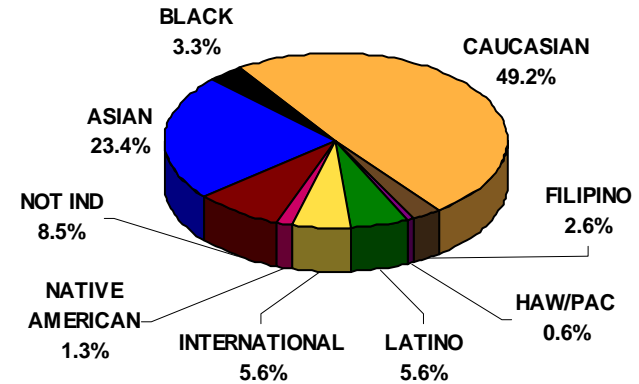
Prepared by:
Assessment Unit Staff
Office of Minority Affairs & Diversity
April 16, 2010

Source of image: OMAD Staff

UNDERGRADUATE ENROLLMENT DATA AS OF THE 10TH DAY OF AUTUMN 2009

UNDERGRADUATES	2009		
	FEMALE	MALE	TOTAL
ASIAN	3,637	3,286	6,923
BLACK	528	438	966
CAUCASIAN	7,370	7,172	14,542
FILIPINO	443	334	777
HAW/PAC	105	83	188
LATINO	915	744	1,659
INTERNATIONAL	877	766	1,643
NATIVE AMERICAN	211	161	372
NOT IND	1,192	1,312	2,504
TOTAL	15,278	14,296	29,574
ALL URM *	1,759	1,426	3,185
STUDENTS OF COLOR	5,839	5,046	10,885

ETHNIC/RACIAL DISTRIBUTION (N = 29,574)



* URM = Underrepresented Minorities (i.e., Black, Haw/Pac, Latino & Native American)

AUTUMN 2009 UNDERGRAD ENROLLMENT BY FINANCIAL AID STATUS

PELL RECIPIENTS

ETHNICITY	ALL UW	PELL RECIPIENTS			% of the Total
		Female	Male	Total	
ASIAN	6,766	1,241	977	2,218	32.8%
BLACK	929	296	220	516	55.5%
CAUCASIAN	13,827	1,262	1,179	2,441	17.7%
FILIPINO	746	93	70	163	21.8%
HAW/PAC	185	34	29	63	34.1%
LATINO	1,604	344	260	604	37.7%
INTERNATIONAL	1,610			0	0.0%
NATIVE AMERICAN	369	74	58	132	35.8%
NOT IND	1,396	137	168	305	21.8%
TOTAL	27,432	3,481	2,961	6,442	23.5%
ALL URM*	3,087	748	567	1,315	42.6%

HUSKY PROMISE

ETHNICITY	ALL UW	HUSKY PROMISE			% of the Total
		Female	Male	Total	
ASIAN	6,766	1,078	818	1,896	28.0%
BLACK	929	252	169	421	45.3%
CAUCASIAN	13,827	1,069	948	2,017	14.6%
FILIPINO	746	82	59	141	18.9%
HAW/PAC	185	28	15	43	23.2%
LATINO	1,604	273	235	508	31.7%
INTERNATIONAL	1,610			0	0.0%
NATIVE AMERICAN	369	61	36	97	26.3%
NOT IND	1,396	101	132	233	16.7%
TOTAL	27,432	2,944	2,412	5,356	19.5%
ALL URM*	3,087	614	455	1,069	34.6%

FIRST GENERATION

ETHNICITY	ALL UW	FIRST GENERATION			% of the Total
		Female	Male	Total	
ASIAN	6,766	935	699	1,634	24.2%
BLACK	929	220	165	385	41.4%
CAUCASIAN	13,827	965	810	1,775	12.8%
FILIPINO	746	70	53	123	16.5%
HAW/PAC	185	33	22	55	29.7%
LATINO	1,604	324	239	563	35.1%
INTERNATIONAL	1,610			0	0.0%
NATIVE AMERICAN	369	63	41	104	28.2%
NOT IND	1,396	86	103	189	13.5%
TOTAL	27,432	2,696	2,132	4,828	17.6%
ALL URM*	3,087	640	467	1,107	35.9%

Notes: Students who were non-matriculantes were omitted in the above tables

URM* = Underrepresented Minorities (i.e., Black, Hawaiian/Pacific Islanders, Latino & Native American)

Undergrad Native American Enrollees as of the 10th Day of Autumn 2009 by Tribal Affiliation

TRIBAL AFFILIATION	FEMALE	MALE	TOTAL
TRIBAL AFFILIATION	F	M	TOTAL
ABENAKI	1		1
ALASKA INDIAN	4	2	6
ALASKA NATIVE	9	6	15
ALEUT	2	4	6
AM IND - NO DOC	114	76	190
AMERICAN INDIAN	2	1	3
AMERIND WHITE		1	1
ASSINIBOINE		1	1
BLACKFEET	1		1
BLACKFOOT SIOUX	1		1
CANADIAN INDIAN	1	1	2
CHEROKEE	4	5	9
CHEYENNE RIVER SIOUX		1	1
CHICKASAW	2	2	4
CHIPPEWA	1	1	2
CHOCTAW	3	1	4
COAST MIWOK	1	1	2
COLVILLE	4	3	7
COMANCHE	2	1	3
COOS		1	1
COWLITZ	2	2	4
CREEK	1	3	4
ESKIMO	2	1	3
FORT PECK	1		1
KALISPEL	1		1
KAROK	1		1
KLAMATH		1	1
LAC COURTE OREILLES	1		1
LITTLE SHELL CHIPPEW	1		1
LUMBEE		1	1
LUMMI		1	1
MAIDU	1		1
MAKAH	2	3	5
MASHPEE	1		1
MINNESOTA CHIPPEWA	1	2	3
MUCKLESHOOT	1	1	2
NAVAJO	4	1	5
NEZ PERCE	1	1	2

TRIBAL AFFILIATION	FEMALE	MALE	TOTAL
NOOKSACK	2	1	3
NORTHERN ARAPAHO		1	1
NORTHERN CHEYENNE	1		1
OGLALA SIOUX	1	2	3
PAIUTE	1		1
PIT RIVER		1	1
PONCA	1		1
PORT GAMBLE CLALLAM		1	1
POTAWATOMIE		1	1
PUEBLO	1		1
PUYALLUP	1	2	3
QUILEUTE		1	1
QUINAULT	3	2	5
ROSEBUD SIOUX	2		2
SALISH AND KOOTENAI		1	1
SAMISH	1	3	4
SEALASKA		1	1
SHOALWATER	2		2
SILETZ	1		1
SIOUX		2	2
SNOHOMISH	1	1	2
SNOQUALMIE	1	1	2
SQUAXIN ISLAND	2		2
TLINGIT	4	2	6
TULALIP	4	1	5
TUNICA-BILOXI		1	1
TURTLE MOUNTAIN	1	2	3
UTE		1	1
WAMPANOAG	1		1
WASHAKIE	1		1
WASHO	1		1
WESTERN CHEROKEE		1	1
WHITE AMERIND-1 TRB	1	1	2
WHITE ESKIMO		1	1
WINNEBAGO	1		1
WINTU		1	1
YAKIMA	2	4	6
YUROK	1		1
TOTAL	211	161	372

NOTE: Of the 7 Native American students who enrolled after the 10th Day of Autumn 2009, 5 had no documentation, 1 each was Colville and Potawatomie

Graduate Native American Enrollees as of the 10th Day of Autumn 2009 by Tribal Affiliation

TRIBAL AFFILIATION	FEMALE	MALE	TOTAL
ABENAKI	1		1
ALASKA NATIVE	3		3
ALEUT	2	1	3
AM IND - NO DOC	1		1
AMERICAN INDIAN	7	3	10
BAY MILLS CHIPPEWA	1		1
BLACKFEET	1		1
CANADIAN INDIAN	1		1
CHEROKEE	4	1	5
CHEROKEE SHAWNEE	1		1
CHIPPEWA	3	2	5
CHOCTAW	2	1	3
COLVILLE		2	2
COUER D'ALENE	1		1
CREEK	3		3
CROW CREEK SIOUX		1	1
ESKIMO		1	1
ESKIMO JAPANESE		1	1
FORT PECK		1	1
GILA RIVER	1		1
HAIDA		1	1
HIDATSA		1	1
JUANENO	1		1
KALAPUYA	1		1
LENNI-LANAPE	1		1
LUMBEE	1	1	2

TRIBAL AFFILIATION	FEMALE	MALE	TOTAL
MAIDU	1		1
MAKAH		1	1
MIAMI	1		1
MICMAC	1		1
MOHAWK		1	1
NAVAJO	3	1	4
NORTHERN CHEYENNE	1		1
OGLALA SIOUX	2		2
OSAGE	1		1
POWHATAN	1		1
PUYALLUP	1		1
PYRAMID LAKE		1	1
SAULT STE. MARIE CHI		2	2
SENECA	1		1
SIOUX	1		1
SISSETON-WAHPETAN		1	1
SOUTH AMERICAN INDIA		1	1
SWINOMISH		1	1
TURTLE MOUNTAIN	1		1
WHITE AMERIND	1	1	2
WHITE AMERIND-1 TRB	1		1
WHITE MOUNTAIN APACH	1		1
YAKIMA	1	4	5
YUROK	1		1
ZUNI	1		1
TOTAL	57	31	88

Professional Native American Enrollees as of the 10th Day of Autumn 2009 by Tribal Affiliation

TRIBAL AFFILIATION	FEMALE	MALE	TOTAL
AM IND - NO DOC	15	12	27
TOTAL	15	12	27

NATIVE AMERICAN ENTERING FRESHMAN COHORTS
PERIOD: 1999-2009
TOP 55 FEEDER HIGH SCHOOLS

HIGH SCHOOL	TOTAL
BOTHELL SENIOR H S	11
MARYSVLE-PILCHUCK HS	10
ROOSEVELT HS	9
WHITE SWAN H S	9
KENTRIDGE HS	8
MOUNTLAKE TERRACE HS	8
BLANCHET HIGH SCHOOL	7
GOV J R ROGERS H S	7
ISSAQUAH SR HS	7
KELSO HIGH SCHOOL	7
NEAH BAY HIGH SCHOOL	7
SKYLINE HS	7
WEST SEATTLE H S	7
EDMONDS WOODWAY HS	6
MEADOWDALE SR HS	6
OMAK SR HIGH SCH	6
REDMOND HIGH SCHOOL	6
SEATTLE PREP/MATEO RICCI	6
SHELTON HIGH SCHOOL	6
SOUTH WHIDBEY HS	6
TAHOLAH EDUCATION CTR	6
AUBURN RIVERSIDE HS	5
BENJAMIN FRANKLIN HS	5
CAPITAL HIGH SCHOOL	5
CEDARCREST HIGH SCHOOL	5
CURTIS SENIOR H S	5
DECATUR HIGH SCHOOL	5
HERITAGE HS	5

HIGH SCHOOL	TOTAL
INGLEMOOR SENIOR H S	5
JAMES A GARFIELD HS	5
LEWIS & CLARK HS	5
NEWPORT HIGH SCHOOL	5
NOOKSACK VALLEY H S	5
SHADLE PARK HIGH SCH	5
TOPPENISH SENIOR H S	5
BREMERTON HIGH SCH	4
CENTRAL KITSAP H S	4
CHIEF SEALTH HS	4
EASTLAKE HIGH SCHOOL	4
EMERALD RIDGE HS	4
ENUMCLAW HIGH SCHOOL	4
FIFE SENIOR H S	4
GONZAGA PREP SCHOOL	4
HENRY M JACKSON HS	4
KENTLAKE HS	4
LAKES HIGH SCHOOL	4
MARYSVILLE ARTS& TECHNOLOGY HS	4
NATHAN HALE SR HS	4
NORTH KITSAP HS	4
OLYMPIC HIGH SCHOOL	4
SEQUIM HIGH SCHOOL	4
SHOREWOOD HIGH SCH	4
SUMNER HIGH SCHOOL	4
W F WEST HIGH SCHOOL	4
WEATHERWAX HIGH SCHOOL	4

* Enrollees came from 285 high schools

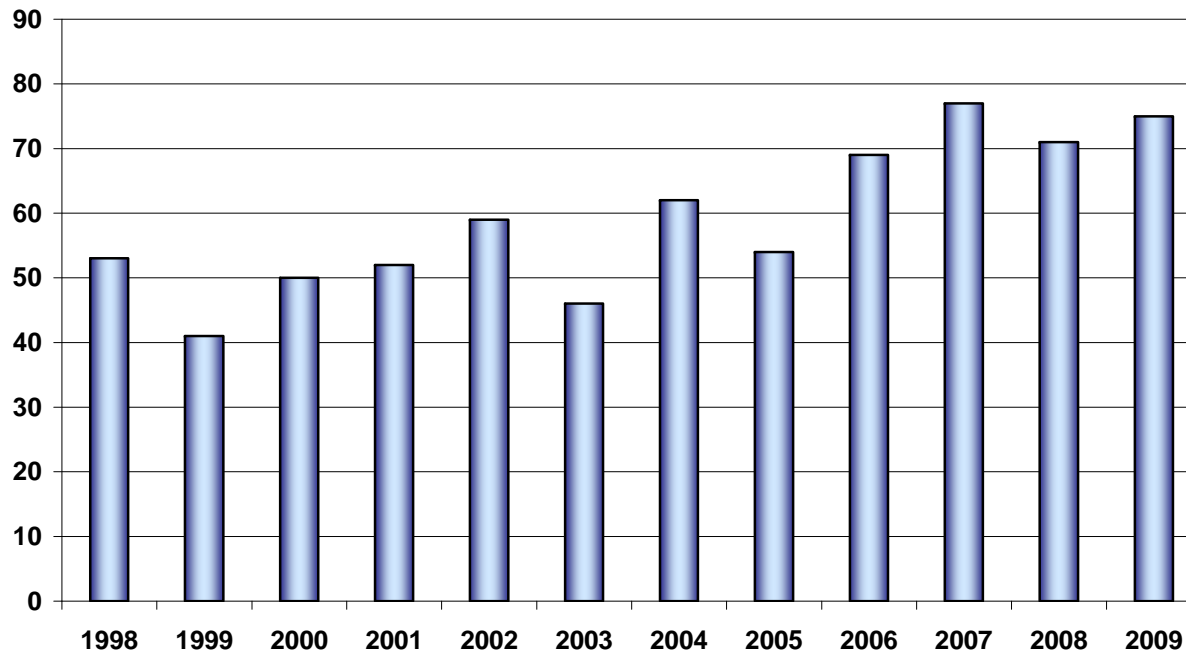
NATIVE AMERICAN ENTERING TRANSFER COHORTS
PERIOD: 1999-2009
TOP 29 2-YR & 4-YR FEEDER INSTITUTIONS

2-YR & 4-YR INSTITUTION	CITY	STATE	TOTAL
SHORELINE COMM COLL	SHORELINE	WA	26
SEATTLE CENTRAL CC	SEATTLE	WA	22
BELLEVUE COMM COLL	BELLEVUE	WA	21
NORTH SEATTLE CC	SEATTLE	WA	16
GREEN RIVER CC	AUBURN	WA	12
HIGHLINE COMM COLL	DES MOINES	WA	9
EDMONDS COMM COLL	LYNNWOOD	WA	8
PIERCE COLLEGE	TACOMA	WA	8
TACOMA COMM COLL	TACOMA	WA	8
EVERETT COMM COLL	EVERETT	WA	7
OLYMPIC COLLEGE	BREMERTON	WA	4
PENINSULA COLL	PT ANGELES	WA	4
WENATCHEE VALLEY COLL	WENATCHEE	WA	4
CASCADIA COMM COLL	BOTHELL	WA	3
SPOKANE COMM COLL	SPOKANE	WA	3
WASH STATE UNIV	PULLMAN	WA	3
YAKIMA VALLEY COMM COLL	YAKIMA	WA	3
BIG BEND CMTY COLL	MOSES LAKE	WA	2
CENTRAL WASHINGTON UNIV	ELLENSBURG	WA	2
EASTERN WASHINGTON UNIV	CHENEY	WA	2
HERITAGE COLLEGE	TOPPENISH	WA	2
NEW MEXICO		NM	2
SKAGIT VALLEY COLL	MT VERNON	WA	2
SOUTH PUGET SOUND CC	OLYMPIA	WA	2
SOUTH SEATTLE CC	SEATTLE	WA	2
SPOKANE FALLS COMM COLL	SPOKANE	WA	2
UNIV ALASKA ANCHORAGE	ANCHORAGE	AK	2
UNIV OF UTAH	SALT LAKE CITY	UT	2
WHATCOM COMM COLL	BELLINGHAM	WA	2

* Enrollees came from 54 2-yr & 4-yr Institutions

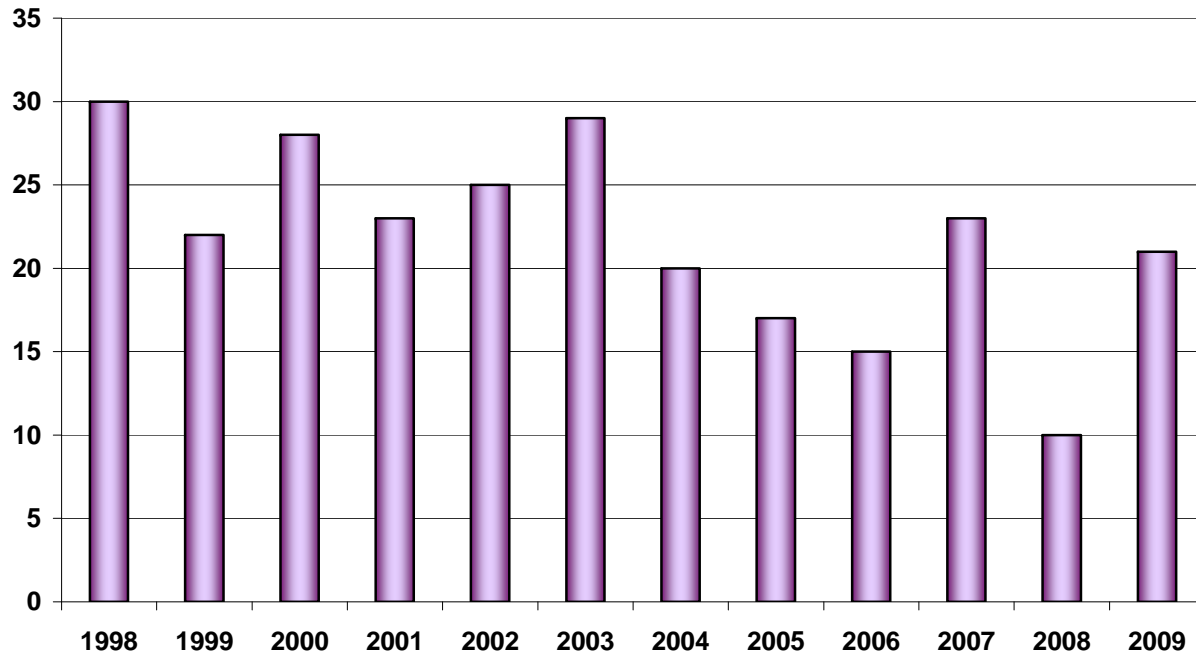
ENROLLMENT TRENDS NATIVE AMERICAN ENTERING FRESHMEN COHORTS (1998-2009)

Acad Year	Enrolled
1998	53
1999	41
2000	50
2001	52
2002	59
2003	46
2004	62
2005	54
2006	69
2007	77
2008	71
2009	75

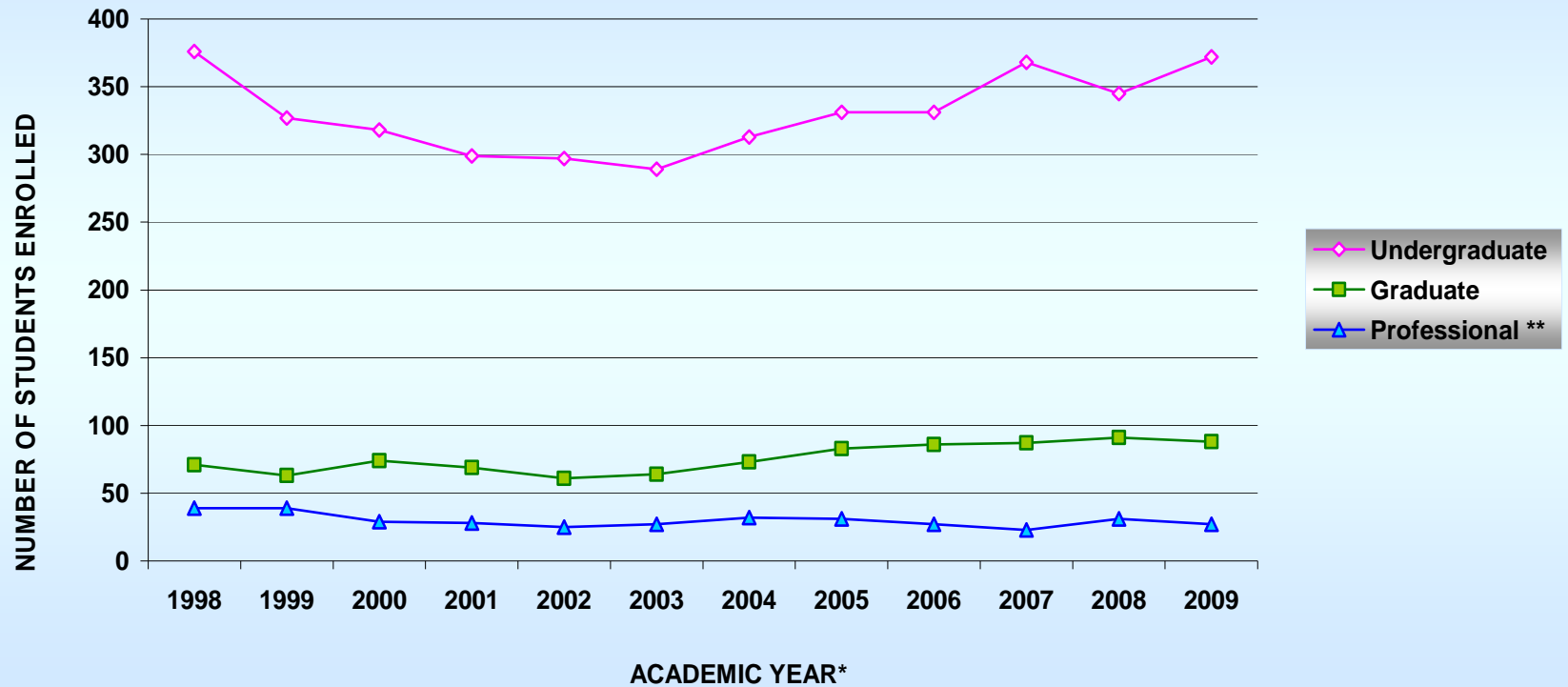


ENROLLMENT TRENDS NATIVE AMERICAN ENTERING TRANSFER COHORTS (1998-2009)

Acad Year	Enrolled
1998	30
1999	22
2000	28
2001	23
2002	25
2003	29
2004	20
2005	17
2006	15
2007	23
2008	10
2009	21



TOTAL NATIVE AMERICAN ENROLLMENT BY YEAR (1998-2009)



ACADEMIC YR	1998	1999	2000	2001	2002	2003	2004	2005	2006	2007	2008	2009
Undergraduate	376	327	318	299	297	289	313	331	331	368	345	372
Graduate	71	63	74	69	61	64	73	83	86	87	91	88
Professional **	39	39	29	28	25	27	32	31	27	23	31	27

* Academic Year = Autumn quarter of one year to Spring Qtr of the next year

** Professional = Dentistry, Law, Medicine, and Pharmacy

**6-YR GRADUATION RATES
1999-2003 ENTERING FRESHMAN COHORTS**

ETHNICITY	1999 Freshman Cohort			2000 Freshman Cohort			2001 Freshman Cohort			2002 Freshman Cohort			2003 Freshman Cohort		
	Cohort	Grad Data		Cohort	Grad Data		Cohort	Grad Data		Cohort	Grad Data		Cohort	Grad Data	
ASIAN	954	727	76.2%	1073	831	77.4%	1176	905	77.0%	1146	906	79.1%	1308	1075	82.2%
BLACK	83	43	51.8%	117	77	65.8%	120	82	68.3%	139	94	67.6%	143	107	74.8%
CAUCASIAN	2309	1720	74.5%	2639	1974	74.8%	2698	2041	75.6%	2615	2039	78.0%	2656	2146	80.8%
FILIPINO	127	87	68.5%	145	103	71.0%	168	126	75.0%	144	114	79.2%	161	131	81.4%
HAW/PAC	11	7	63.6%	23	16	69.6%	31	24	77.4%	23	17	73.9%	42	29	69.0%
LATINO	126	87	69.0%	119	82	68.9%	189	123	65.1%	171	114	66.7%	216	160	74.1%
INTERNATIONAL	55	46	83.6%	120	92	76.7%	157	122	77.7%	159	109	68.6%	125	105	84.0%
NATIVE AMERICAN	39	28	71.8%	48	26	54.2%	52	27	51.9%	58	33	56.9%	46	37	80.4%
NOT IND	621	463	74.6%	490	370	75.5%	703	538	76.5%	323	247	76.5%	255	203	79.6%
COHORT TOTAL	4325	3208	74.2%	4774	3571	74.8%	5294	3988	75.3%	4778	3673	76.9%	4952	3993	80.6%
ALL URM*	259	165	63.7%	307	201	65.5%	392	256	65.3%	391	258	66.0%	447	333	74.5%

*URM = Underrepresented Minorities (i.e., Black, Hawaiian/Pacific Islander, Latino & Native American)

Notes: 1 Native American student from the 1999 cohort – graduated after 6 year
 4 Native American students from the 2000 cohort – graduated after 6 year
 2 Native American students from the 2001 cohort – graduated after 6 year
 2 Native American students from the 2002 cohort – graduated after 6 year

**6-YR GRADUATION RATES
1999-2003 ENTERING TRANSFER COHORTS**

ETHNICITY	1999 Transfer Cohort			2000 Transfer Cohort			2001 Transfer Cohort			2002 Transfer Cohort			2003 Transfer Cohort		
	Cohort	Grad Data		Cohort	Grad Data		Cohort	Grad Data		Cohort	Grad Data		Cohort	Grad Data	
ASIAN	223	178	79.8%	186	153	82.3%	180	154	85.6%	200	178	89.0%	209	172	82.3%
BLACK	43	30	69.8%	41	26	63.4%	39	32	82.1%	41	29	70.7%	36	30	83.3%
CAUCASIAN	1060	858	80.9%	959	768	80.1%	909	758	83.4%	843	710	84.2%	747	643	86.1%
FILIPINO	25	24	96.0%	30	25	83.3%	29	21	72.4%	24	21	87.5%	33	29	87.9%
HAW/PAC	5	4	80.0%	4	3	75.0%	7	4	57.1%	6	5	83.3%	6	5	83.3%
LATINO	73	57	78.1%	69	62	89.9%	68	64	94.1%	59	55	93.2%	54	48	88.9%
INTERNATIONAL	117	107	91.5%	122	112	91.8%	125	115	92.0%	105	95	90.5%	118	111	94.1%
NATIVE AMERICAN	20	16	80.0%	24	17	70.8%	22	15	68.2%	26	17	65.4%	25	20	80.0%
NOT IND	269	213	79.2%	249	195	78.3%	255	212	83.1%	241	198	82.2%	169	143	84.6%
COHORT TOTAL	1835	1487	81.0%	1684	1361	80.8%	1634	1375	84.1%	1545	1308	84.7%	1397	1201	86.0%
ALL URM*	141	107	75.9%	138	108	78.3%	136	115	84.6%	132	106	80.3%	121	103	85.1%

*URM = Underrepresented Minorities (i.e., Black, Hawaiian/Pacific Islander, Latino & Native American)

Note: 1 Native American student each from the 1999 and 2000 cohorts graduated after 6 years

Degree Majors (Bachelors) Earned by Native American Students
Period: Autumn 2003 - Summer 2009

Degree Major	F	M	Total
Sociology	22	18	40
Political Science	23	13	36
Communication	22	6	28
English	17	10	27
Anthropology	12	7	19
Psychology	14	5	19
Business Admin (Marketing)	11	4	15
History	5	10	15
Biology (Cell and Molecular Biology)	7	7	14
Medxd (Medex Degree Program)	12	1	13
Art (Painting and Drawing)	8	3	11
General Studies	7	4	11
Nursing	11		11
Social Sciences, Evening Deg Program	8	2	10
American Indian Studies	7	2	9
Business Admin (Finance)	2	7	9
Comparative History of Ideas	7	1	8
Economics	4	4	8
International Studies	5	3	8
Mathematics	3	5	8
Philosophy	2	6	8
Biochemistry	2	5	7
Business Admin	4	3	7
Chemistry	5	2	7
Geography	4	3	7
American Ethnic Studies	6		6
Electrical Engineering		6	6
Accounting	2	3	5
Art History	4	1	5
Environmental St: Ecology & Cons	3	2	5
Mechanical Engineering		5	5
Social Welfare	4	1	5
Women Studies	5		5
Aeronautics & Astronautics		4	4
Communication, Evening Deg Program	4		4
Drama	3	1	4
Industrial Engineering		4	4
International Studies (Asia)	1	3	4
Aquatic and Fishery Sciences	2	1	3
Civil Engineering		3	3
Communications	2	1	3

Degree Major	F	M	Total
Comparative Literature	1	2	3
Env Science and Resource Mgmt	2	1	3
French	2	1	3
Law, Societies, and Justice	2	1	3
Linguistics	3		3
Neurobiology	2	1	3
Physics		3	3
Wildlife Science	1	2	3
Zoology	3		3
Business Admin (Entrepreneurship)	1	1	2
Business Admin (Inform Systems)	2		2
Chemical Engineering	1	1	2
Construction Management	1	1	2
Dance	2		2
Humanities, Evening Degree Program	2		2
Individualized Studies	1	1	2
Informatics		2	2
International Studies (Latin America)	1	1	2
Materials Science & Engineering		2	2
Microbiology	2		2
Norwegian	1	1	2
Oceanography	1	1	2
Scandinavian Area Studies	1	1	2
Speech and Hearing Sciences	1	1	2
Applied Music (Music Education)	1		1
Architectural Studies (w/ CM)	1		1
Astronomy		1	1
Bioengineering		1	1
Comparative Religion	1		1
Design & Planning (Arch Studies)		1	1
Digital Arts and Experimental Media		1	1
English, Evening Degree Program	1		1
Geological Sciences		1	1
German Language and Literature	1		1
Music	1		1
Near Eastern Studies: Lang & Civ	1		1
Russian Language, Lit, & Culture	1		1
Spanish	1		1
Sustainable Resource Sciences	1		1
Technical Communication		1	1
TOTAL	303	196	499

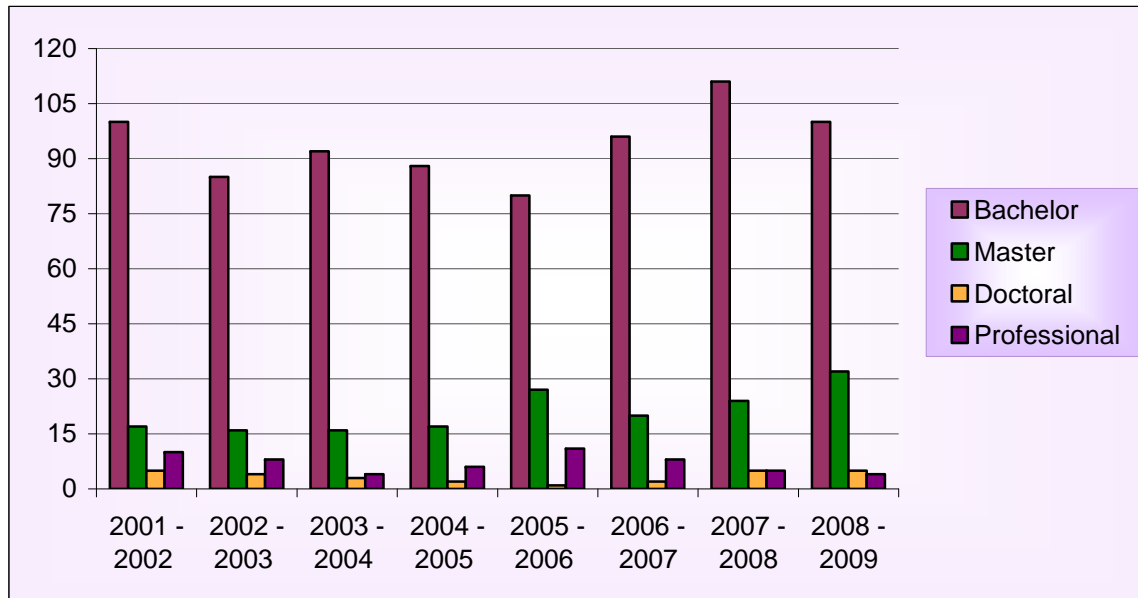
Native American Enrollees' Declared Majors
 Period: Winter 2010

Degree Major	F	M	Total
Pre Major (Arts & Sciences)	19	11	30
Pre Sciences	15	12	27
Pre Social Sciences	19	7	26
American Indian Studies	10	7	17
Pre Engineering	1	14	15
Pre Health Sciences	8	7	15
Biology (General)	8	5	13
Psychology	10	3	13
Pre Humanities	11	1	12
English	9	2	11
Anthropology	9		9
Biochemistry	2	7	9
Extended Pre Major	3	6	9
Political Science	7	2	9
Art (Ceramics)	6	2	8
Communication	5	3	8
Pre Nursing	8		8
Business Administration	1	6	7
Medex Oral Health Therapist Cert	6	1	7
Economics	2	4	6
Pre Business Admin	3	3	6
Sociology	5	1	6
Earth and Space Sciences		5	5
Environmental Studies	2	3	5
Law, Societies, and Justice	3	2	5
Mathematics	1	4	5
Pre Architecture & Urban Planning	2	3	5
Pre Arts	3	2	5
Comparative History of Ideas	3	1	4
Env Science and Resource Mgmt	1	3	4
Geography	1	3	4
History	3	1	4
App & Comp Math Sci	1	2	3
Business Admin (Marketing)	2	1	3
Medxd (Medex Degree Program)	2	1	3
Philosophy	2	1	3
Physics		3	3
Accounting		2	2
American Ethnic Studies	2		2
Bus Admin (Human Resources Mgmt)	1	1	2
Business Admin (Entrepreneurship)	1	1	2
Chemical Engineering	1	1	2
Chemistry		2	2
Civil Engineering		2	2

Degree Major	F	M	Total
Electrical Engineering		2	2
Extended Pre Business Admin	2		2
German Cultural Studies		2	2
International Studies: Europe	1	1	2
Music	1	1	2
Neurobiology	1	1	2
Nursing	2		2
Social Welfare	2		2
Speech and Hearing Sci	2		2
Visiting Arts & Sciences	1	1	2
Women Studies	2		2
Architectural Studies		1	1
Art History	1		1
Astronomy		1	1
Atmospheric Sciences		1	1
Bioengineering	1		1
Business Admin (Finance)	1		1
Certificate in International Business	1		1
Chinese		1	1
Classics	1		1
Comparative Religion	1		1
Computer Science		1	1
Construction Management		1	1
Dance	1		1
Drama	1		1
Early Childhood and Family Studies	1		1
Extended Pre Engineering		1	1
French	1		1
General Studies	1		1
Health Informatics & Health Info Mgmt	1		1
Humanities, Evening		1	1
Informatics		1	1
International Studies	1		1
International Studies (Latin America)	1		1
Italian	1		1
Mechanical Engineering		1	1
Medex (Medex Certificate Program)	1		1
Microbiology		1	1
Near Eastern Studies: Lang & Civ	1		1
Oceanography	1		1
Russian Lang, Lit, & Culture		1	1
Social Sciences, Evening	1		1
TOTAL	231	168	399

Native American Degree Attainment
Degrees Conferred by the University of Washington by Type
All Campuses
2001-2008

Academic Year	Bachelor	Master	Doctoral	Professional
2001 - 2002	100	17	5	10
2002 - 2003	85	16	4	8
2003 - 2004	92	16	3	4
2004 - 2005	88	17	2	6
2005 - 2006	80	27	1	11
2006 - 2007	96	20	2	8
2007 - 2008	111	24	5	5
2008 - 2009	100	32	5	4



2001-2009 NATIVE AMERICAN DIVERSITY SCHOLARS
TRIBAL AFFILIATION

TRIBAL AFFILIATION	F	M	TOTAL
ALASKA NATIVE	2	1	3
AM IND - NO DOC	1		1
AMERICAN INDIAN	1		1
ARAPAHO		1	1
BLACKFEET		1	1
BLACKFOOT SIOUX		1	1
CANADIAN INDIAN		1	1
CHEROKEE		1	1
CHICKASAW	1		1
CHOCTAW	1		1
COLVILLE	3	1	4
COWLITZ	2		2
CREEK		1	1
GRANDE RONDE	1		1
HAIDA	1		1
MAKAH	2		2
MENOMINEE	1		1
PEORIA		1	1
QUILEUTE		1	1
QUINAULT		1	1
SAMISH		1	1
SPOKANE	1		1
SQUAXIN ISLAND	1		1
SWINOMISH	1		1
TLINGIT	2	2	4
TULALIP	1		1
TURTLE MOUNTAIN		1	1
WHITE AMERIND-1 TRB	2		2
YAKIMA		1	1
TOTAL NATIVE AMERICAN	24	16	40

2001-2009 NATIVE AMERICAN MSI/DSI* SCHOLARSHIP RECIPIENTS
TRIBAL AFFILIATION

TRIBAL AFFILIATION	F	M	TOTAL
ALEUT	1		1
AM IND - NO DOC	4	2	6
COLVILLE	1		1
COWLITZ	1		1
HAIDA		1	1
TLINGIT		1	1
TSIMSHIAN	1		1
TOTAL NATIVE AMERICAN	8	4	12

MSI/DSI = Minority Scholars Invitational / Diversity Scholars Invitational

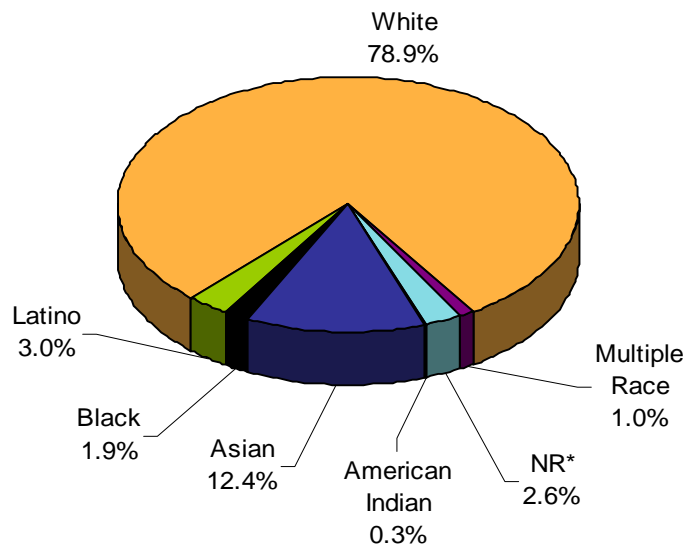
2004-2009 NATIVE AMERICAN EOP ENDOWED SCHOLARSHIP RECIPIENTS
TRIBAL AFFILIATION

TRIBAL AFFILIATION	F	M	TOTAL
ALASKA ATHABASKAN	1		1
ALEUT	2		2
AM IND - NO DOC	6	2	8
AMERICAN INDIAN	1		1
CHUGACH	1		1
COLVILLE	2		2
COWLITZ	1		1
GRANDE RONDE	1		1
HAIDA		1	1
MAKAH	1		1
MUCKLESHOOT	1		1
PEORIA		1	1
PONCA		1	1
SENECA NATION	1		1
TLINGIT	2		2
TULALIP	1		1
YAKIMA	1		1
YUROK	1		1
TOTAL NATIVE AMERICAN	23	5	28

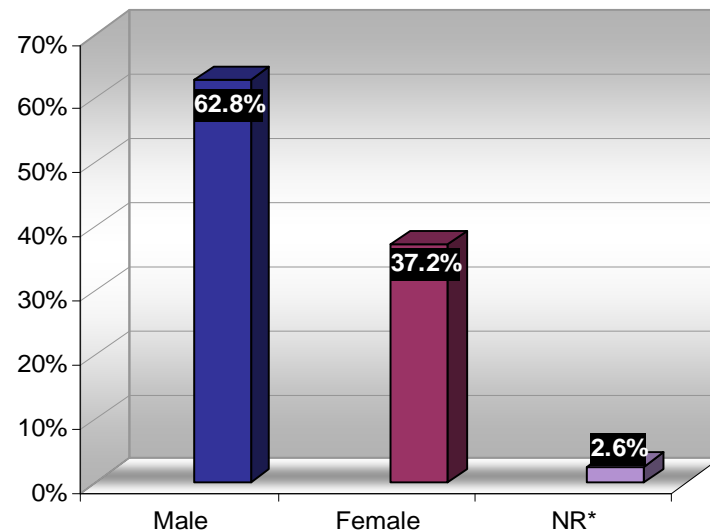
FACULTY (ALL UW CAMPUSES)
Professorial and Instructional
(N=4,169)

Faculty Statistics by Rank	Total	Male	Female	American Indian	Asian	Black	Latino	White	Multiple Race	NR*
Professorial Faculty	3,842	2,480	1,362	10	485	73	116	3,021	38	99
Professor	1,739	1,296	443	1	129	25	30	1,528	7	19
Associate Professor	1,137	674	463	5	144	19	45	882	17	25
Assistant Professor	966	510	456	4	212	29	41	611	14	55
Instructional Faculty	327	139	188	1	32	5	9	267	5	8
Principal Lecturer	10	2	8	0	1	0	0	9	0	0
Senior Lecturer	181	76	105	0	13	2	3	160	2	1
Lecturer	136	61	75	1	18	3	6	98	3	7
Sub Total Faculty	4,169	2,619	1,550	11	517	78	125	3,288	43	107

ETHNIC DISTRIBUTION



GENDER DISTRIBUTION

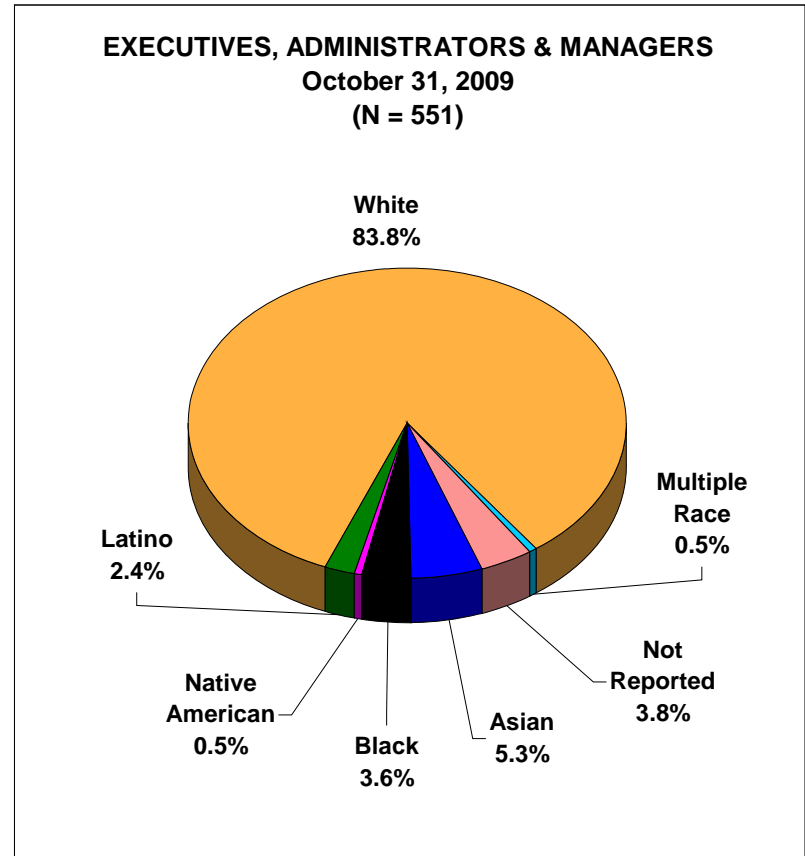
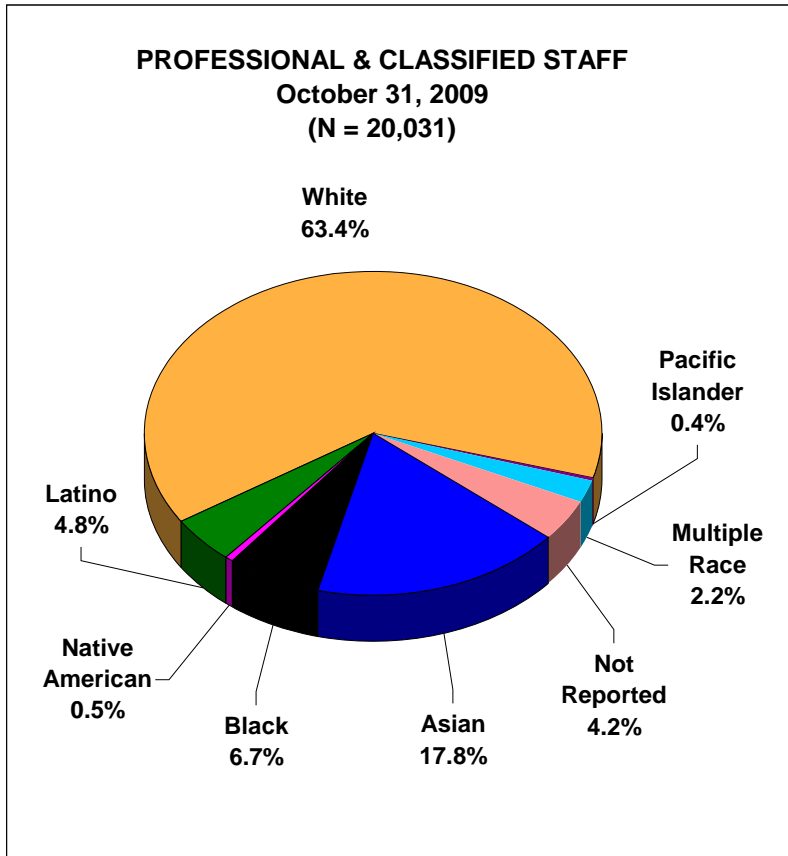


Source: UW Vice Provost for Academic Personnel website (10/31/2009)

Notes: NR* = Not Reported

It should be noted that the numbers reported for 2009 may be markedly different than those reported for 2008 due, in part, to the inclusion of a new category, Multiple Race, and more survey respondents choosing not to report race/ethnicity.

UW STAFF WORKFORCE PROFILE (ALL UW CAMPUSES)



NOTE: It should be noted that the numbers reported for 2009 may be markedly different than those reported for 2008 due, in part, to the inclusion of a new category, Multiple Race, and more survey respondents choosing not to report race/ethnicity.